



FUTURE OF UK  
**Treescapes**





# Update to TDAG

22 November 2022

Julie Urquhart & Clive Potter

Programme Ambassadors



COUNTRYSIDE  
AND COMMUNITY  
RESEARCH INSTITUTE



UNIVERSITY OF  
GLOUCESTERSHIRE

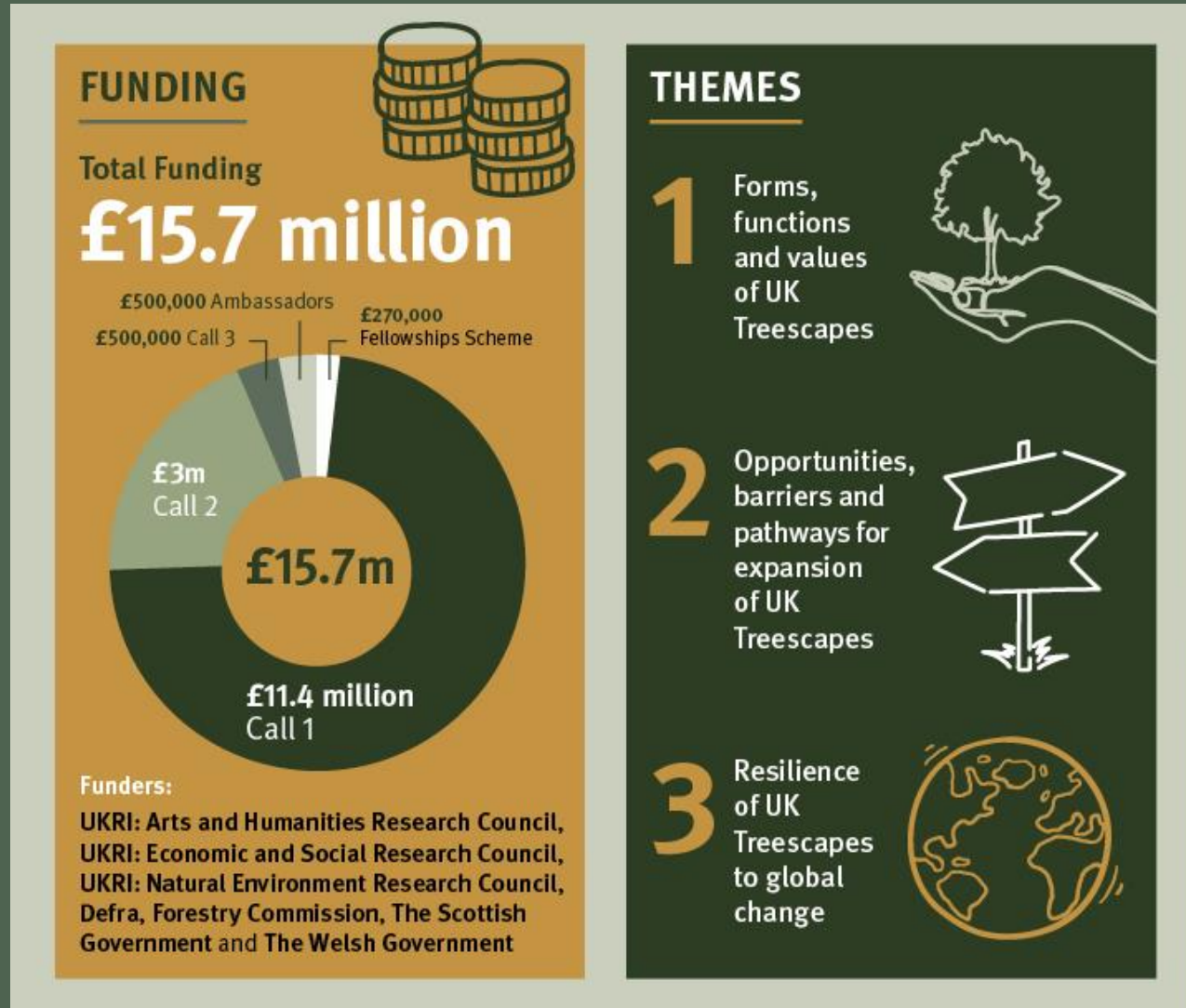
Imperial College  
London





# The Future of UK Treescapes story

Improving treescapes for the benefit of environment and society



# Future Treescapes Building Blocks

## PROJECTS

**CALL 1** 6 large research projects

**CALL 2** 6 gap-filling research projects

**CALL 3** Several knowledge exchange projects (yet to be funded)



**7** FELLOWSHIPS

up to  
**£50,000**  
funding

**12 months**



## PROGRAMME ADVISORY BOARD

**13**  
stakeholders



who advise us on the industry, policy and societal applications and impact of the programme including **Scottish Forestry**, **Natural Resources Wales**, **National Trust** and **Confor**.

### Call 1 Projects

Voices of the Future  
Connected Treescapes  
newLeaf  
MEMBRA  
Branching Out  
CASTOR

### Call 2 Projects

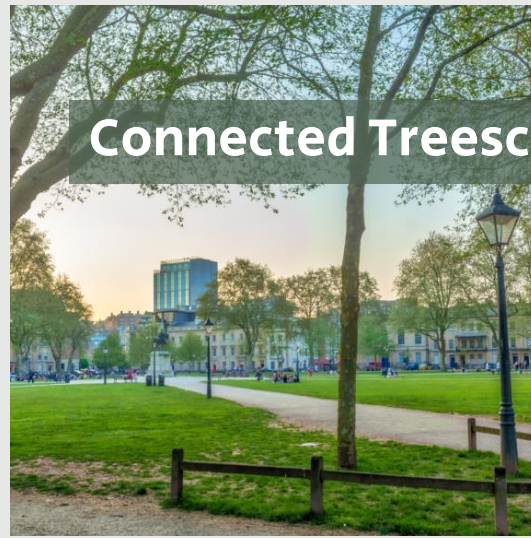
TreE\_PlaNat  
iDeer  
STAND  
FARM TREE  
Agroforestry Futures  
DiversiTree







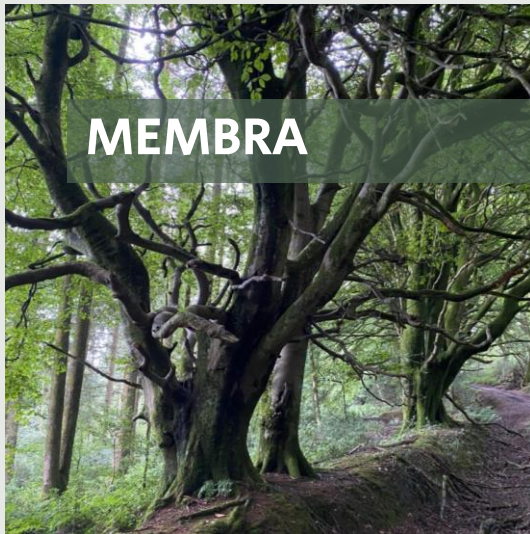
**Voices of the Future**



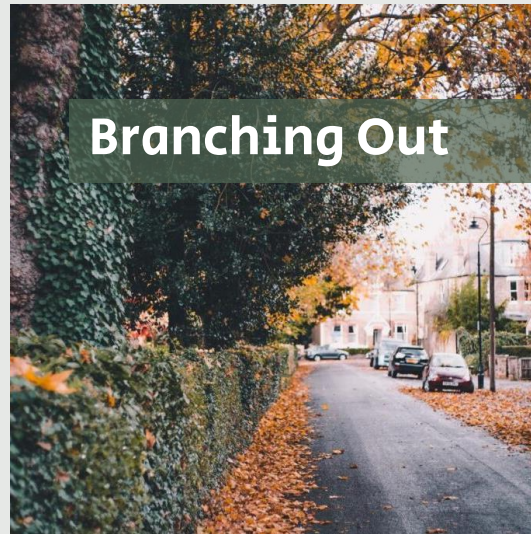
**Connected Treescapes**



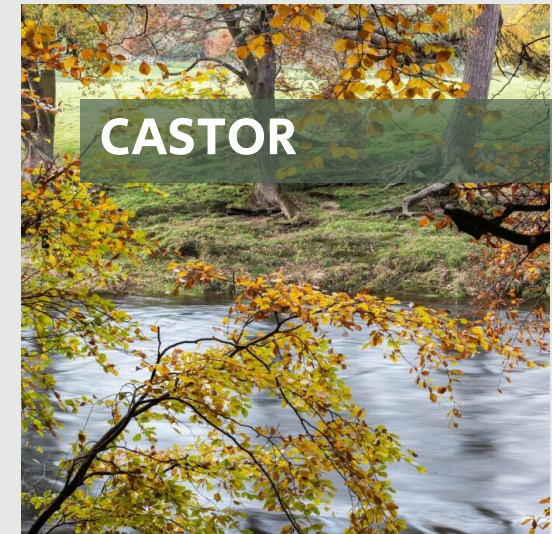
**newLEAF**



**MEMBRA**



**Branching Out**



**CASTOR**

**Call 1 Projects**

[uktreescapes.org/projects](http://uktreescapes.org/projects)







## Voices of the Future

Our woods, forests and trees belong to our children. Voices of the Future will work with young people to reimagine our treescapes.

Manchester Metropolitan U, U of Aberdeen, U of Birmingham, U of Cambridge, U of Cumbria, Middlesex U London, U of Sheffield, Natural England



## Connected Treescapes

Trees connect us to nature, improve our wellbeing and help tackle climate change. These connections are a key theme in Connected Treescapes.

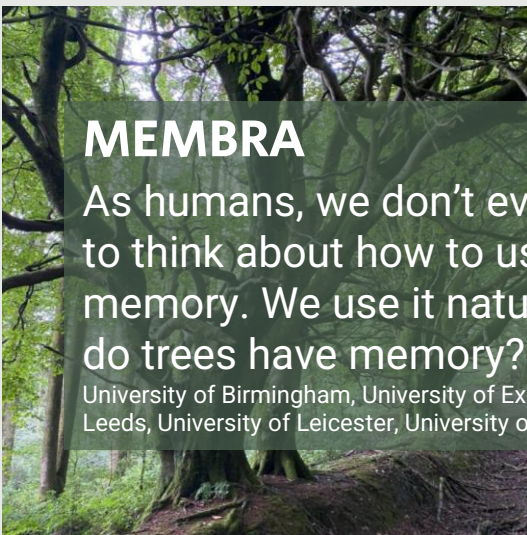
U of York, U of Strathclyde, CEH, Newcastle U, U of Derby, U of Edinburgh, FR, James Hutton Institute



## newLEAF

How quickly can trees adapt to change on their own? And is human intervention needed?

CEH, FR, James Hutton Institute, University of York, University of Strathclyde, University of Stirling, University of Glasgow, Robert Gordon University



## MEMBRA

As humans, we don't even have to think about how to use memory. We use it naturally, but do trees have memory?

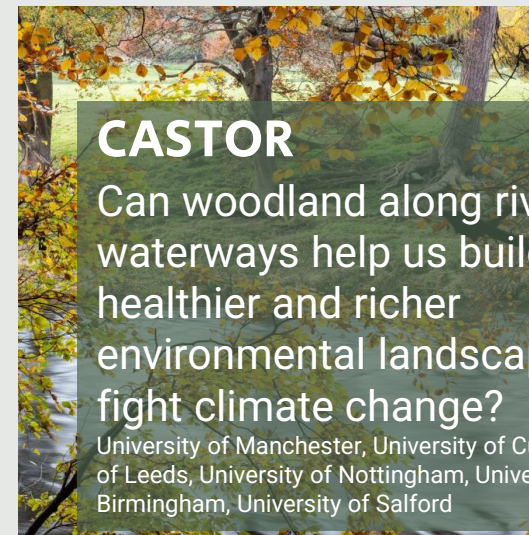
University of Birmingham, University of Exeter, University of Leeds, University of Leicester, University of Bangor.



## Branching Out

Branching Out looks at the social and cultural values of trees and new ways to map trees with these in mind.

Loughborough University, FR, Open University, University of York, EcoLogos



## CASTOR

Can woodland along rivers and waterways help us build a healthier and richer environmental landscape and fight climate change?

University of Manchester, University of Cumbria, University of Leeds, University of Nottingham, University of Birmingham, University of Salford

# Call 1 Projects

[uktreescapes.org/projects](http://uktreescapes.org/projects)



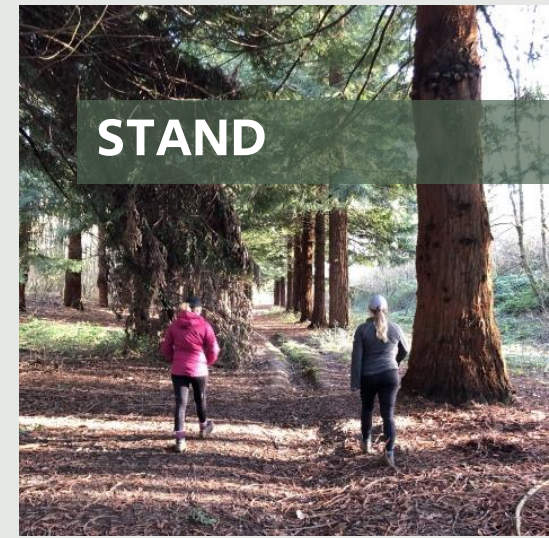




TreE\_PlaNat



iDeer



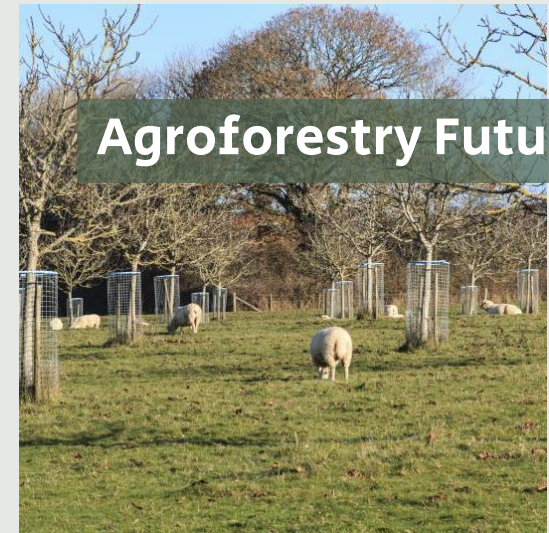
STAND



DiversiTree



FARM TREE



Agroforestry Futures

**Call 2 Projects**

[uktreescapes.org/projects](http://uktreescapes.org/projects)



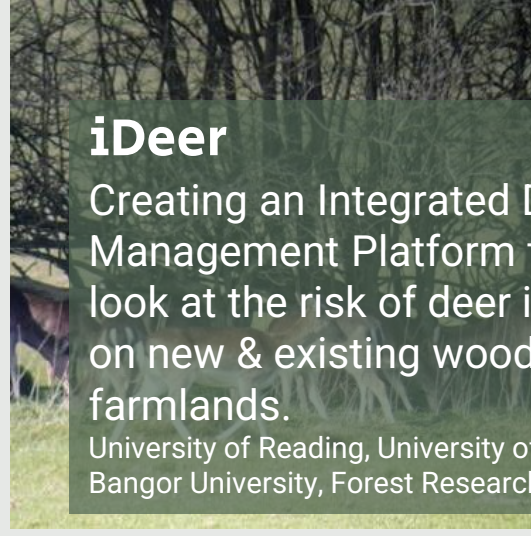




## TreE\_Planat

Assessing stakeholder perceptions and socio-ecological consequences of woodland expansion through planting & natural colonisation.

University of Stirling, University of Edinburgh, Royal Holloway UoL, Forest Research



## iDeer

Creating an Integrated Deer Management Platform that will look at the risk of deer impacts on new & existing woodlands and farmlands.

University of Reading, University of Southampton, Bangor University, Forest Research



## STAND

Overcoming scale-mismatch for designing & governing treescape expansion to benefit people & nature.

RSPB, Cardiff University, University of the Highlands & Islands



## DiversiTree

Diversifying our woodlands with native & non-native species to increase resilience to climate change, pests and diseases.

James Hutton Institute, Royal Botanic Garden Edinburgh, RSPB, University of Birmingham



## FARM TREE

Balancing farm and landscape-scale demands for integrating trees on agricultural land.

University of Aberdeen, James Hutton Institute



## Agroforestry Futures

Identifying opportunities & barriers to agroforestry in the UK & co-creating pathways to achieve a sustainable transition to increased agroforestry.

Newcastle University, University of Reading, University of Southampton

# Call 2 Projects

[uktreescapes.org/projects](http://uktreescapes.org/projects)





## NERC-funded

- Restoring Floodplain Treescapes for Flood Alleviation
- **Developing good practice guidance for tree planting for urban cooling**
- **Treescape Regulation of Urban Environments (TRUE)**
- **AFFORE3ST: Advancing a planning Framework FOr Regionally Enhanced & Equitable Ecosystem Services from urban Treescapes**
- Knowledge exchange with Norway to improve monitoring & management of mountain woodland restoration

## Defra-funded

- Exploring wood pastures for upland UK treescapes
- Landscape restoration of wych elm through genetic & natural breeding techniques
- Securing seed supply for forest expansion – knowledge exchange with Austria
- Addressing barriers to silvoarable & co-developing recommendations for policy

## Our Fellows





# Gaps in Programme Portfolio

- Lack of focus on commercial tree species & timber production
- Economic & financial aspects of expansion, including the potential for new or expanded wood-based industries & tree nurseries
- Supply of resilient & biosecure planting stock
- Hedgerows/TOW – risks, benefits, future management for resilience
- Ecological, social, economic & cultural impacts of tree pests & diseases





# Any questions?

Contact us at:

[Treescapes@glos.ac.uk](mailto:Treescapes@glos.ac.uk)

[Uktreescapes.org](http://Uktreescapes.org)

Twitter: @UK\_Treescapes