



Clyde Climate Forest

Chris Stark

Head of Forestry & Land Services, Green Action Trust

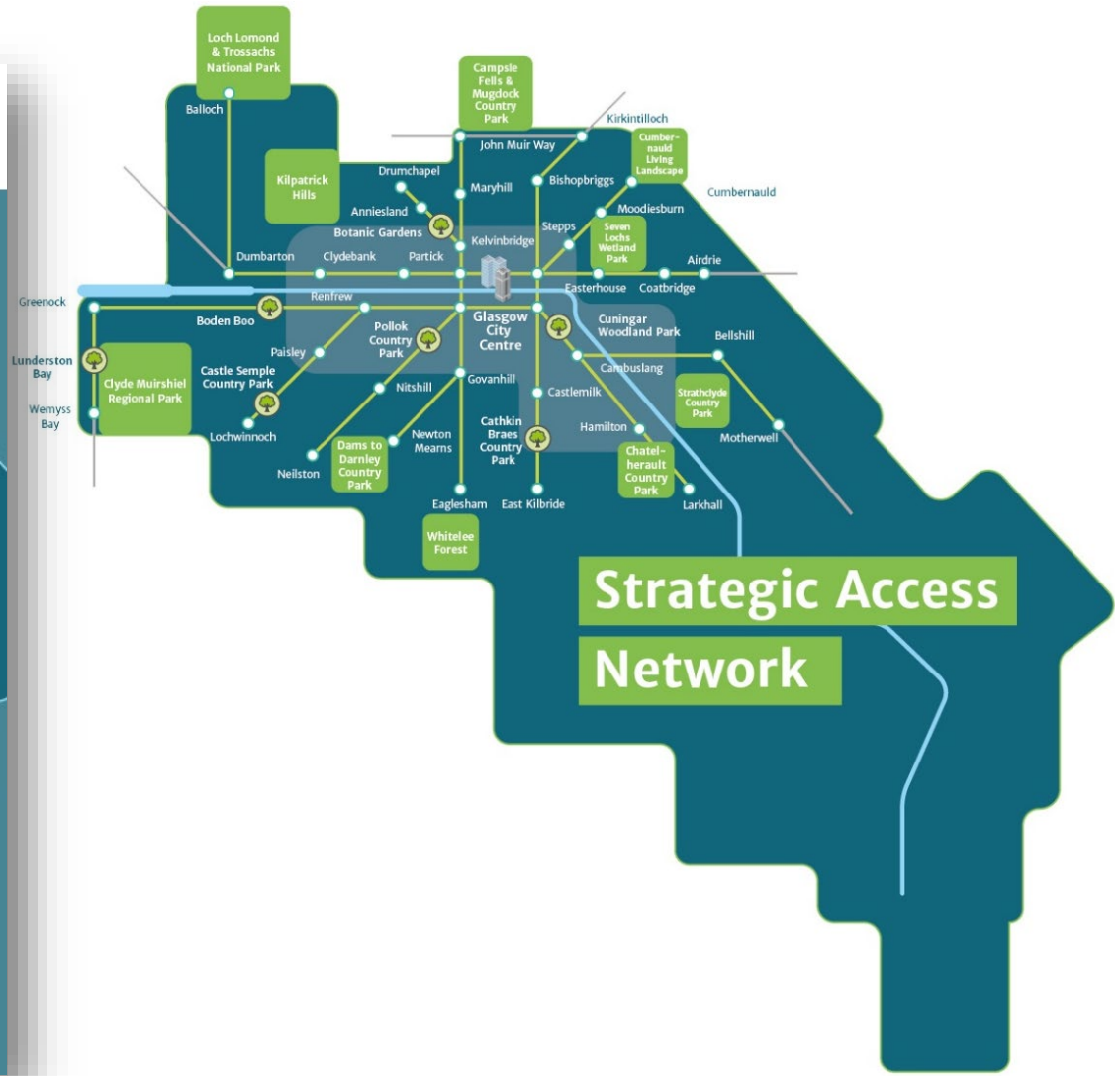
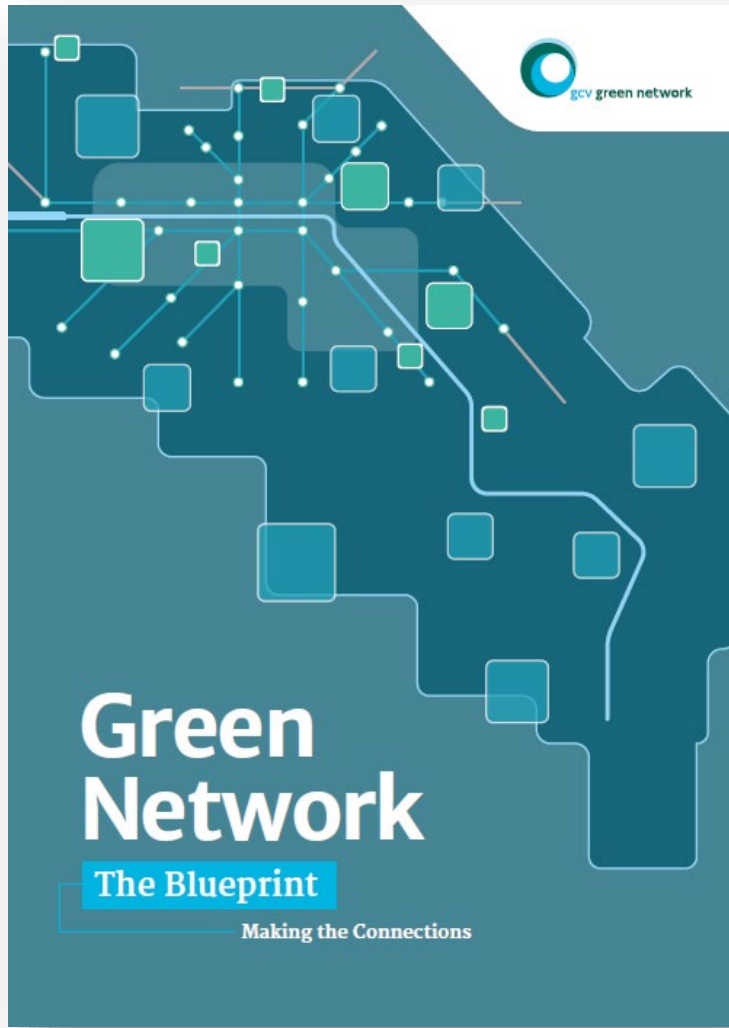
Director, Clyde Climate Forest

Trees and Design Action Group

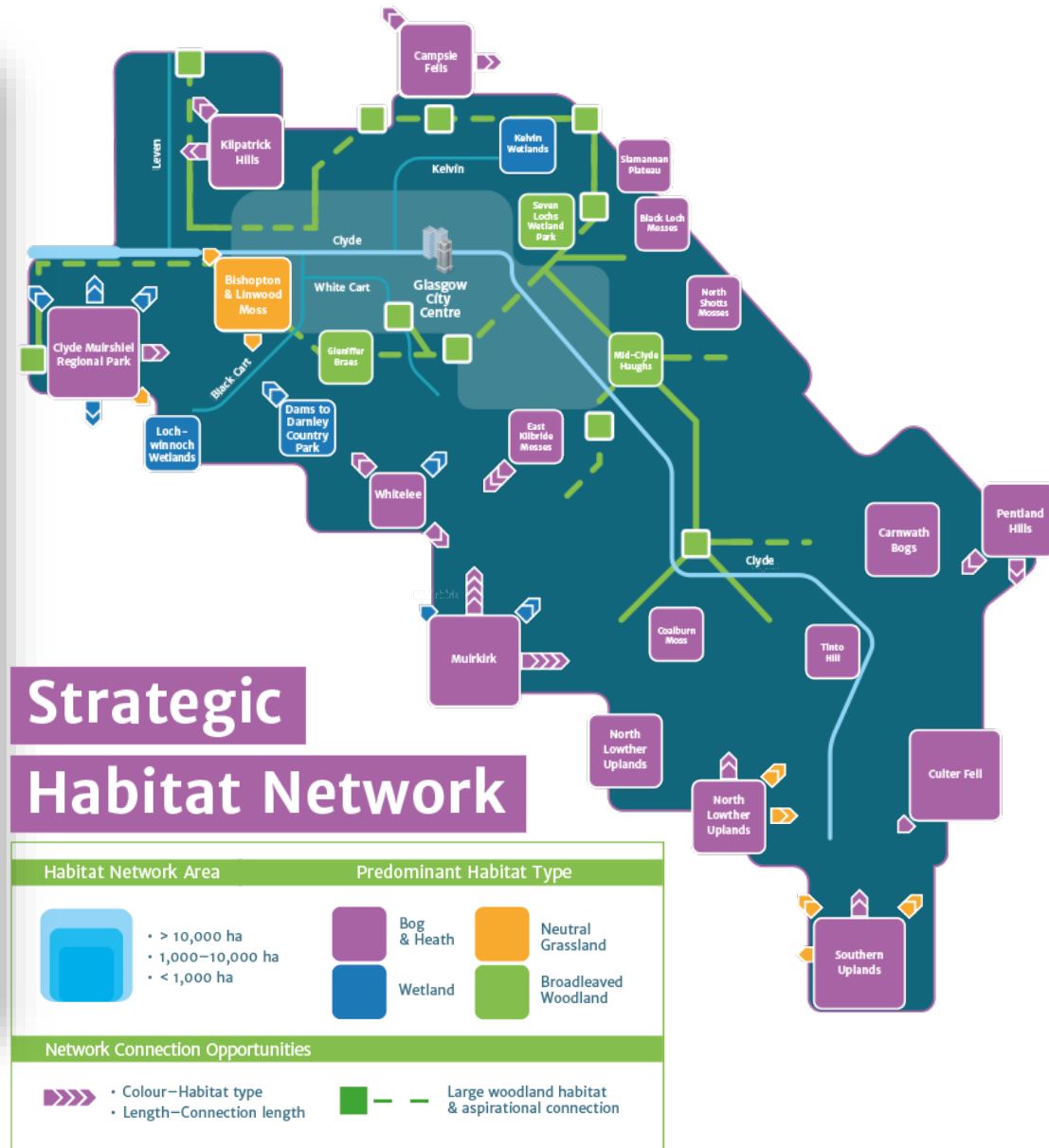
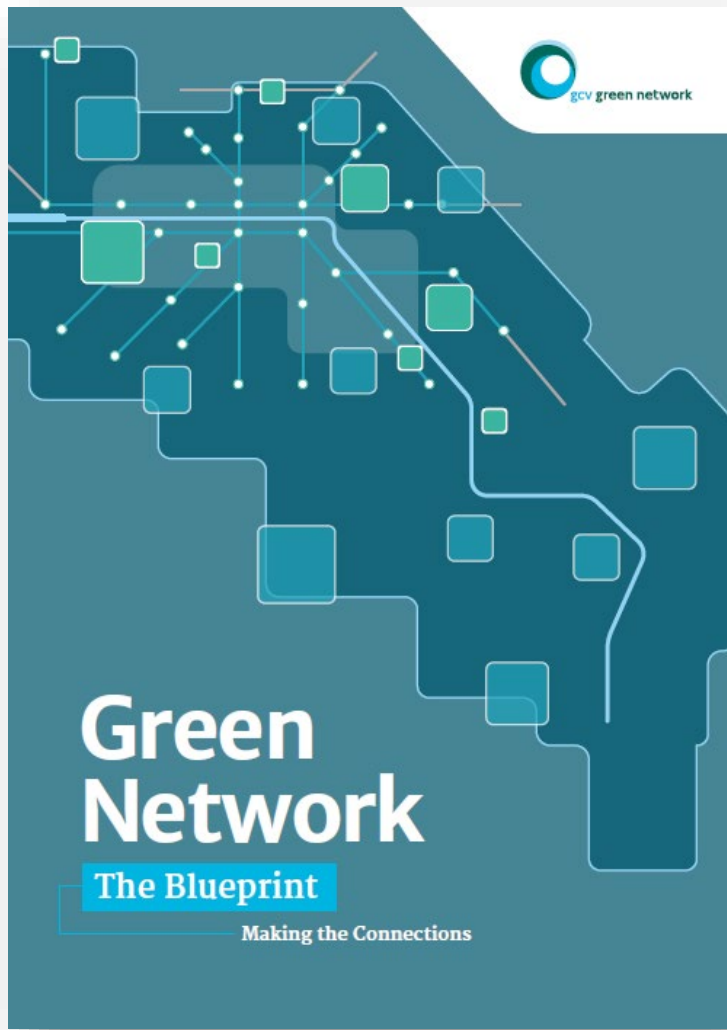
Time for optimism: tree stories from around the UK

16th January 2024

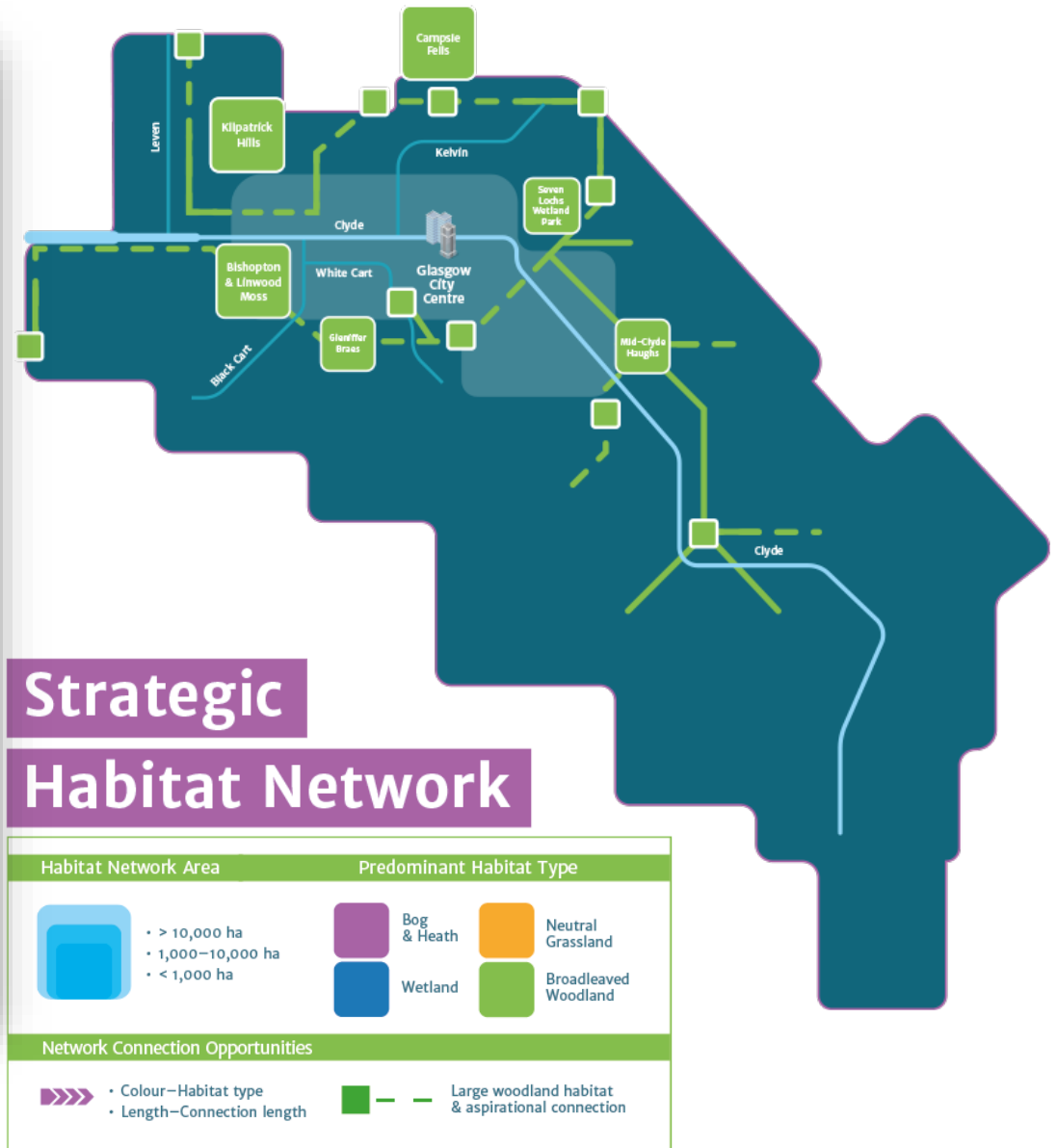
The Blueprint for the Green Network



The Blueprint for the Green Network



The Blueprint for the Green Network



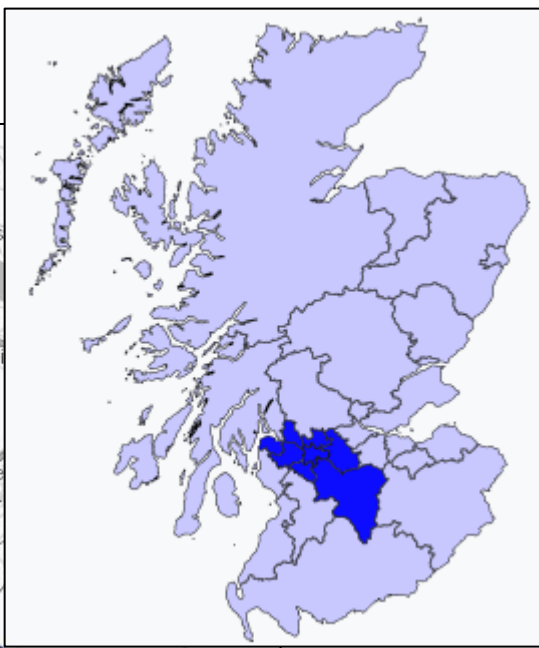
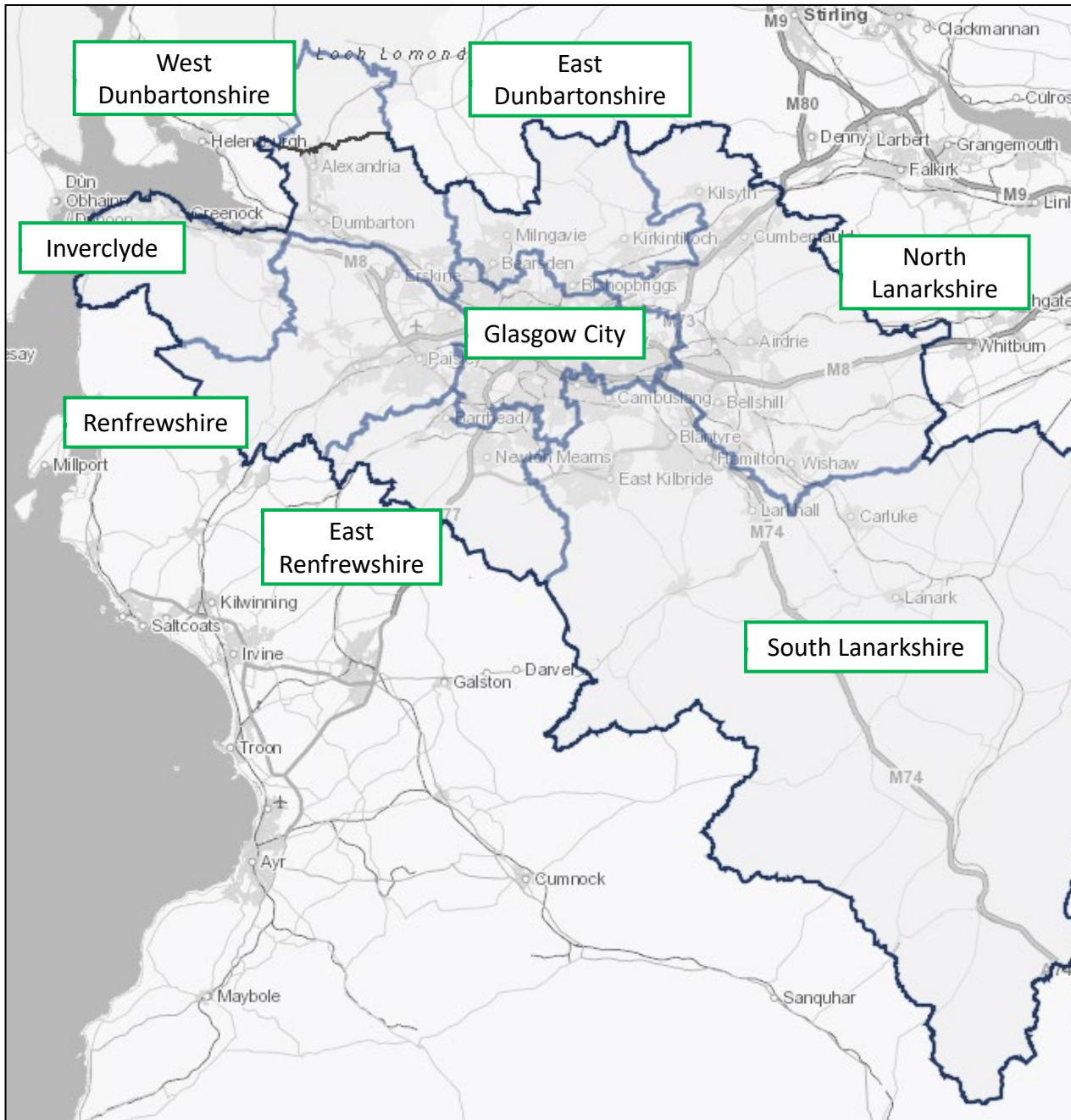


The Clyde Climate Forest is
being delivered with the help of:



Scottish
Forestry
Coilltearachd
na h-Alba







Clyde Climate Forest

18 million trees over the next decade



The right trees in the right places!



Clyde Climate Forest

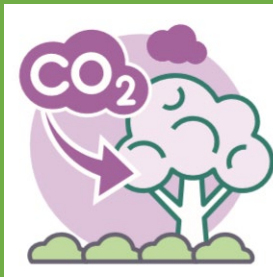
CANOPY . CONNECTIVITY . CARBON



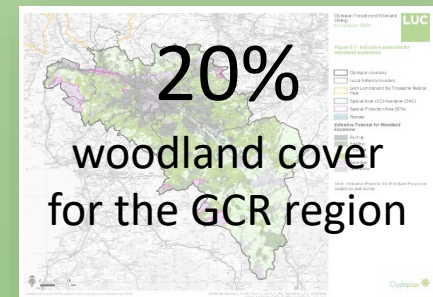
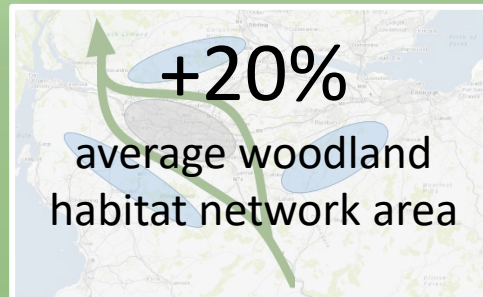
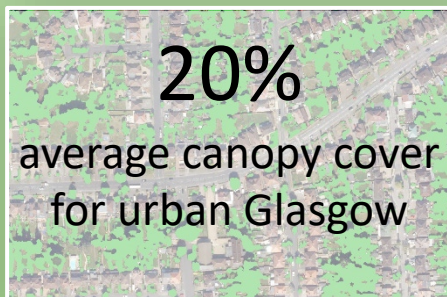
Canopy



Connectivity



Carbon

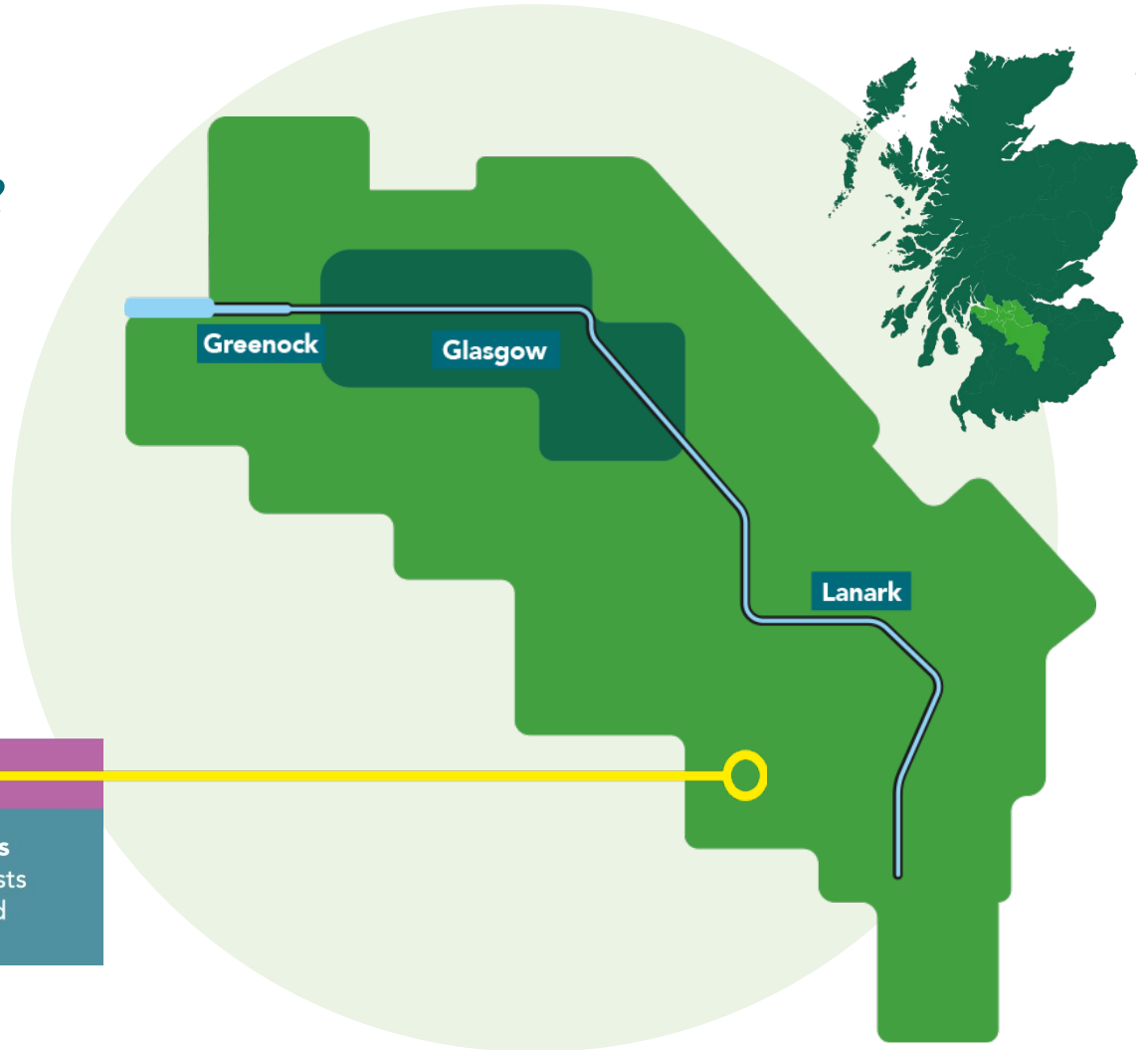




Clyde Climate Forest

CANOPY . CONNECTIVITY . CARBON

Where will the CCF be?



Carbon

Up to **1,000 hectares** per year of new forests & woodlands planted across the region.

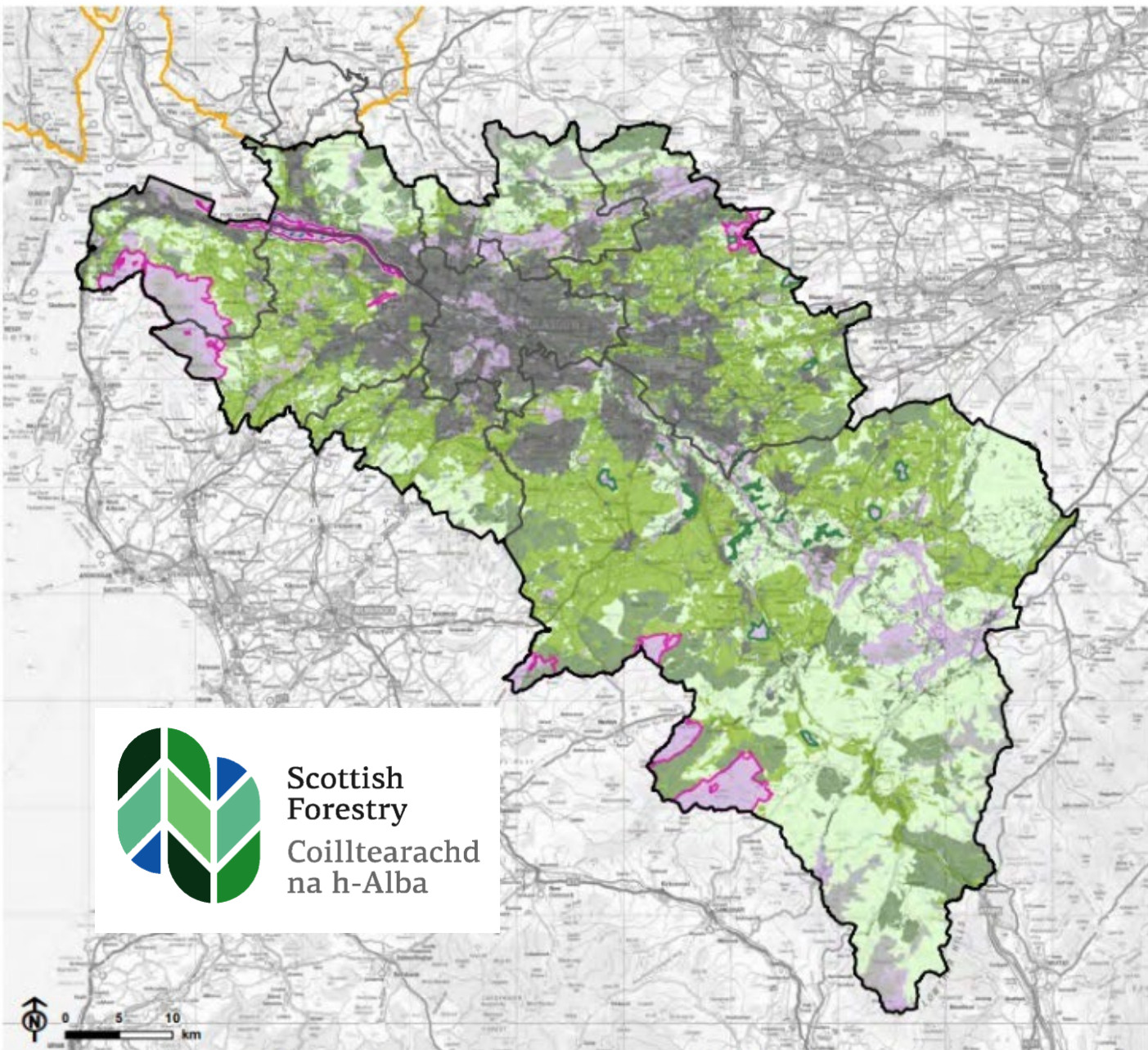
Figure 5.1: Indicative potential for woodland expansion

- Clydeplan boundary
- Local Authority boundary
- Loch Lomond and the Trossachs National Park
- Special Area of Conservation (SAC)
- Special Protection Area (SPA)
- Ramsar

Indicative Potential for Woodland Expansion

- Built up
- Existing
- Potential
- Preferred
- Sensitive
- Unsuitable

Note: Indicative Potential for Woodland Expansion subject to peat survey



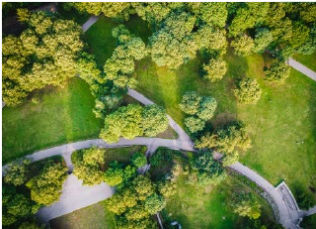
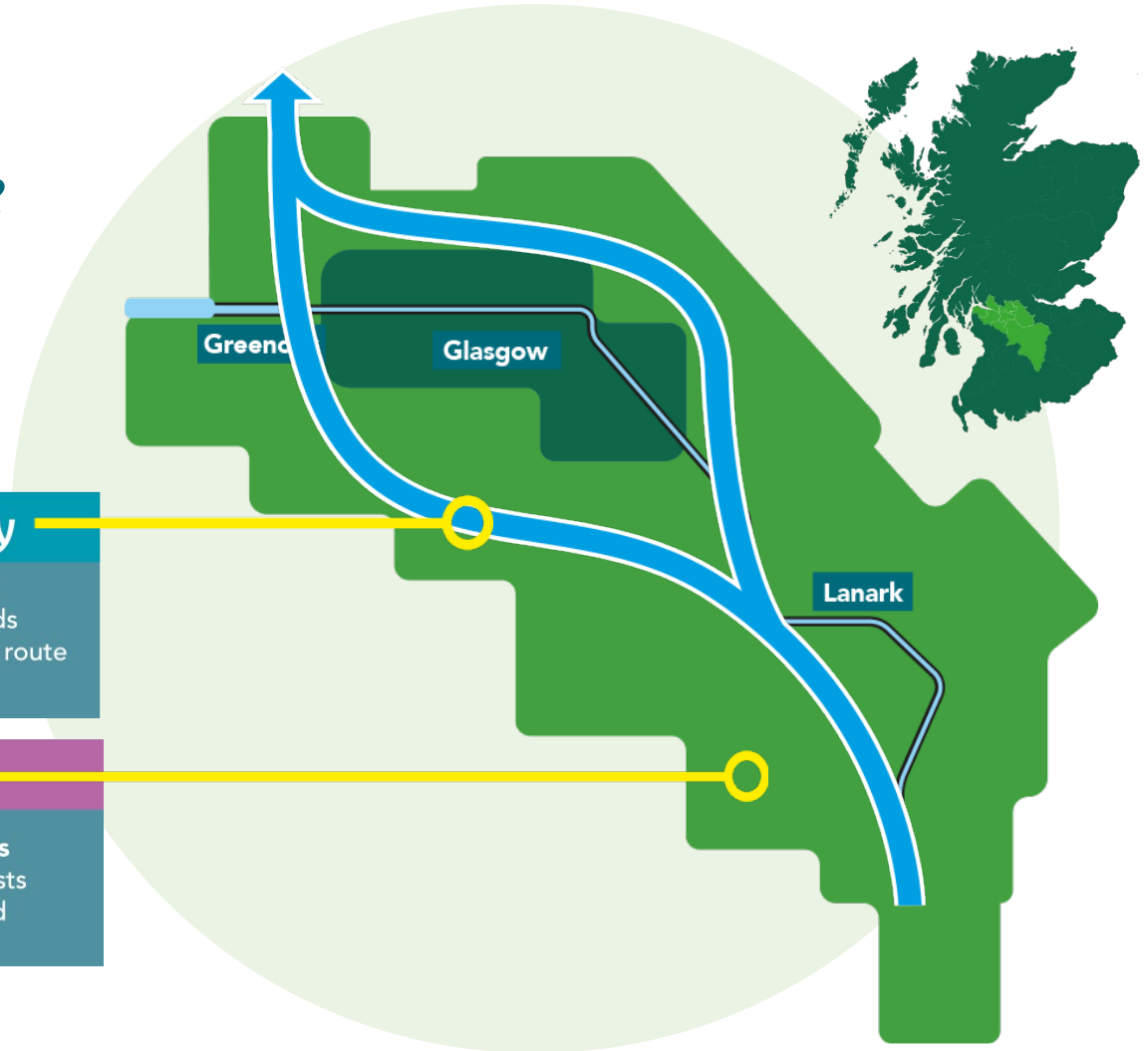
Scottish
Forestry
Coilltearachd
na h-Alba



Clyde Climate Forest

CANOPY . CONNECTIVITY . CARBON

Where will the CCF be?



Connectivity

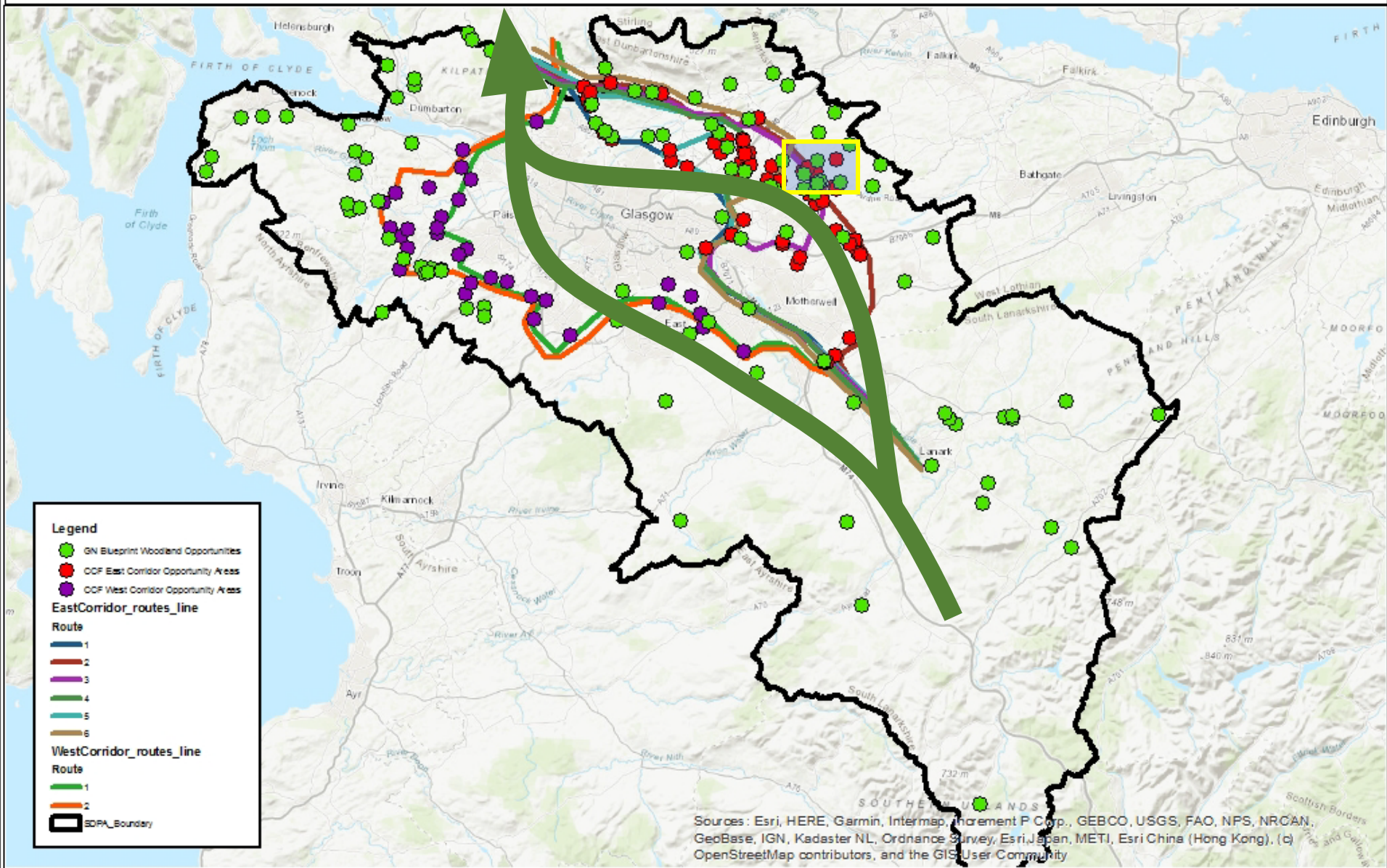
Targeted planting of **230** native woodlands creating a migratory route for wildlife.



Carbon

Up to **1,000 hectares** per year of new forests & woodlands planted across the region.

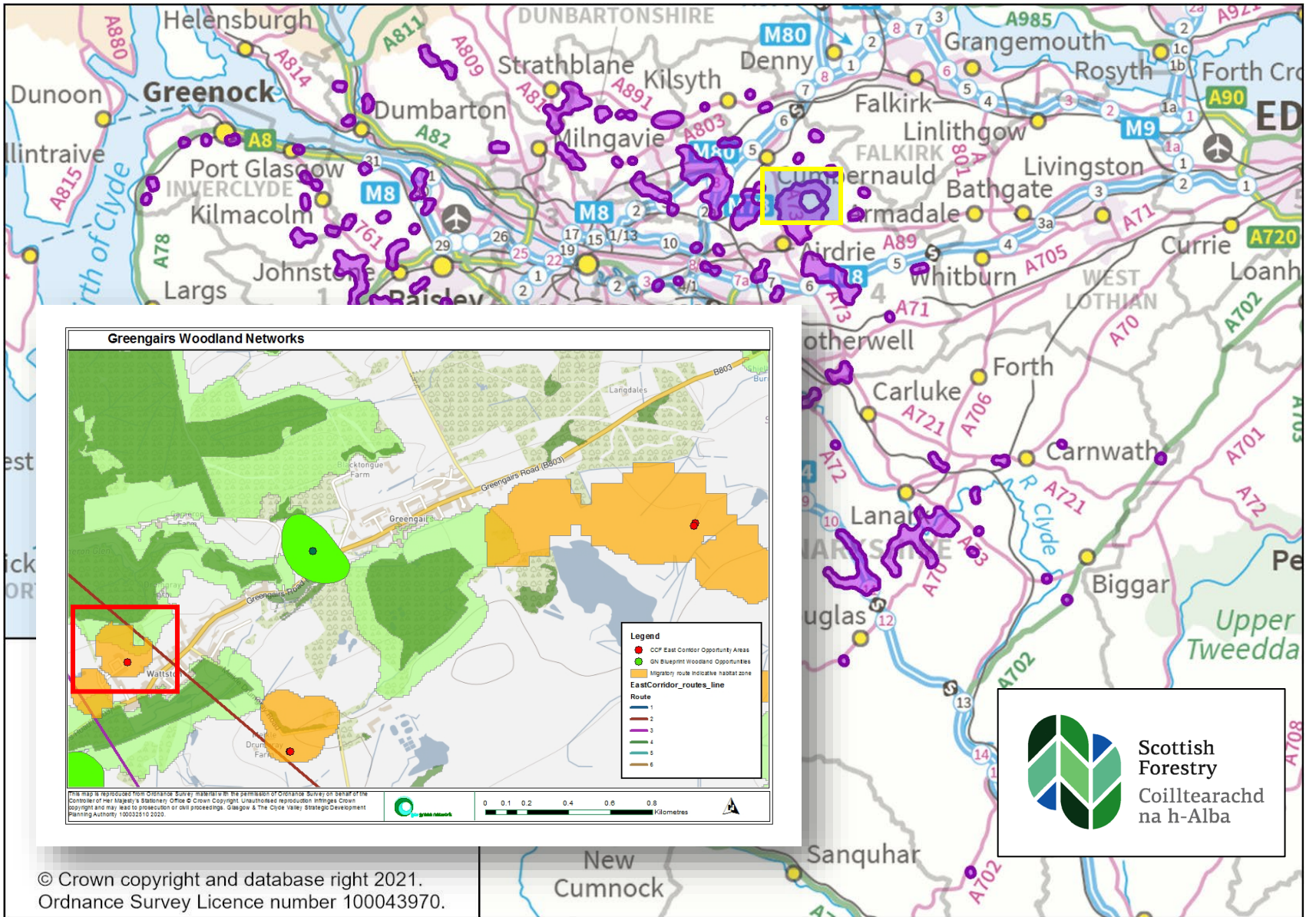
GN Blueprint & CCF - Woodland Connectivity Opportunities & Route Options



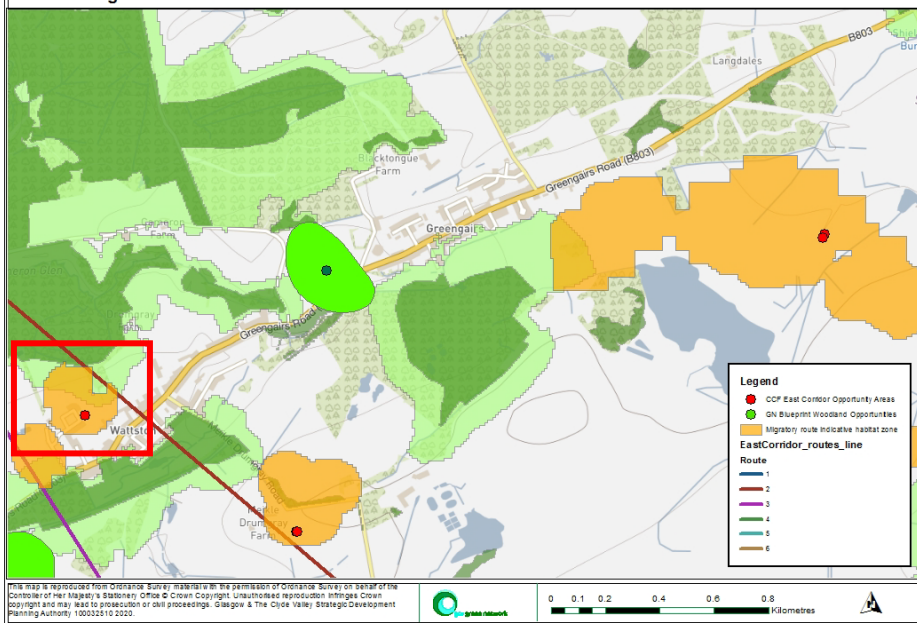
Sources: Esri, HERE, Garmin, Intermap, InCREMENT P Corp., GEBCO, USGS, FAO, NPS, NRCAN, GeoBase, IGN, Kadaster NL, Ordnance Survey, Esri Japan, METI, Esri China (Hong Kong), (c) OpenStreetMap contributors, and the GIS User Community

This map is reproduced from Ordnance Survey material with the permission of Ordnance Survey on behalf of the Controller of Her Majesty's Stationery Office © Crown Copyright. Unauthorised reproduction infringes Crown copyright and may lead to prosecution or civil proceedings. Glasgow & The Clyde Valley Strategic Development Planning Authority 100032510 2021





Greengairs Woodland Networks



This map is reproduced from Ordnance Survey materials with the permission of Ordnance Survey on behalf of the Controller of Her Majesty's Stationery Office. Crown Copyright. Unauthorised reproduction infringes Crown Copyright and may lead to prosecution or civil proceedings. Glasgow & The Clyde Valley Strategic Development Planning Authority 100032510 2020.



© Crown copyright and database right 2021.
Ordnance Survey Licence number 100043970.



Clyde Climate Forest

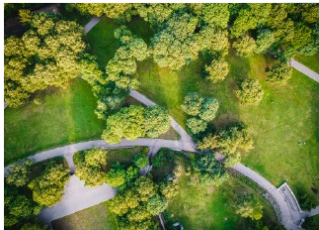
CANOPY . CONNECTIVITY . CARBON

Where will the CCF be?



Canopy

Up to **1.5 million** new trees planted with local communities in urban areas.



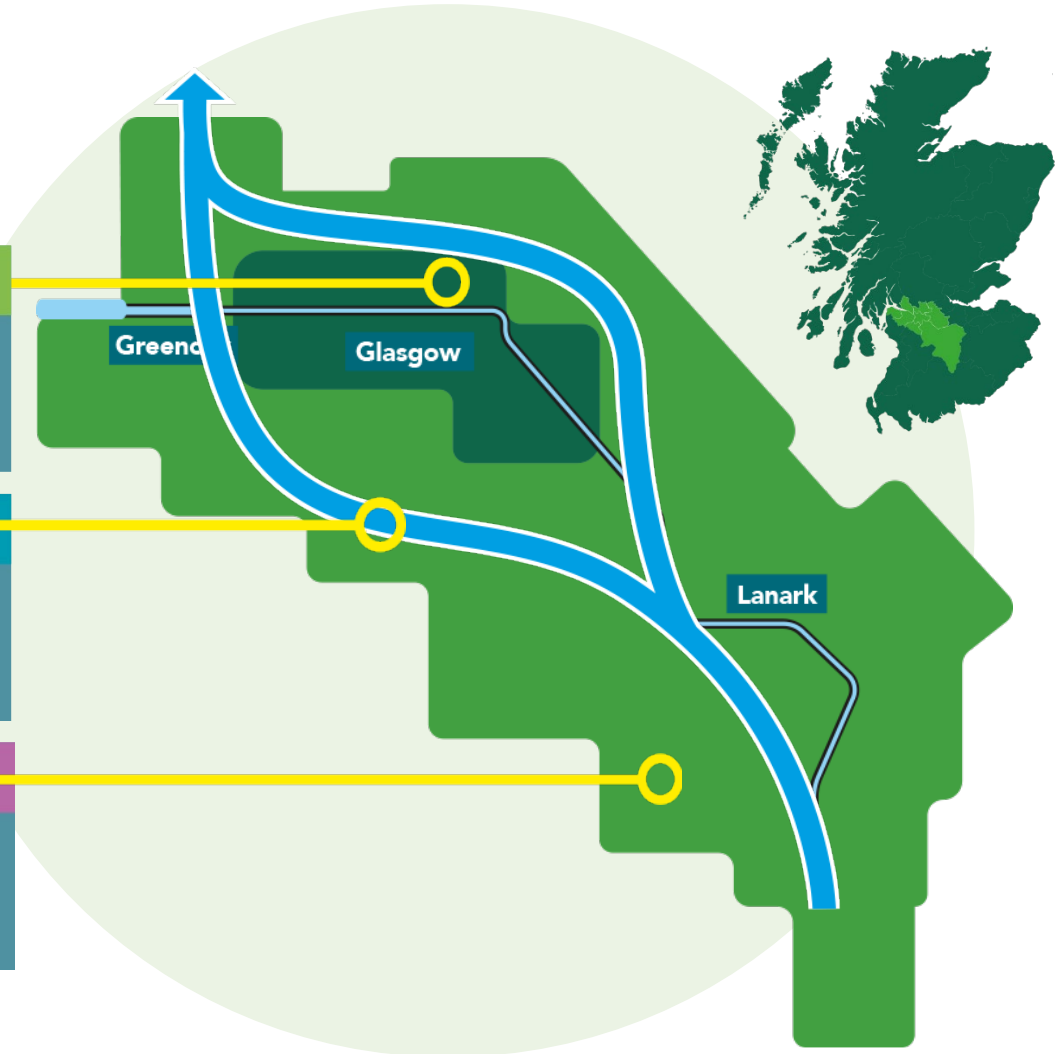
Connectivity

Targeted planting of **230** native woodlands creating a migratory route for wildlife.



Carbon

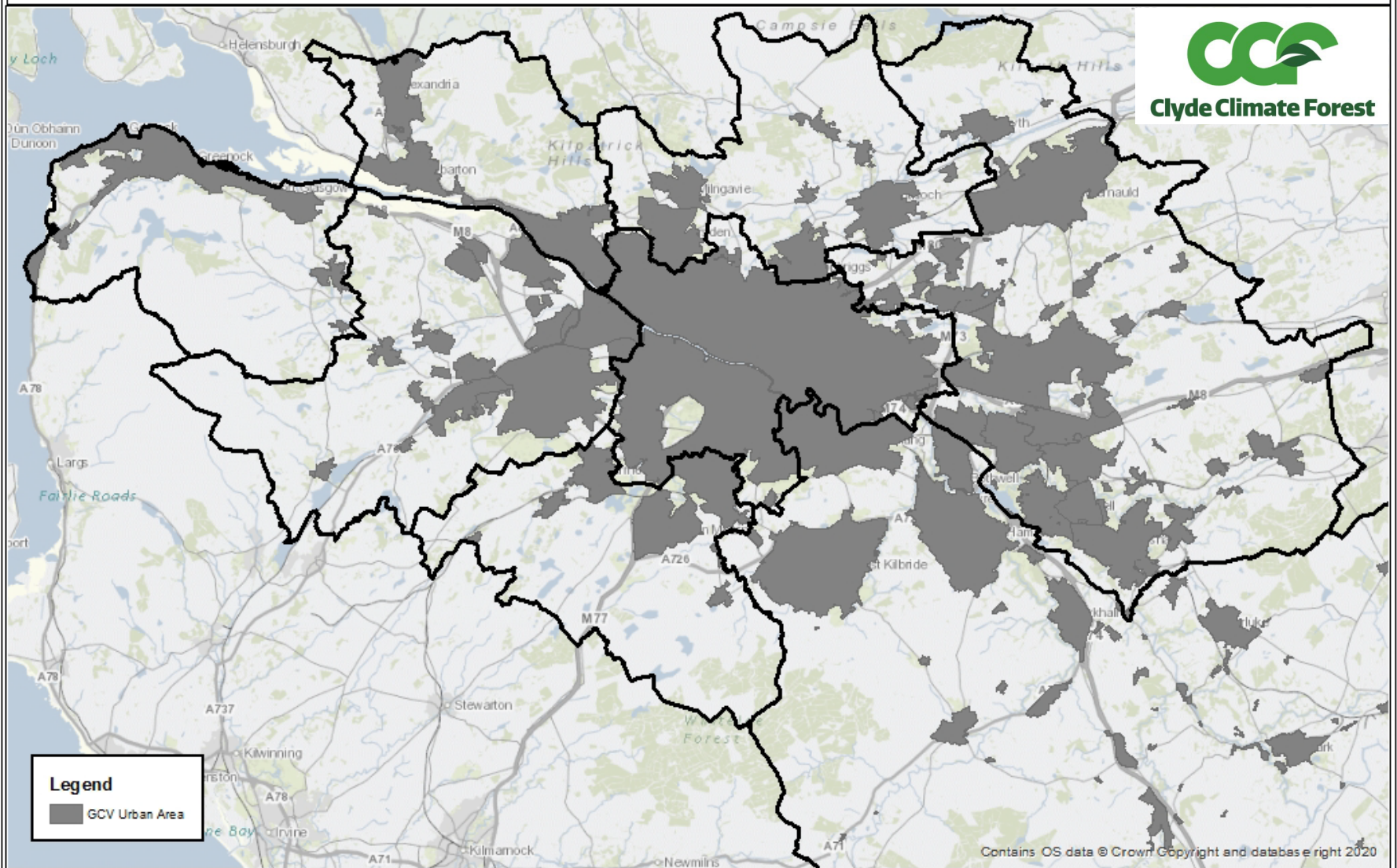
Up to **1,000 hectares** per year of new forests & woodlands planted across the region.



Glasgow City Region Urban Area



Clyde Climate Forest

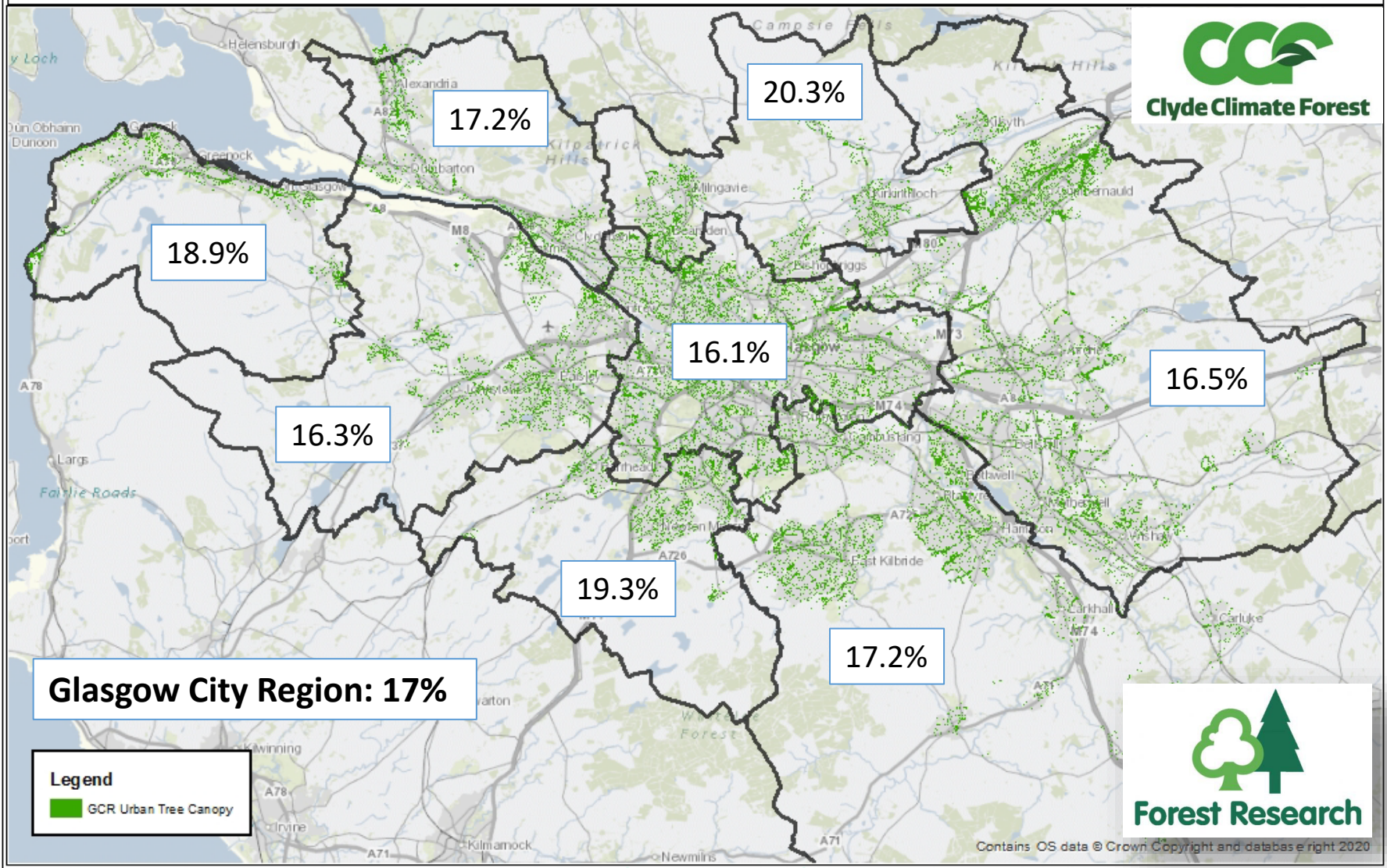


Contains OS data © Crown Copyright and database right 2020

This map is reproduced from Ordnance Survey material with the permission of Ordnance Survey on behalf of the Controller of Her Majesty's Stationery Office © Crown Copyright. Unauthorised reproduction infringes Crown copyright and may lead to prosecution or civil proceedings. Glasgow & The Clyde Valley Strategic Development Planning Authority 100032510 2022.

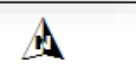
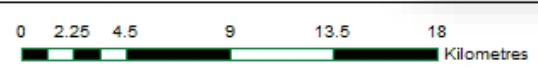


Glasgow City Region Urban Tree Canopy Cover



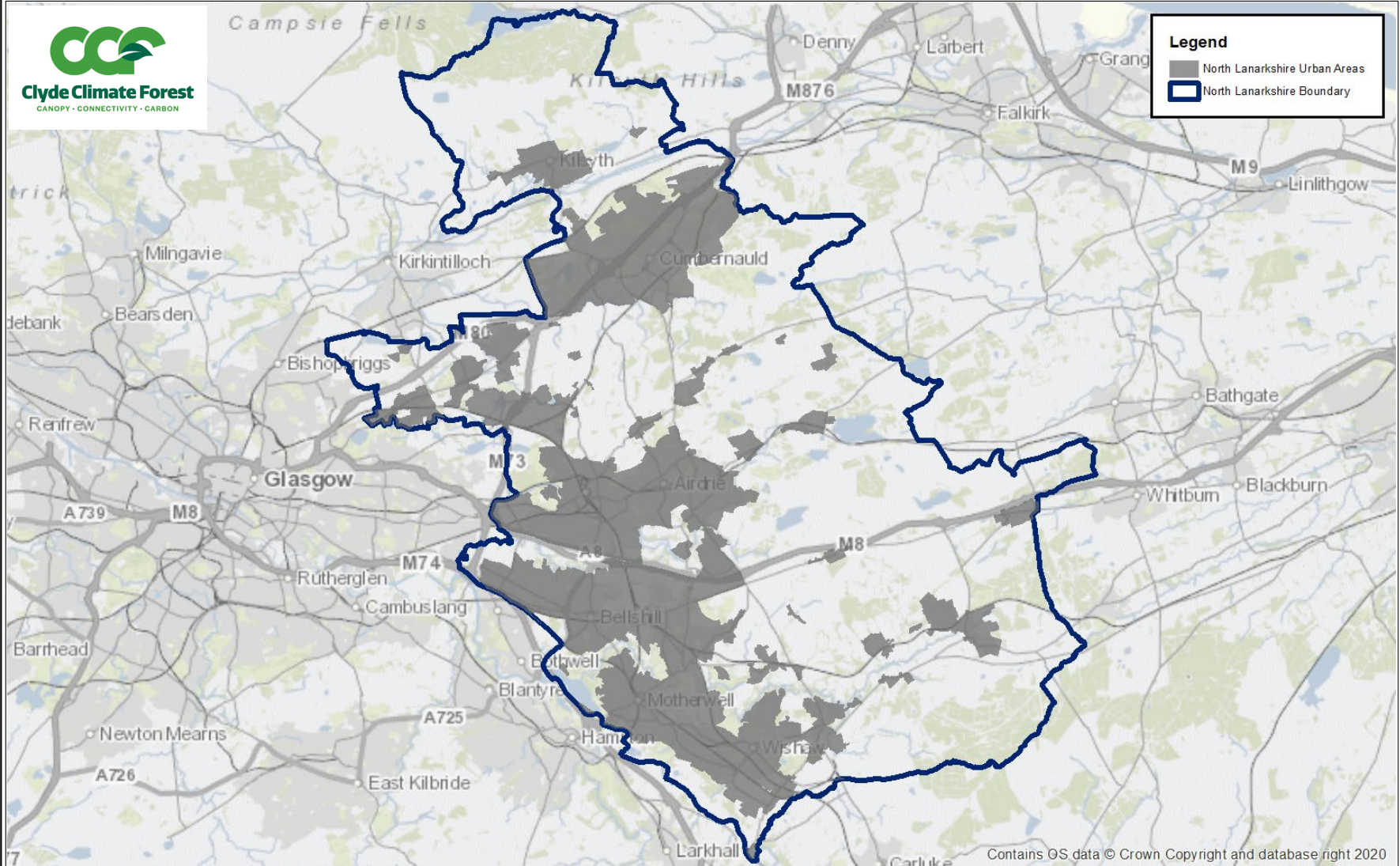
Legend
■ GCR Urban Tree Canopy

This map is reproduced from Ordnance Survey material with the permission of Ordnance Survey on behalf of the Controller of Her Majesty's Stationery Office © Crown Copyright. Unauthorised reproduction infringes Crown copyright and may lead to prosecution or civil proceedings. Glasgow & The Clyde Valley Strategic Development Planning Authority 100032510 2022.



Contains OS data © Crown Copyright and database right 2020

North Lanarkshire Urban Areas



Legend

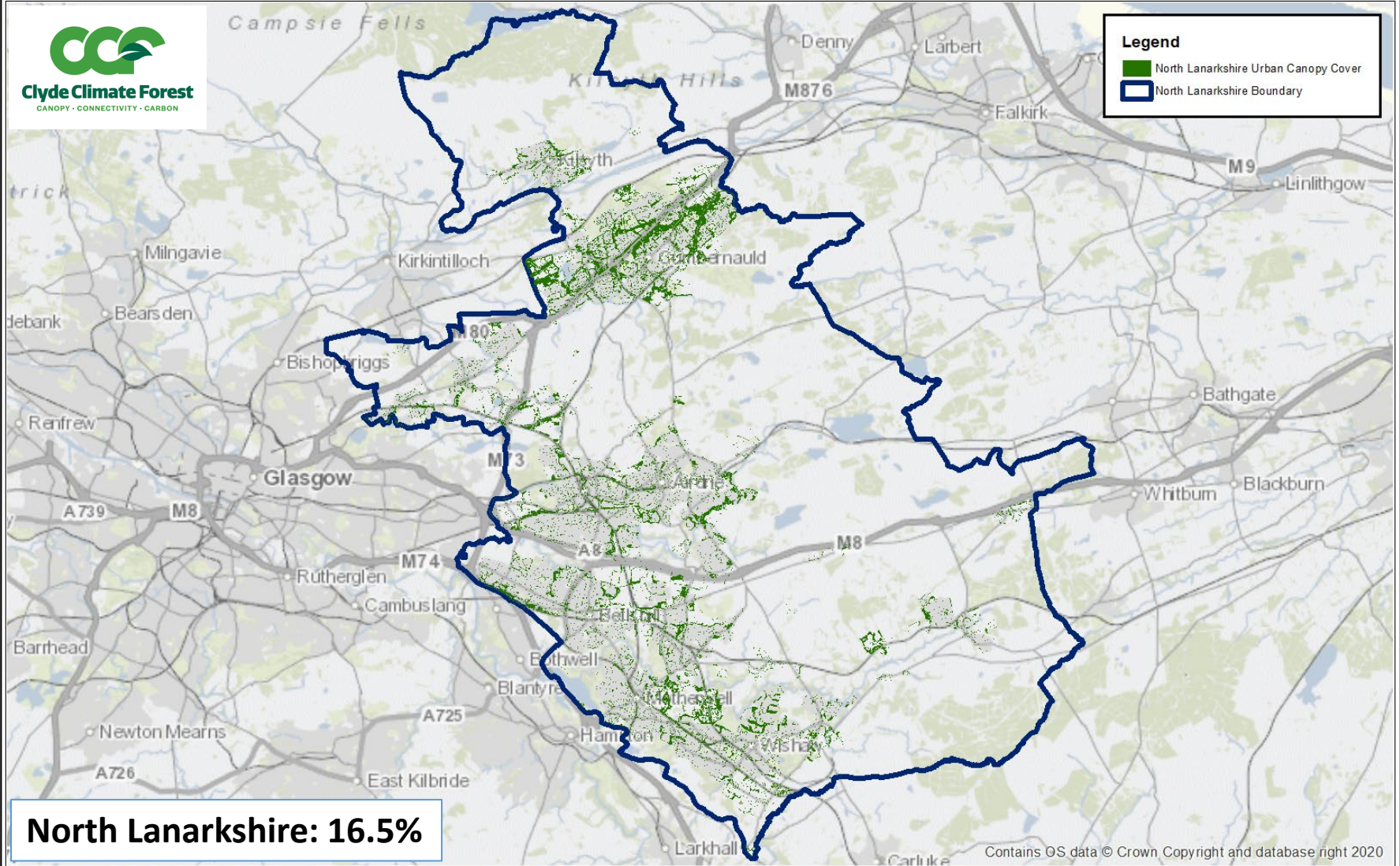
- North Lanarkshire Urban Areas
- North Lanarkshire Boundary

Contains OS data © Crown Copyright and database right 2020

This map is reproduced from Ordnance Survey material with the permission of Ordnance Survey on behalf of the Controller of Her Majesty's Stationery Office © Crown Copyright. Unauthorised reproduction infringes Crown copyright and may lead to prosecution or civil proceedings. Glasgow & The Clyde Valley Strategic Development Planning Authority 100032510 2022.



North Lanarkshire Urban Canopy Cover



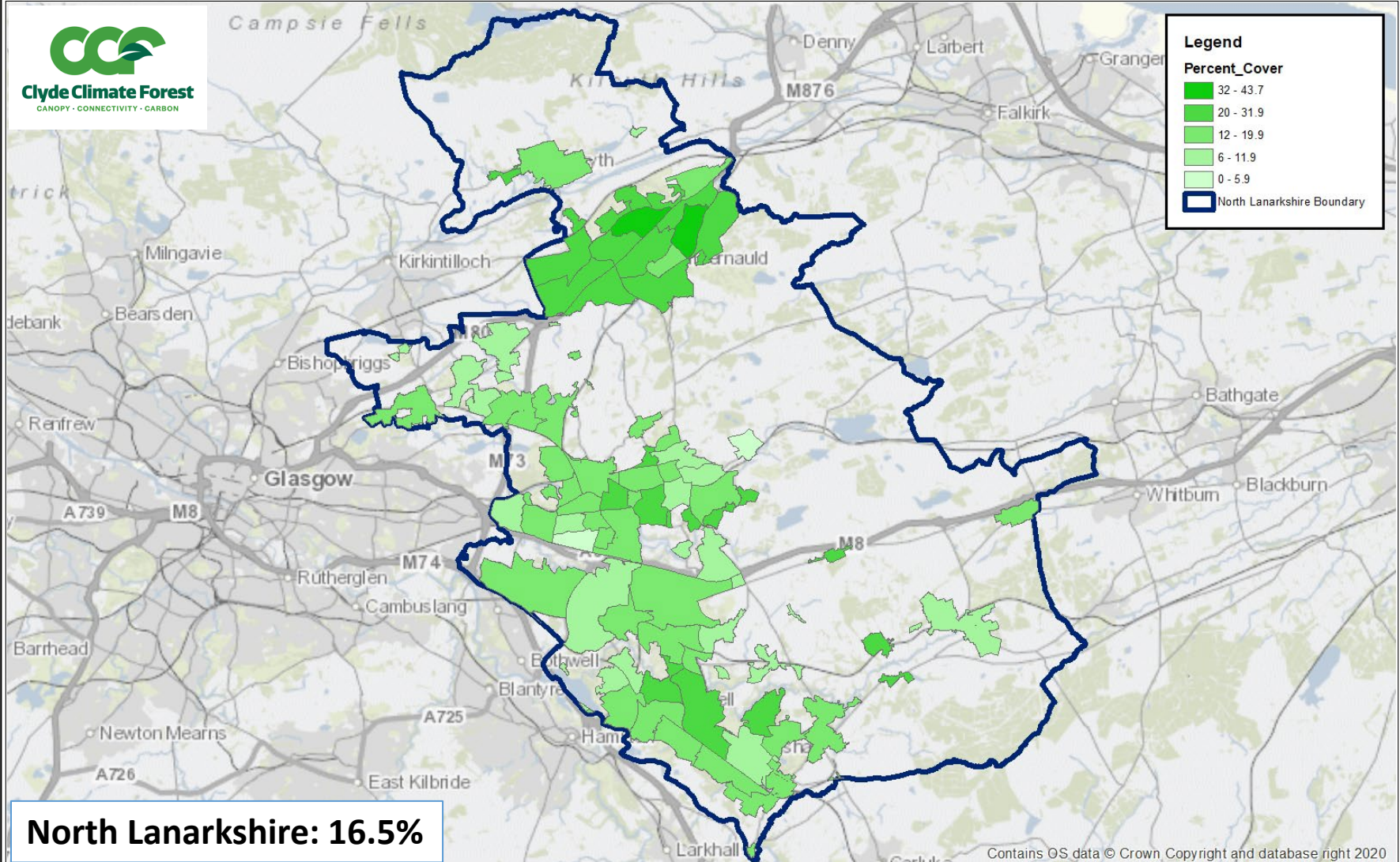
North Lanarkshire: 16.5%

Contains OS data © Crown Copyright and database right 2020

This map is reproduced from Ordnance Survey material with the permission of Ordnance Survey on behalf of the Controller of Her Majesty's Stationery Office © Crown Copyright. Unauthorised reproduction infringes Crown copyright and may lead to prosecution or civil proceedings. Glasgow & The Clyde Valley Strategic Development Planning Authority 100032510 2022.



North Lanarkshire Urban Canopy Percentage by Community Council



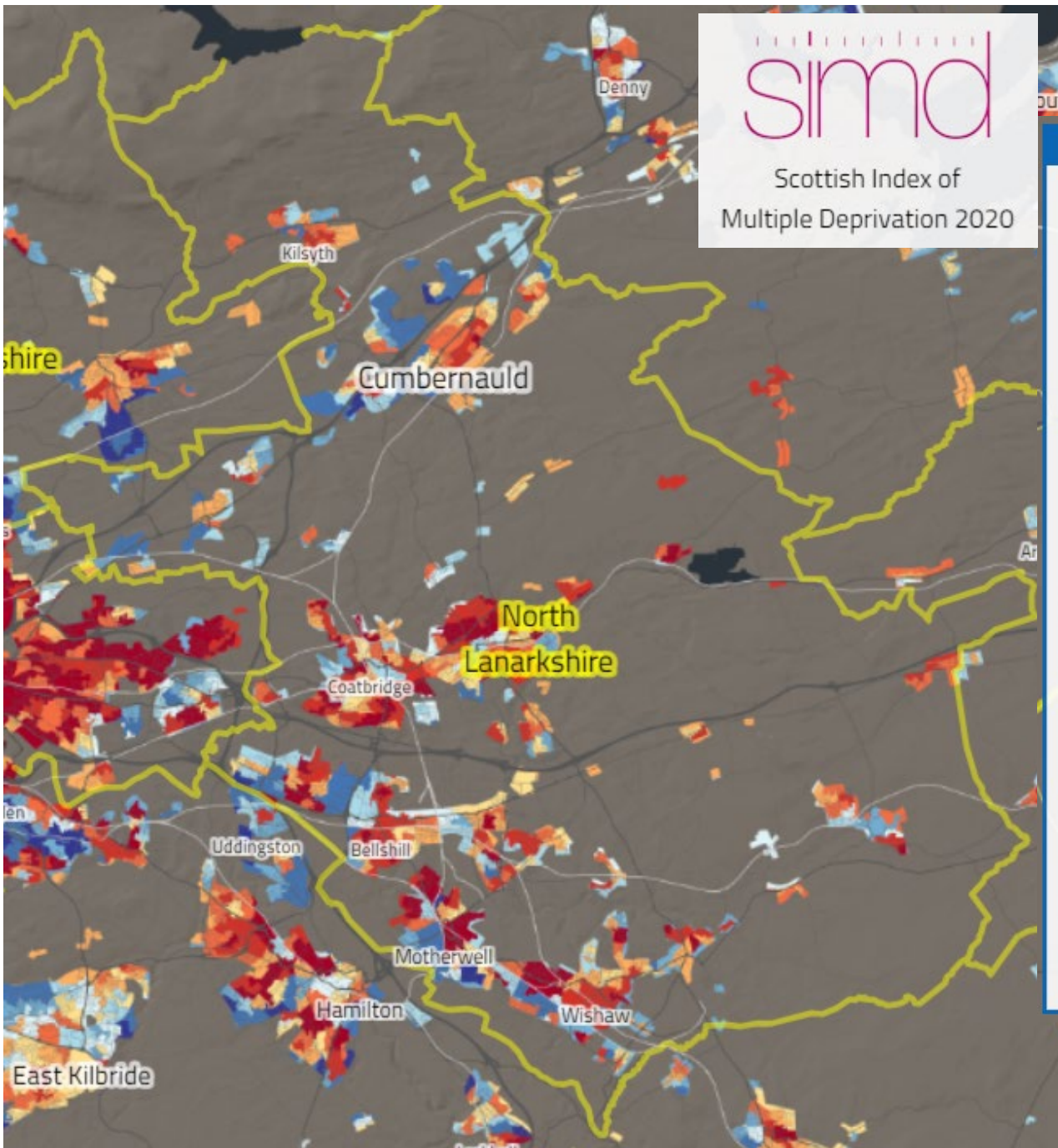
North Lanarkshire: 16.5%

Contains OS data © Crown Copyright and database right 2020

This map is reproduced from Ordnance Survey material with the permission of Ordnance Survey on behalf of the Controller of Her Majesty's Stationery Office © Crown Copyright. Unauthorised reproduction infringes Crown copyright and may lead to prosecution or civil proceedings. Glasgow & The Clyde Valley Strategic Development Planning Authority 100032510 2022.



simd
 Scottish Index of
 Multiple Deprivation 2020



▼ CURRENT DATA ZONE

S01011530
 Bellshill Central (part)

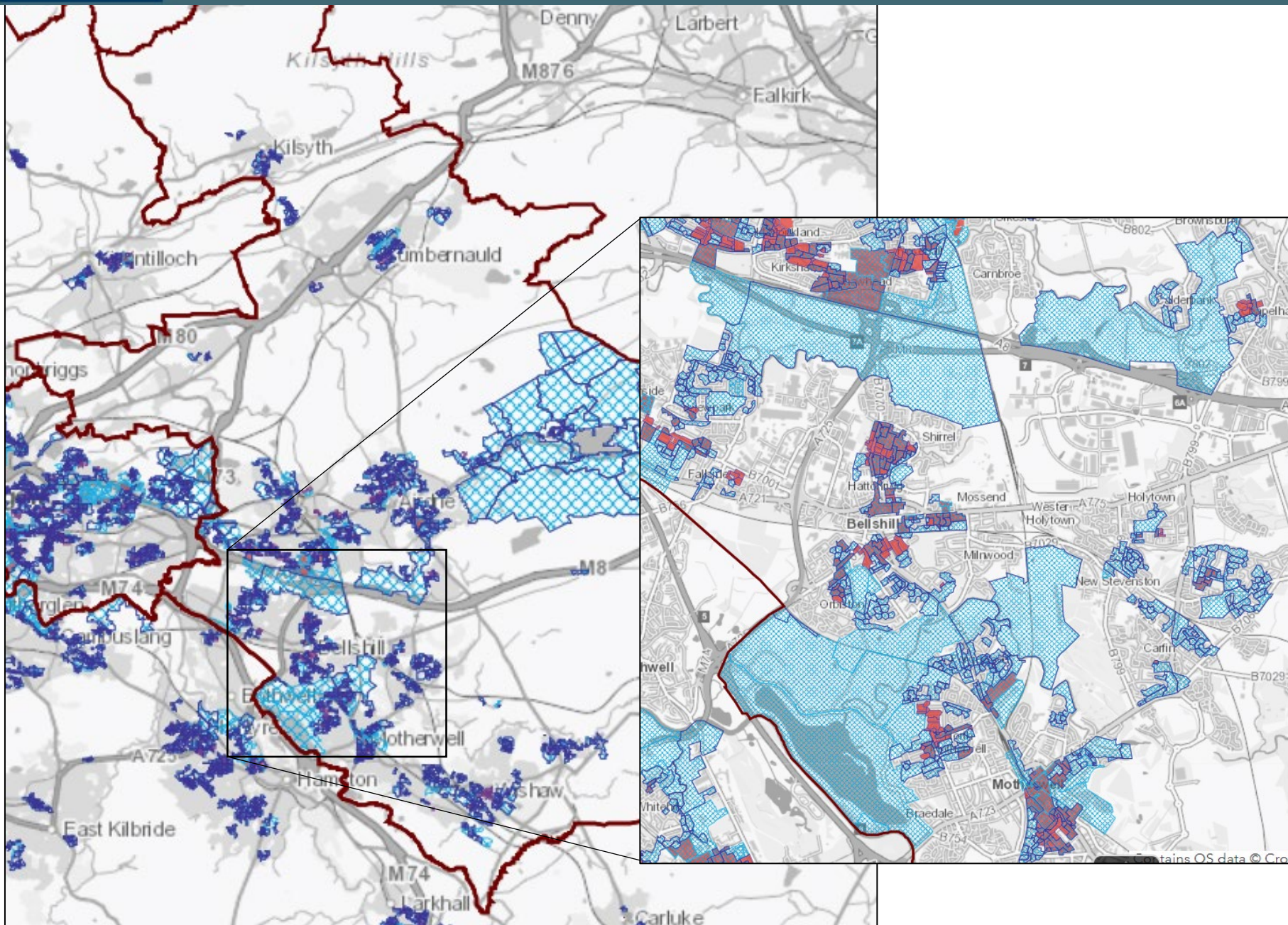
Local Authority: North Lanarkshire

Total	Population		
	Working Age	Income Deprived	Employ Deprived
903	592	194	98

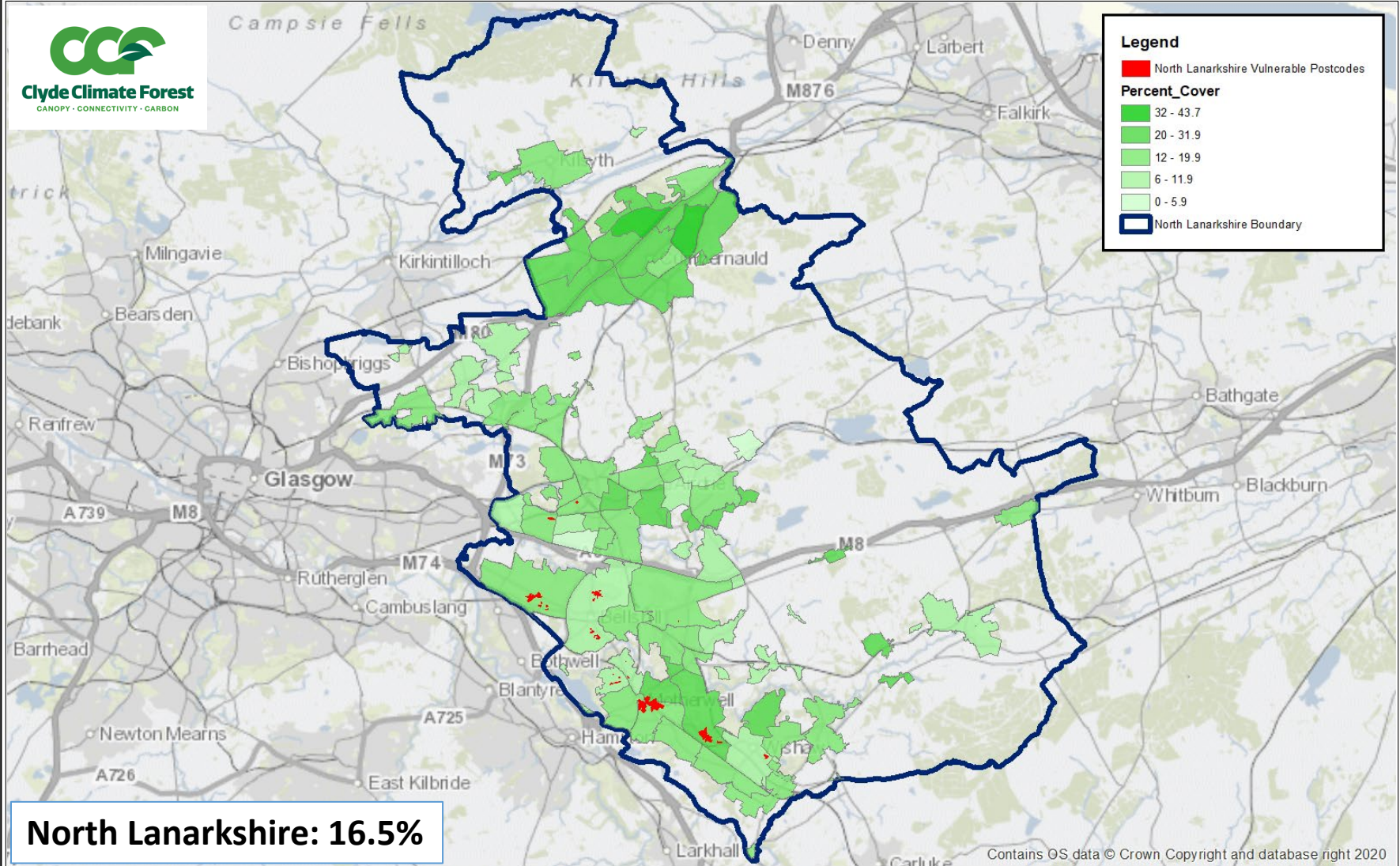
Decile 2, Quintile 1

Overall rank: 1122

- Income domain rank: 1236
- Employment domain rank: 1109
- Health domain rank: 1103
- Education/skills domain rank: 1008
- Housing domain rank: 1192
- Geographic access domain rank: 4950
- Crime rank: 844



North Lanarkshire Urban Canopy Percentage by Community Council



Legend

- North Lanarkshire Vulnerable Postcodes

Percent_Cover

- 32 - 43.7
- 20 - 31.9
- 12 - 19.9
- 6 - 11.9
- 0 - 5.9

North Lanarkshire Boundary

North Lanarkshire: 16.5%

Contains OS data © Crown Copyright and database right 2020

This map is reproduced from Ordnance Survey material with the permission of Ordnance Survey on behalf of the Controller of Her Majesty's Stationery Office © Crown Copyright. Unauthorised reproduction infringes Crown copyright and may lead to prosecution or civil proceedings. Glasgow & The Clyde Valley Strategic Development Planning Authority 100032510 2022.



North Lanarkshire Urban Canopy Percentage by Community Council



Clyde Climate Forest
CANOPY · CONNECTIVITY · CARBON

Legend

■ North Lanarkshire Vulnerable Postcodes

Percent_Cover

■ 32 - 43.7

■ 20 - 31.9

■ 12 - 19.9

■ 6 - 11.9

■ 0 - 5.9

 North Lanarkshire Community Councils

 North Lanarkshire Boundary

Bellshill CC: 10.2%
11 Vulnerable Postcodes

N. Motherwell CC: 7.9%
3 Vulnerable Postcodes

Central Wishaw CC: 10.6%
2 Vulnerable Postcodes

North Lanarkshire: 16.5%

Contains OS data © Crown Copyright and database right 2020

This map is reproduced from Ordnance Survey material with the permission of Ordnance Survey on behalf of the Controller of Her Majesty's Stationery Office © Crown Copyright. Unauthorised reproduction infringes Crown copyright and may lead to prosecution or civil proceedings. Glasgow & The Clyde Valley Strategic Development Planning Authority 100032510 2022.





TREE EQUITY SCORE UK

bellshil



Data Zone ID S01011529

Population: 529

Urban area: 0.11 sq-km (100% of Data Zone area)

North Lanarkshire, Scotland

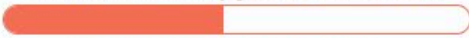
72

Tree Equity Score

Ranked 283rd of 389 Data Zones in North Lanarkshire

Priority: **HIGH**

Current canopy cover: 11%



Canopy cover goal: 24%

Score indicators

Priority Index

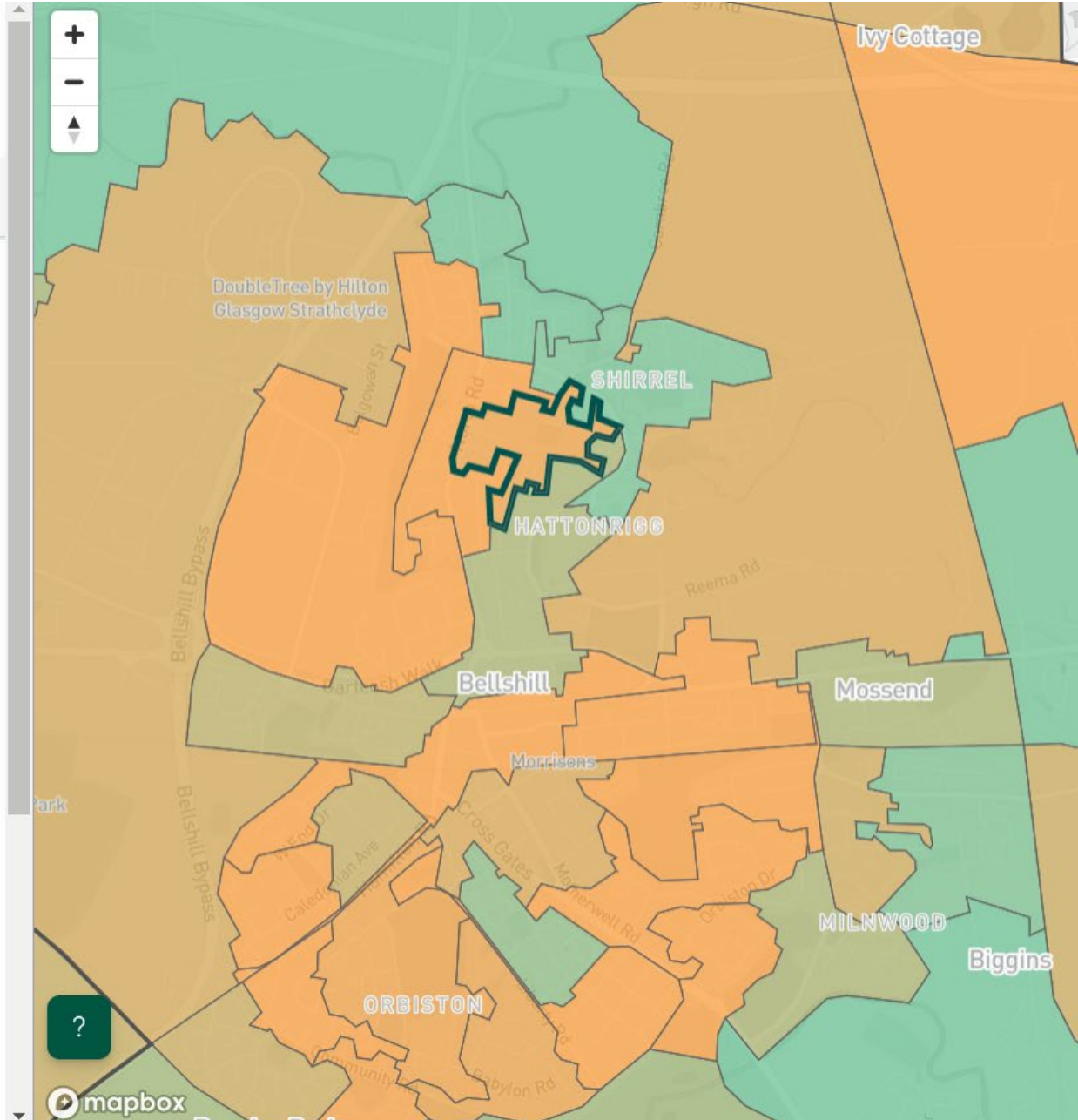
Income Ranking (IMD)
317 out of 6,976

Air pollution: PM2.5, NO2
5.2 µg/m3, 10.8 µg/m3



Health Ranking (IMD)
495 out of 6,976

Heat disparity
3.41° C



North Lanarkshire Urban Canopy Percentage by Community Council



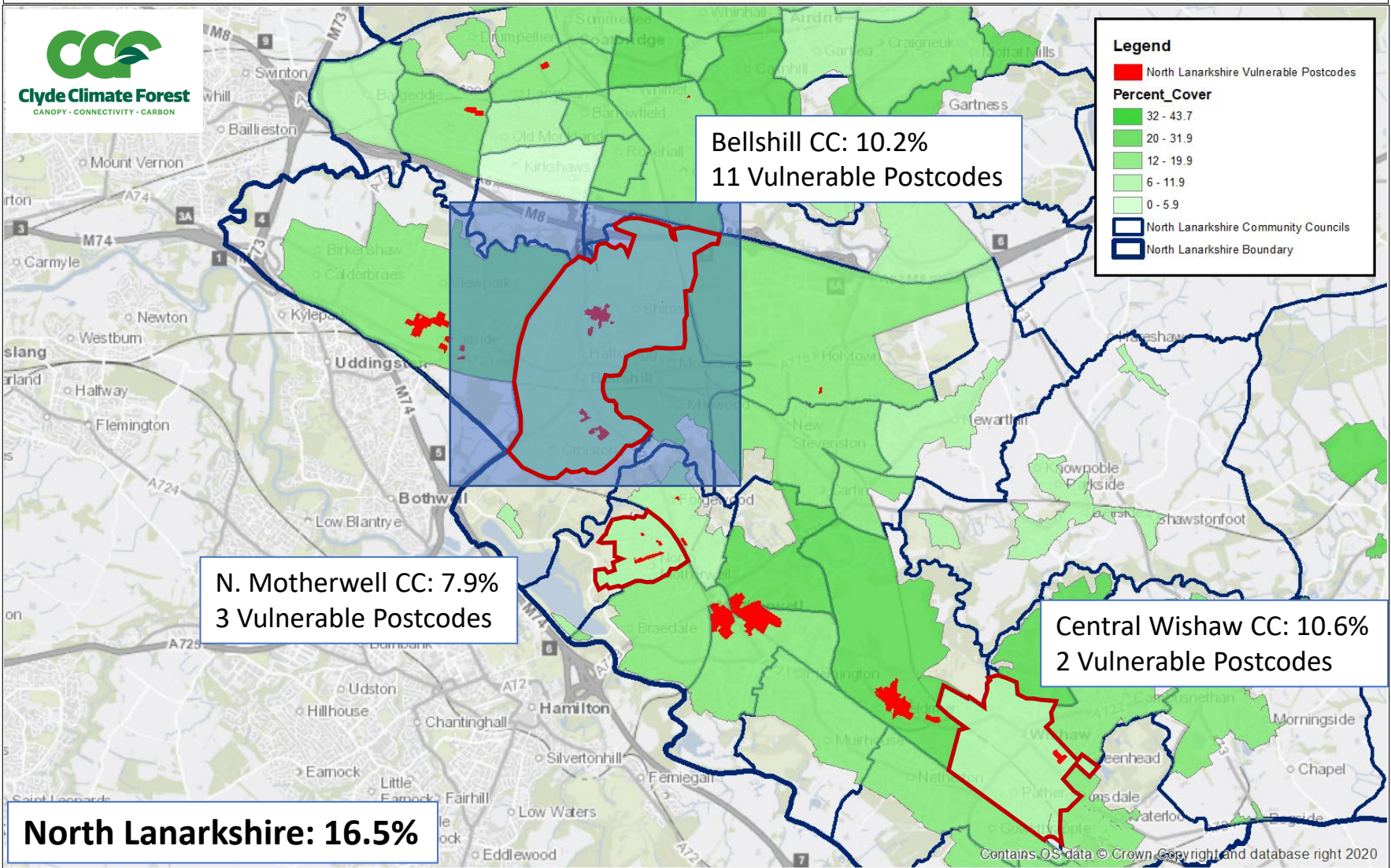
Legend

- North Lanarkshire Vulnerable Postcodes

Percent_Cover

- 32 - 43.7
- 20 - 31.9
- 12 - 19.9
- 6 - 11.9
- 0 - 5.9

- North Lanarkshire Community Councils
- North Lanarkshire Boundary

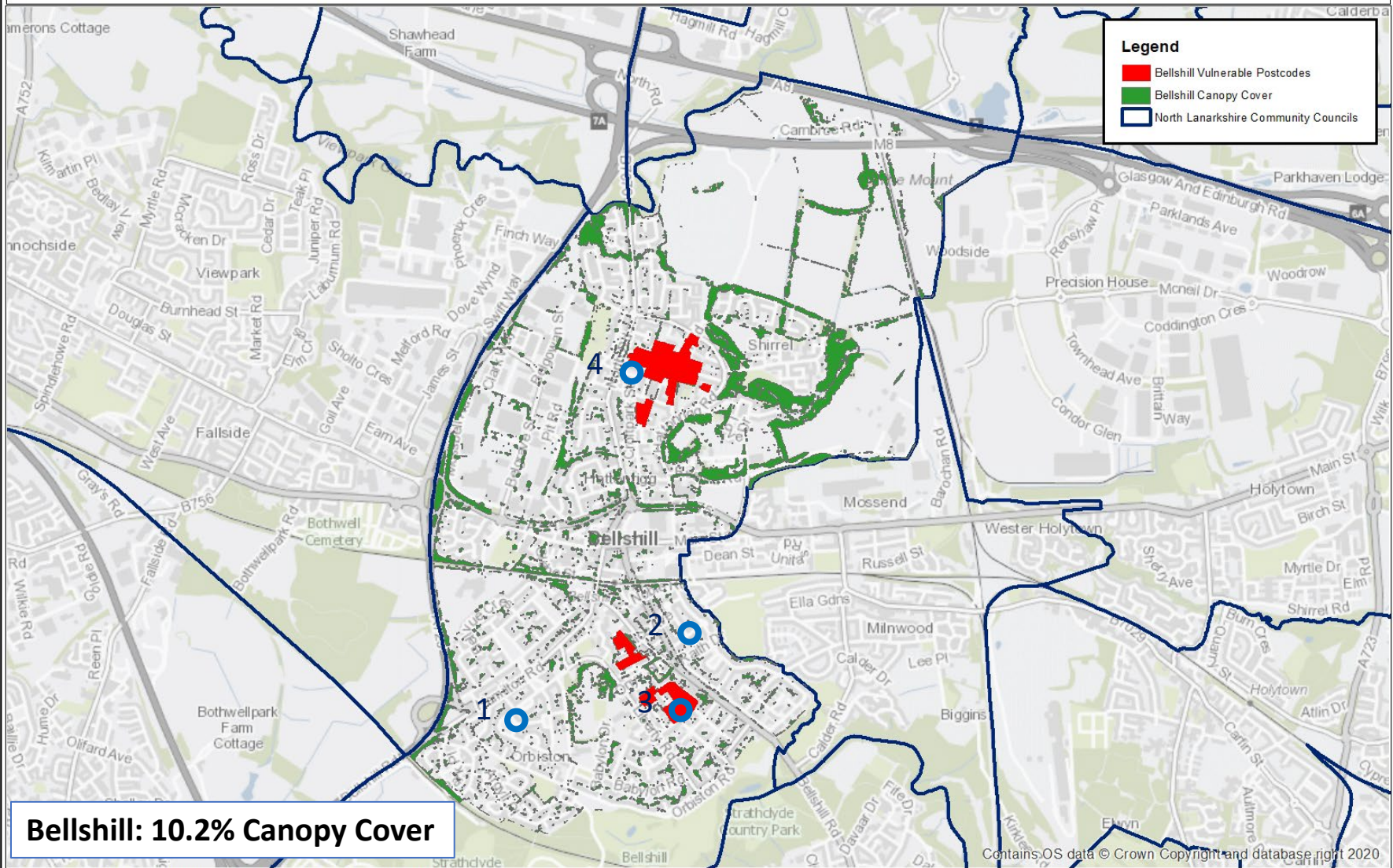


This map is reproduced from Ordnance Survey material with the permission of Ordnance Survey on behalf of the Controller of Her Majesty's Stationery Office © Crown Copyright. Unauthorised reproduction infringes Crown copyright and may lead to prosecution or civil proceedings. Glasgow & The Clyde Valley Strategic Development Planning Authority 100032510 2022.

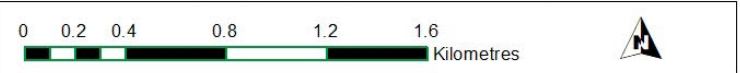


Contains OS data © Crown Copyright and database right 2020

Bellshill Urban Canopy Cover & Vulnerable Postcodes

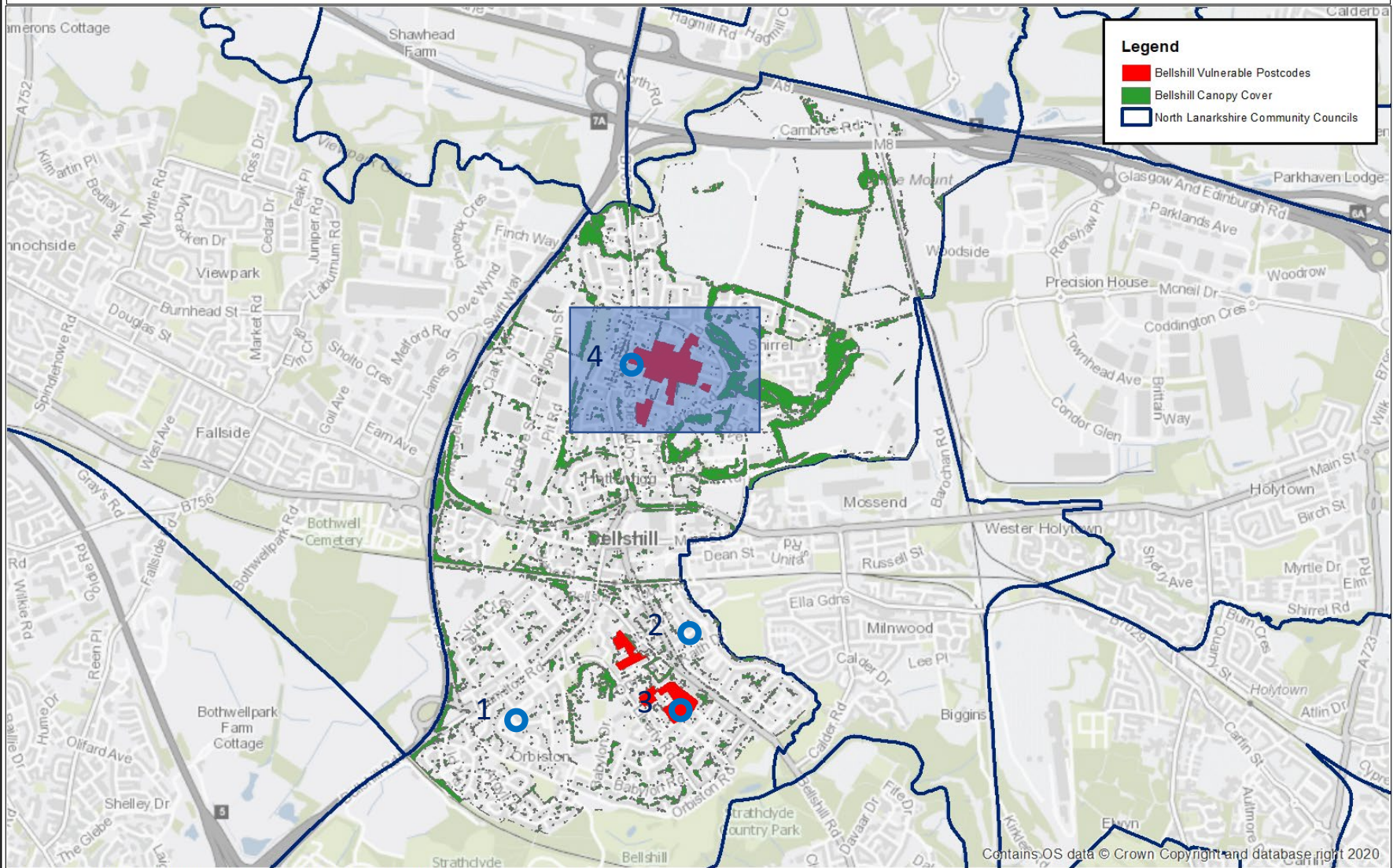


This map is reproduced from Ordnance Survey material with the permission of Ordnance Survey on behalf of the Controller of Her Majesty's Stationery Office © Crown Copyright. Unauthorised reproduction infringes Crown copyright and may lead to prosecution or civil proceedings. Glasgow & The Clyde Valley Strategic Development Planning Authority 100032510 2022.





Bellshill Urban Canopy Cover & Vulnerable Postcodes



This map is reproduced from Ordnance Survey material with the permission of Ordnance Survey on behalf of the Controller of Her Majesty's Stationery Office © Crown Copyright. Unauthorised reproduction infringes Crown copyright and may lead to prosecution or civil proceedings. Glasgow & The Clyde Valley Strategic Development Planning Authority 100032510 2022.

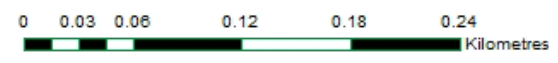




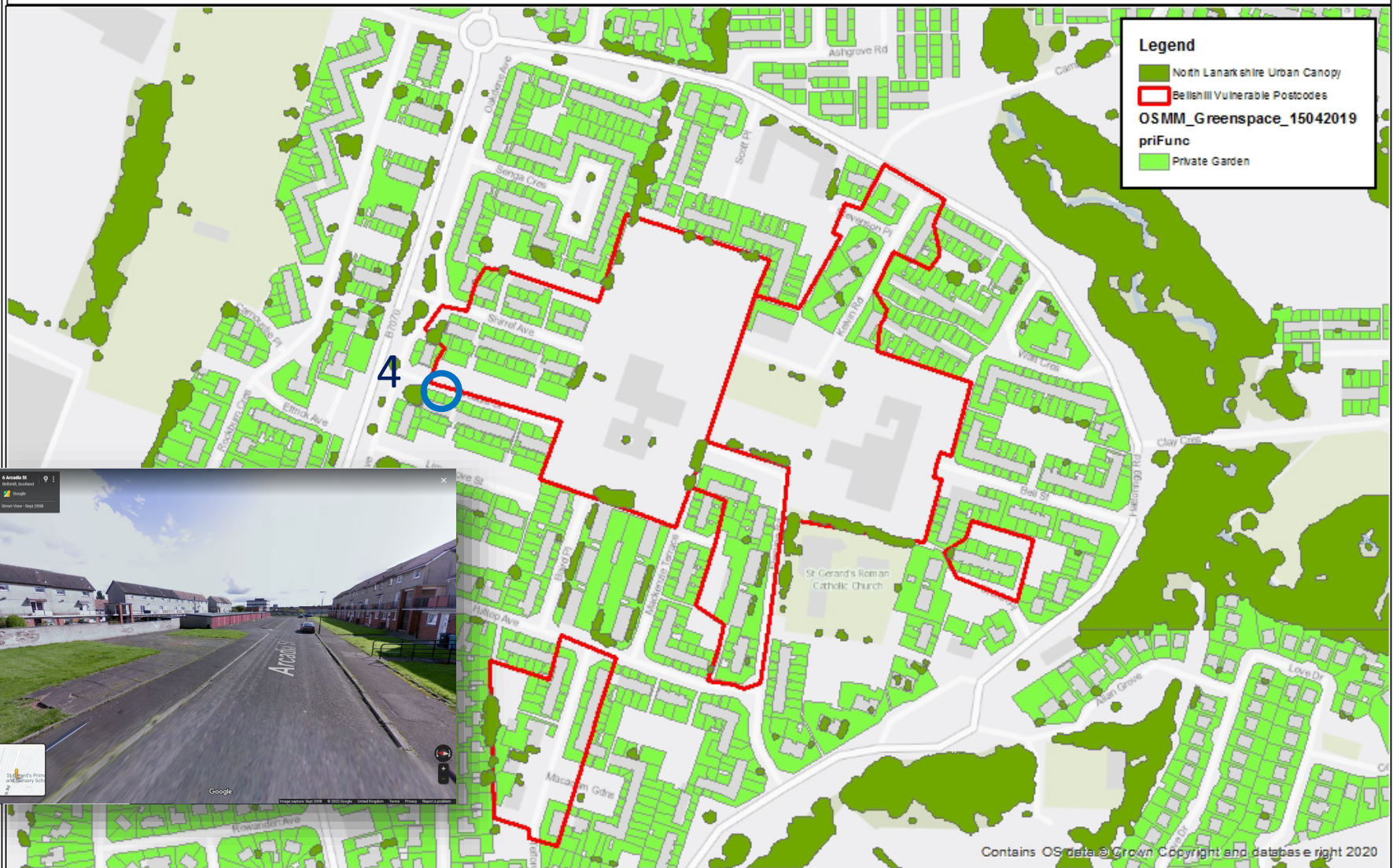
Bellshill Community Council - Vulnerable Postcodes, Urban Canopy & Greenspace



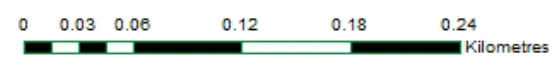
This map is reproduced from Ordnance Survey material with the permission of Ordnance Survey on behalf of the Controller of Her Majesty's Stationery Office © Crown Copyright. Unauthorised reproduction infringes Crown copyright and may lead to prosecution or civil proceedings. Glasgow & The Clyde Valley Strategic Development Planning Authority 100032510 2022.



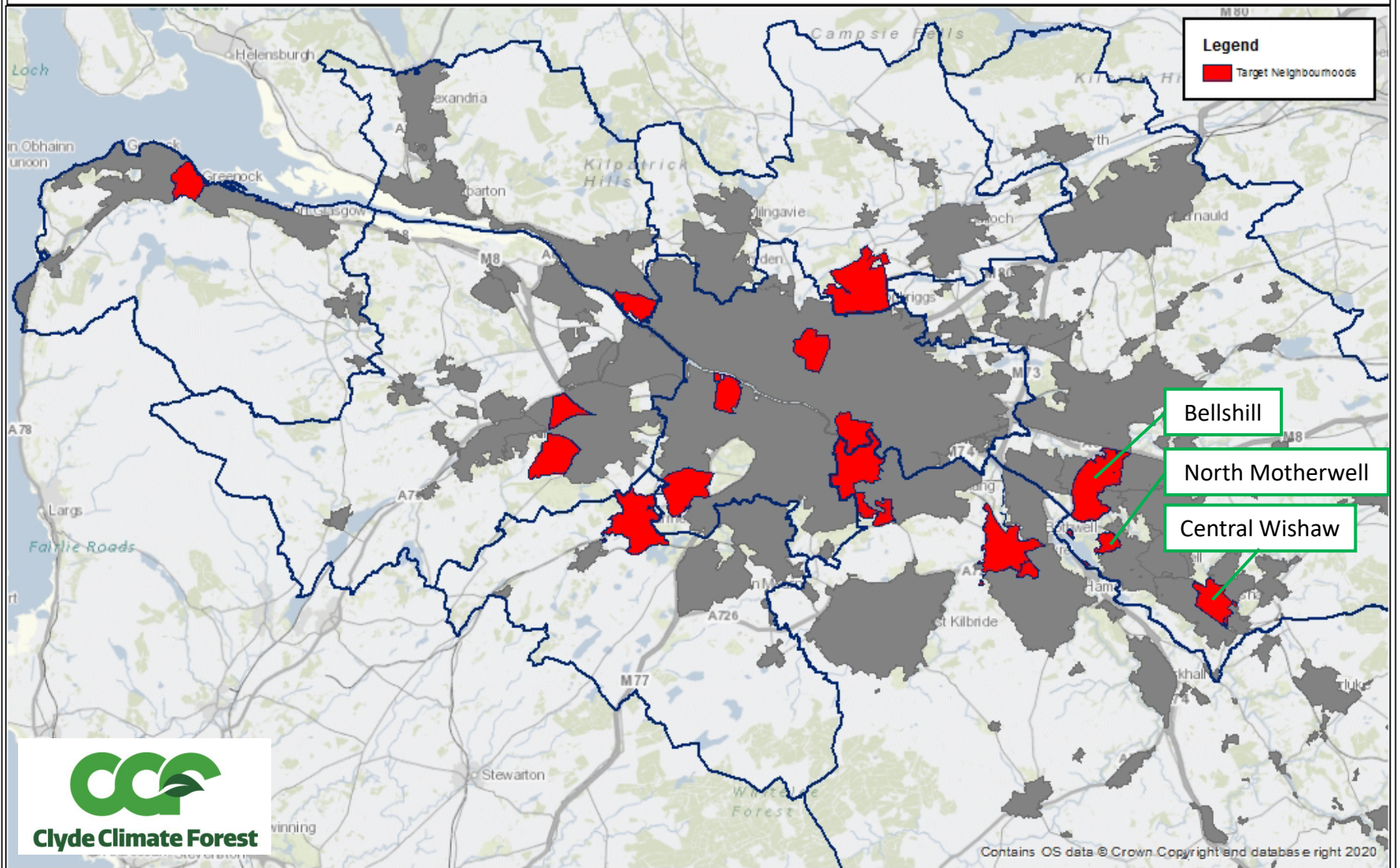
Bellshill Community Council - Vulnerable Postcodes, Urban Canopy & Private Gardens



This map is reproduced from Ordnance Survey material with the permission of Ordnance Survey on behalf of the Controller of Her Majesty's Stationery Office © Crown Copyright. Unauthorised reproduction infringes Crown copyright and may lead to prosecution or civil proceedings. Glasgow & The Clyde Valley Strategic Development Planning Authority 100032510 2022.



Clyde Climate Forest - Provisional Target Neighbourhoods

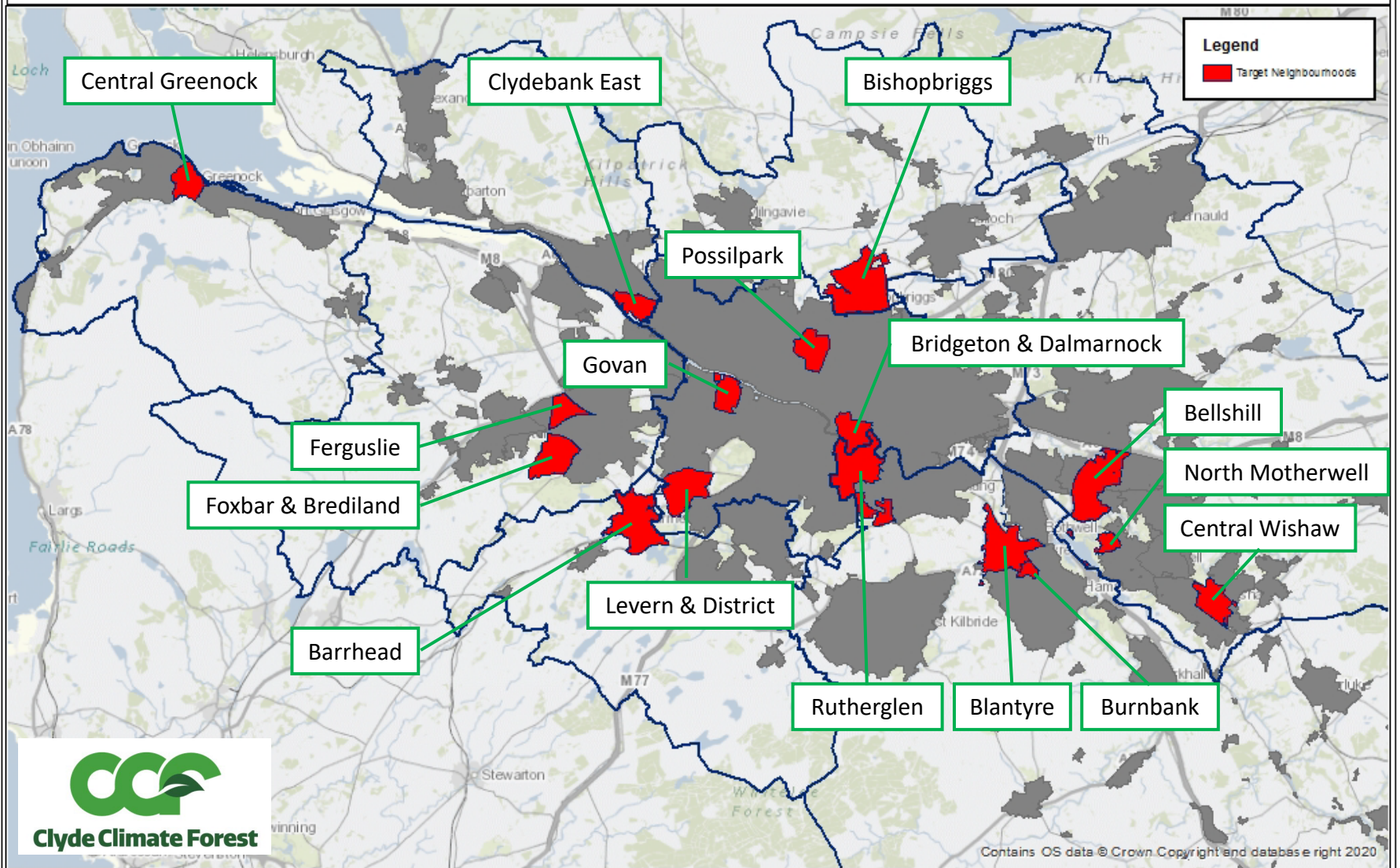


Contains OS data © Crown Copyright and database right 2020

This map is reproduced from Ordnance Survey material with the permission of Ordnance Survey on behalf of the Controller of Her Majesty's Stationery Office © Crown Copyright. Unauthorised reproduction infringes Crown copyright and may lead to prosecution or civil proceedings. Glasgow & The Clyde Valley Strategic Development Planning Authority 100032510 2022.



Clyde Climate Forest - Provisional Target Neighbourhoods



This map is reproduced from Ordnance Survey material with the permission of Ordnance Survey on behalf of the Controller of Her Majesty's Stationery Office © Crown Copyright. Unauthorised reproduction infringes Crown copyright and may lead to prosecution or civil proceedings. Glasgow & The Clyde Valley Strategic Development Planning Authority 100032510 2022.



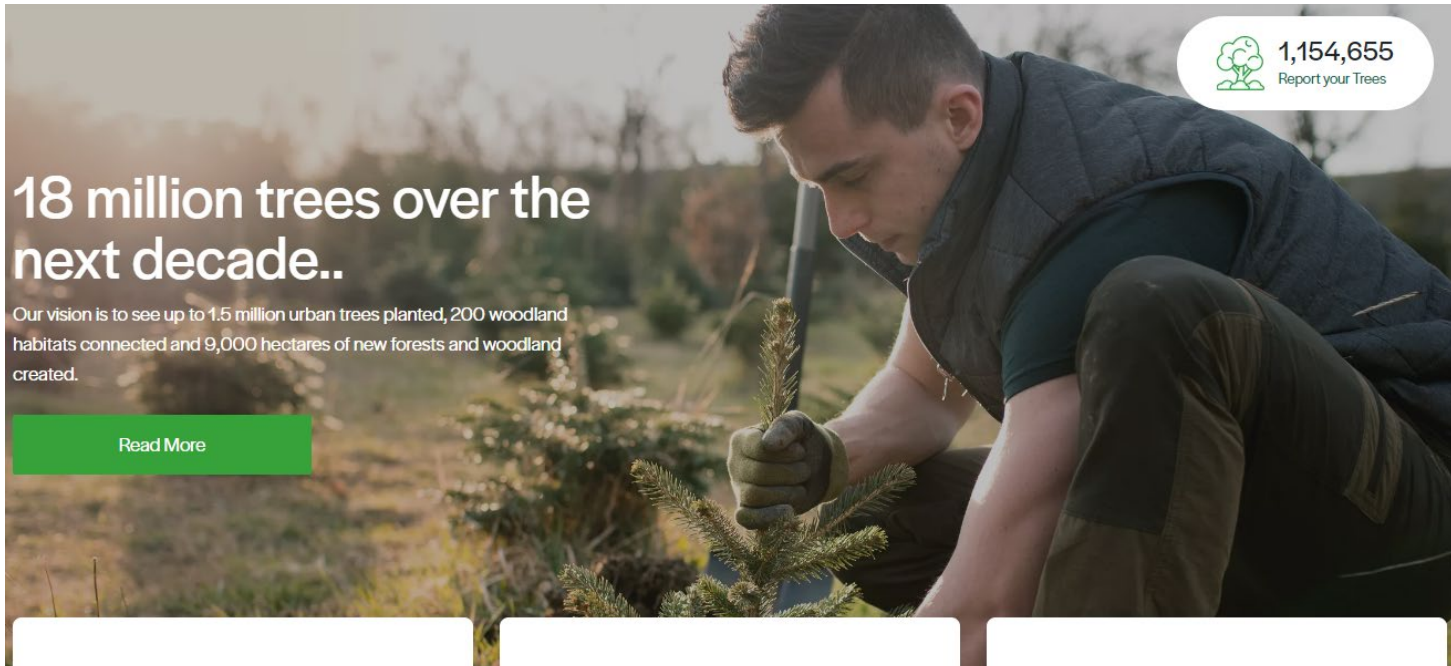
Contains OS data © Crown Copyright and database right 2020


Urban Tree Planting to Date

- **CCF Delivery 2022/23**
 - 4 Target Neighbourhoods
 - 120 Standards Planted
 - 3245 Whips Planted
 - 77 Community Volunteers Engaged
 - 177 School Children Engaged
- **CCF Delivery 2023/24**
 - 10 Target Neighbourhoods
 - 271 Standards Planted
 - 9200 Whips Planted
 - Engagement currently ongoing



<https://www.clydeclimateforest.co.uk/>



 1,154,655
Report your Trees

18 million trees over the next decade..

Our vision is to see up to 1.5 million urban trees planted, 200 woodland habitats connected and 9,000 hectares of new forests and woodland created.

[Read More](#)

For Communities

Learn how to get involved with a local tree planting project.

[Read More](#)

For Business

Learn more about business opportunities, such as tree sponsorship and reaching Net Zero.

[Read More](#)

For Landowners

Learn more about the multiple benefits of planting trees on your land from carbon credits to providing shelter.

[Read More](#)

chris.stark@greenactiontrust.org