

**Alan McHaffie**

Senior Woodland and Recreation Officer  
Belfast City Council

&

**John Rose**

Senior Urban Forest Consultant  
Treeconomics



WOODLAND  
TRUST

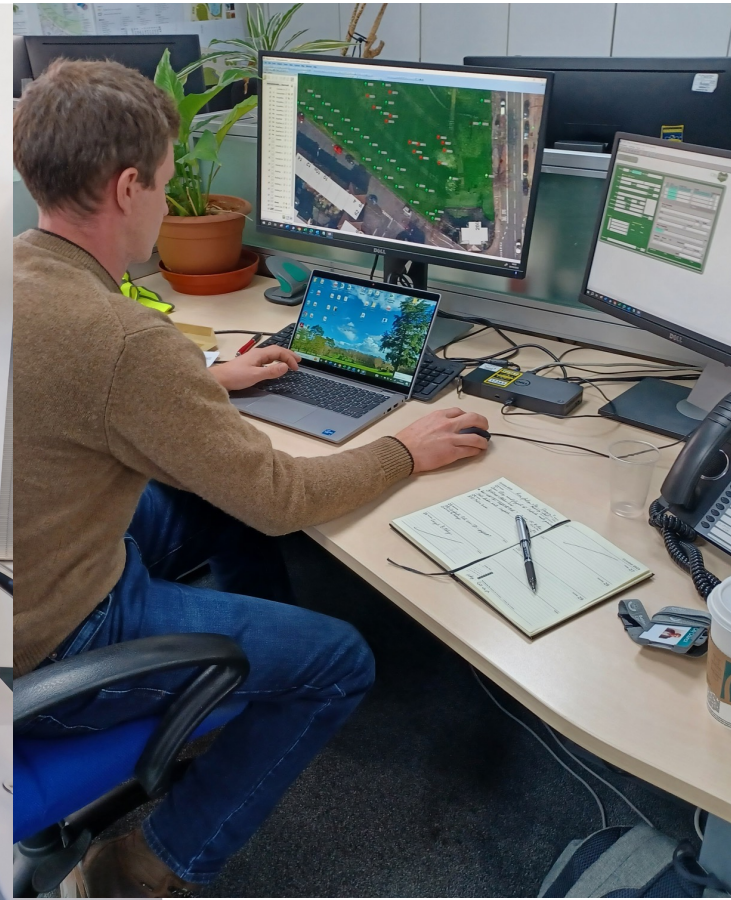


**Belfast**  
City Council





- I have a team of 4 qualified, and experienced Woodland officers
- I have an annual budget for both park and street trees, the Department for Infrastructure (DfI) own the street trees
- BCC has an inventory of all its trees and an in-house designed tree database which we are currently in the process of updating
- However, we were missing an important piece – a Tree Strategy





## Overview of Belfast Tree Strategy:

1. We engaged with key partner/ stakeholders, via several workshops
2. The purpose of the Belfast Tree Strategy - to give the Council a structure and direction in managing, improving and sustaining our city treescape
3. The Tree Strategy has a 10-year life span with 37 key priorities/actions
4. Within the Tree Strategy we incorporated an independent review of the 37 priority/actions. The review will be undertaken after the first 12 months, then once every three years thereafter, to keep us focused



Belfast  
City Council



## 1<sup>st</sup> Survey – Public Questionnaire

Q. I want the trees in Belfast to...

Please rank in order of importance, with 1 being the most important and 10 being the least important.

1. Provide wildlife habitat
2. Improve air quality (reduce air pollution)
3. Help to make the place beautiful
4. Reduce noise from noisy roads and highways
5. Create shade to help keep my house cool
6. Screen and provide privacy
7. Improve my mental and physical health
8. Increase my property value
9. Prevent the city from becoming a hotter place
10. Reduce flooding/stormwater run-off

## Survey Responses

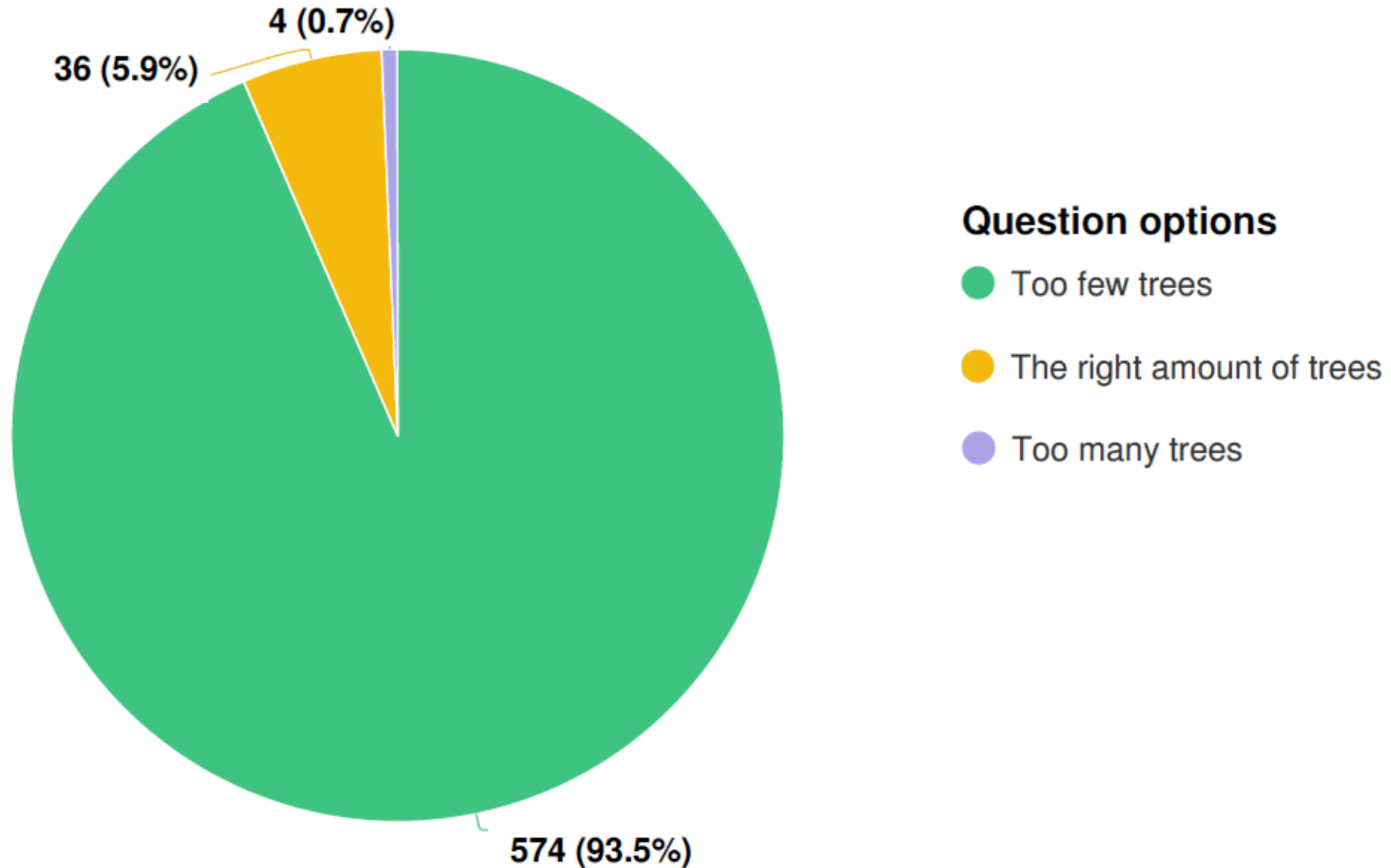
27 July 2022 - 27 August 2022  
Belfast Tree Survey

## Your Say Belfast- Belfast Tree Strategy





Q3 Thinking about Belfast today, do you think there are too many, too few, or about the right amount of trees across Belfast?







## Tree Strategy Vision

“That Belfast is a city which focuses on protecting, enhancing and expanding its woodlands, hedges and trees, connecting people to nature, and ensuring that these continue to be a major asset to everyone who lives in, works in and visits our city.”





We hosted 5 Public Consultation events - one in North, South, West and East Belfast and one within the City Centre



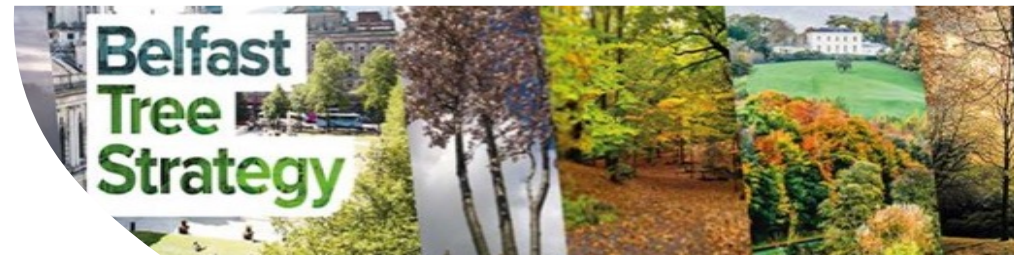


*“The goals are great, but work needs to be done to ensure their implementation.”*

*“Love seeing more and more trees planted in Belfast City. Please keep this going.”*

*“It’s important to keep the greenery for the future generations. Acting now decisively is the best we can offer to our next generations.”*

*“A volunteer drive would be fantastic to engage the community in the drive to increase trees, as well as a scheme to teach people how to plant trees in their own gardens safely.”*







---

# Belfast Tree Strategy

## 2023-2033

---



**Belfast**  
City Council



## Trees and Urban Forest Structure

- T1 – Relative tree canopy cover
- T2 – Size (Age) diversity
- T3 – Species diversity
- T4 – Species suitability (including allergenicity and ESD's)
- T5 – Publicly owned trees (trees managed "intensively")
- T6 – Publicly owned woodlands and natural areas (trees managed "extensively")
- T7 – Trees on private property
- T8 – Other Elements of the UF (including Biodiversity); Shrubs, Hedges, Green Walls and Roofs, Plants, Animals and Water.
- T9 – Tree Benefits
- T10 – Wider Environmental Considerations (including Climate Change, Air quality and Water)

## Community Framework

- C1 – Governance and Leadership
- C2 – Belfast Council Departmental Co-operation
- C3 - Utilities Co-operation
- C4 – Green industry Co-operation
- C5 – Involvement of large private and institutional landholders
- C6 – Community Involvement and Neighbourhood Action
- C7 – General appreciation of trees as a community resource
- C8 – Regional collaboration
- C9 – International Reputation

## Sustainable Resource Management Approach

- R1 – Tree and Woodlands Inventory
- R2 – Tree valuation and asset management approach
- R3 – Canopy cover assessment and goals
- R4 – Tree Equity (links to C6)
- R5 – Reviewing and improving the Tree Strategy
- R6 – Urban forestry funding
- R7 – Urban forestry program capacity and Staffing
- R8 – Tree establishment planning and implementation
- R9 – Growing site suitability
- R10 – Tree protection policy development and enforcement
- R11 – Maintenance of publicly owned trees
- R12 – Management of publicly owned natural areas
- R13 – Tree risk management
- R14 – Biosecurity
- R15 – Urban wood and green waste utilisation
- R16 – Native vegetation
- R17 – Research and Development
- R18 – Open Urban Forest data and Web-map







**Belfast  
City Council**

# **Tree Establishment Strategy**

**Including Tree Planting  
Opportunity Mapping in Soft  
and Hard Landscapes**





## Trees and Urban Forest Structure

- T1 – Relative tree canopy cover
- T2 – Size (Age) diversity
- T3 – Species diversity
- T4 – Species suitability (including allergenicity and ESD's)
- T5 – Publicly owned trees (trees managed "intensively")
- T6 – Publicly owned woodlands and natural areas (trees managed "extensively")
- T7 – Trees on private property
- T8 – Other Elements of the UF (including Biodiversity); Shrubs, Hedges, Green Walls and Roofs, Plants, Animals and Water.
- T9 – Tree Benefits
- T10 – Wider Environmental Considerations (including Climate Change, Air quality and Water)

## Sustainable Resource Management Approach

- R1 – Tree and Woodlands Inventory
- R2 – Tree valuation and asset management approach
- R3 – Canopy cover assessment and goals
- R4 – Tree Equity (links to C6)
- R5 – Reviewing and improving the Tree Strategy
- R6 – Urban forestry funding
- R7 – Urban forestry program capacity and Staffing
- R8 – Tree establishment planning and implementation
- R9 – Growing site suitability
- R10 – Tree protection policy development and enforcement
- R11 – Maintenance of publicly owned trees
- R12 – Management of publicly owned natural areas
- R13 – Tree risk management
- R14 – Biosecurity
- R15 – Urban wood and green waste utilisation
- R16 – Native vegetation
- R17 – Research and Development
- R18 – Open Urban Forest data and Web-map

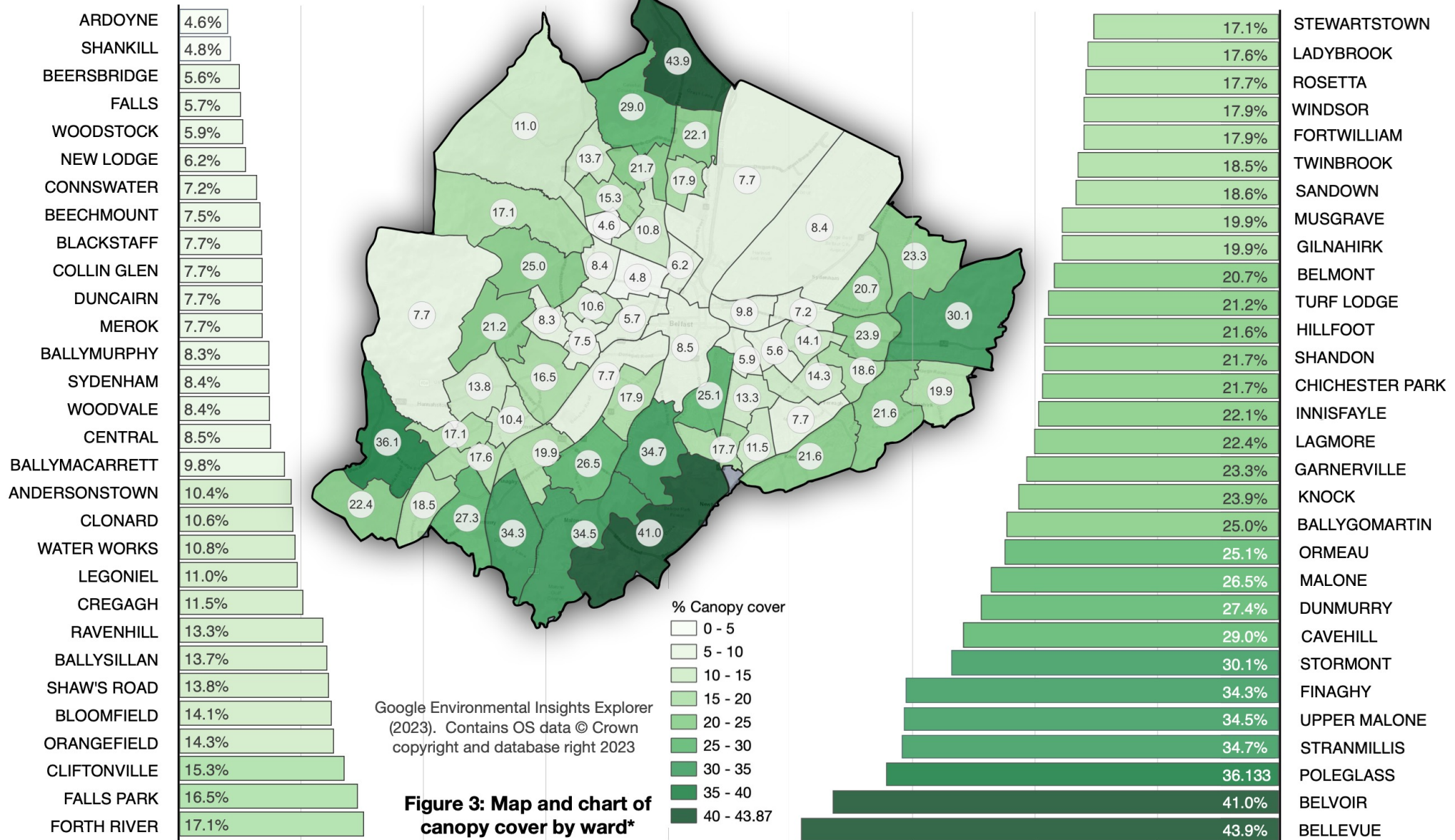
Tree Strategy Target	Initial Performance Level	How the Planting Strategy Links	Performance Level After Action Taken	More Information In This Report
T1 Relative tree canopy cover	Moderate	The high resolution canopy study sets a starting point for canopy targets which is more repeatable than the i-Tree Eco Sample study	Good/Optimal	Pg 8, 9, 10
T2 Size (Age) diversity	Moderate	Reiterates findings from the i-Tree Eco report and suggests planting and management actions	Moderate/Good	Pg 13
T3 Species diversity	Low/Moderate	Reiterates findings from the i-Tree Eco report and investigates diversity, suitability, and future steps	Moderate/Good	Pg 11

Strong linkages from Tree Establishment Strategy back to Belfast Tree Strategy





# R3 Canopy Cover Assessment and Goals





# T3 Species diversity – Street trees vs All trees

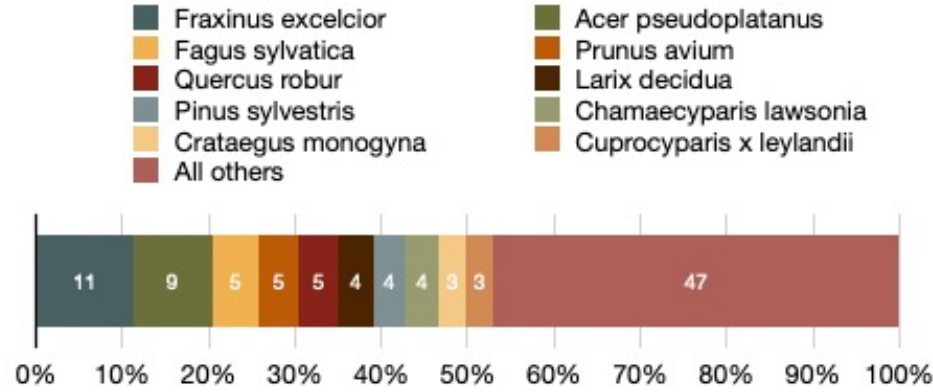


Figure 4: Overall species population distribution across the whole of Belfast

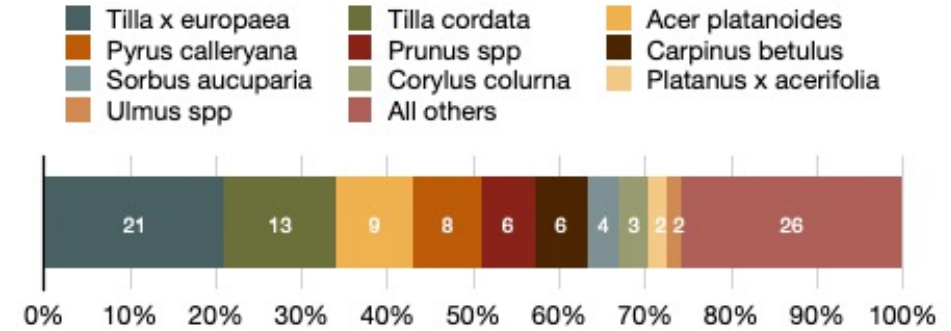
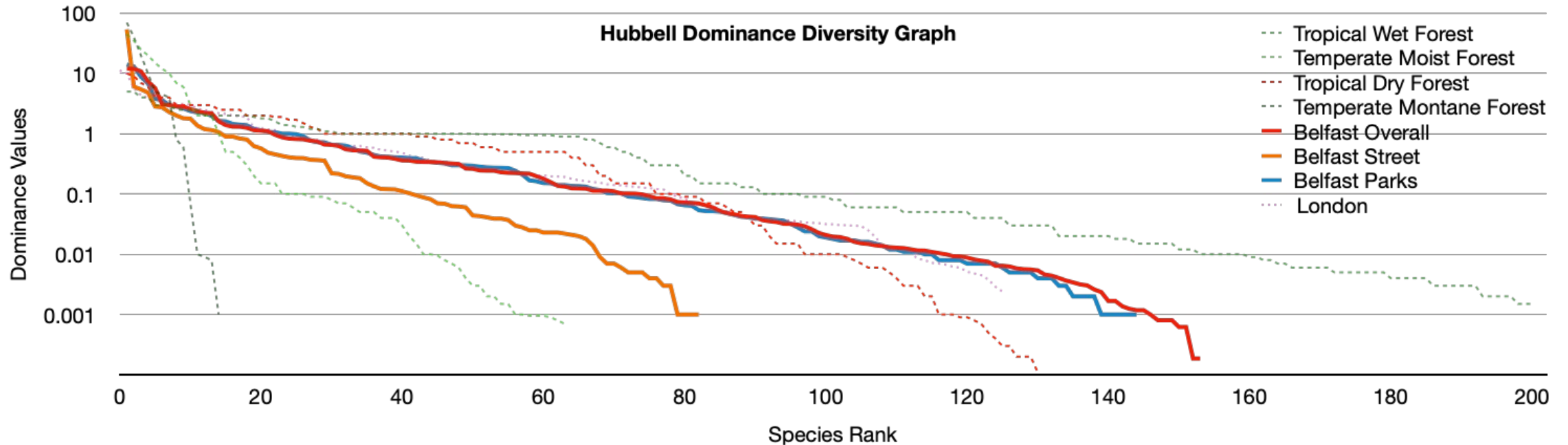
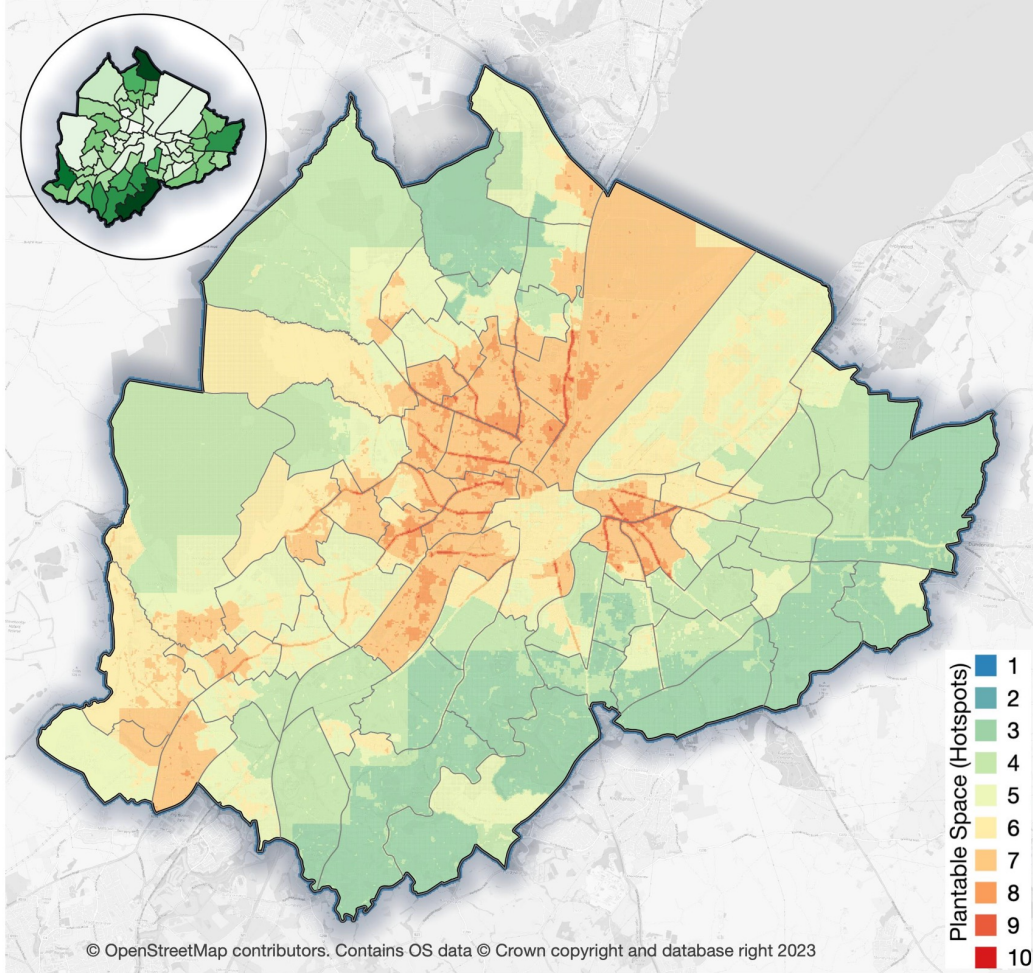
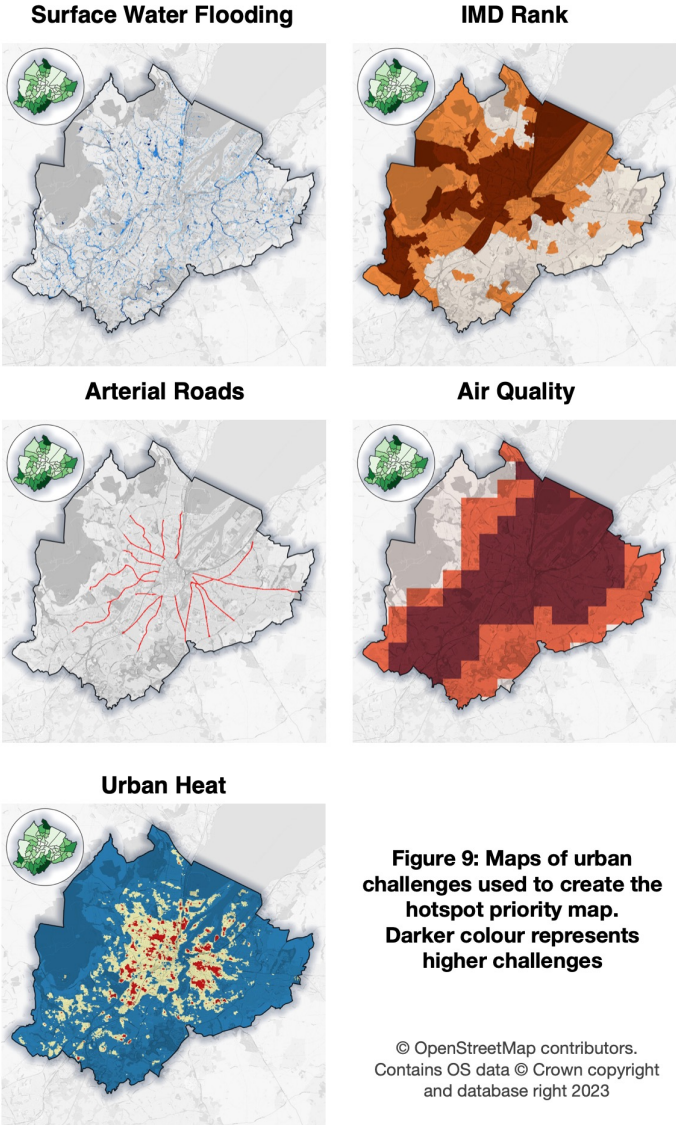


Figure 5: Species population distribution of Belfast's street trees





# R8 Tree establishment planning & implementation



**Figure 10: Hotspot map of Belfast ranking land parcels by priority for tree planting.**

Prioritisation against local needs (Tree Equity)



## 7.2 Ward Summary of Key Statistics

Ward	Standard Priority						High Priority				Total Plantable Space		Current Canopy Cover		Potential Canopy Cover		Tree numbers required*			
	1	2	3	4	5	6	7	8	9	10	Ha	%	Ha	%	Ha	%	Ha	%	Total	High priority
Duncairn	<0.1						0.1%				10.6	99.9%	10.6	0%	74.2	0.1%	84.8	0.1%	23,873	23,850
Ballymacarrett	1.7						21.50%				6.2	78.50%	7.9	7.90%	9.7	0.1%	17.5	17.70%	17,663	13,860

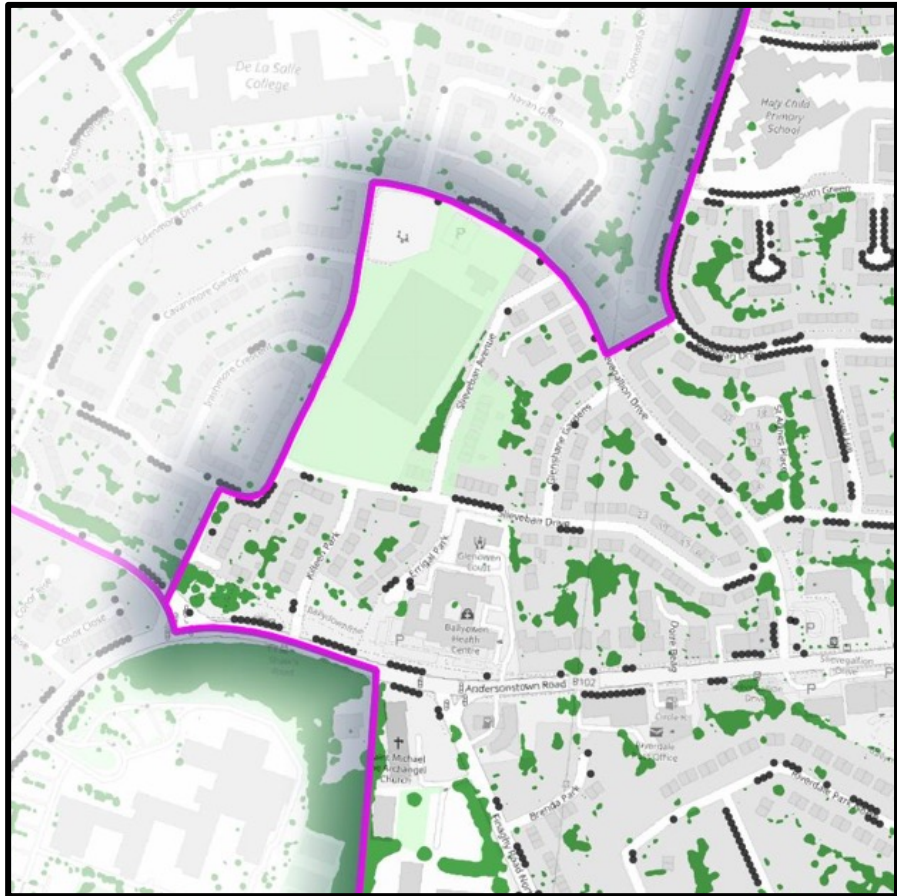
## 8.2 Ward Summary of Key Statistics

Ward	Standard Priority Locations						High Priority Locations				Total Plantable Locations	% of locations considered high priority
	1	2	3	4	5	6	7	8	9	10		
Duncairn	93						5,277				5,370	98.3%
Blackstaff	461						2,634				3,095	85.1%

Tree planting opportunities shown at ward level to facilitate decision making and resource allocation



Supported by detailed ward maps showing existing canopy and planting opportunities in both soft and hard landscapes

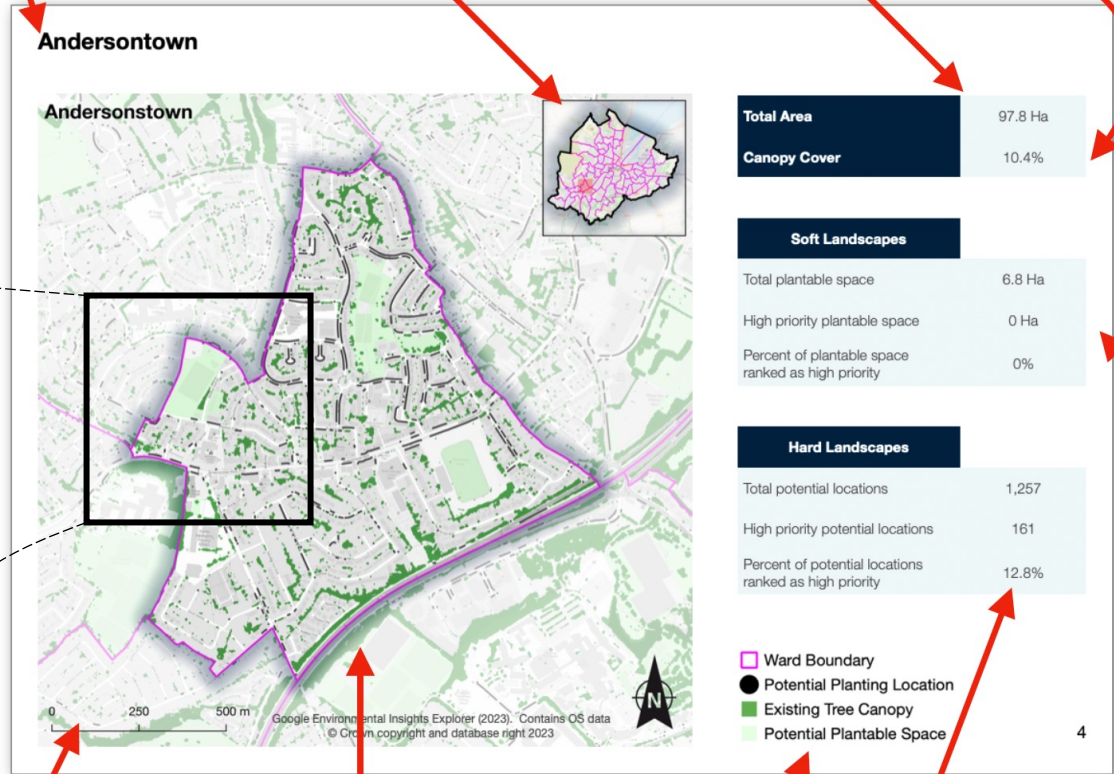


Ward name - This document is sorted alphabetically by ward

Ward location within Belfast

Total area of the ward given in hectares

Percentage canopy cover for the ward.



Scale bar - Scales may vary from ward to ward.

Ward map showing:  
 • existing tree canopy cover  
 • potential plantable space in soft landscapes  
 • potential planting locations in hard landscapes

Map legend

Soft landscape plantable space summary values

Hard landscape potential locations summary values



