



Subsidence 2022/23

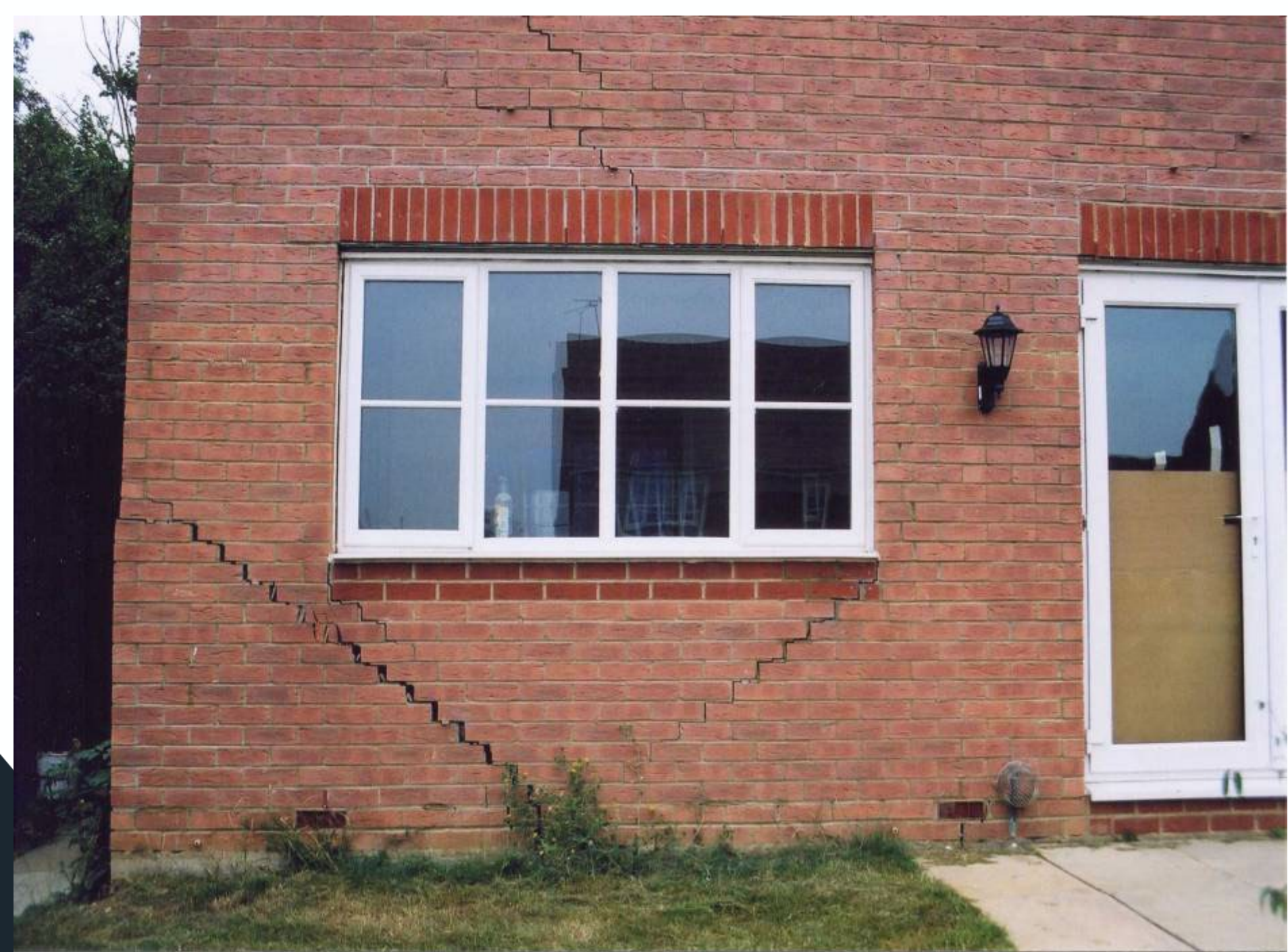
Printing, reproducing and distributing any of the materials contained within this presentation without the written permission of LABC is strictly prohibited.

© Copyright LABC 2020. All rights reserved.



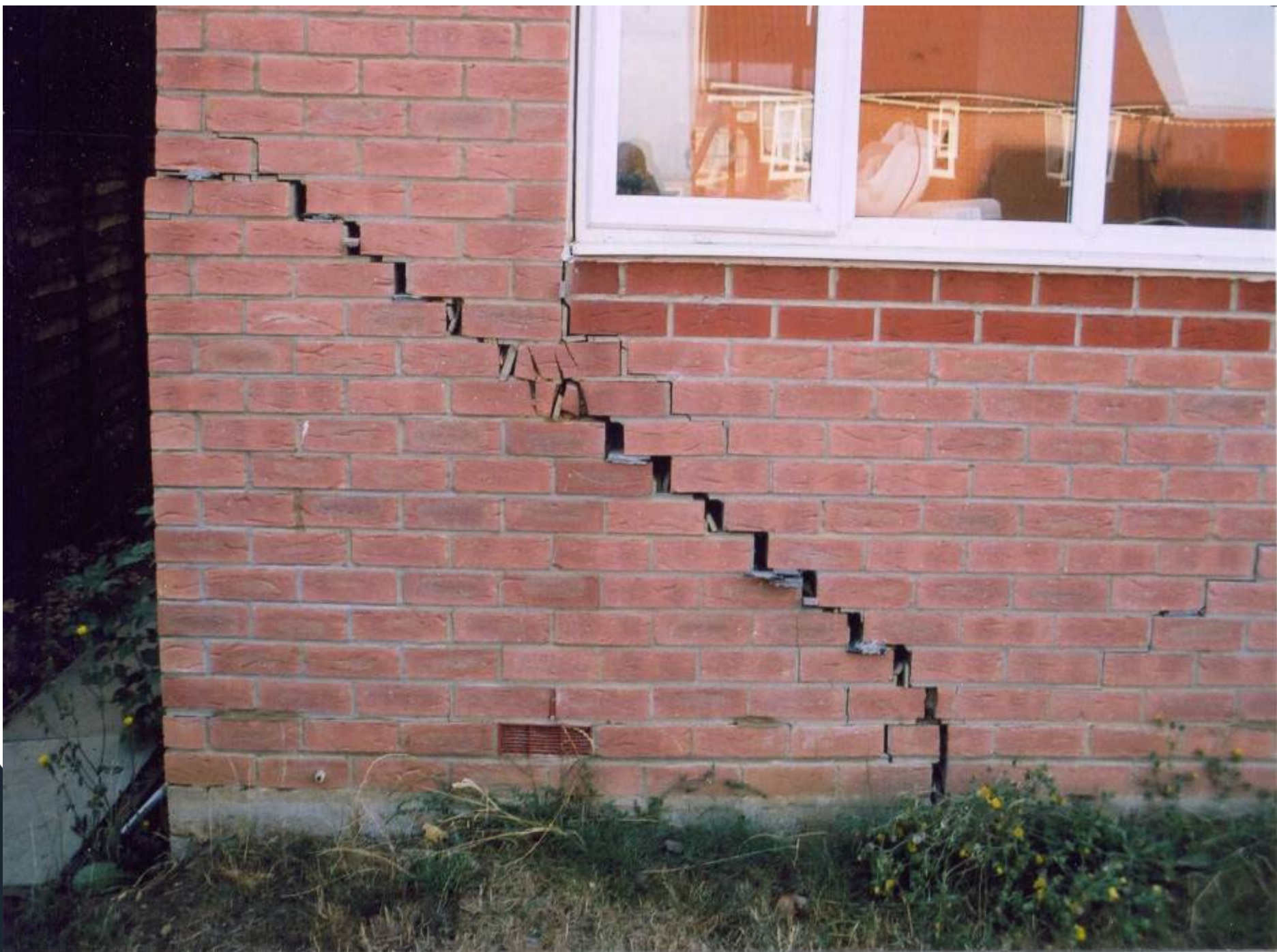


ROGER BULLIVANT



Tree close to structure







ROGER BULLIVANT



ensure all foundations
are adequate





ROGER BULLIVANT

© Copyright LABC 2020. All rights reserved.



ROGER BULLIVANT

© Copyright LABC 2020. All rights reserved.

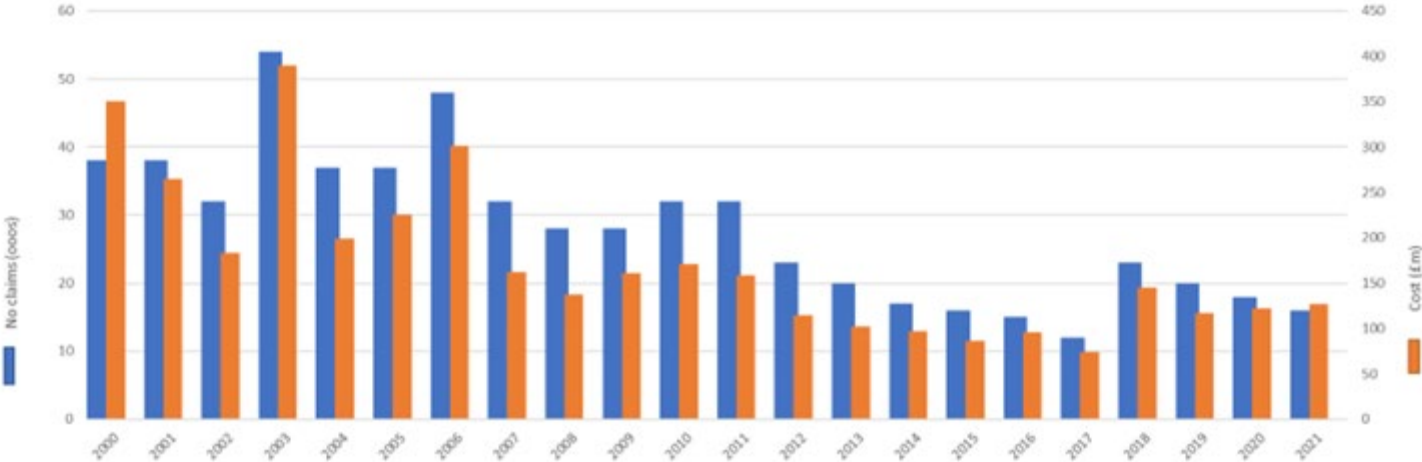


Information available now

Printing, reproducing and distributing any of the materials contained within this presentation without the written permission of LABC is strictly prohibited.

© Copyright LABC 2020. All rights reserved.

Claims 2000 - 2021



MORECS

Metrological Office Rainfall and Evaporation Calculation System.....

- Daily hours of sunshine
- Air temperature
- Vapour pressure
- Wind speed
- Rainfall



2022

Europe – 2022 was the hottest on record!

UK – Driest July since 1935!

Last proper surge event 2018

Before that, 2003



What happened in 2018

- 23000 claims
- Value £145m
- LV reported a 205% jump from June 22 to July 22
- Most Insurance companies reported factor of 5 increase
- Most loss adjusters reported 300 – 400% increase
- Repudiations – 35%



What's happening now.....

- Clay and trees (Existing and New developments)
- Leaking drains (drain testing++)
- Flood susceptibility (prolonged and deluge)
- Storm water attenuation (Groundwater fluctuation)
- Mining (Tin, Lithium, China clay)
- Ground source heat pumps





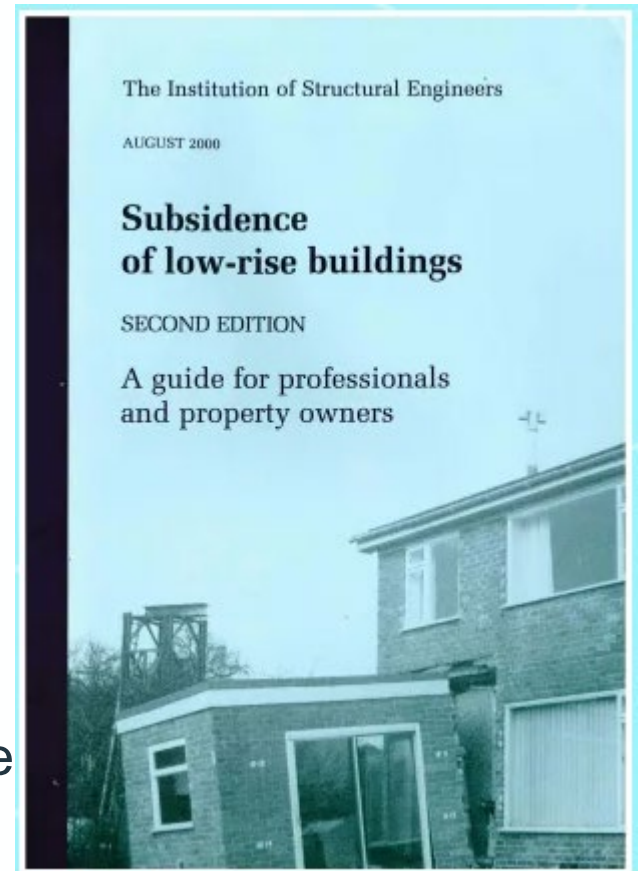
Useful publications

Printing, reproducing and distributing any of the materials contained within this presentation without the written permission of LABC is strictly prohibited.

© Copyright LABC 2020. All rights reserved.

IStructE “Subsidence”

- Panel of experts (JP Chair)
- Complete review of Edition 2 (2000)
- All chapters wholly or partially rewritten
- Additional diagnostic information where re
- Alternative rectification processes
- More direct guidance
- Further research proposals



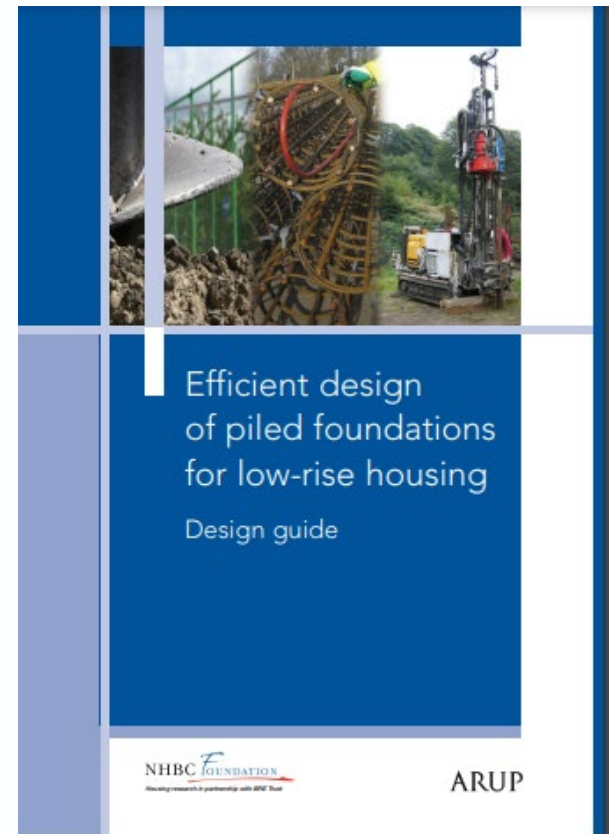
NHBC NF93

- Impact of climate change on buildings
- Implications for the design and construction
- The Climate Emergency
- Extreme weather
- Higher intensity storms
- Higher temperatures
- Increased flooding and sea-level rise
 - Shrink/swell
 - Washout
 - Reduction of soil strength with increase in pore water pressure
 - Dissolution/Mining
 - Collapse settlements
 - Corrosion of Foundations due to salt water

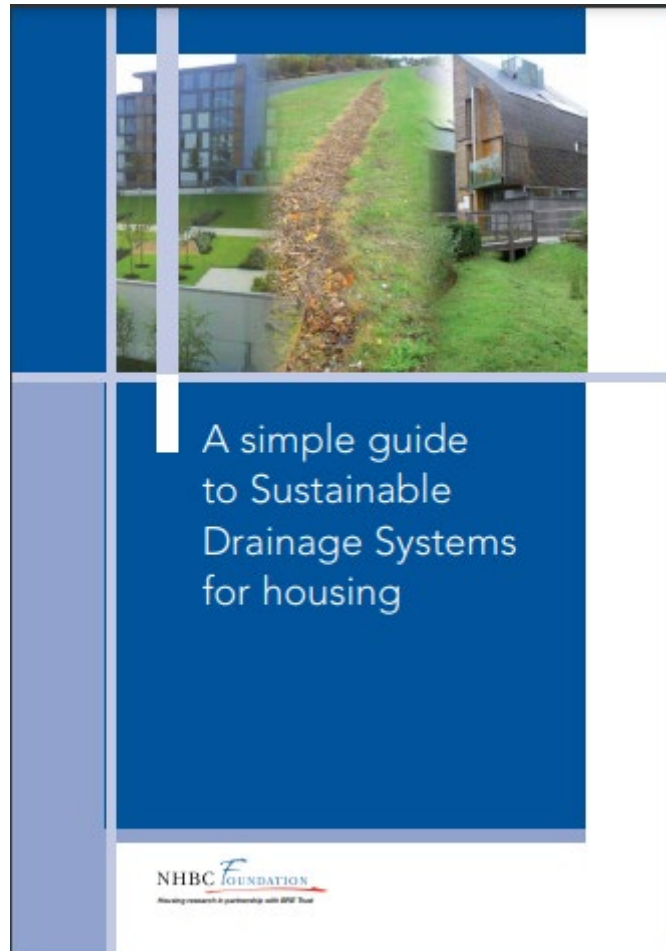


Alternative Foundations

- Design guide for low-rise buildings
- Performance of low-rise foundations
- Choice of foundations
- Site investigation
- Pile design and construction
- Environmental impact of foundation solutions
- Acceptable foundation movements



Drainage



Carbon in new-build houses

- Embodied CO2
- Operational CO2
- Life cycle assessments
- Two built forms (detached and mid-terrace)
- Two construction weights (masonry and timber)
- Two dwelling lifespans (60 and 120 years)
- Foundations and ground floors circa 30%



WATCHET



'Unstable' cliff-top development vetoed

A major cliff-top housing development in Somerset has been refused planning permission because it is on land known to be geologically unstable.

The proposal for up to 136 houses and the rerouting of a coastal road on Cleeve Hill in Watchet was rejected at a Somerset West & Taunton Council meeting on 5 January.

The council had previously refused a planning application for a development on the site in 2020.

It was concerned that the development would contribute to slope instability and subsidence.

The land around Cleeve Hill overlies a geologically soft and

heavily faulted subsurface, making it more prone to coastal erosion and landslides in recent decades.

On 12 January, the coastal road was closed to all road users after a geotechnical survey, combined with expert advice, indicated significant movement within the coastal slope next to the road.

Last April, subsidence in a section of the cliff-top was also reported to Watchet Town Council.

At its meeting on 5 January Somerset & West Taunton council concluded that the development falls "in close proximity to land known to be, or which may be, unstable" and therefore was unsuitable.





Subsidence Repair

Printing, reproducing and distributing any of the materials contained within this presentation without the written permission of LABC is strictly prohibited.

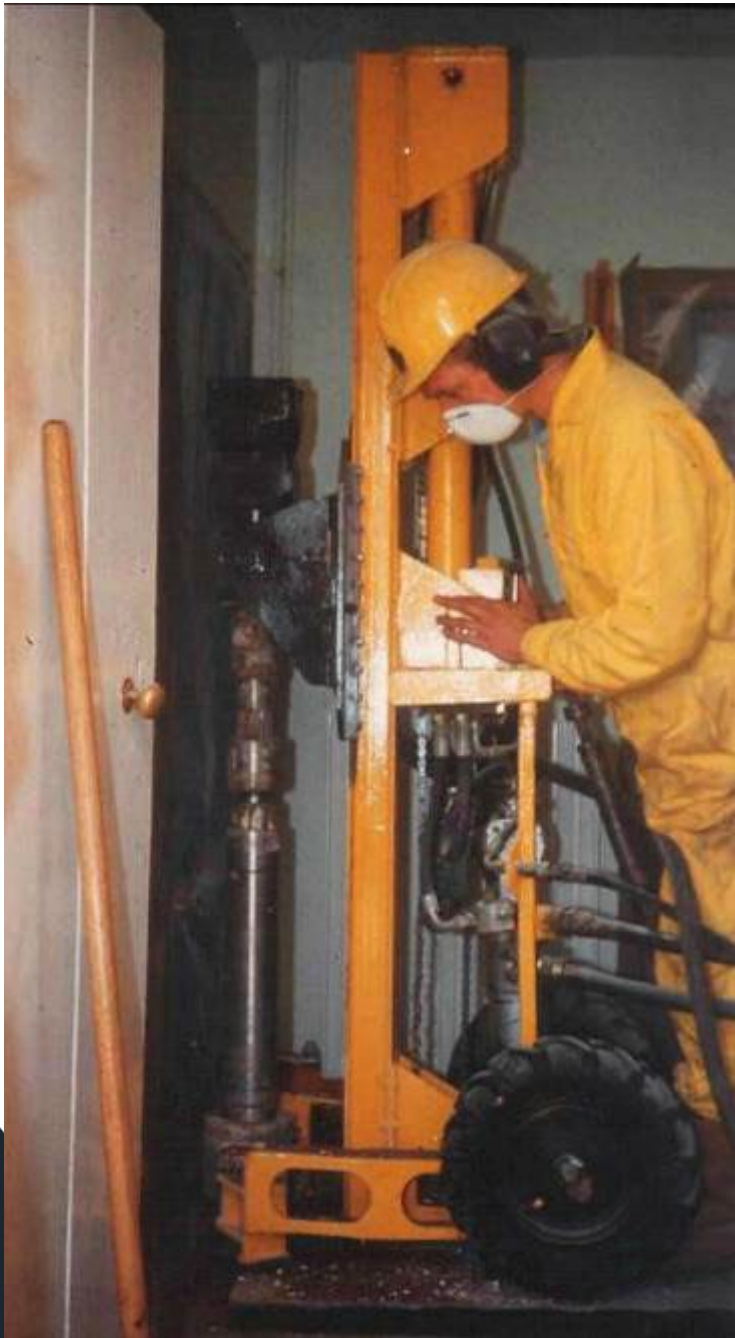
© Copyright LABC 2020. All rights reserved.

The key elements of Underpinning Design and Construction are.....

- a) Safety**
- b) Permanent and Temporary works**
- c) Site Investigation**
- d) Condition assessment**
- e) Environment and Sustainability**
- f) Cost**

- Safety – design and construction needs to comply with CDM 15, specifically Regulation 22 – Excavations.
- Co-ordination of the Temporary and Permanent works is vital for safe construction and a viable outcome.
- Ground condition knowledge is crucial.
- The condition of the existing building or structure must be determined as, in the temporary condition the structure is likely to be additionally stressed.
- The environmental impact must be assessed as should sustainability.
- Cost including contingencies must be accurately determined to ensure viability.





ROGER BULLIVANT

© Copyright LABC 2020. All rights reserved.



HYDRAULIC DROP-HAMMER



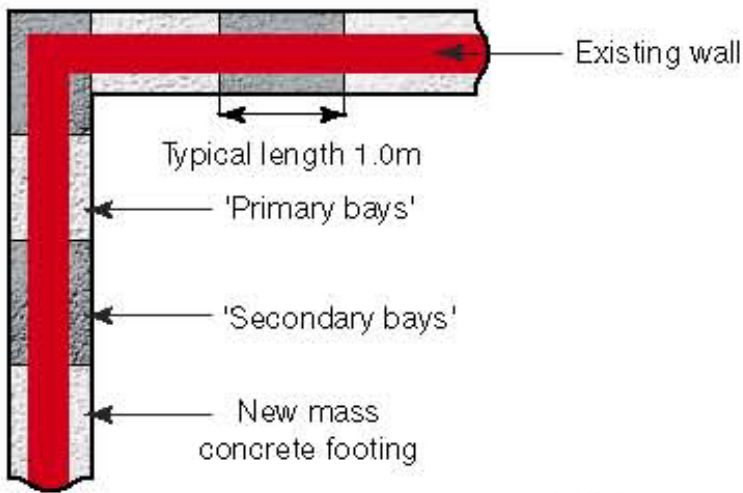
ROGER BULLIVANT



UNDERPINNING SYSTEMS

Printing, reproducing and distributing any of the materials contained within this presentation without the written permission of LABC is strictly prohibited.

© Copyright LABC 2020. All rights reserved.



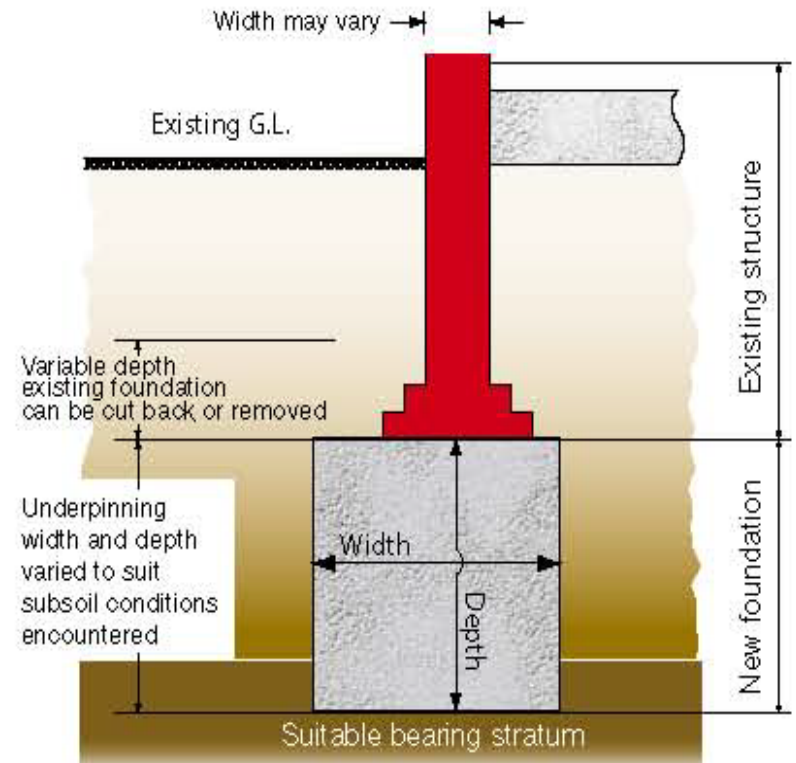
Plan of foundation

U1a



Preparation to a corner section of a basement

TRADITIONAL SUPPORT SYSTEM



Section through foundation

Shear key to be formed between bays
Can be adapted to suit heave conditions



ROGER BULLIVANT



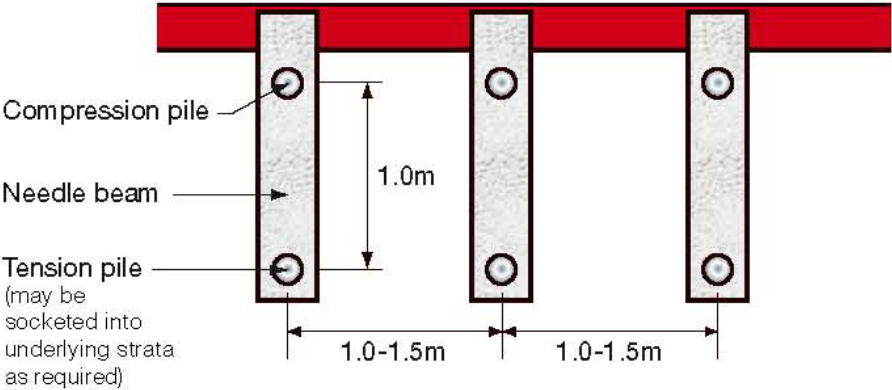
LABC

© Copyright LABC 2020. All rights reserved.

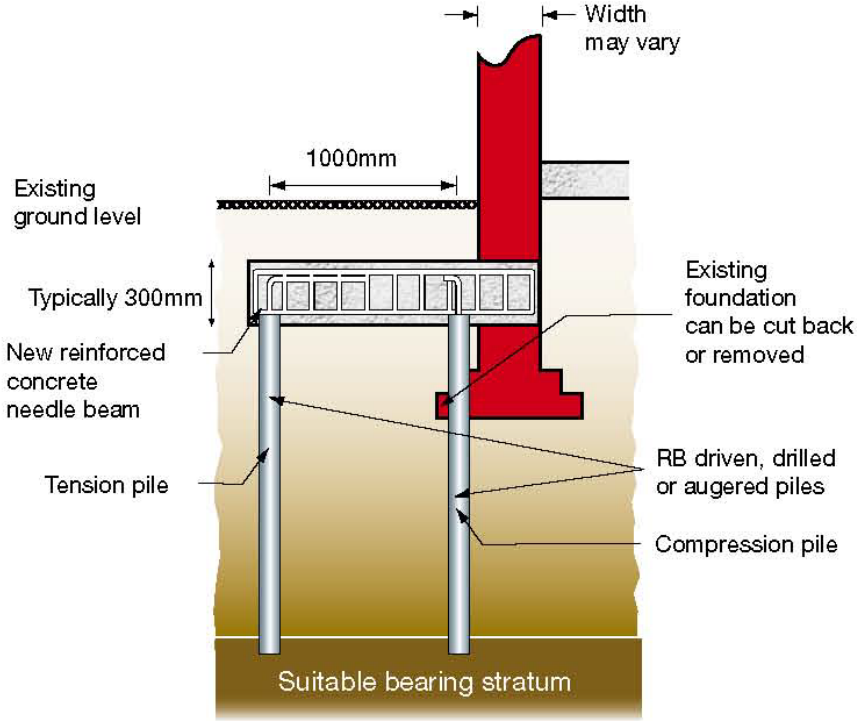
CANTILEVER BEAM SUPPORT SYSTEMS



Piles completed - Beam steel reinforcement positioned



U3a Plan of foundation



U3b Section through foundation



ROGER BULLIVANT

CANTILEVER BEAM SUPPORT SYSTEMS

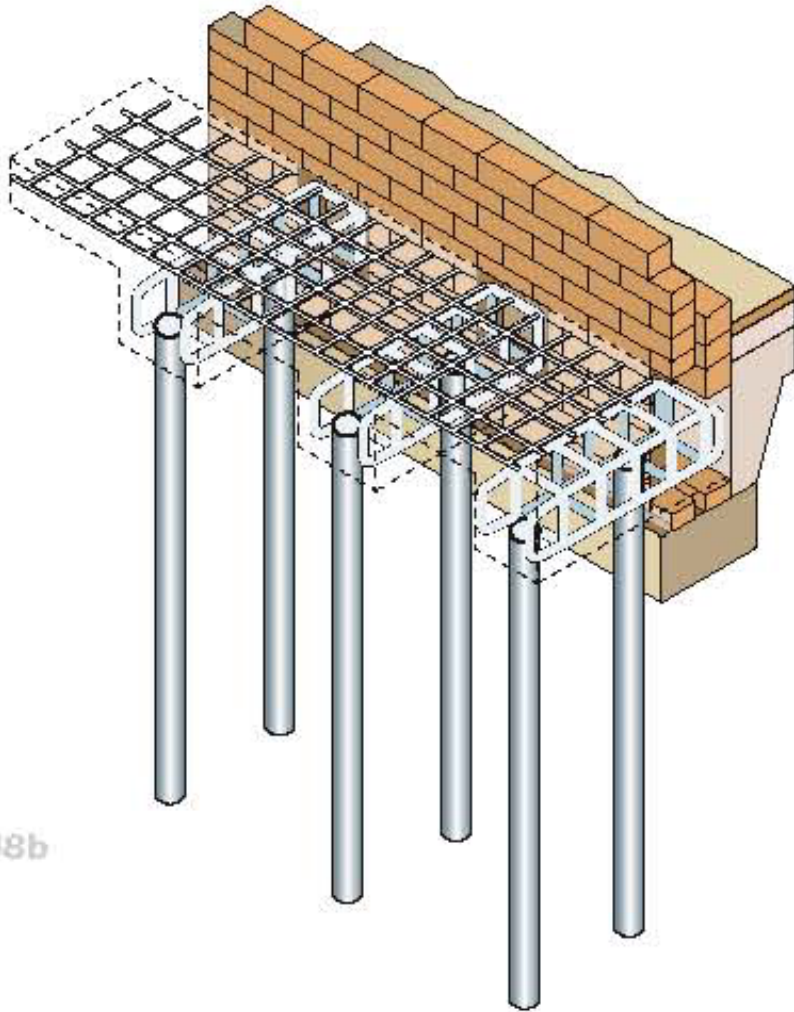


CANTILEVER BEAM SUPPORT SYSTEMS



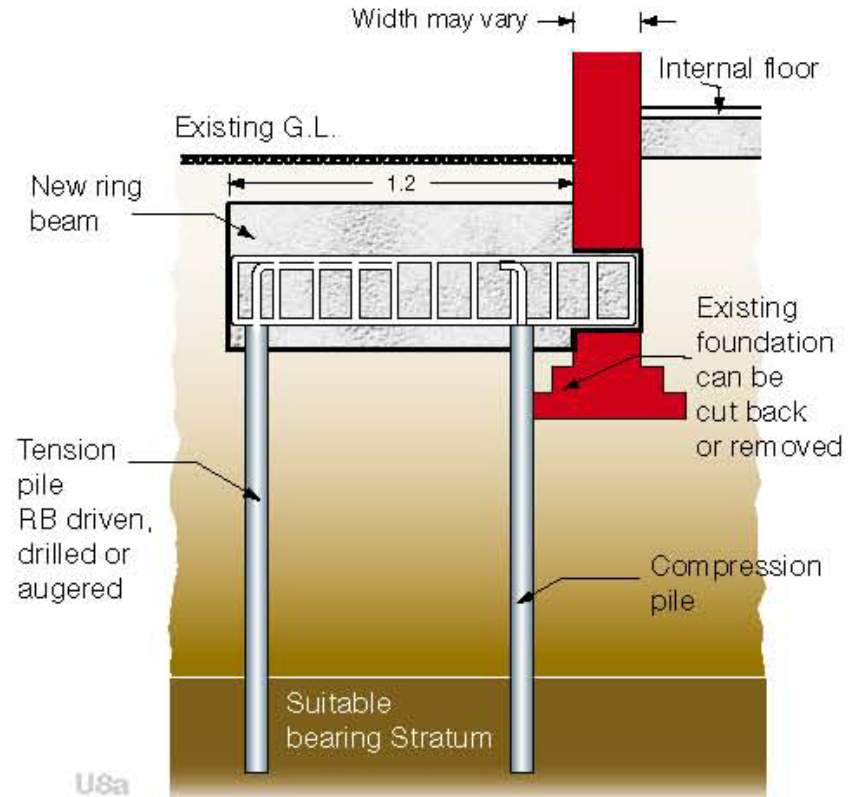
LABC

CANTILEVER BEAM SUPPORT SYSTEMS



U8b

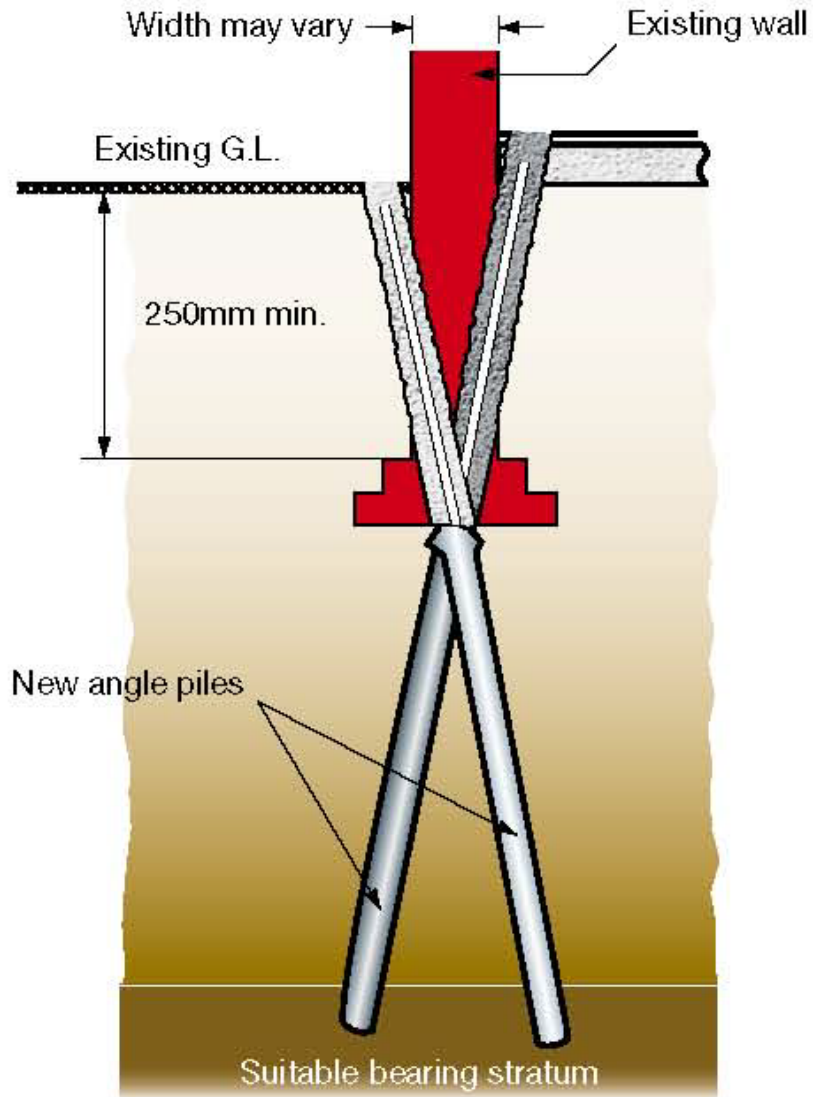
For more heavily loaded walls the needle beams may be structural steel sections.



U8a

Section through foundation

ANGLE PILE SUPPORT SYSTEM



Section through foundation



External Angle Piles - Ready for driving (Inset - External Angle Piles - Being driven to suitable bearing stratum)

HEAVE SUPPORT SYSTEM

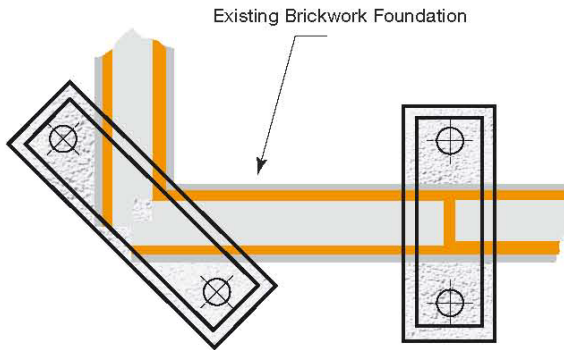


Fig 1 - Part plan of foundation at lintel level

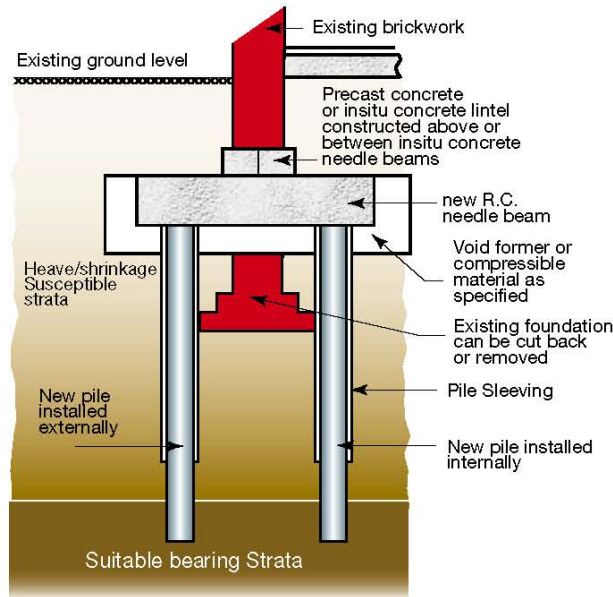


Fig 2 - Section through foundation

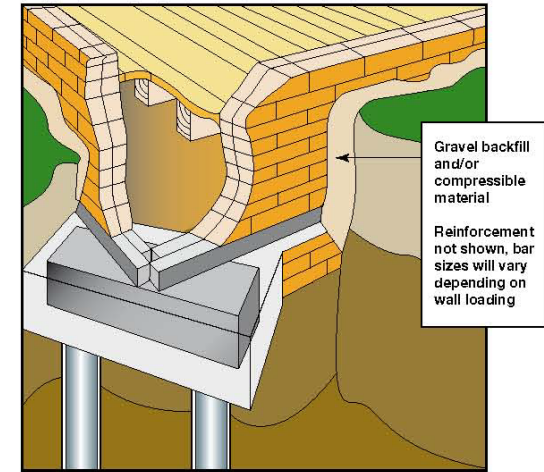


Fig 3 - View of foundation at a typical corner detail

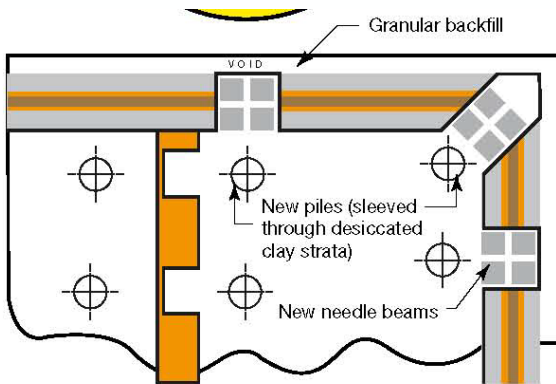


Fig 4 - Part plan of foundation at lintel level

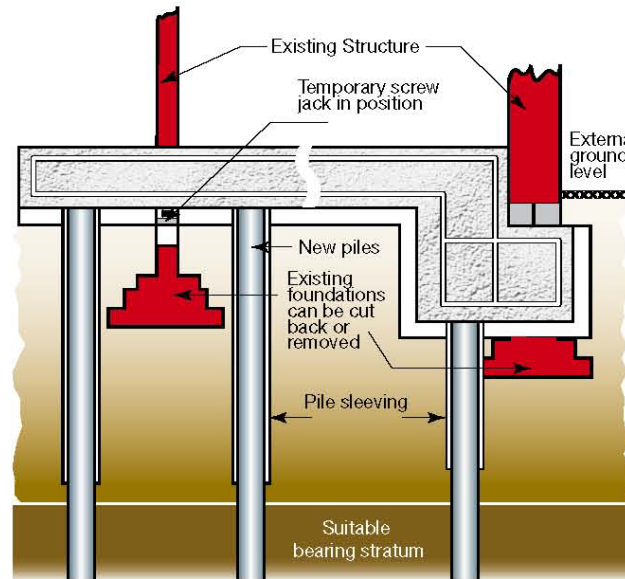


Fig 5 - Section through foundation

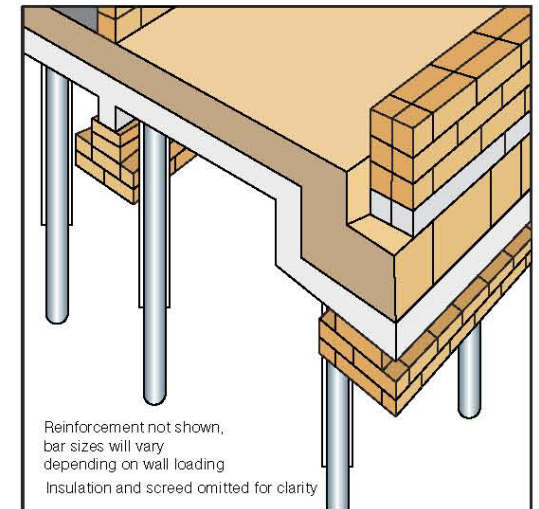
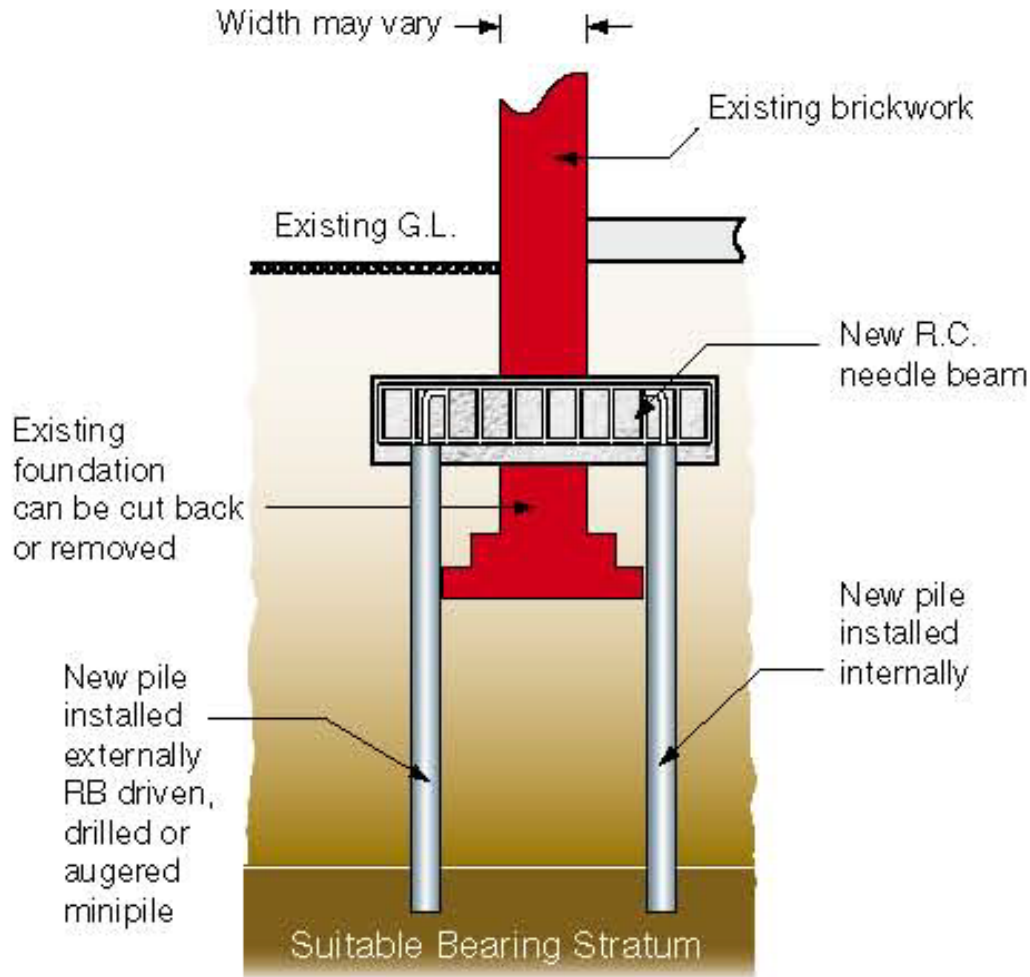


Fig 6 - View of foundation - external backfill removed for clarity - use gravel or compressible material

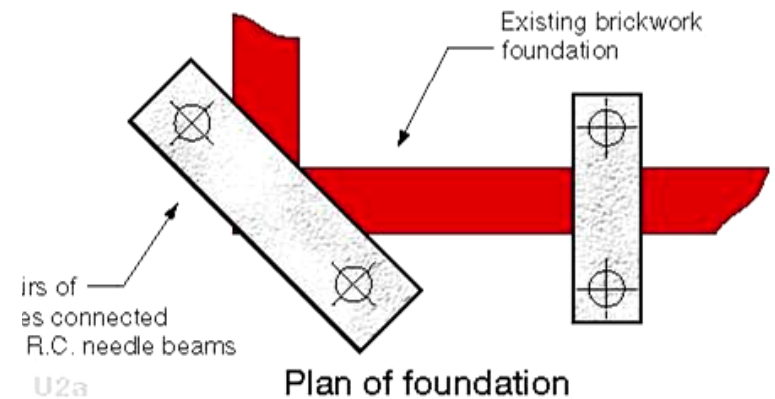


ROGER BULLIVANT

PILE & BEAM SUPPORT SYSTEM



Section through foundation



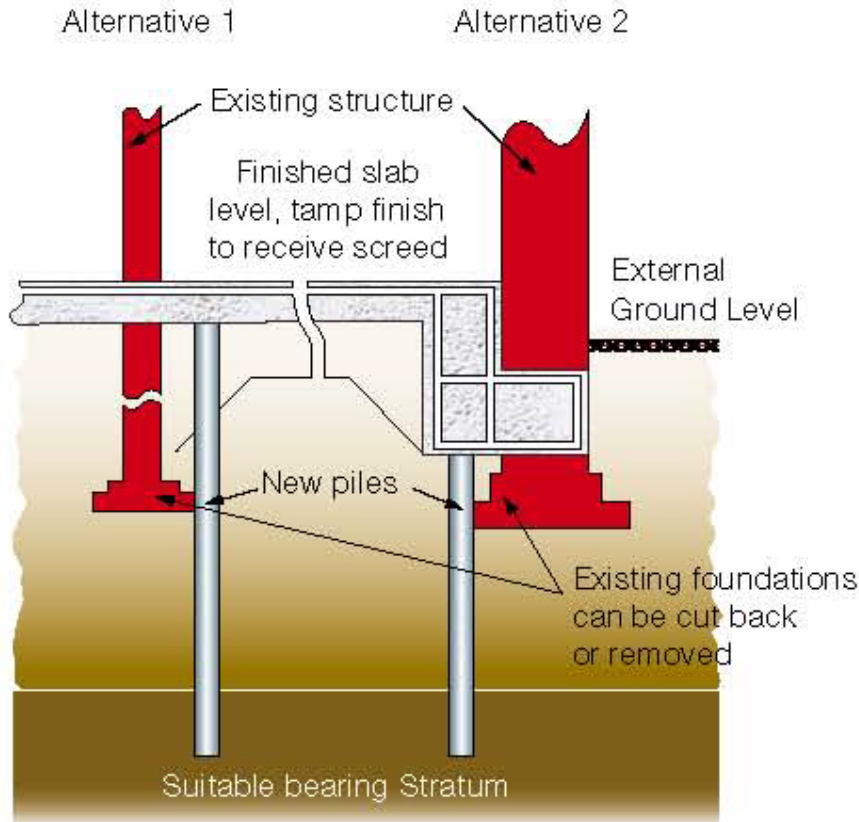
U2b

U2a



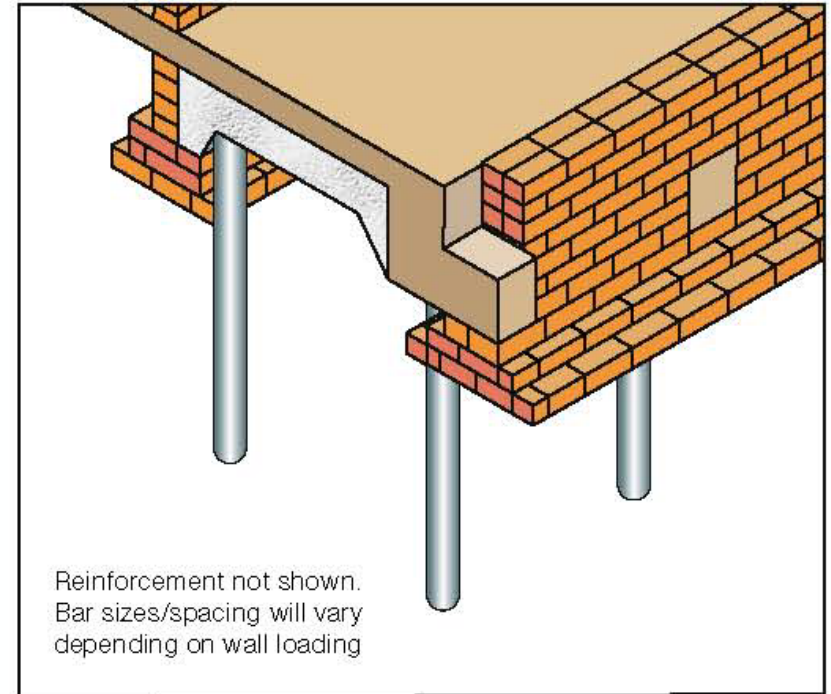
ROGER BULLIVANT

PILE & RAFT SUPPORT SYSTEM



U5a

Section through foundation



U5b

View of piles and raft



ROGER BULLIVANT







Association of Specialist Underpinning Contractors

