

# All Layers

Reset Layers

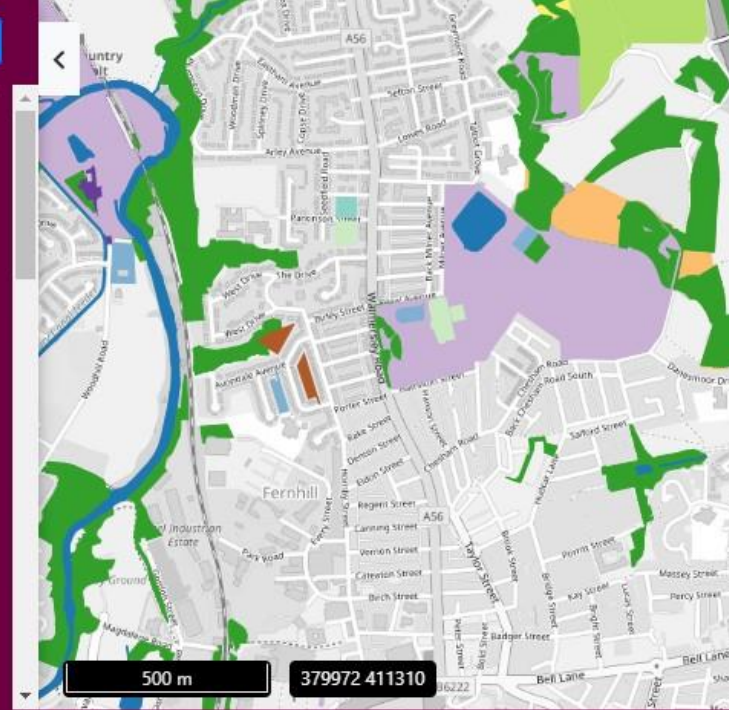
## Green and Blue Infrastructure

All Green and Blue Infrastructure

Opacity

### Typology

- Public Park - General
- Public Park - Country Park
- Millennium or Doorstep Green
- Local Nature Reserve
- National Nature Reserve
- Playing Fields
- Other Sports Facilities
- Access Land (CRoW)
- Woodland
- Water Courses and Surface Water Features
- Allotments and Community Growing Spaces
- Activity Spaces Provision
- Cemeteries and Religious Grounds
- Golf Courses



NATURAL ENGLAND

© Natural England 2021, reproduced with the permission of Natural England.

Contains, or is derived from, information supplied by Ordnance Survey. © Crown copyright and database rights 2021. Ordnance Survey 100022021.

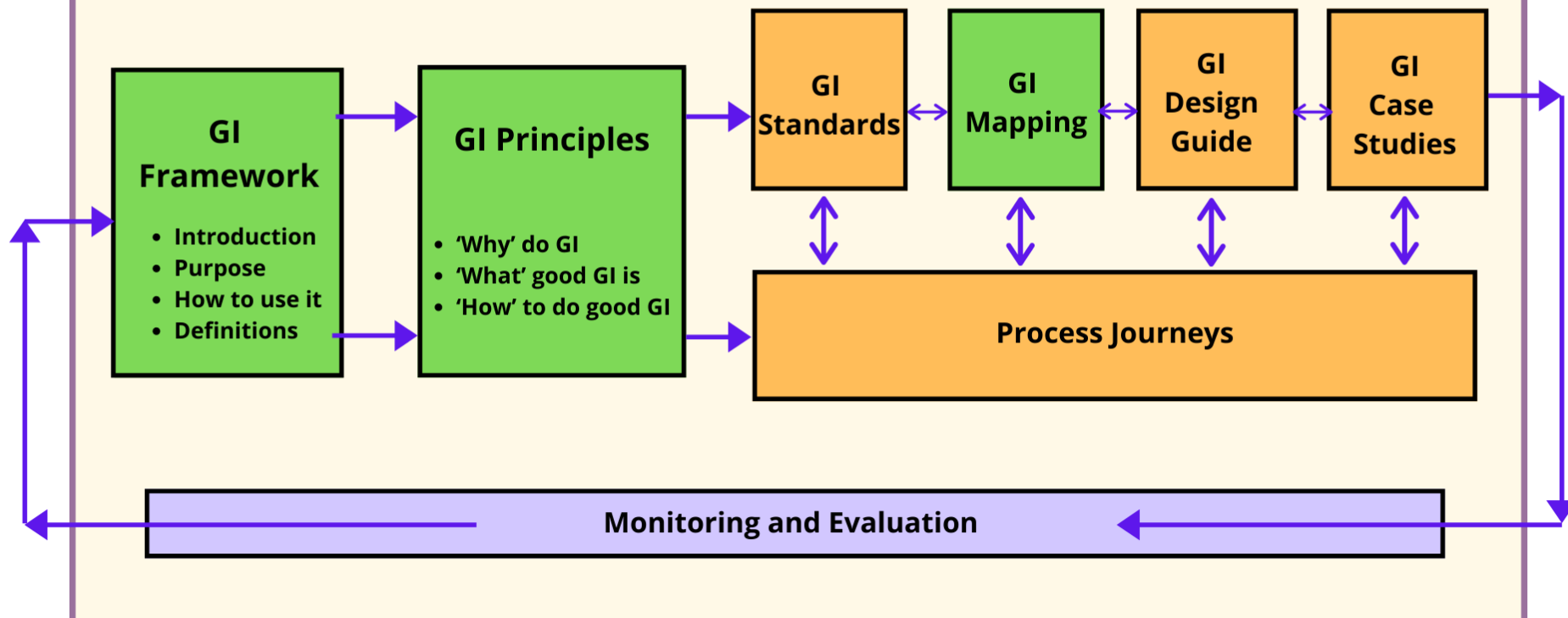
## England Baseline Green Infrastructure Mapping Database – the tree problem!

Martin Moss, Senior Adviser Green Infrastructure  
Natural England

The GI Mapping is an element of the developing resources to support the development of the England GI Standards Framework.

## Green Infrastructure Framework - Principles and Standards for England

Principles - The Golden Thread



This not just a set of maps, it's also about long term monitoring.

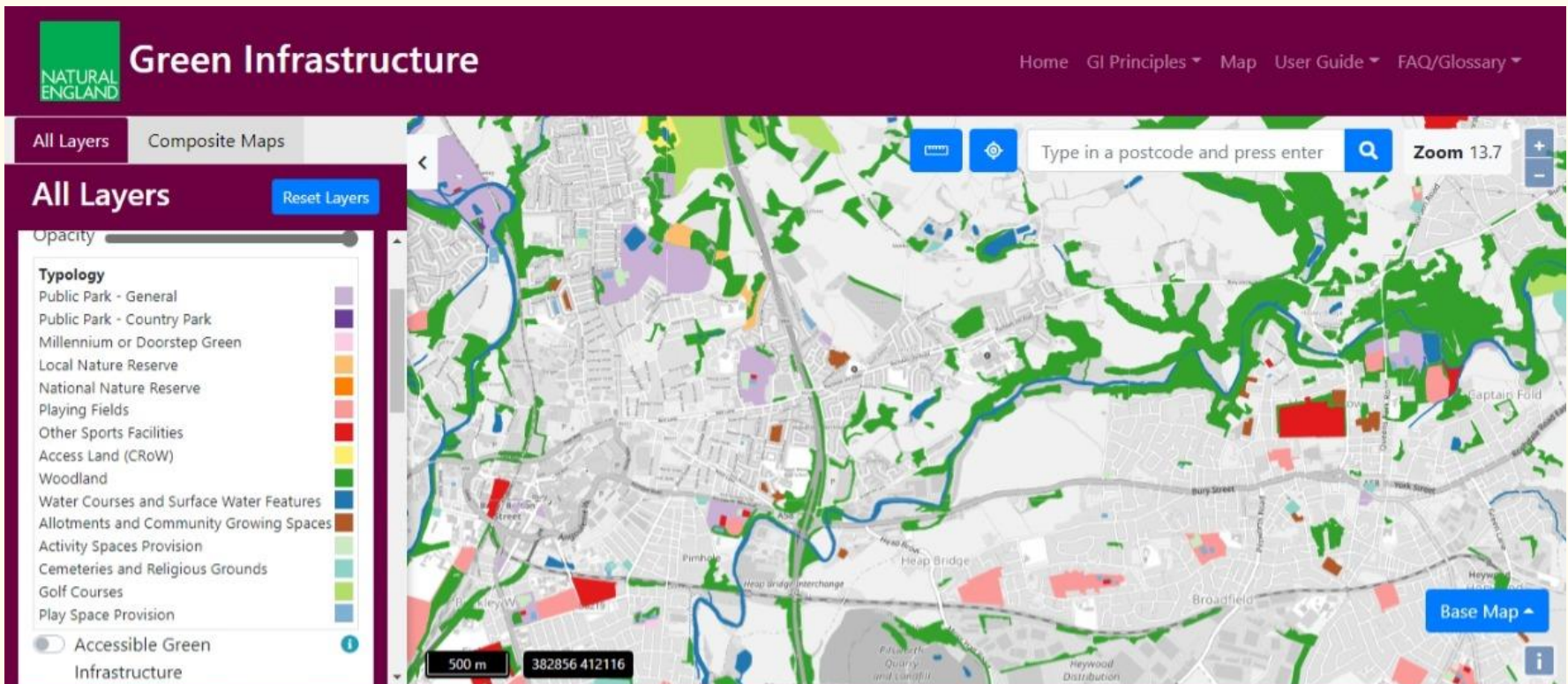


- **It's all about change.**
- Green Infrastructure is not static. It changes over time. Aiming to be able to do a rolling programme of Quintennial Change Detection Reports. First one due 2025.
- We need to understand;
  - How it is changing – typological change.
  - Where it is changing – location and distribution.
  - How that affects people – supply, demand, inequalities, performance and quality.
- Two key contexts to understanding change.
- **Change in the Green Infrastructure – supply, distribution, quality – it's performance as socio-environmental infrastructure – it's there to do a job. Is it doing it?.**
- **Change in the underpinning urban ecosystem – habitat composition, condition and species diversity. A healthy urban GI needs a healthy urban ecosystem to work properly.**

# Current situation with V 1.1 - Woods but no trees.

Current mapping includes woodlands – derived from;

- OS Open Woods.
- National Forest Inventory.
- Ancient Woodland Inventory.



## The problem with tree data.



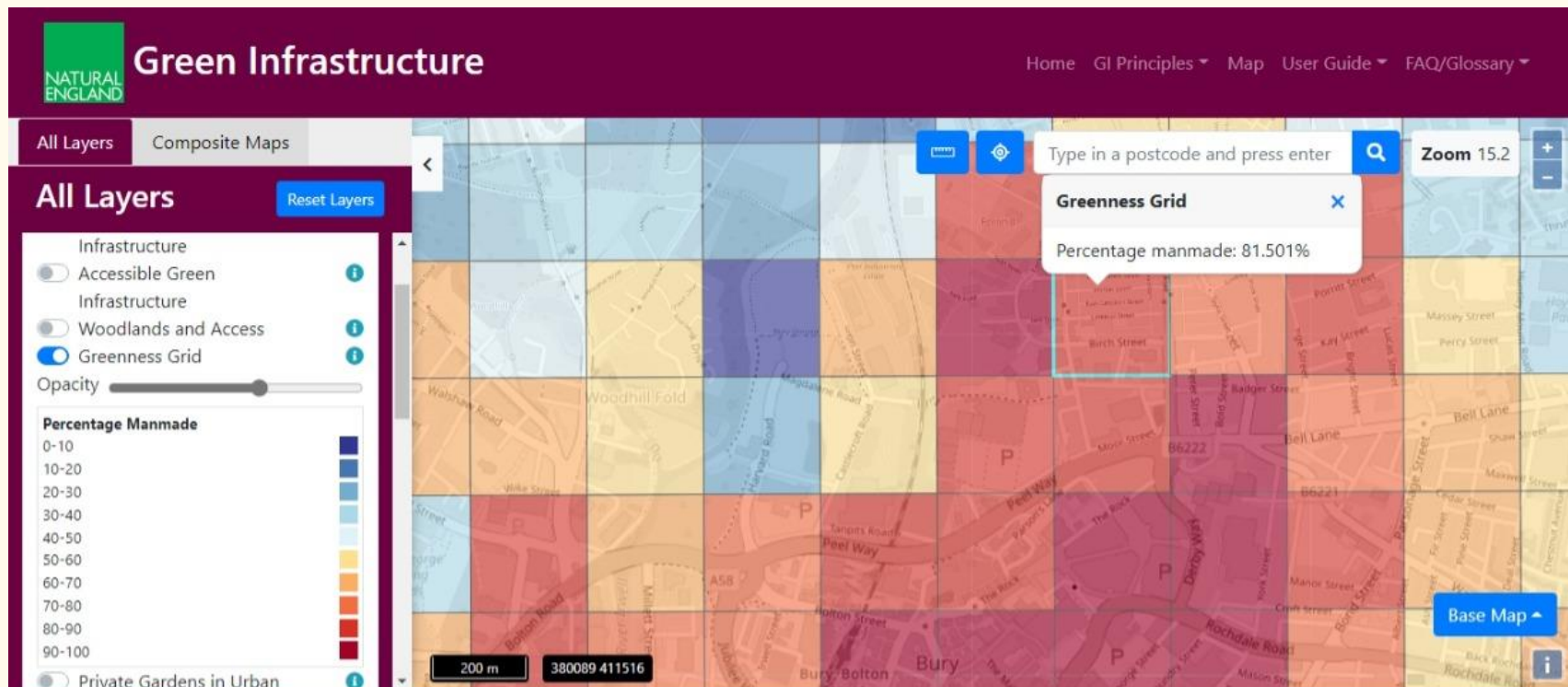
- The Green Infrastructure Mapping Data Needs;
- England coverage.
- Consistency in collation (so that it can be amalgamated / added up).
- Periodic update.
- OGL compatibility (or capable of supporting a useable Derived Product).
- And the problem –
- Best available data is commercial – cost and licence issues.
- Other data (England level) is in development but not quite there to use right now.
- The GI has some specific mapping needs – trees in the urban environment (as opposed to woods – below 0.5 ha).
- Preferably open data (or an OGL product that is detailed enough).

# What would we do with tree data?

Better understanding of Greenness as a general indicator of environmental quality.

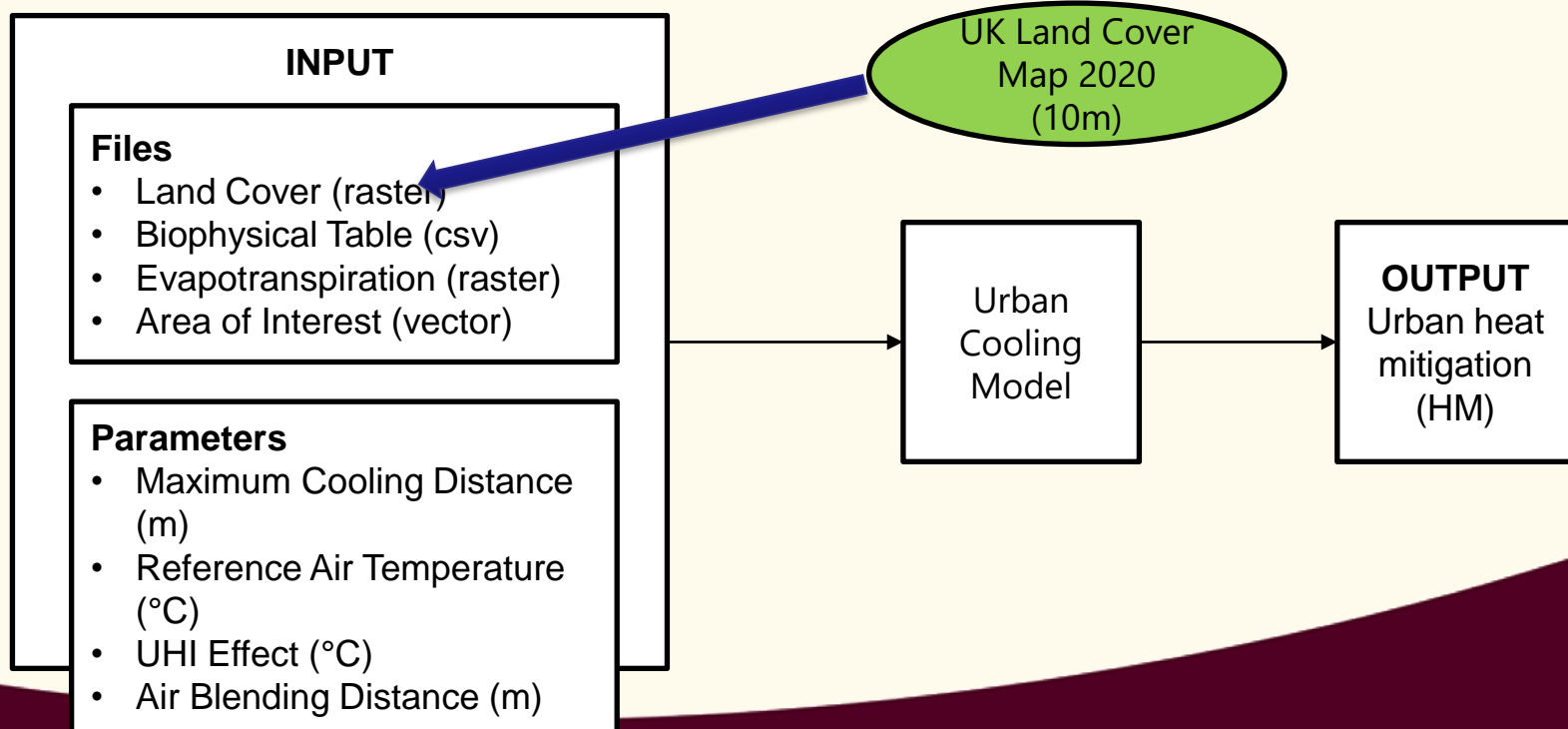


- Improve mapping on Greenness – the general “natural” quality of the urban environment. Greenness without trees v greenness with trees (Ground level v canopy greenness).
- Better understand inequalities in outside environmental quality.



What would we do with tree data?  
A better understanding of urban GI ecosystem service performance.

## Urban heat mitigation (HM)



What would we do with tree data?

Develop a better understanding of the content and structure of the urban ecosystem.



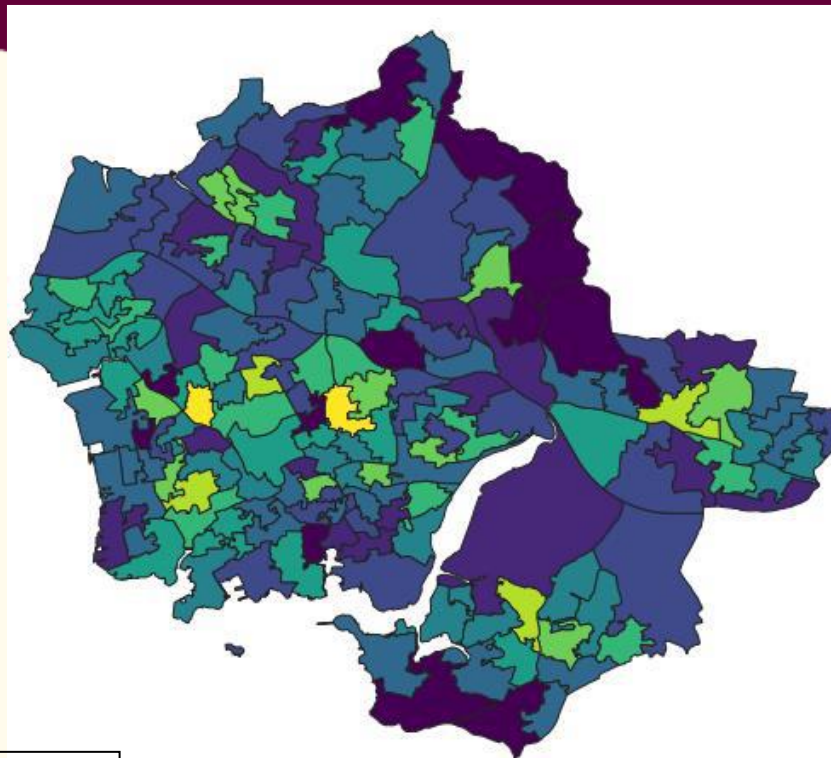
- Understanding trees in the urban ecosystem context – Urban Habitat Mapping Pilot.

Image of pilot Urban Habitat Map – removed due to data licensing restrictions.

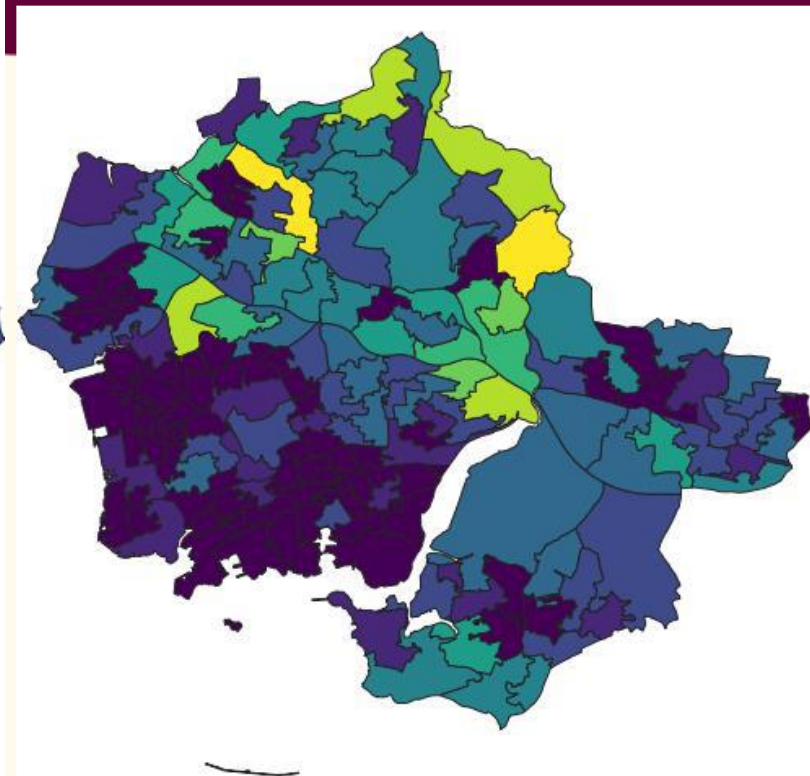
© Natural England 2022, reproduced with the permission of Natural England.  
Contains, or is derived from, information supplied by Ordnance Survey. © Crown copyright and database rights 2022. Ordnance Survey 100022021. EA Lidar. APGB Licensed Data: © **Getmapping Plc and Bluesky International Limited 2022.**



Data into Greenness Grid, but can also be displayed using LSOA.



Scattered Trees



Woodlands

© Natural England 2022, reproduced with the permission of Natural England.  
Contains, or is derived from, information supplied by Ordnance Survey. © Crown copyright and database rights 2022. Ordnance Survey 100022021. EA Lidar. APGB Licensed Data: © Getmapping Plc and Bluesky International Limited 2022.

0 0.75 1.5 km

0 0.75 1.5 km

Thank you.

NATURAL  
ENGLAND



Martin Moss. Senior Adviser Green Infrastructure.  
[martin.moss@naturalengland.org.uk](mailto:martin.moss@naturalengland.org.uk)