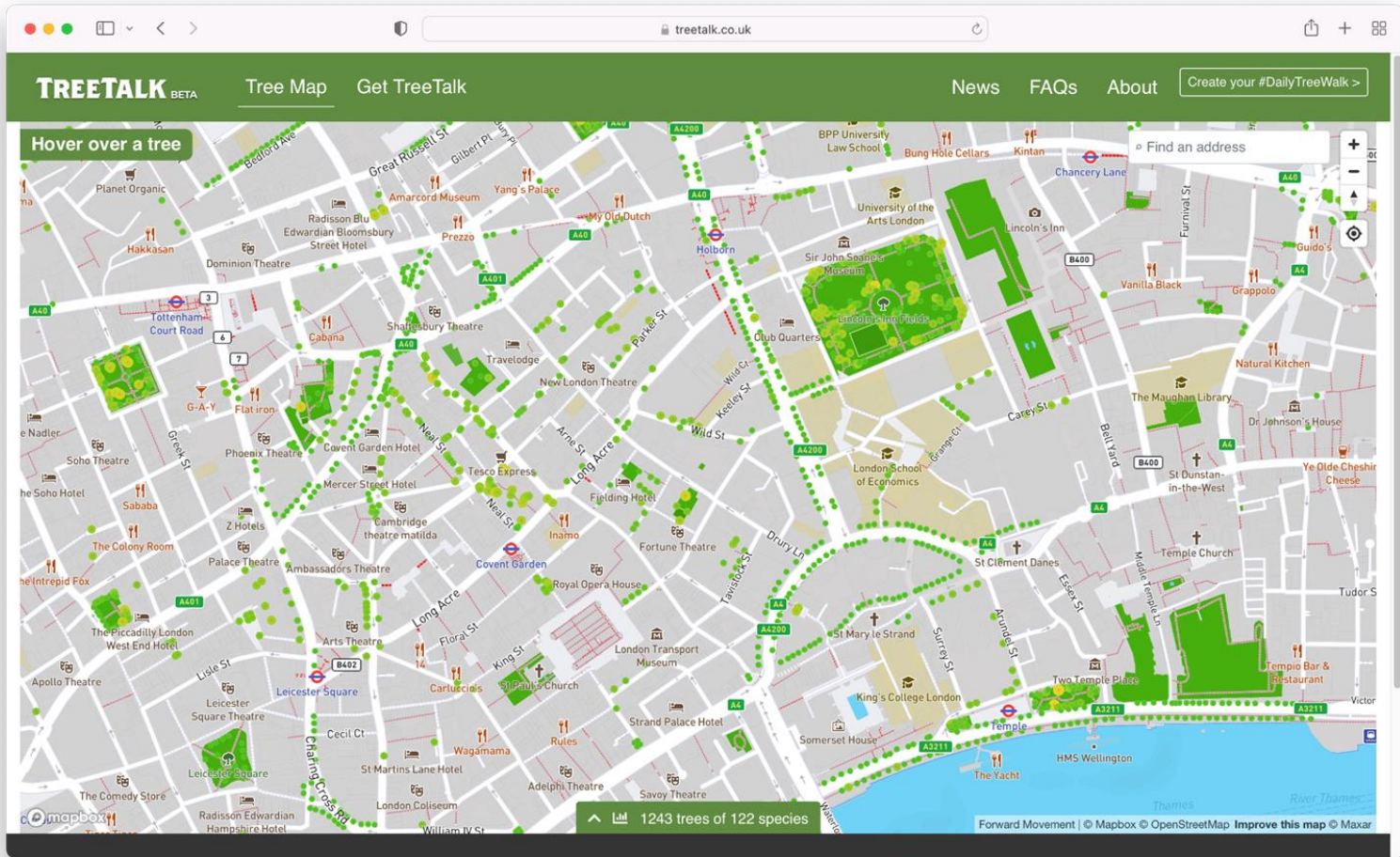




# greentalk

connecting  
people and  
landscapes





Connecting people and landscapes

greentalk

tree talk .co .uk


TREETALK BETA Tree Map Get TreeTalk News FAQs About Create your #DailyTreeWalk >

Find an address

**Red Maple**  
Acer rubrum

Create your daily walk around this tree >

A North American maple often planted for its red leaf colouring in the autumn. It is also one of the parents of Freeman's Maple which tends to be more frequent.

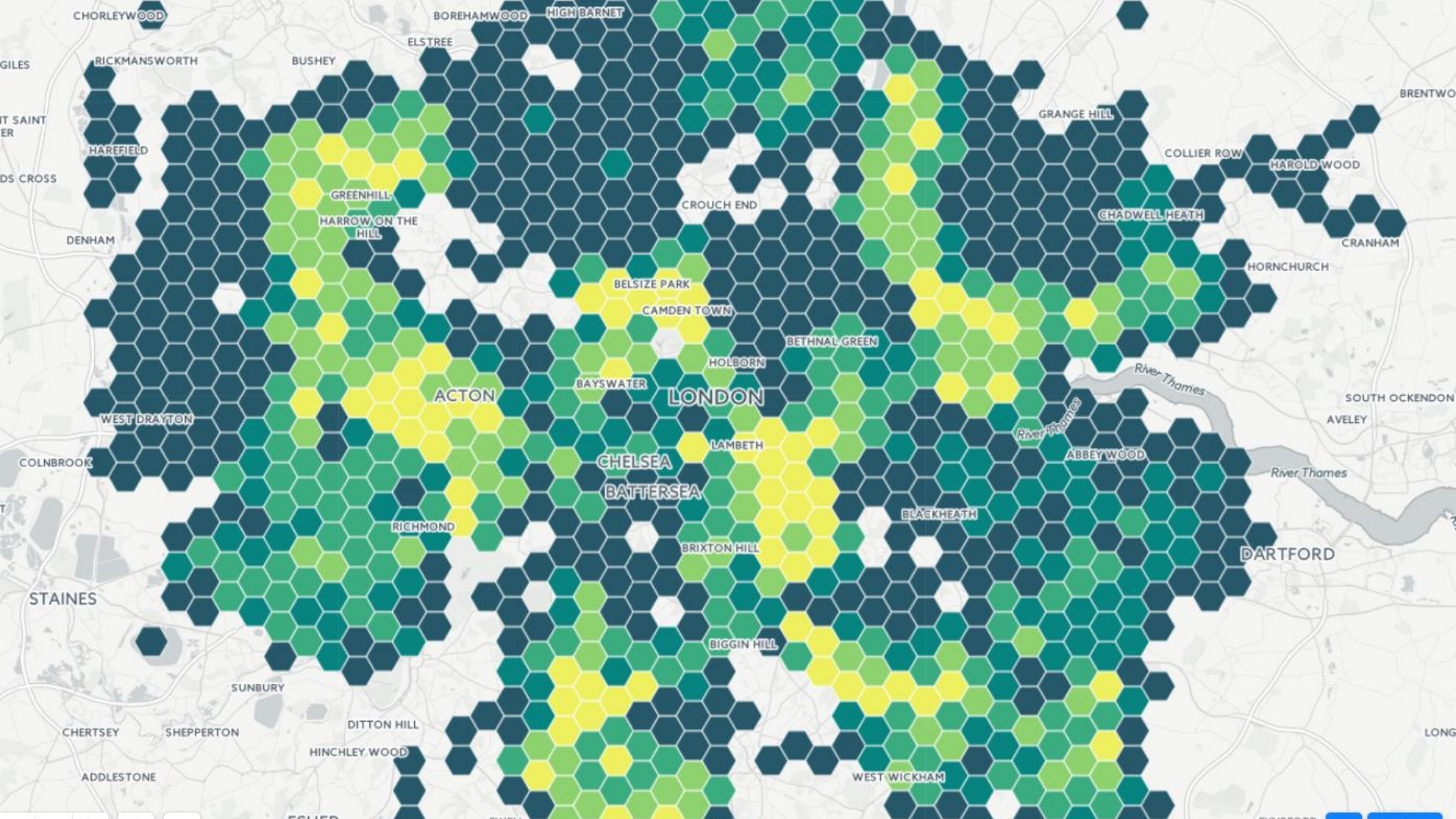


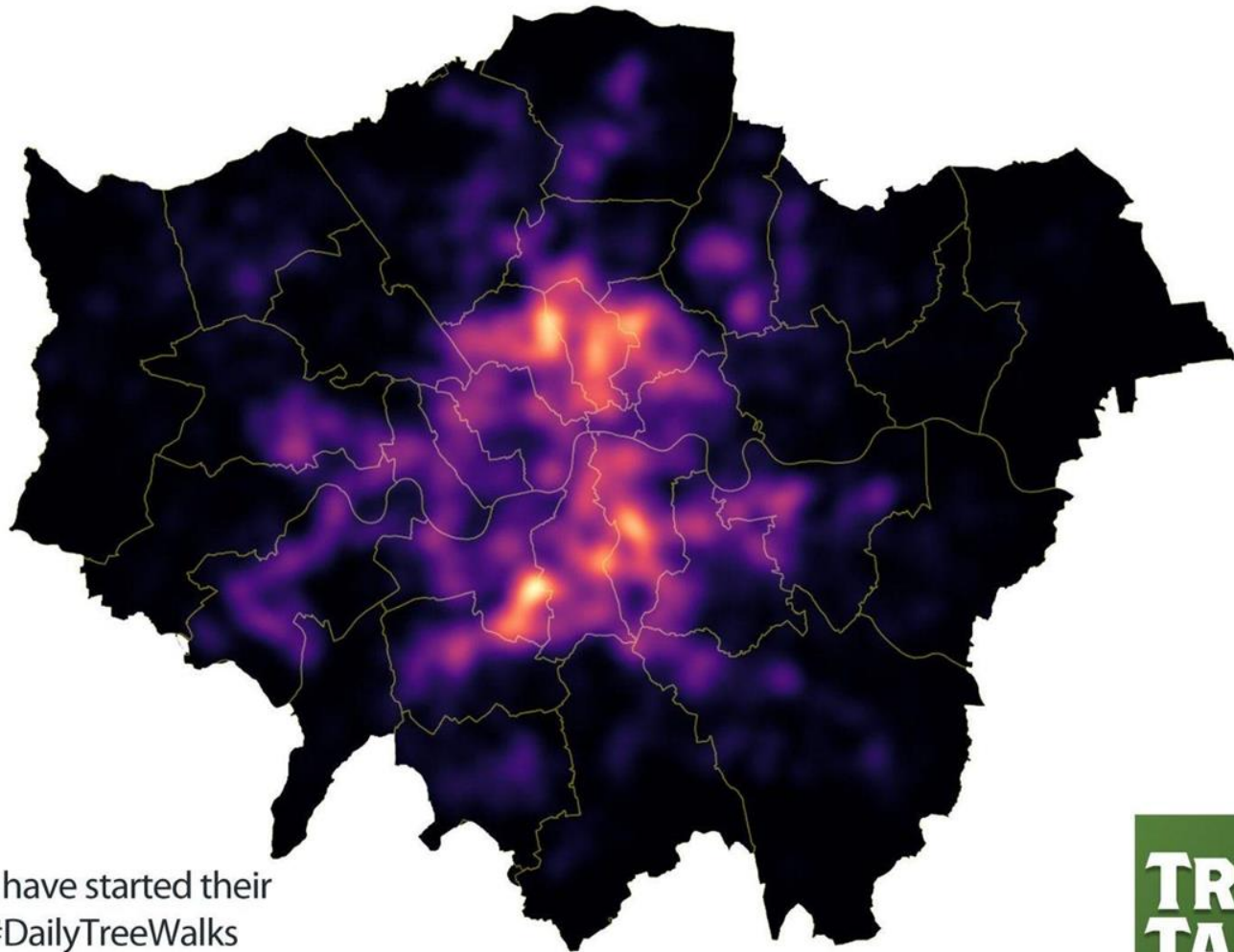
337 species in view. Zoom in for counts.

Locally Frequent Locally Least Frequent Alphabetical Latin names

Amelanchier laevis	Tilia americana	Sorbus americana	Cotinus obovatus	Salix pentandra	Kolkwitzia amabilis 'Pink Cloud'	Pinus wallichiana	Pinus leucodermis	Callistemon laevis	
Ulmus glabra 'Camperdownii'	Zelkova carpinifolia	Liquidambar acalycina	Quercus castaneifolia	Photinia serrulata	Tamarix chinensis	Pinus pinaster	Picea pungens 'Globosa'	Quercus suber	
Prunus x dawcykensis	Acer japonicum	Juniperus virginiana	Pinus strobus	Abies alba	Sequoiadendron giganteum	Ligustrum ovalifolium 'Aurea'	Alnus viridis	Fraxinus pennsylvanica	
Salix cinerea ssp. oleifolia	Callis occidentalis	Davidia involucrata	Ilex aquifolium 'Ferox'	Tilia henryana	Laburnum x watereri	Calocedrus decurrens	Carpinus japonica	Pinus jeffreyi	Gymnocladus dioica
Quercus x hispanica 'Lucombeana'	Catalpa speciosa	Fagus sylvatica 'Riversii'	Acer palmatum 'Atropurpureum'	Rhododendron ponticum	Sorbus sargentiana	Sorbus latifolia	Quercus petraea		
Prunus 'Shirofugen'	Magnolia stellata	Pinus pinea	Sorbus domestica	Nyssa sylvatica	Quercus x turneri	Cotoneaster x watereri	Viburnum lantana	Morus alba 'Pendula'	Pyrus salicifolia







Where Londoners have started their  
TreeTalk London #DailyTreeWalks

May - July 2020

source: [www.treetalk.co.uk](http://www.treetalk.co.uk)

**TREE  
TALK**



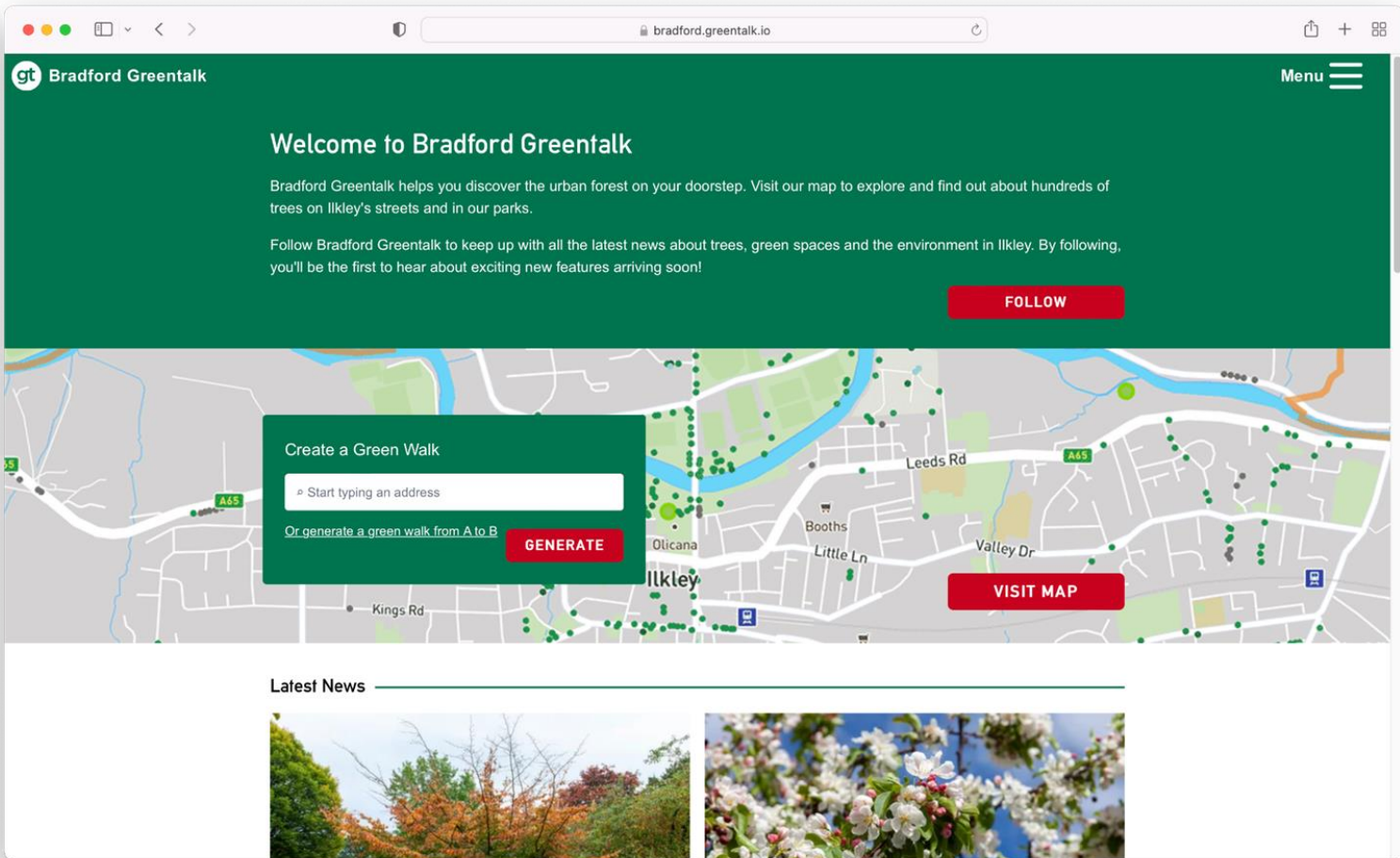
*'More fun than Pokemon Go!'*

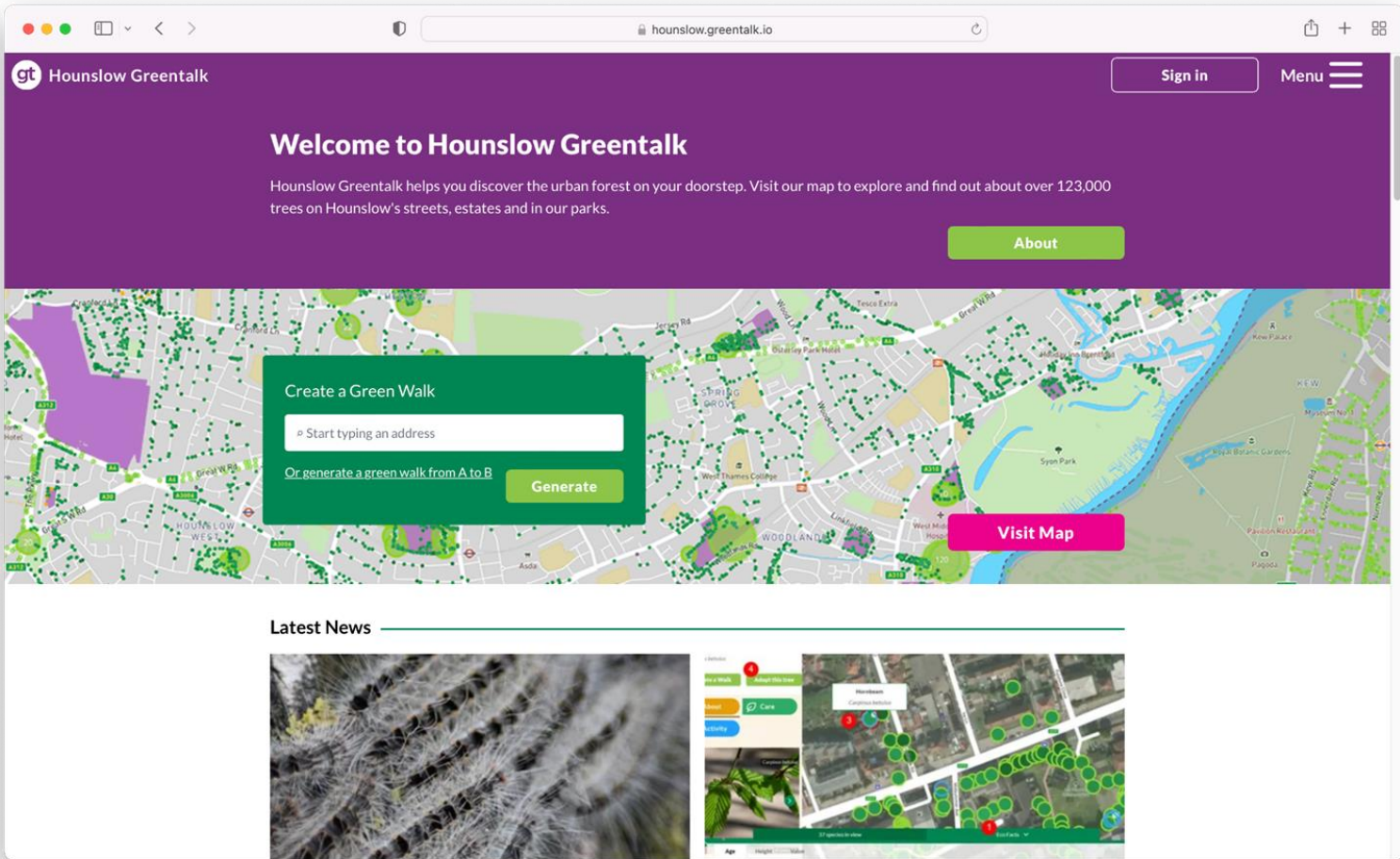
*'One of the best things  
I've found in lockdown'*

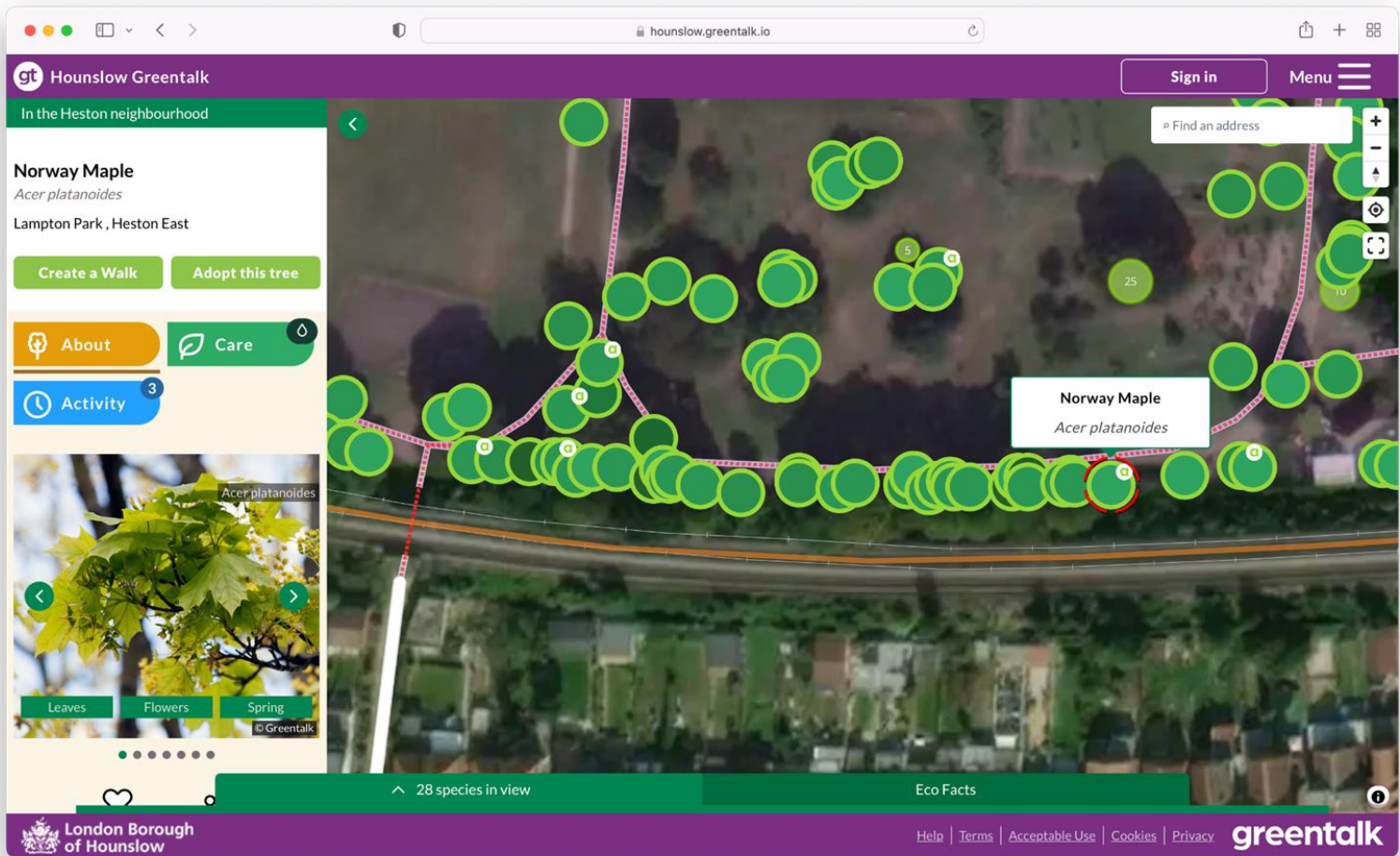
*'Now I've got tree envy'*

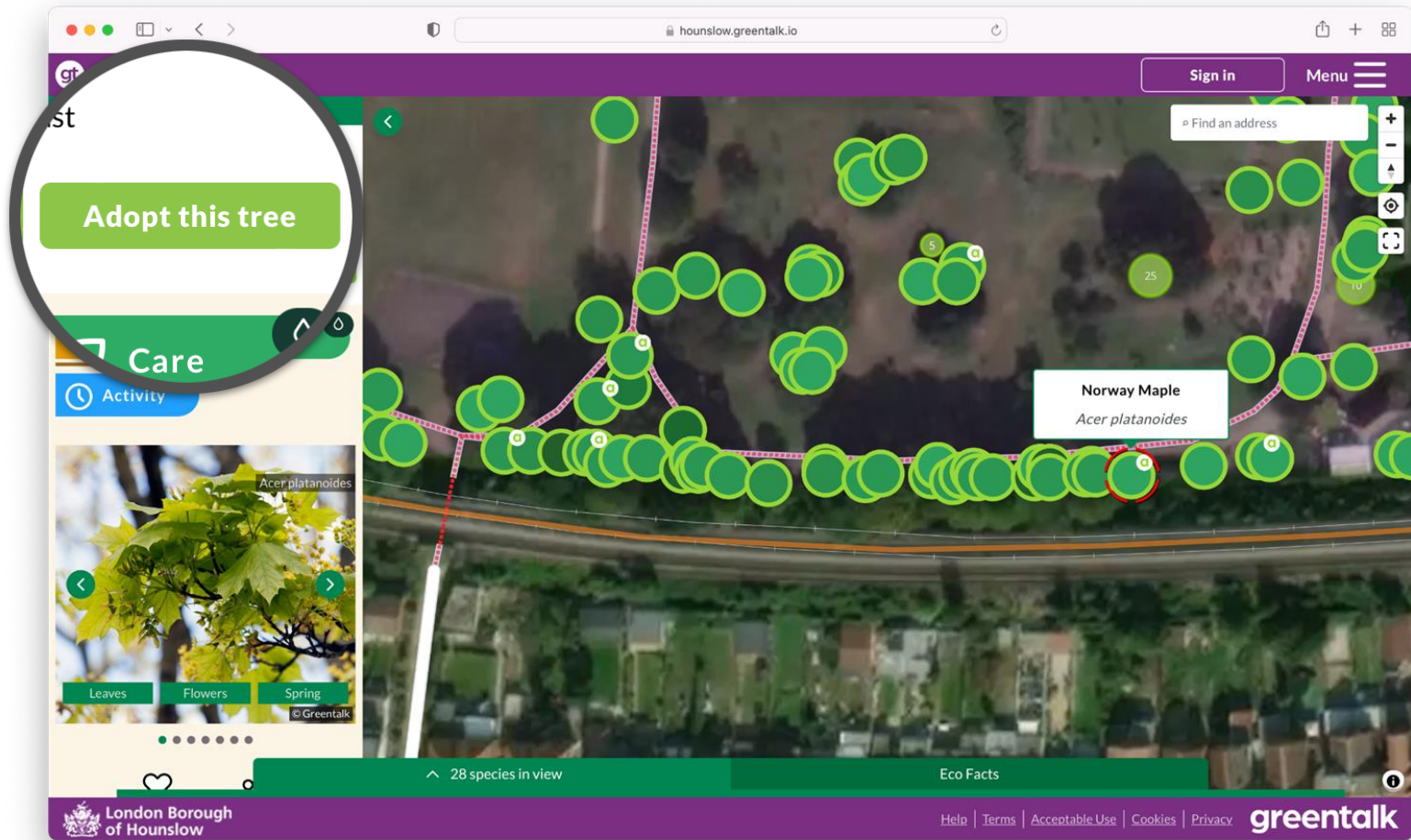
*'It's made lots of people's days better—thank  
you for coming up with such a great idea, and  
building it!'*











hounslow.greentalk.io

gt Hounslow Greentalk

Se Sequoia6 Menu

Find an address

Common Lime

Ginkgo  
*Ginkgo biloba*

Leaves Summer © Greentalk

Like Share

2 people have liked this Tree

An ancient species of tree that was around before the Dinosaurs. It can live for centuries and is unaffected by virtually all pests and diseases. Most trees are male, but occasionally a female might be seen which has very smelly fruit in the autumn.

This Tree's value is  
£21797

£100

Learn more

80 species in view

Eco Facts

London Borough of Hounslow

greentalk

Help | Terms | Acceptable Use | Cookies | Privacy

hounslow.greentalk.io

gt Hounslow Greentalk

Se Sequoia6 Menu

Find an address

**Common Lime**

**Ginkgo**  
*Ginkgo biloba*

Like

Se 2 people have liked

ancient species of tree and centuries ago, but occasionally a female might be seen which has very smelly fruit in the autumn.

This Tree's value is £21797

£100

80 species in view

Eco Facts

London Borough of Hounslow

Help | Terms | Acceptable Use | Cookies | Privacy greentalk

# Greentalk asks

**Greentalk is uniquely positioned to act as the first contact point for citizens wanting to explore and understand their trees.**

- Tree data in the public domain
- Timely, accurate and complete
- APIs to enable frequent data updates
- Data standardisation (like the Forest Research Individual Tree Data Standard)
- Collaborative data collection and enhancement – enable the public to get involved

# The future for Greentalk

- We can work with multiple data types and datasets (they don't even need to be trees!)
- We can integrate not point specific data, e.g. weather, canopy cover etc.
- We can integrate with existing asset management systems
- We are developing a suite of public-facing features to engage and illuminate urban environments
- We can enable collaboration between people, councils and land managers



A person's hands are shown holding a smartphone in a lush forest. The phone's screen displays a photograph of the forest, mirroring the background. The person is wearing a yellow sweater and a black watch. The forest is filled with tall trees and green foliage, with sunlight filtering through the canopy.

Start exploring

visit [greentalklabs.com](https://greentalklabs.com)