



Leading **nature-based smart city** solutions



The **greehill Digital Twin Technology** accelerates the **digital transformation** of green asset management.

We help cities amplify the impact of **nature-based solutions** on **sustainability, resilience, biodiversity, and citizen well-being.**



Make your city **healthier, safer & more resilient** – for you & the **next generation**



Sustainability

- ↑ Abundance & health of trees
- ↑ Healthy age structure
- ↓ Energy consumption



Biodiversity

- ↑ Climate resilience of the urban forest
- ↑ Pest & disease control (10-20-30 rule)
- ↑ Habitat & nature conservation



Resilience

- ↓ Heat-islands
- ↓ Storm damage
- ↑ Infrastructure stability



Well-being

- ↑ Air quality & cooling
- ↑ Community building
- ↑ Physical & mental health

We capture a cm-accurate **point cloud**
of your **entire urban environment**



We create **digital twins** of green urban assets using the latest **AI technologies**

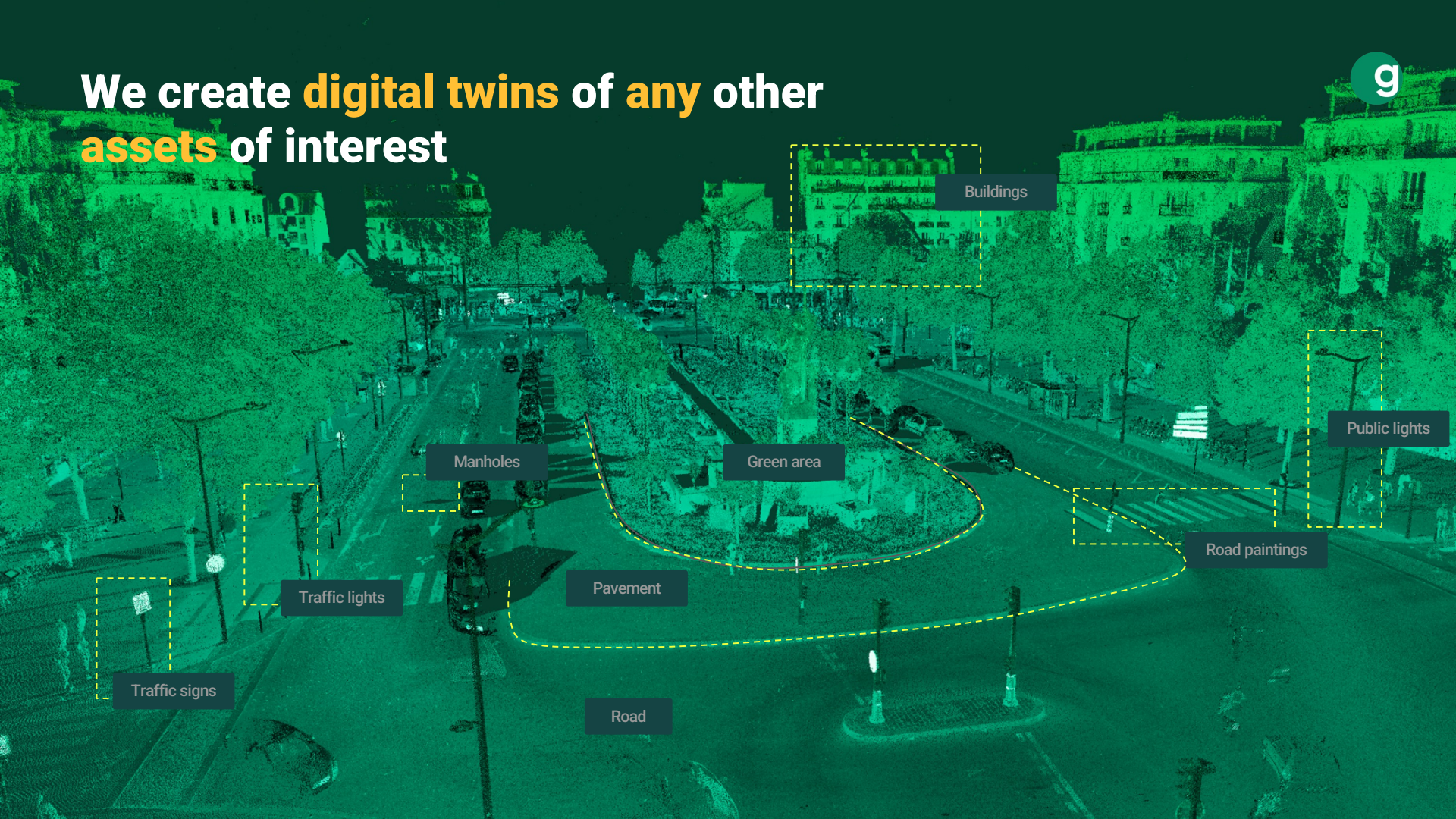


Platanus orientalis

Alnus cordata

Platanus orientalis

We create **digital twins** of **any** other **assets** of interest



Buildings

Public lights

Road paintings

Green area

Pavement

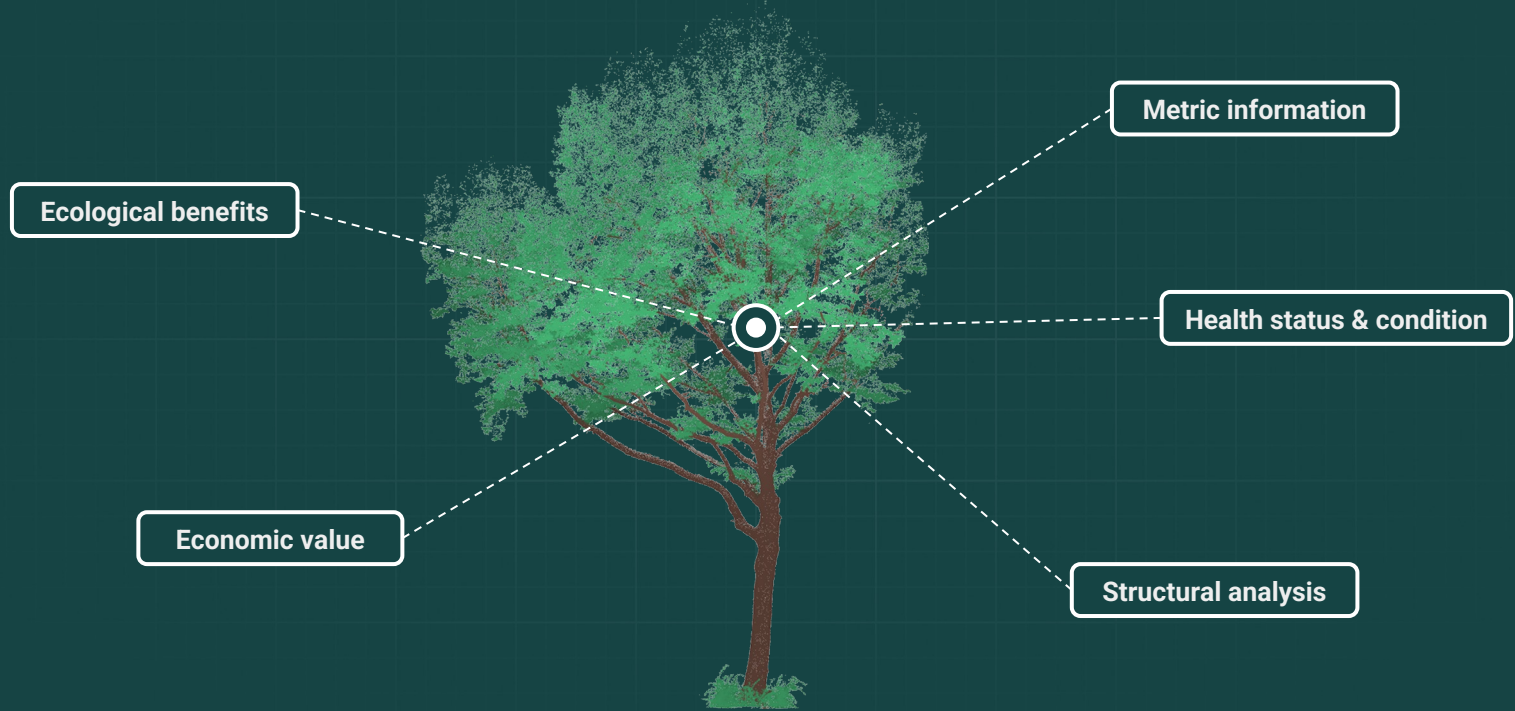
Road

Manholes

Traffic lights

Traffic signs

All information at your fingertips



greenhill digital twin of a tree

Improve the **quality** of your urban forest & **boost** your **efficiency** in daily operations

1

Create a **complete tree inventory** that integrates easily with your existing management approach

2

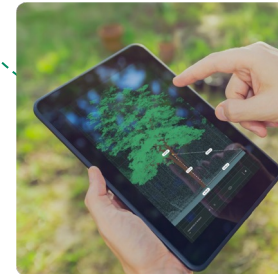
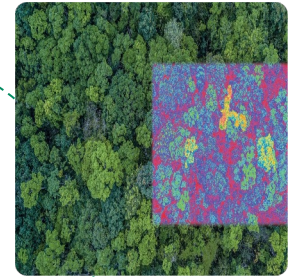
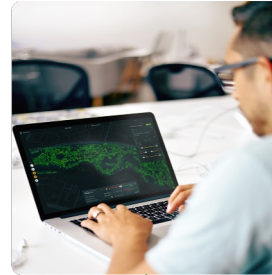
Increase the **safety** of citizens and infrastructure through semi-automated **tree inspections**

3

Keep your urban forest **healthier** through **regular**, satellite-based **tree health assessments**

4

... and **much more** (quantify economic value, simulate stability in storms, etc.)



Up to 30% increase
in productivity*

Make your urban forest **measurable** & **manageable**

1

Quantify, optimize and monitor the **impact** (ESS) of trees on their environment and human life

2

Gain valuable **insights** about your green assets to set evidence-based **green governance targets**

3

Identify possible locations to **plant new trees** and actions to **increase the greening** of urban areas

4

Simulate the **local impact** and **ROI** of your actions and easily develop an **urban greening plan**



"If you can't measure it,
you can't manage it."

greehill. Leading nature-based smart city solutions.



Founded

2017

People

40+

Locations

Berlin, Budapest, Paris, San Francisco, Singapore



Trusted by NParks, Singapore



Anchor technology for *United Nations WSIS Prizes*, won by NParks



Awarded by EIT Climate-KIC

TIM Tree Impact Manager

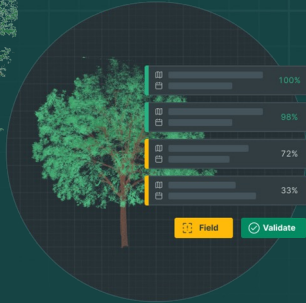
	BASIC	STANDARD	INDIVIDUAL
Unique identifier	✓	✓	✓
Position	✓	✓	✓
Species	✓	✓	✓
Single images	1 image / tree	5 images / tree	5 images / tree
Metric data	✓	✓	✓
3D digital twin of each tree	✗	✓	✓
Panoramic images	✗	✓	✓
gh Safety & Health analytics	✗	✓	✓
Tree value (economic)	✗	✓	✓
Age of the tree (estimation)	✗	✗	OPTIONAL
Protected / critical root zones	✗	✗	OPTIONAL
Overhead hazards (lamps, wires)	✗	✗	OPTIONAL
Planting locations	✗	✗	OPTIONAL
Road clearance	✗	✗	OPTIONAL
Tree inspection support (ISA, ANSI, FLL)	✗	✗	OPTIONAL
Tree health assesment (satellite)	✗	✗	OPTIONAL
Land covers	✗	✗	OPTIONAL
Jurisdiction & legal obligations	✗	✗	OPTIONAL

1. **TIM BASIC** tree inventory with all metric data, GIS position, species, unique identifier & image
2. **TIM STANDARD** tree inventory as before plus 3D digital twin of each tree, panoramic images, gh safety & health analytics, tree value (economic)
3. **TIM INDIVIDUAL** tree inventory as before plus the optional choice to create your 4D tree inventory
 - Green Operations
 - Green Urban Planning
 - Green Governance

* The indicated price is valid for a subscription of at least 4 years, with more than 40 000 trees and it includes a yearly update of the information. License fee for TIM standard is included in the subscription. If a subscription is ended, TIM license fee is applied. The license fee includes unlimited number of users. Please note, that cloud hosting costs are not included.



Tree Mapping Workshop 2022/06/16 (via Zoom)

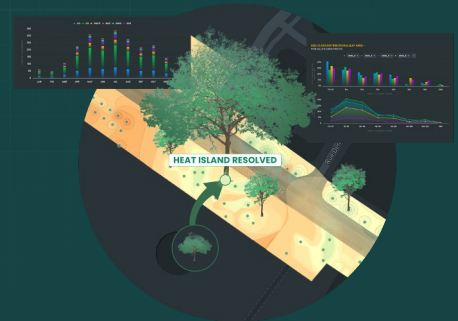


Contact information:

sven.koenig@greehill.com

+49 173 31 47 611

www.greehill.com





Let's start creating a
greener future today



sven.koenig@greehill.com
greehill.com