

## The Central Scotland Green Network: Planning and NPF4

Emilie Wadsworth, Green Action Trust

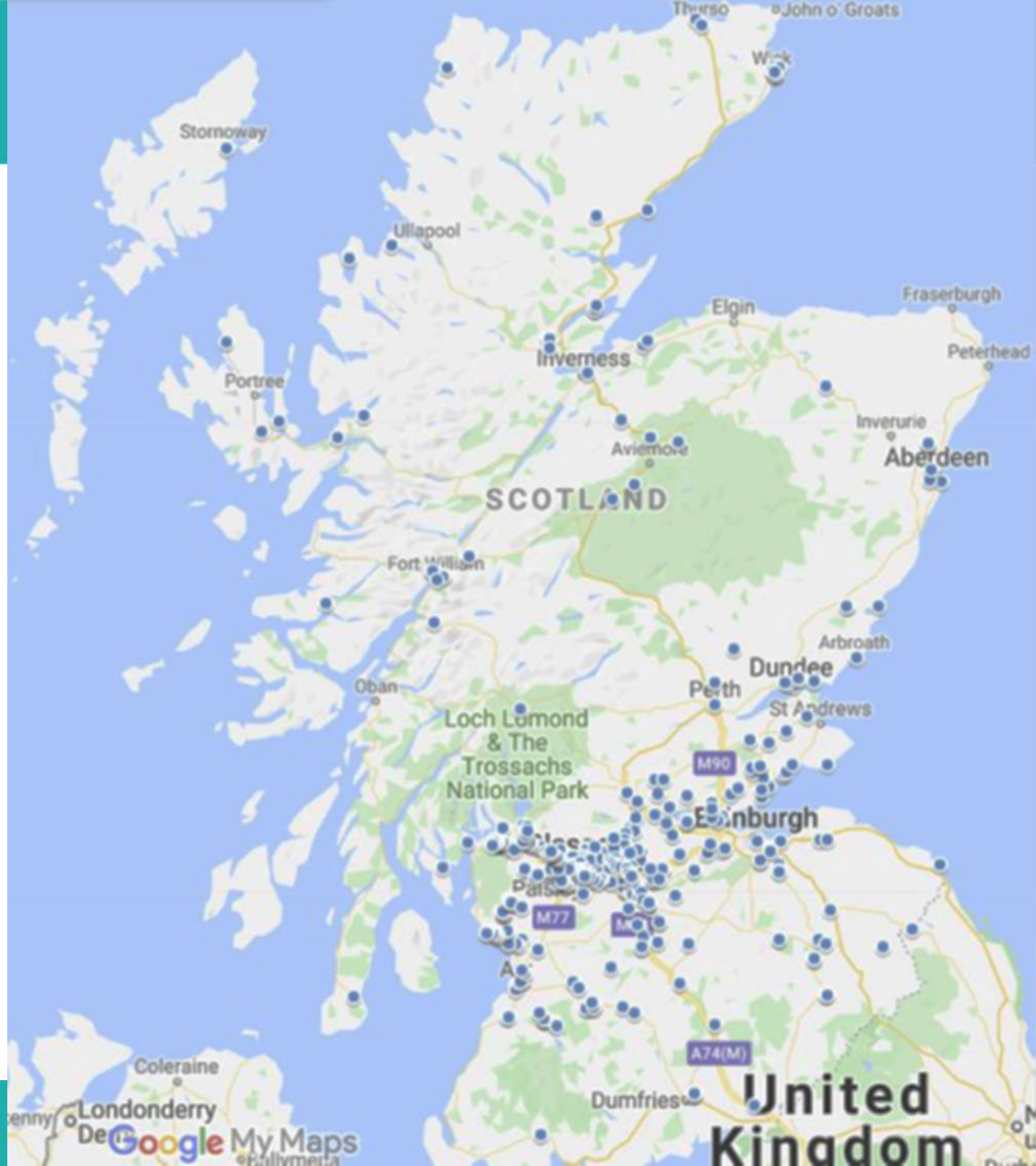
Trees Planning and Development Seminar 19<sup>th</sup> May 2023

# The Green Action Trust

Scotland's Environmental Regeneration Charity

- delivering social, economic, health and environmental outcomes through environmental action
- targeted on the most challenged and disadvantaged areas and communities
- leading the delivery of the **Central Scotland Green Network** - the largest Blue-Green Infrastructure initiative of its kind in Europe
- leading the 10,000 Raingardens for Scotland Programme to deliver multi-functional climate adaptation interventions across the country

We operate at all scales from single site to landscape scale



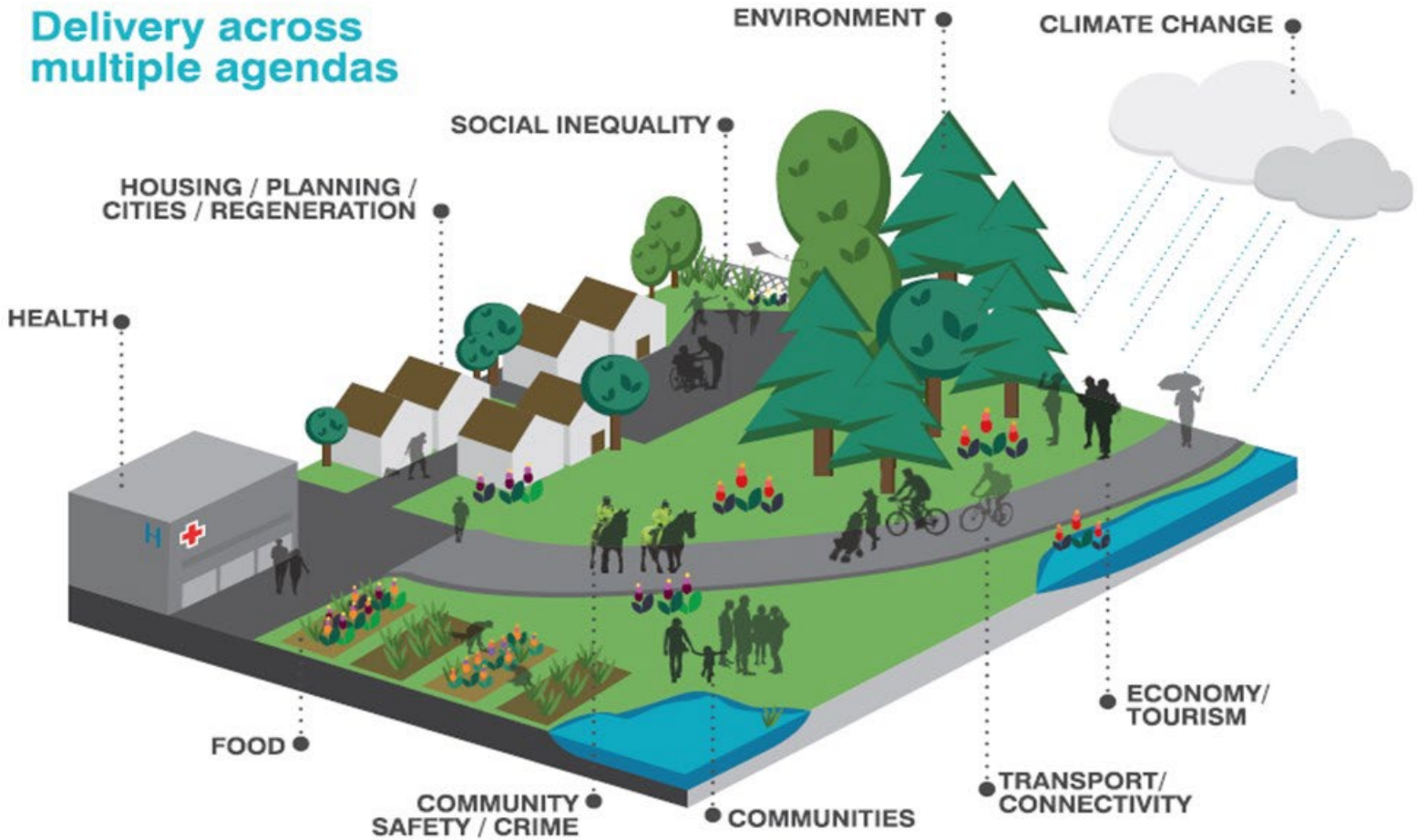
- Scottish Government Initiative since 2010  
NPF2 | NPF3 | Programmes for Government |  
NPF4
- Overseen by Environment & Economy Leaders Group
- Scottish Government support – policy, sponsorship,  
agency participation, funding
- Central Scotland Green Network Trust established to  
‘drive forward delivery’ in 2014 with Programme Board
- Now a major programme delivered on behalf of  
Scottish Government by Green Action Trust



# The Vision



*By 2050, Central Scotland has been transformed into a place where the environment adds value to the economy and where people's lives are enriched by its quality*





## Creating and improving 10,628ha of urban greenspace

Parks and play areas, woodlands, meadows, gardens and green corridors alongside paths, roads, rivers and canals



## Delivering green infrastructure for 248,884 new households, 4,173ha of new industrial developments and 8,660ha of existing urban areas

Green roofs, green walls, street trees and raingardens



## Greening 5,875ha of vacant and derelict land

Transforming spaces through temporary or permanent greening interventions



## Providing 9,670 allotments and 129ha of community orchards and gardens

Resources that encourage participation and cohesiveness, empower communities and improve health and wellbeing



## Creating, enhancing and protecting 222,136ha of habitat

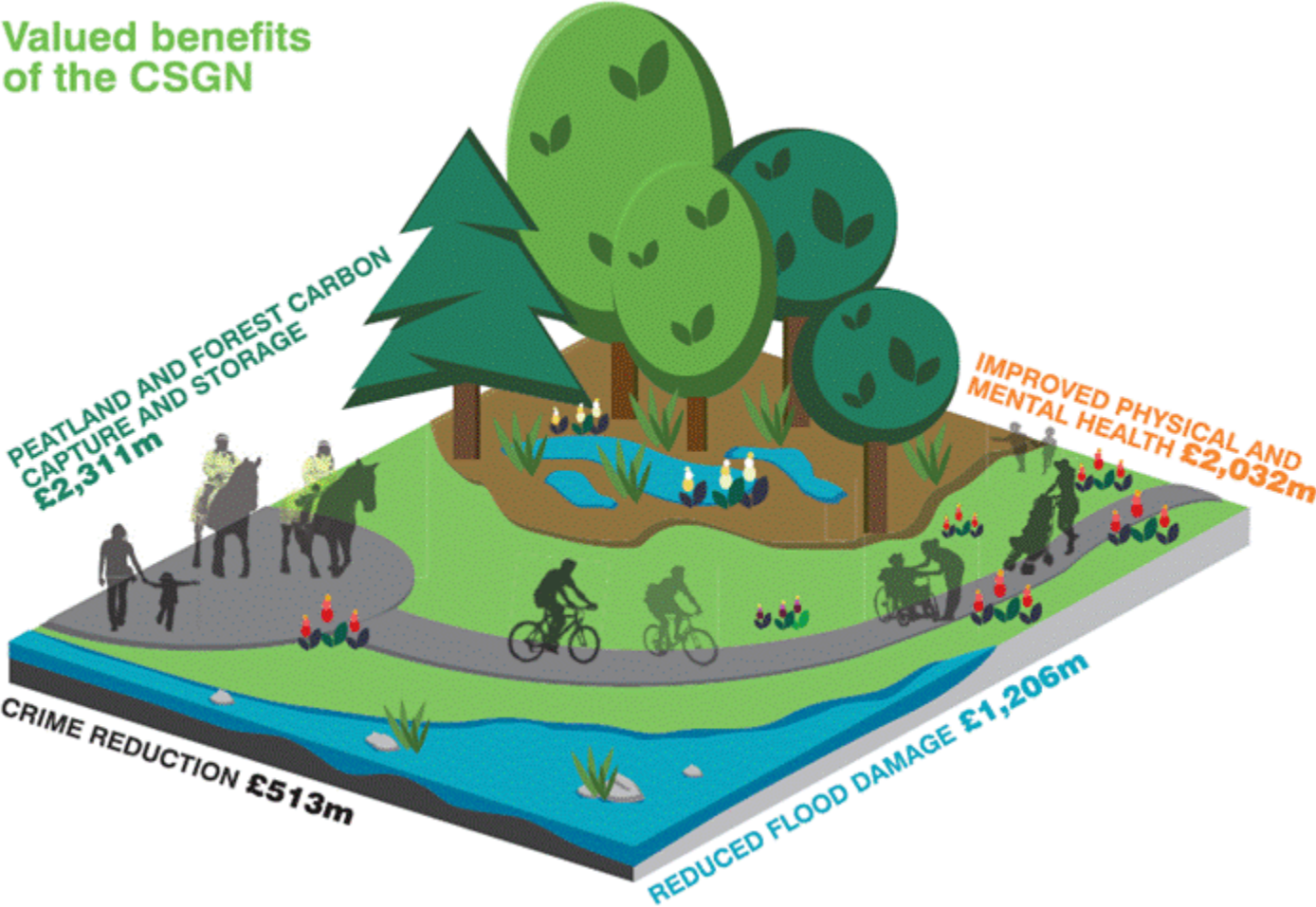
Woodlands, grasslands, wetlands, heathlands and peatlands












## Making 2,500km of green active travel networks

Cycling and walking routes integrated with green infrastructure

### Valued benefits of the CSGN



 <p>BETTER AIR QUALITY AND WATER QUALITY</p>	 <p>ABATEMENT OF NOISE POLLUTION</p>	 <p>SHIFTS TO MORE SUSTAINABLE MEANS OF TRANSPORT</p>
 <p>ENHANCED BIODIVERSITY AND ENLARGED HABITATS</p>	 <p>MORE ATTRACTIVE ENVIRONMENTS FOR SHOPPERS, TOURISTS AND EMPLOYEES</p>	 <p>GREATER RESOURCE AVAILABILITY FOR SUSTAINABLE INDUSTRIES</p>
 <p>INCREASED OPPORTUNITY FOR FORMAL AND INFORMAL EDUCATION ACTIVITIES</p>	 <p>REDUCED BUILDING HEATING REQUIREMENTS</p>	 <p>A MORE ENGAGED LOCAL COMMUNITY</p>



© Brian Evans/Gillespies



## CSGN Place themes:

- A place for growth
- A place in balance
- A place to feel good
- A place to belong
- A place for nature



## A place for growth

- Bringing vacant and derelict land into beneficial use
- Developing business case studies
- Increasing employment and training in land-based 'green' industries

## A place in balance

- Increasing woodland creation
- Encouraging urban greening
- Improving the water environment



## **A place to feel good**

- Creating attractive and accessible greenspace or accessible countryside
- Developing a strategic network of high-quality routes for active walking, cycling and recreation
- Encouraging community growing

## **A place to belong**

- Creating greenspace for living
- Creating greenspace for learning and play

## **A place for nature**

- Delivering an integrated habitat network
- Realising good-quality landscape across the whole CSGN area



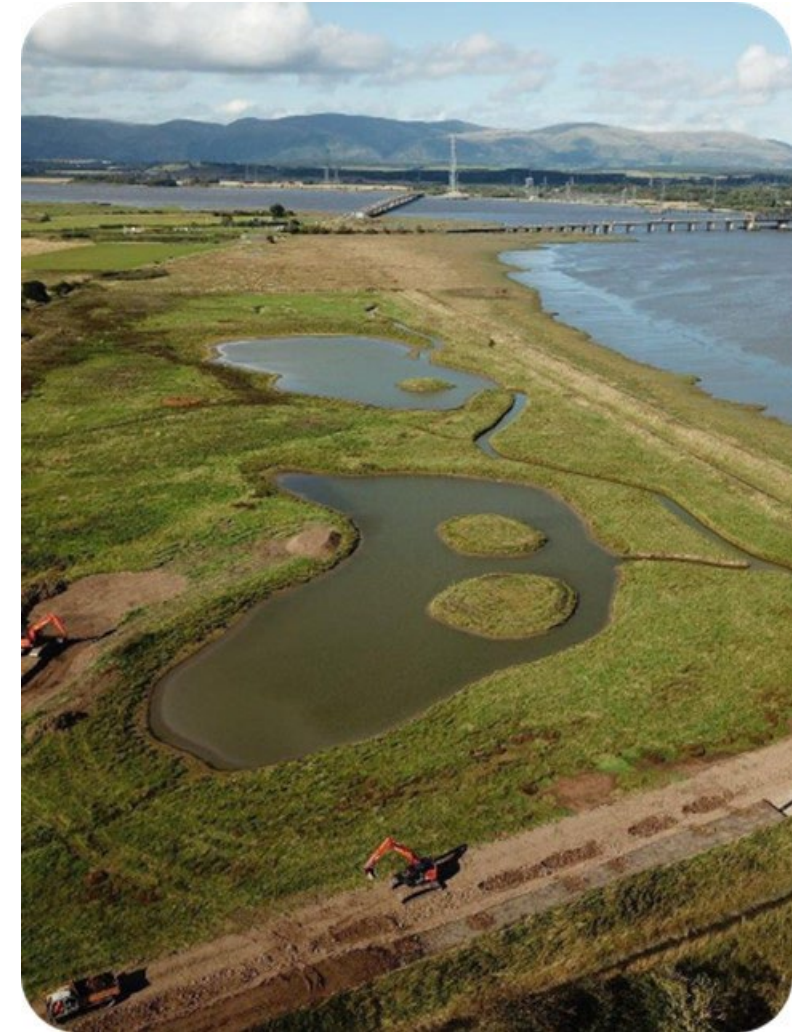
## *National Development in NPF 3 (2014-2023)*

### **CSGN Priorities:**

- Quality local environments – VDL, Disadvantaged areas
- Natural Climate Solutions - Blue-green Cities; Active Travel; Local Food; Woodland; Peatland
- Network connections – Wildlife, People

Expressed at a range of scales through spatial and land use plans

Delivered in partnership



# CSGN Partners



Scottish Canals



SCOTTISH LAND COMMISSION  
COIMISEAN FEARAINN NA H-ALBA



+19 Local Authorities



## *National Development in NPF 4 (2023-2033)*

### Continuation of National Development Status:

- Accelerate urban greening, green blue infrastructure and biodiversity
- Vacant and Derelict Land
- Woodland

### Delivers Liveable Places:

- Restores nature at scale
- Exemplar blue-green infrastructure in placemaking
- Benefits for communities.
- Wellbeing economy



Outcome	Theme	Components
1	Greenspace	Create greenspace in existing urban areas
2		Enhance existing greenspace
3		Create greenspace in new residential areas
4	Green Infrastructure	Deliver GI in new residential developments
5		Deliver GI in new commercial/industrial developments
6		Retrofit GI into existing urban areas
7	Vacant & Derelict Land	Deliver greenspace on V&DL classified for soc/env end-use
8		Deliver temporary greening on V&DL classified as stalled
9		Encourage naturalisation of stalled V&DL
10	Community Growing	Increase the area of allotments by 200%
11		Increase the area of community orchards by 200%
12		Increase the area of community gardens by 200%
13	Habitat	Increase the area of woodland by 50%
14		Create priority grassland, wetland and heathland habitat links
15		Enhance existing grassland, wetland and heathland habitat links
16		Protect and enhance peatland habitats
17	Active Travel	Deliver a strategic network of active travel routes

**Biodiversity and Ecological Coherence**

**Environmentally Disadvantaged Areas**

**Green Active Travel**

**Green Infrastructure**

Raise awareness and understanding of the role of the CSGN in delivering benefits

Maintain a supportive environment for CSGN delivery

Coordinate CSGN partner activities to maximise the effectiveness and multifunctionality of delivery



<b>DP30 Objectives</b>
Biodiversity and ecological coherence
<b>HA1 Increase tree planting levels and woodland cover within the CSGN</b>
HA2 Increase the area of restored peatland within the CSGN
HA3 Increase the area of grassland habitats within the CSGN
HA4 Increase the area of wetland and coastal habitats within the CSGN
<b>HA5 Increase the quality/condition of habitats</b>
<b>HA6 Increase habitat connectivity</b>
Environmentally disadvantaged areas
<b>EQ1 Increase the area of Vacant and Derelict Land converted to use as green infrastructure</b>
EQ2 Reduce environmental inequalities and their impact on those living in disadvantaged areas
Green active travel
AT1 Increase the proportion of the strategic active travel network which runs through greenspaces or green corridors
AT2 Increase the connectivity of the green active travel network
Green Infrastructure
GI1 Increase access to greenspace for people living and working in Central Scotland
GI2 Increase the quality and functionality of greenspaces within the CSGN
<b>GI3 Increase use of the CSGN by people living and working in Central Scotland</b>
GI4 Increase the number of communities owning and/or managing greenspaces and other green infrastructure
<b>GI5 Increase the proportion of new developments which feature high quality green infrastructure</b>
<b>GI6 Increase the level of green infrastructure retrofitting</b>
GI7 Increase the generation of low carbon energy from new and existing greenspaces and green infrastructure
GI8 Increase in the level of employment in roles relating to the creation, management and use of green infrastructure



CSGN woodland **creation** targets are 85,500ha by 2050, with an interim target of 17,100ha by 2030.

Represents an increase from 2010 levels by 30% by 2030 and a 50% increase by 2050, taking us to 256,500hs of woodland in the CSGN.

Annual woodland creation targets to meet these aims were set in 2021 at 2,137ha per year.

The success of tree planting in CSGN has been due to a supporting Forestry grant schemes, and in particular the added CSGN contribution. The retention of this has been advocated for in the recent FGS review.

Forest and Woodland strategies have always supported CSGN woodland creation, now other initiatives such as the Clyde Climate Forest are expanding and accelerating delivery.





Any questions?

**t:** 01501 822015

**a:** Hillhouse ridge, Shottskirk Road, Shotts, Lanarkshire ML7 4JS

**w:** [greenactiontrust.org](http://greenactiontrust.org)



@greenactionT

