

# Trees in Hard Landscapes

## Learning from Greater Lyon

Presented by Anne Jaluzot  
Glasgow City Halls  
22 June 2015



# Garibaldi Street, Lyon, France





**Before**





# After





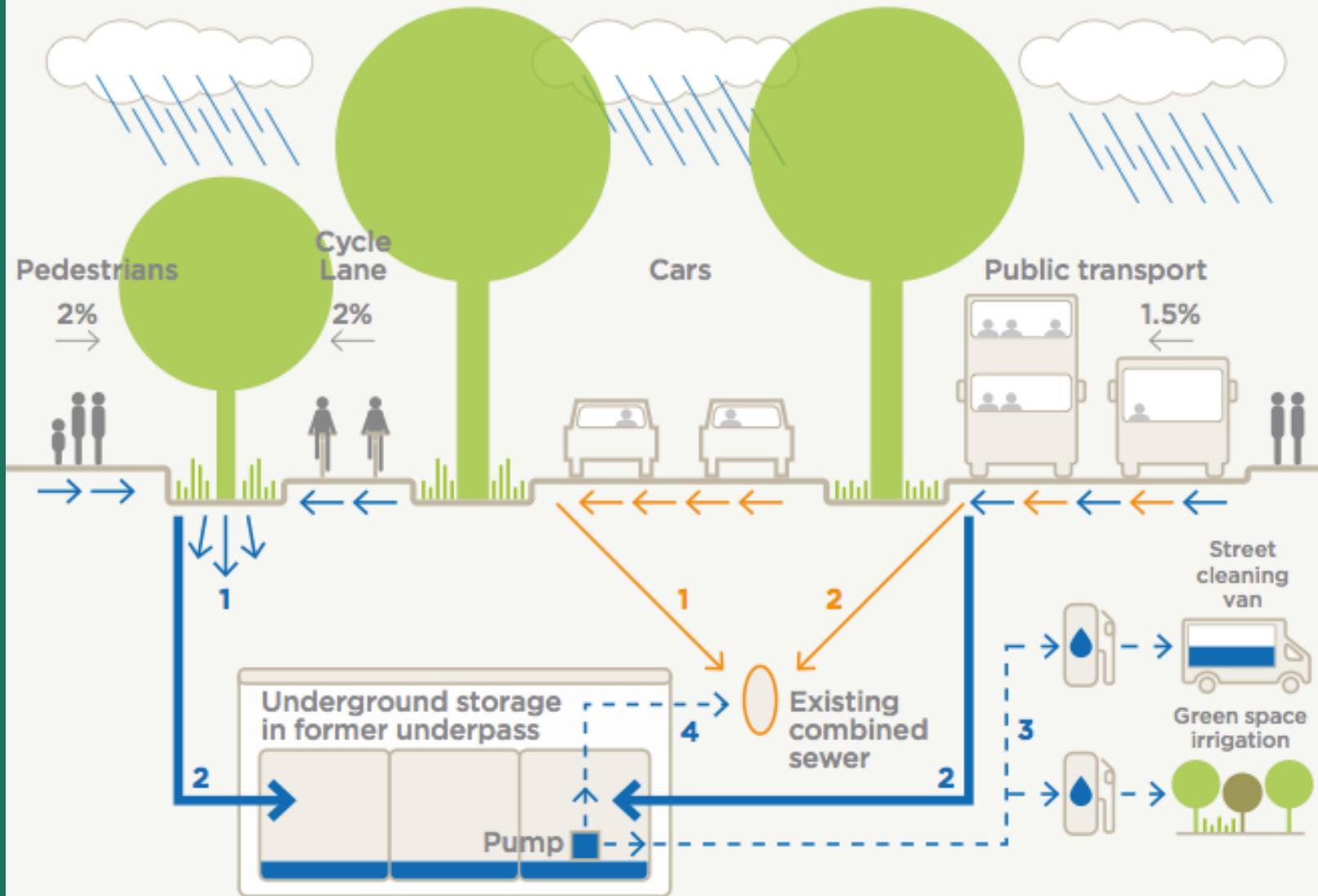






# Water management strategy for Garibaldi Street refurbishment

— Polluted surface water runoff  
— Non-polluted surface water runoff



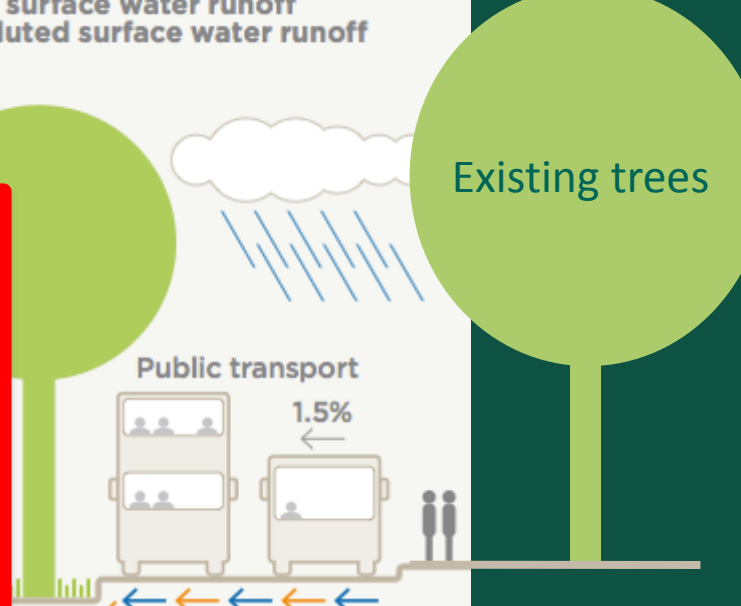
1. Surface water runoff infiltration
2. Overflow and/or storage of surface water runoff
3. Surface water runoff re-use
4. Controlled rate outflow into combined sewer (during heavy storms)

1. Remains directed to existing combined sewer
2. Only directed to combined sewer when winter treatment is applied to the bus lanes



**Water management strategy for Garibaldi Street refurbishment**

— Polluted surface water runoff  
— Non-polluted surface water runoff



POLLUTION	Lower	Higher, incl. salt
HUMIDITY	Wetter	Drier
MAINTENANCE	More manicured	Limited: once a year
FUNCTIONS	Water management & ecological functions	











# Relevance to the UK context?

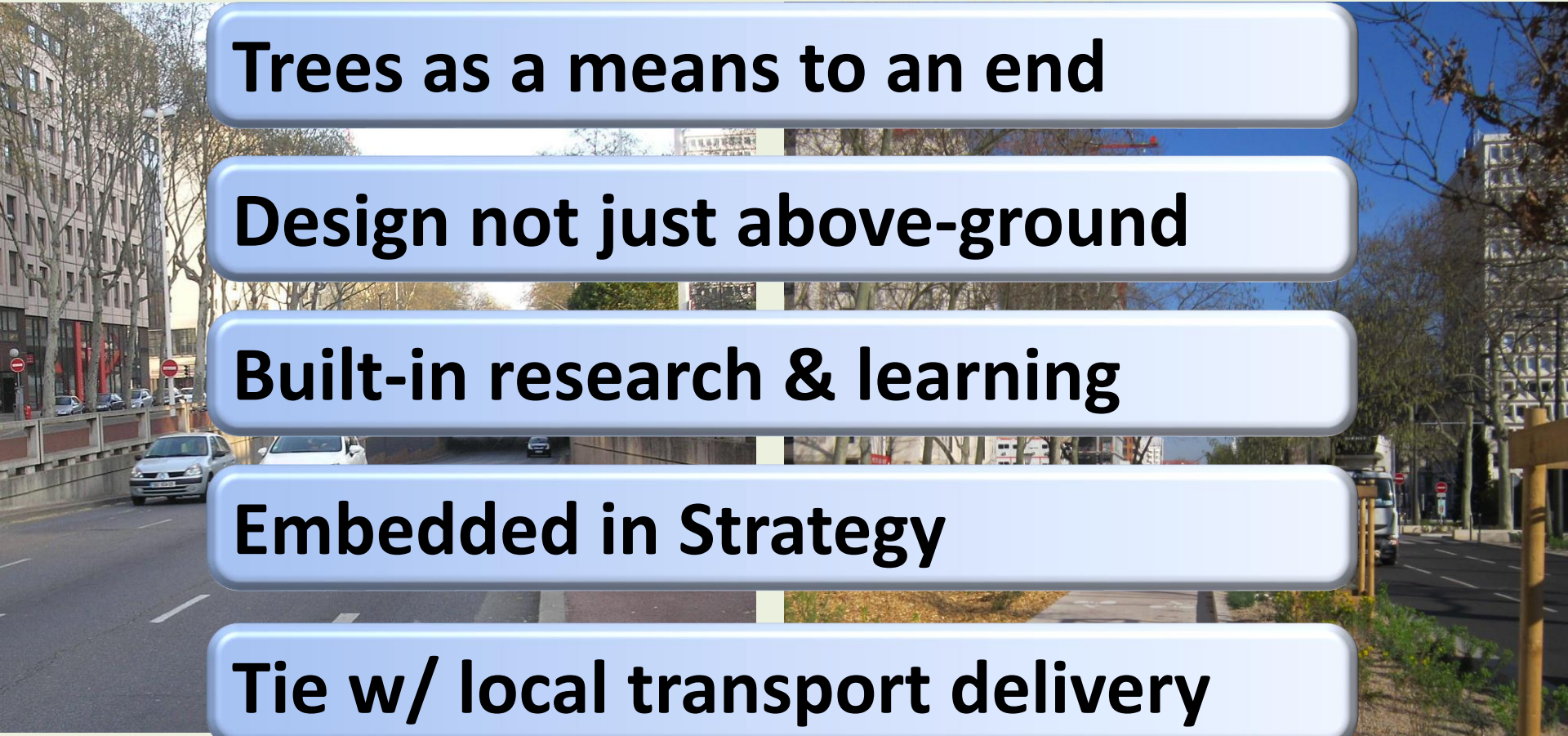
**Trees as a means to an end**

**Design not just above-ground**

**Built-in research & learning**

**Embedded in Strategy**

**Tie w/ local transport delivery**





Rhone embankment in 2000...



...and in 2005



*“Our tree and sustainable transport strategies go hand in hand: the latter frees up some space for the former, the former creates the environment needed for the latter. There is no other way we could have succeeded.”*

**Frédéric Ségur**  
**Arboricultural Manager, Greater Lyon Authority**

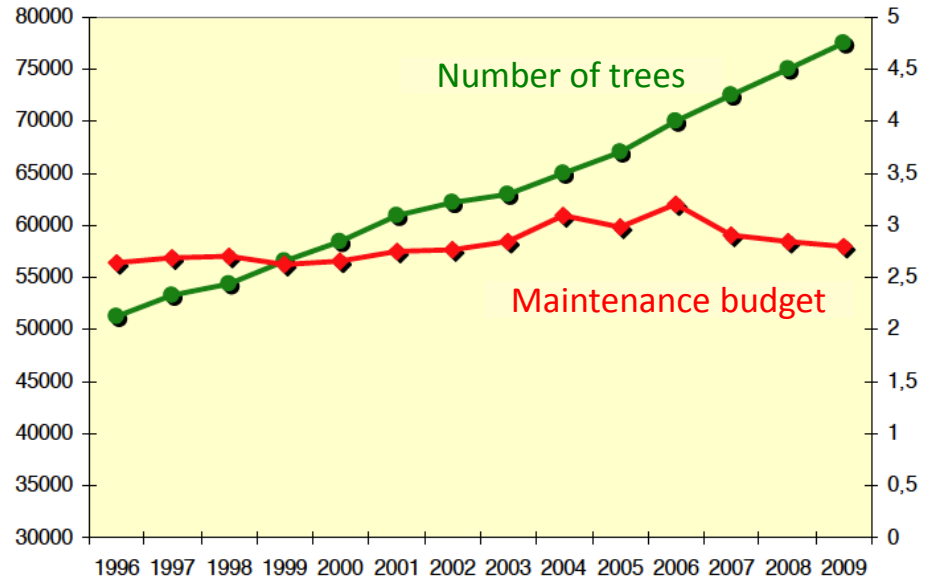
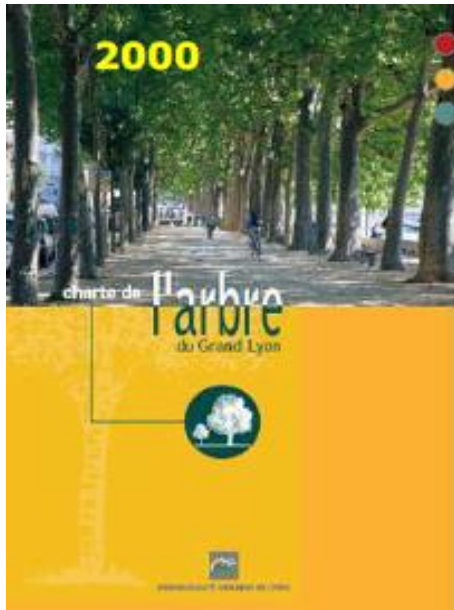




*“Our tree and sustainable transport strategies go hand in hand: the latter frees up some space for the former, the former creates the environment needed for the latter. There is no other way we could have succeeded.”*

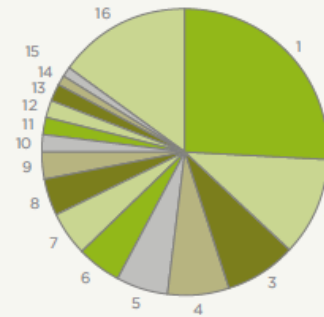
**Frédéric Ségur**  
**Arboricultural Manager, Greater Lyon Authority**





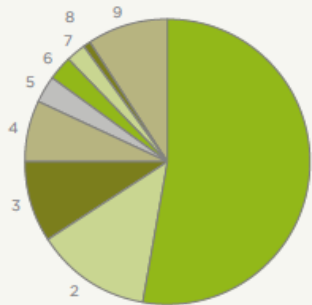
In Greater Lyon, 254 different tree species grow in hard landscapes (+69% compared to 10 years ago)

Species distribution in 2013 (%)



Species	%	Species	%
1 Platanus	26	9 Sophora	3
2 Acer	11	10 Corylus	2
3 Tilia	8	11 Gleditsia	2
4 Celtis	7	12 Aesculus	2
5 Fraxinus	6	13 Ulmus	2
6 Quercus	5	14 Malus	1
7 Prunus	5	15 Zelkova	1
8 Pirus	4	16 Other	15

Species distribution in 1994 (%)



Species	%
1 Platanus	53
2 Acer	13
3 Tilia	9
4 Robinia	7
5 Aesculus	3
6 Prunus	3
7 Celtis	2
8 Populus	1
9 Other	9





(Join us, it's free!)

[www.tdag.org.uk](http://www.tdag.org.uk)

(Follow us on twitter)

[@TDAG\\_TalkTree](https://twitter.com/TDAG_TalkTree)

(Contacting Anne)

[annejaluzot@gmail.com](mailto:annejaluzot@gmail.com)