

# Trees in Hard Landscapes

## Ocean Road

### South Shields

Allison Macleod  
Landscape Architect

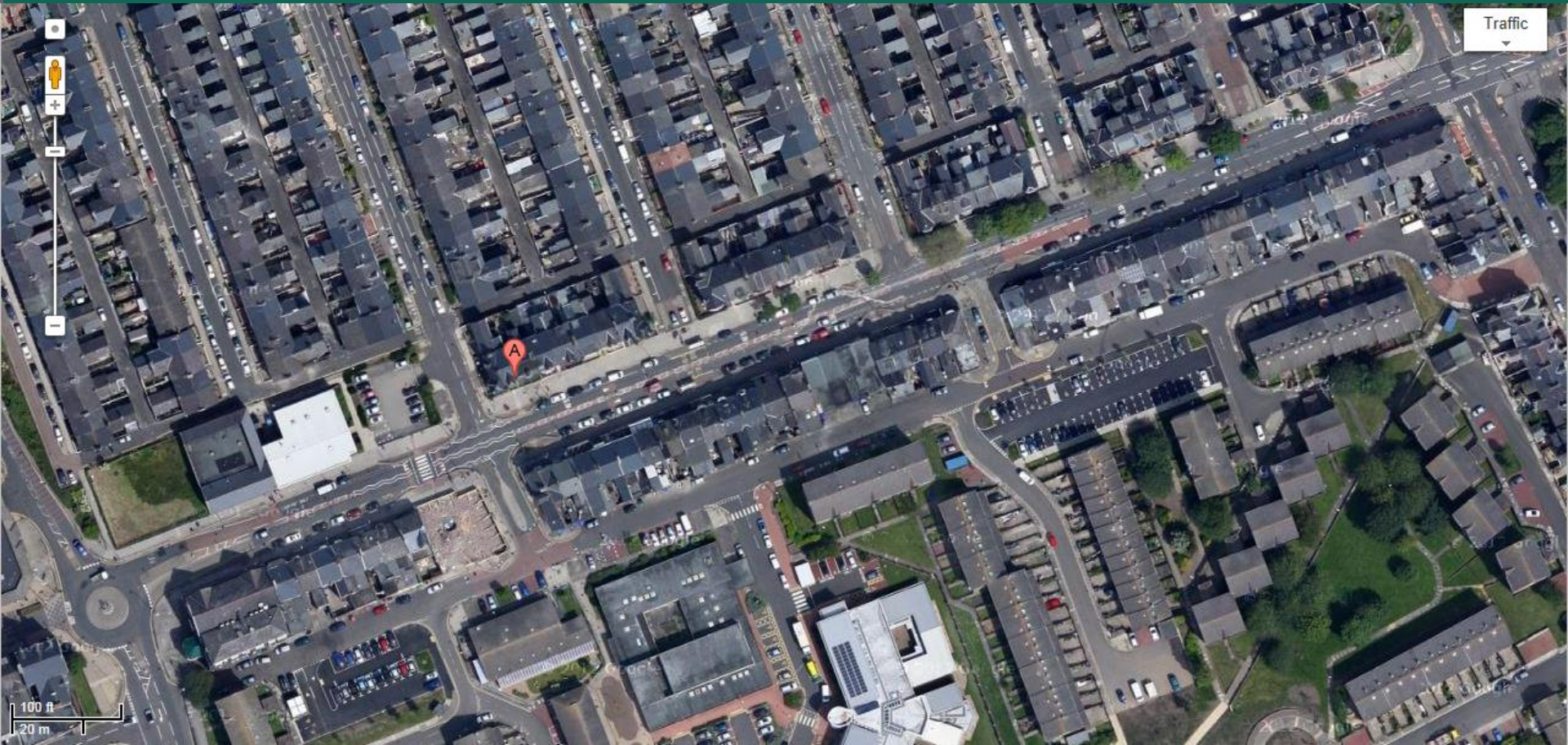




# LOCATION







Traffic  
▼

A

100 ft  
20 m



# PROJECT CONTEXT













Sunderland  
Tyne Tunnel  
Gateshead  
Pay and Display

Riverside  
Pay and Display

One Way







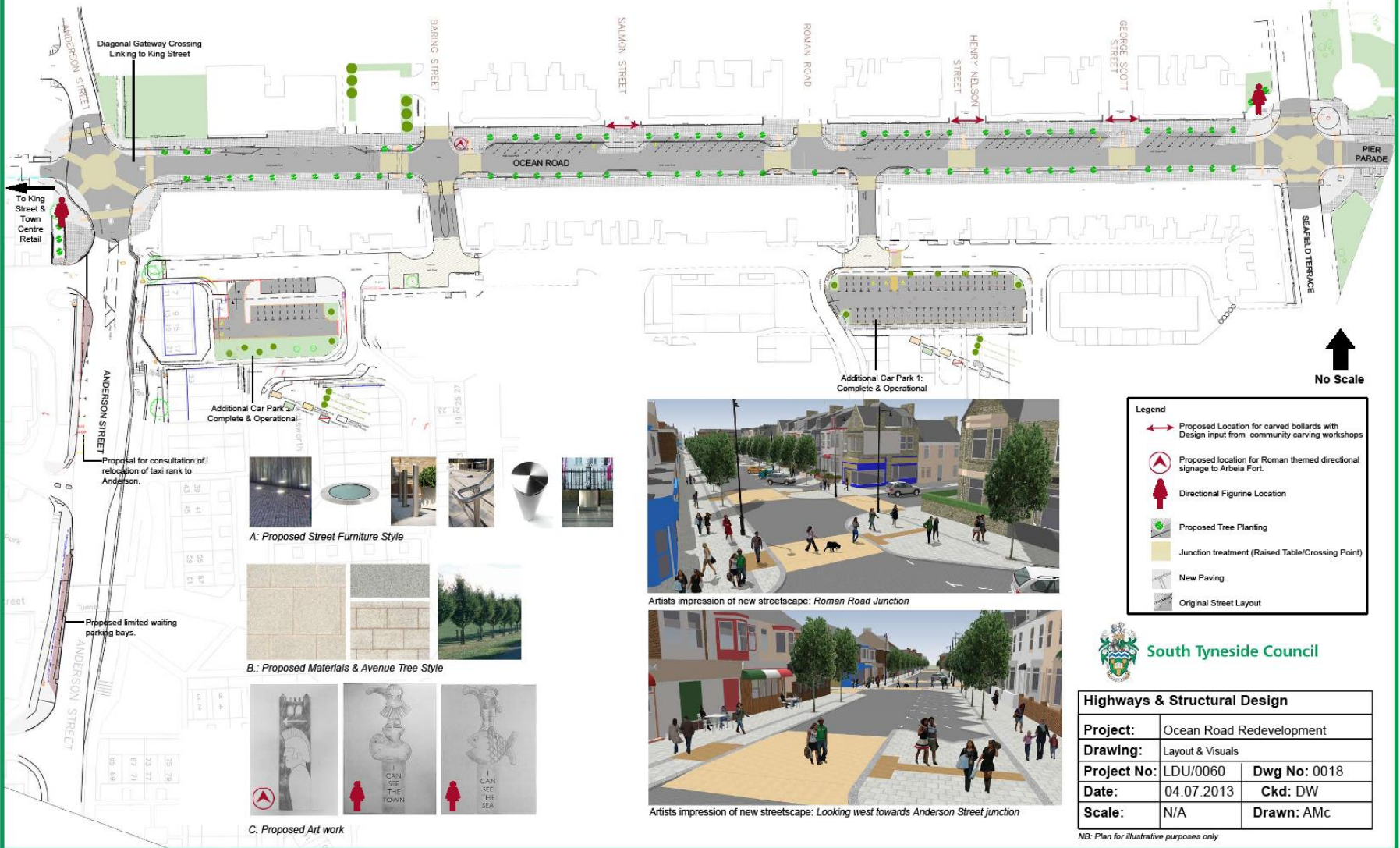


PROJECT AIMS



# Ocean Road Redevelopment

## Layout & Visuals





# Trees in Hard Landscapes A Guide for Delivery



Trees & Design  
Action Group



## Financial support

TDAG gratefully acknowledges financial support from:



ARUP

ATKINS



Bennetts Associates  
Architects

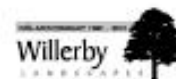


Brookfield

CAPITA



SUPPORTED BY  
MAYOR OF LONDON



# TREE CHOICE



*Carpinus  
betulus  
'Frans  
Fontaine'*





# TREE PLANTING SYSTEMS



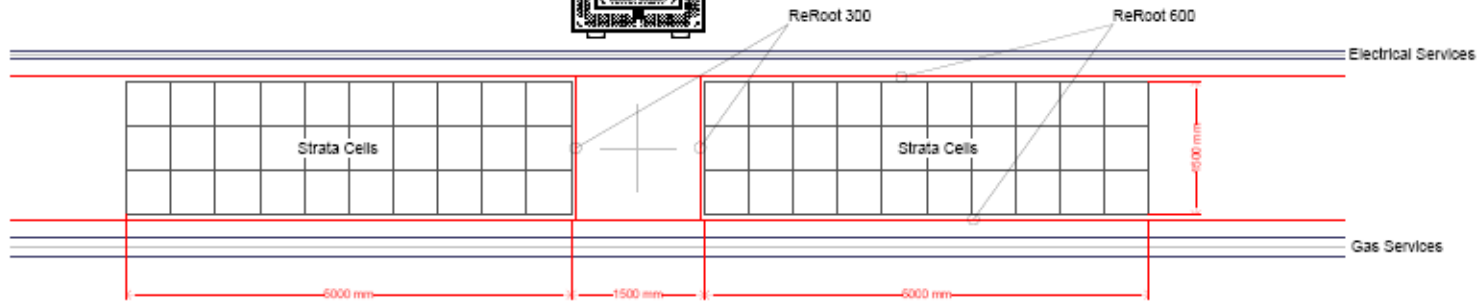
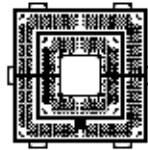
- **RAFT SYSTEM**
- **CRATE SYSTEM**
- **STRUCTURAL SOIL**



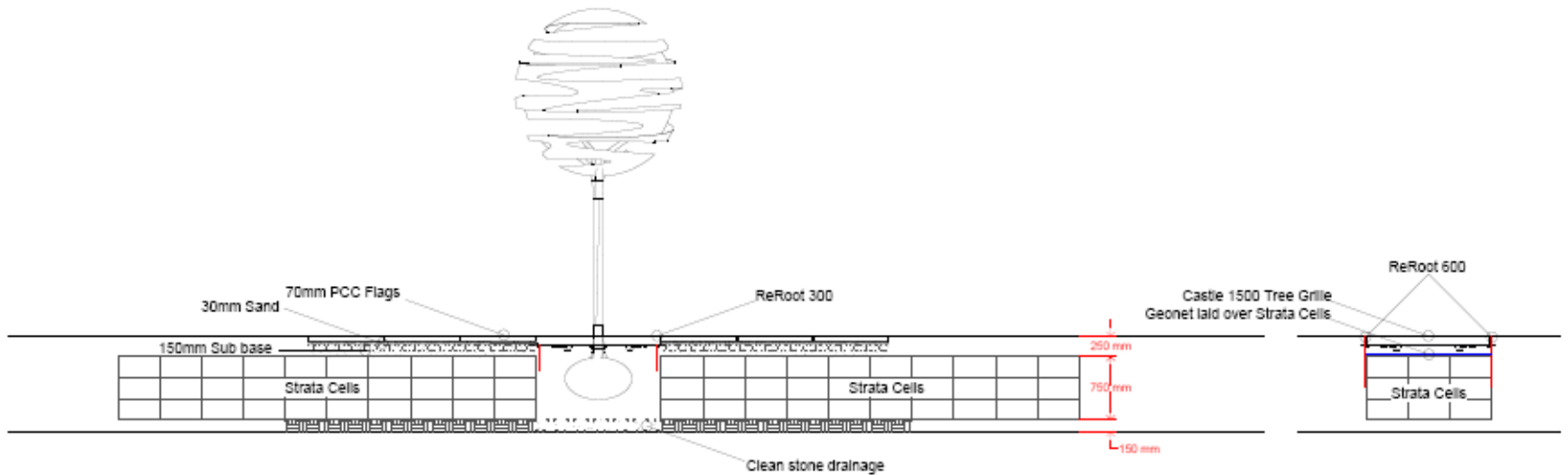




Castle 1500 Tree Grille



Plan 1:50



Section 1:50

Typical Section 1:50

**Greenleaf**

GreenBlue Urban Ltd,  
Haywood Way, Haslings,  
England, TN35 4PL  
greenleaf.co.uk  
Sales and Service: +44(0)1424  
717797

*lingard styles*

landscape architects urban designers environmental consultants

9 College Hill,  
Shrewsbury, Shropshire, SY1 1Z  
01743 293061.  
The Studio, Farm Lodge  
Welshpool, Powys, SY21 8HU  
01743 243602

Project Title:

Ocean Road, South Shields.

Client:

South Tyneside Council.



**South Tyneside Council**

Sheet Title:  
SHEET 1 OF 1

Project No:

2782 11 13 05 01

Scale:

1:50 @ A3

Drawn by:

HF

Checked by:

JD

**CRATE SYSTEM**

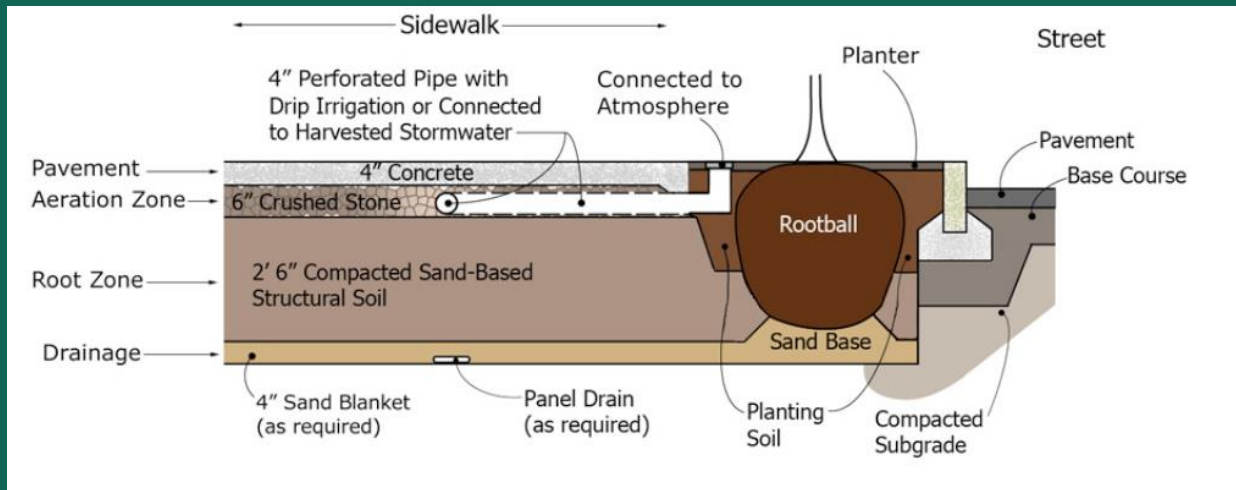








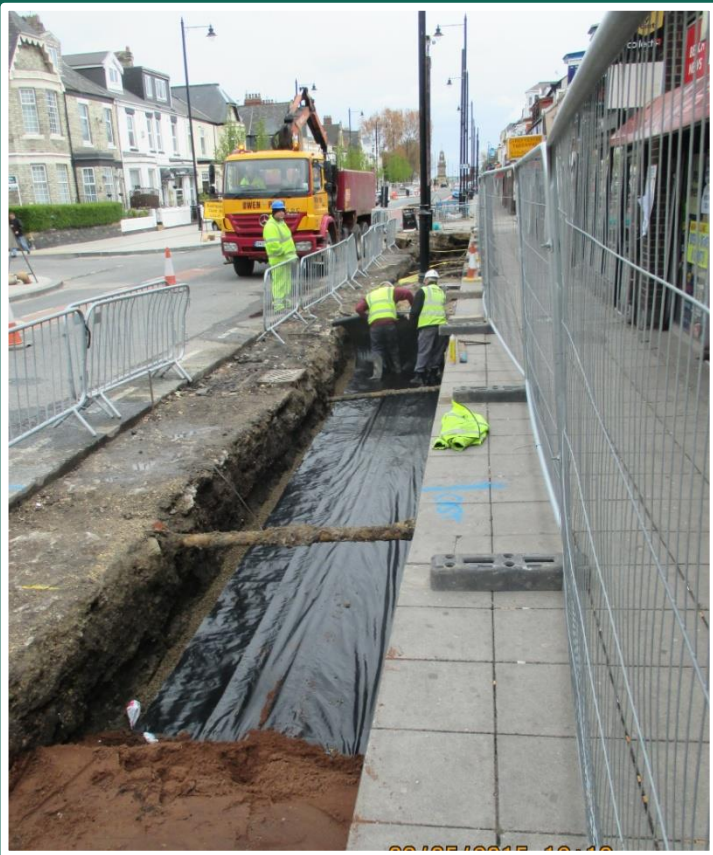




# STRUCTURAL SOIL













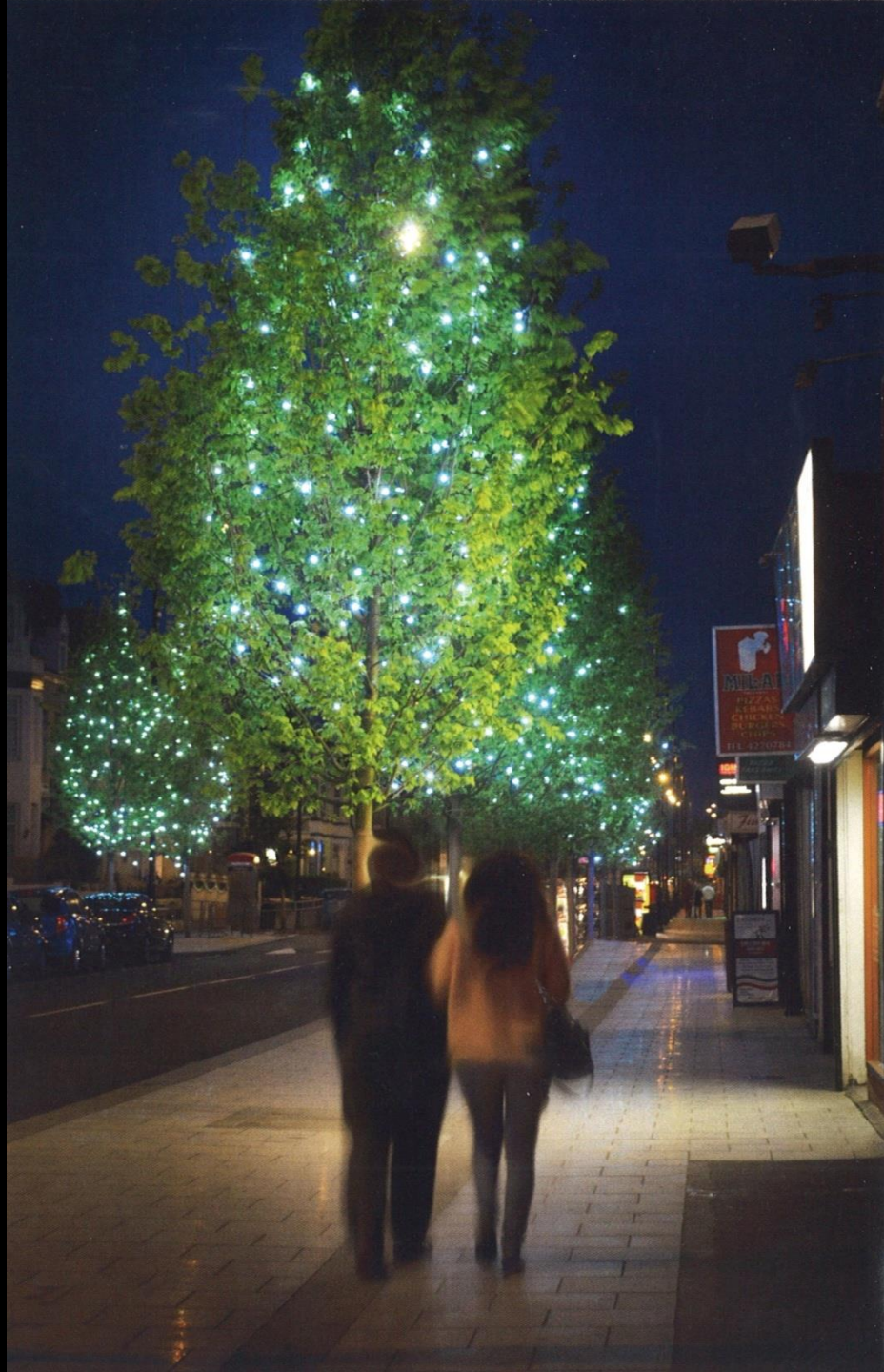


**LIGHTING**















14/05/2014 11:57





Sunderland  
Tyneside  
Gateshead  
Pay and Display

Riverside  
Pay and Display

One-way street



























# Trees & Design Action Group

(Join us, it's free!)

[www.tdag.org.uk](http://www.tdag.org.uk)

(Follow us on twitter)

[@TDAG\\_TalkTree](https://twitter.com/TDAG_TalkTree)

(Contacting Allison)

[allison.macleod@southtyneside.gov.uk](mailto:allison.macleod@southtyneside.gov.uk)