

# Trees, Planning and Development in Scotland

ALL IMHGES  
SHOULD BE  
PROPERLY  
ATTRIBUTED

\OUTREACH \ OUTPUT \ OUTCOME \

**Brian Mark Evans**

Professor of Urbanism & Landscape

GLASGOW  
URBAN LAB  
THE GLASGOW  
SCHOOL OF ARCHITECTURE

Geneva UN Charter  
Centre of Excellence  
SMART SUSTAINABLE CITIES



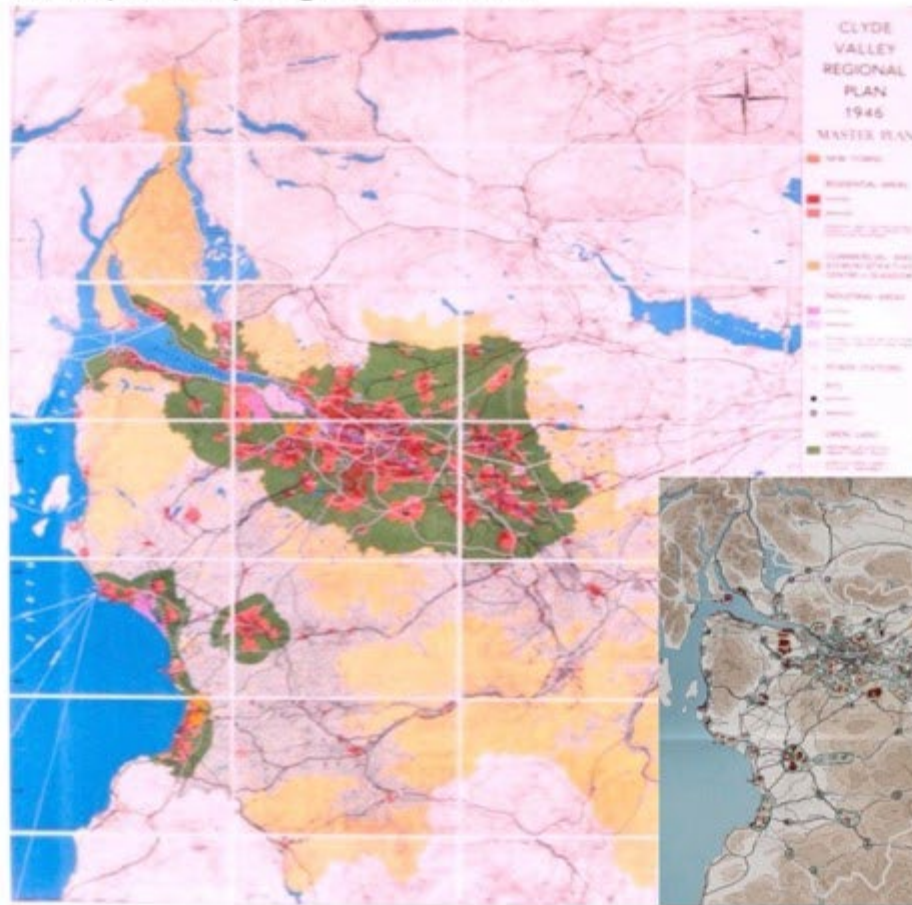
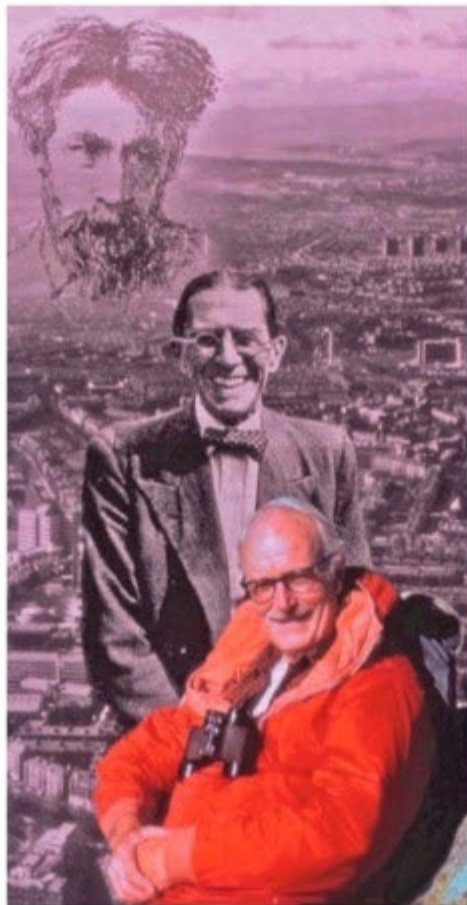
**UNECE**

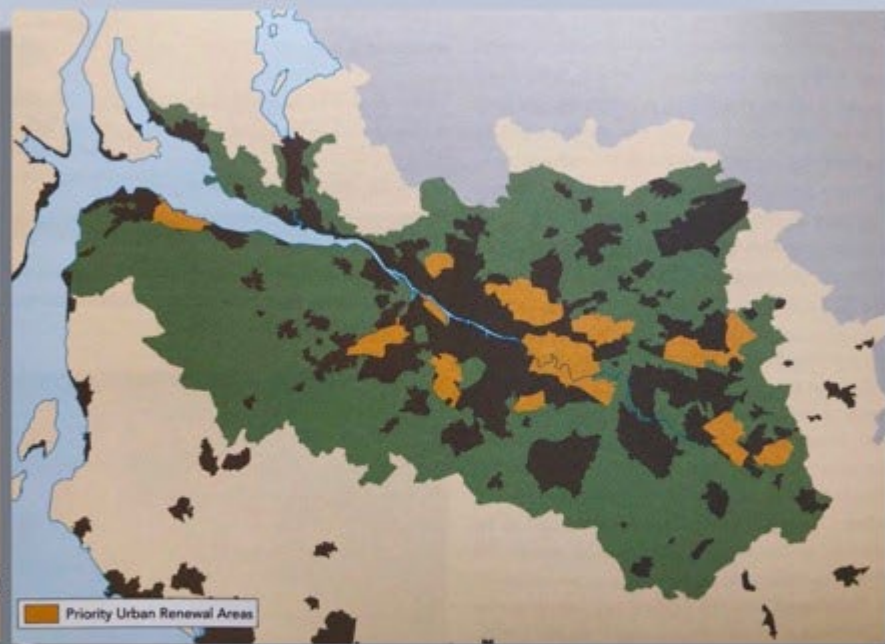
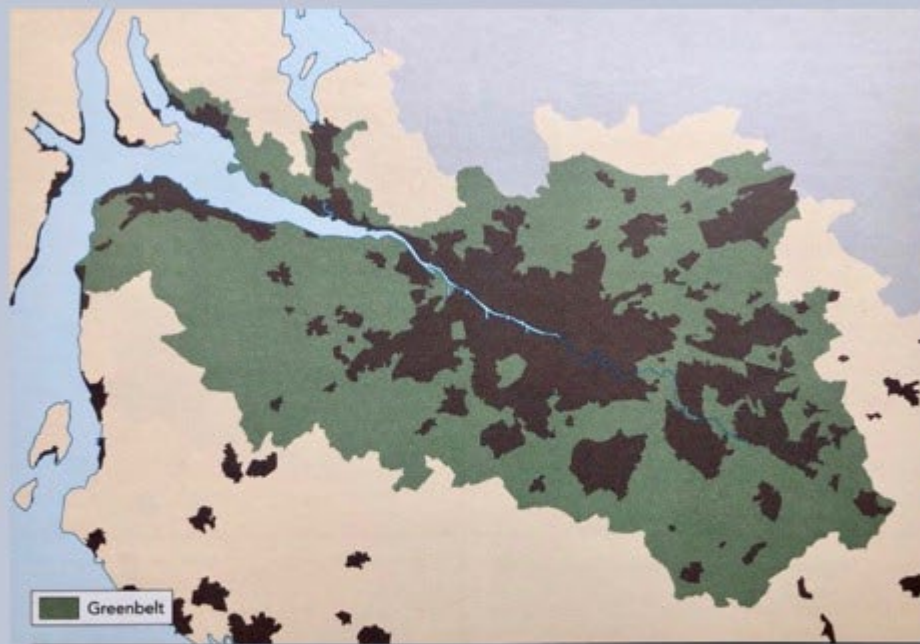
**THE LAND**

**THE PEOPLE**

**THE CITY**

# The Clyde Valley Regional Plan 1946





STRATHCLYDE  
STRUCTURE  
PLAN 1995



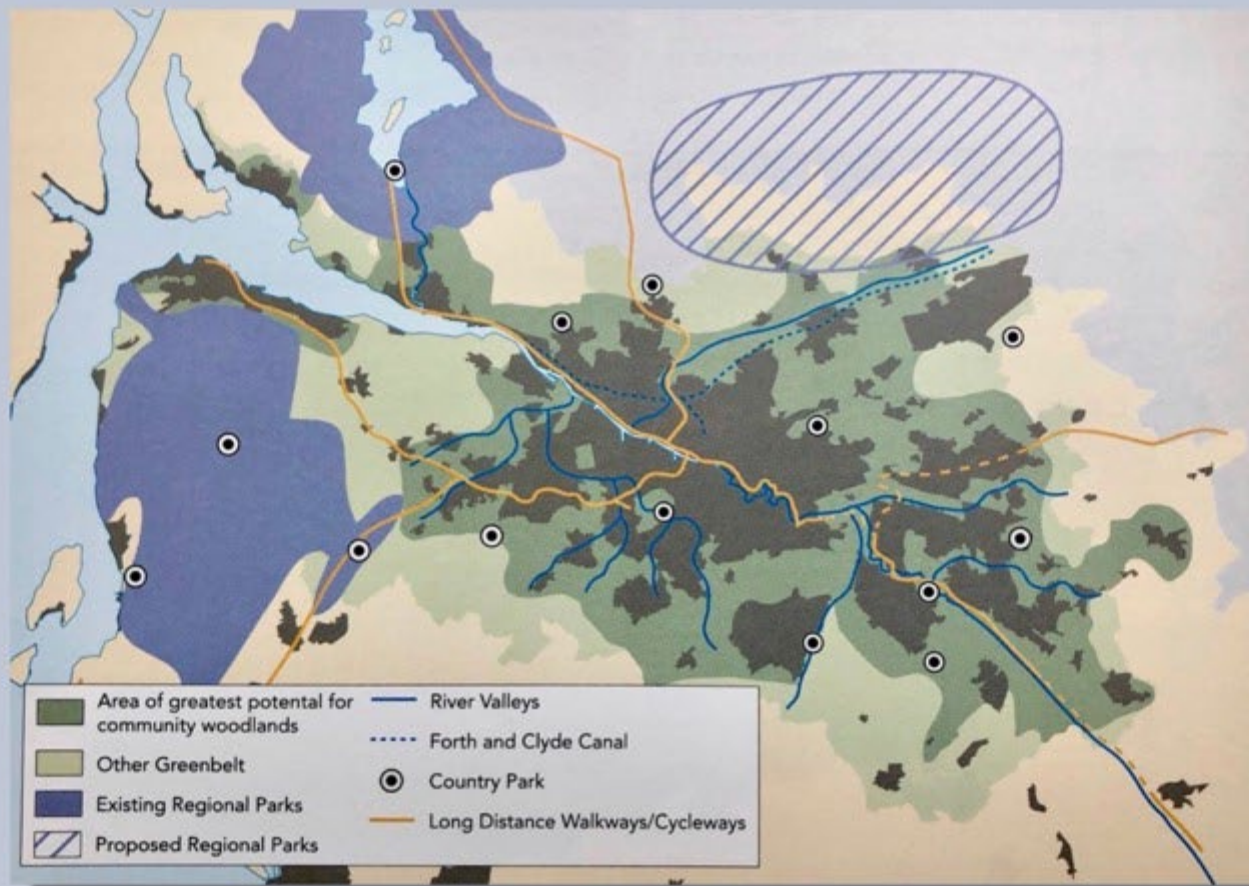
## REENING THE CONURBATION

STRATHCLYDE  
STRUCTURE  
PLAN 1995

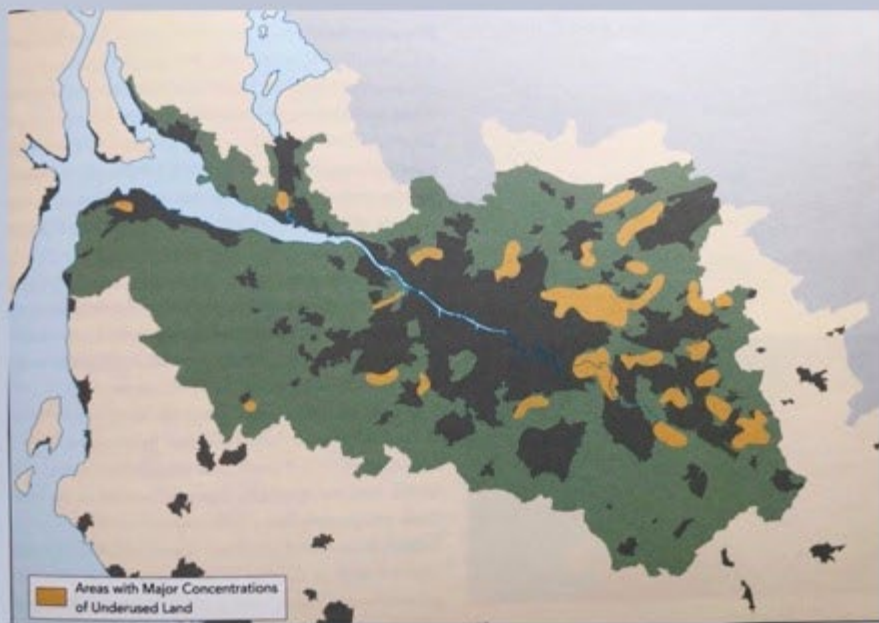
### **GREENING THE CONURBATION**

#### **GB 3**

*The Regional Development Strategy requires the Greening of the Conurbation, through integrated environmental projects to improve the Greenbelt, and related urban corridors, as shown on the Key Diagram inset, and amplified in Schedule 2.*



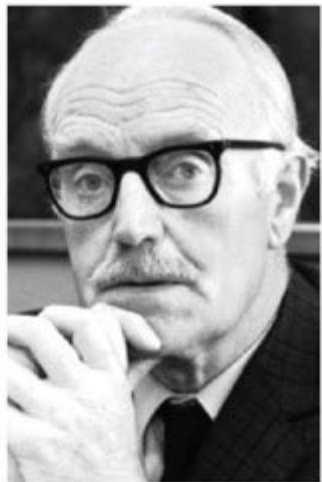
STRATHCLYDE  
STRUCTURE  
PLAN 1995



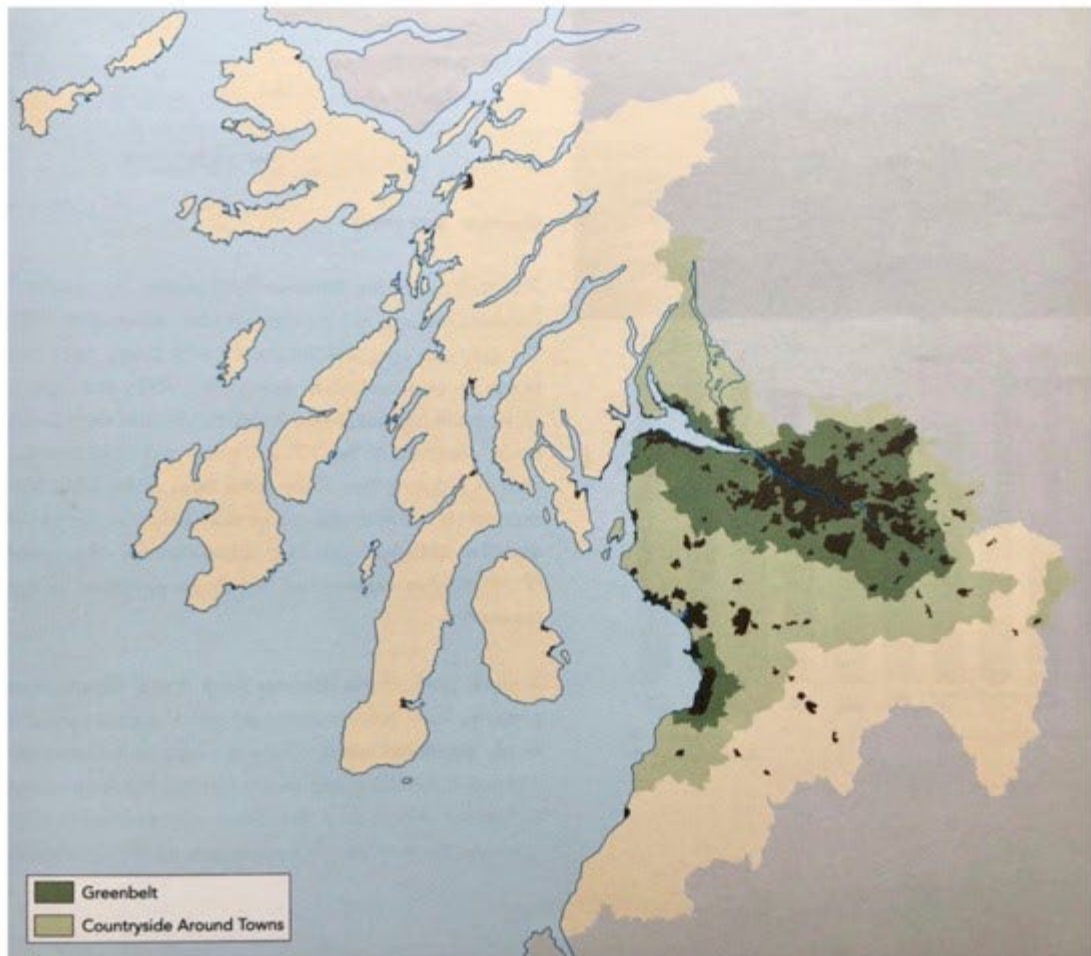
STRATHCLYDE  
STRUCTURE  
PLAN 1995



Patrick Geddes



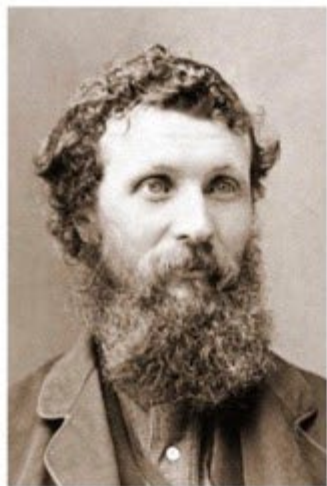
Robert Grieve



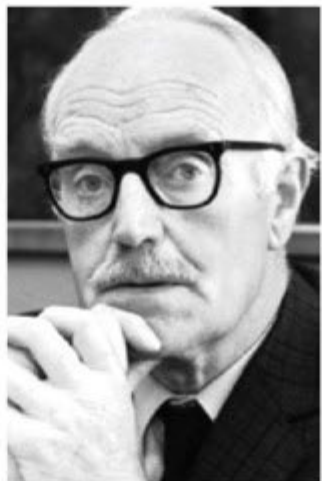




Patrick Geddes



John Muir



Robert Grieve



Ian McHarg

◆ Gordon Cullen

Ed Bacon ◆



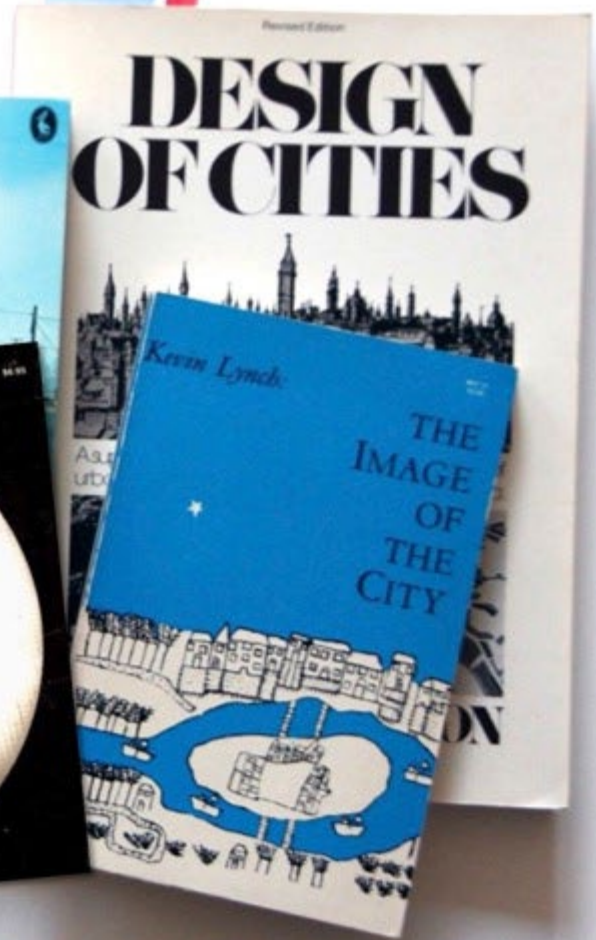
◆  
Ian McHarg

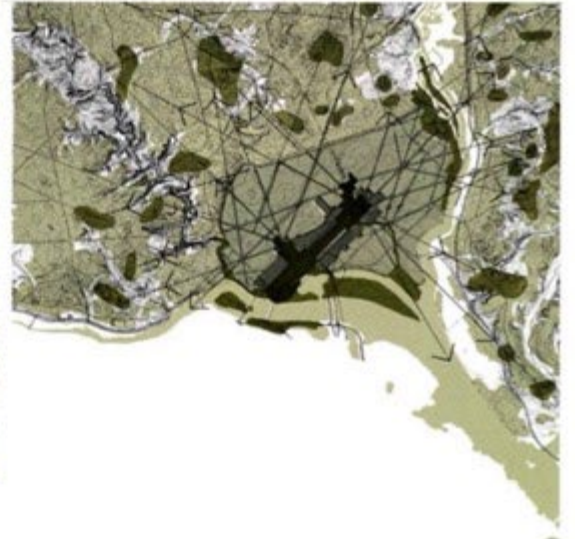
◆  
Jane Jacobs

◆  
Kevin Lynch



Grady Clay and Peter L. Laurence





Design with Nature 1969



EXISTING LAND USE



GEOLOGIC SECTIONS



EXISTING VEGETATION



FOREST-ECOLOGICAL ASSOCIATIONS



HISTORICAL LANDMARKS



PHYSIOGRAPHIC FEATURES



EXISTING WILDLIFE HABITATS



FOREST-EXISTING QUALITY



TIDAL INUNDATION



GEOLOGIC FEATURES

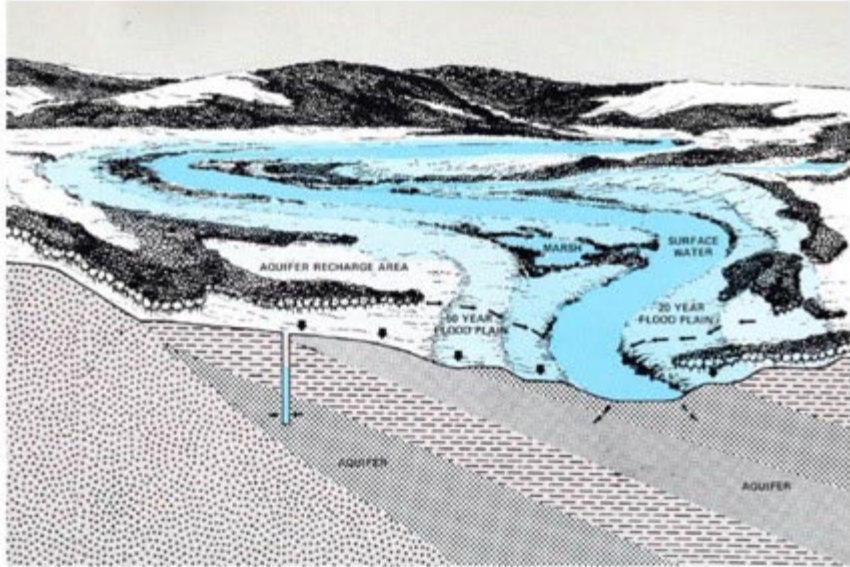


SOIL LIMITATIONS-FOUNDATION

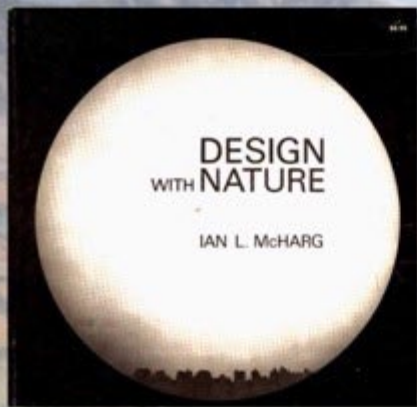


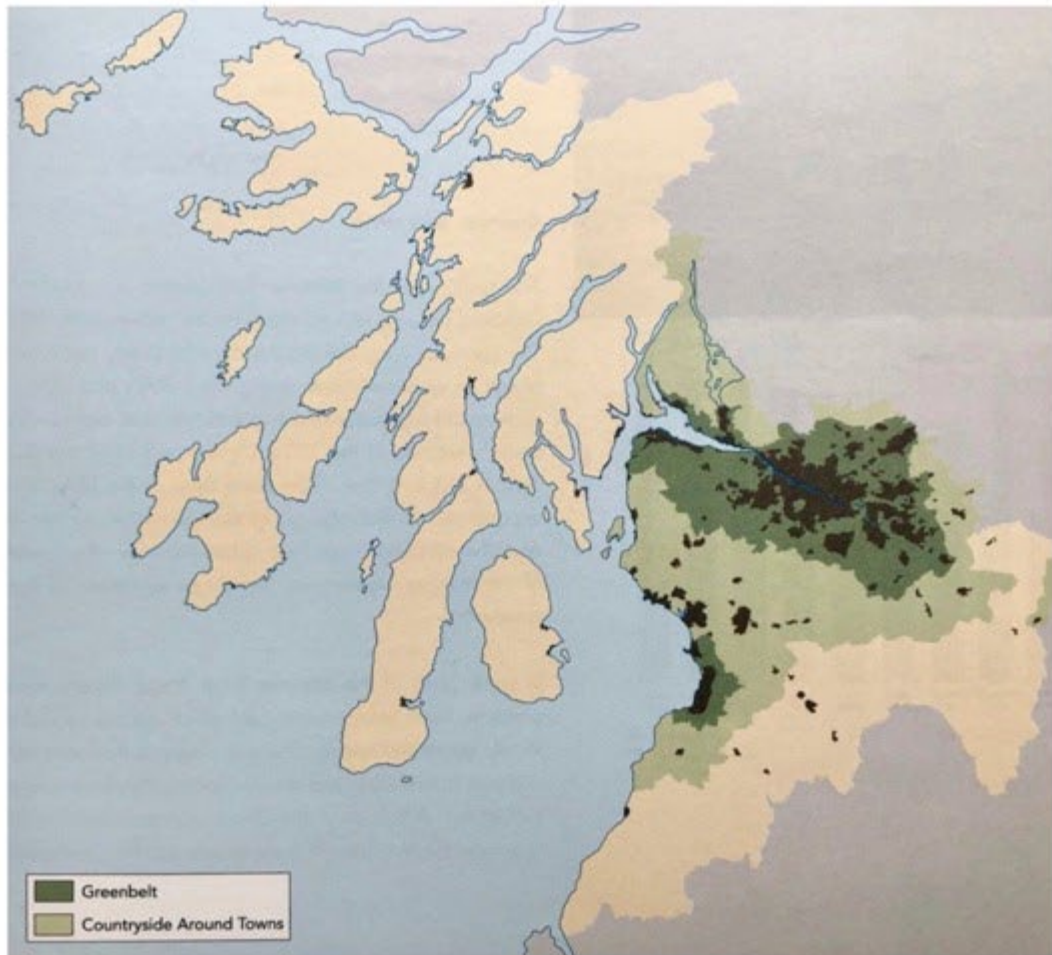
SOIL LIMITATIONS-WATER-TABLE

Design with Nature 1969



Design with Nature 1969





## THE CENTRAL SCOTLAND WOODLANDS PROJECT—A Plan for Land Use and Landscape Renewal

John Sheldon\*

### Introduction

Since the first clearance of tracts of forest for agriculture man has had an increasing influence on the landscape of the British Isles. Historic changes began in the Neolithic period, about 3,000 BC, when the countryside was heavily forested. It was then that man turned from hunting to agriculture and as a result began the process of burning and felling the forests for grazing land and arable farming. The process steadily increased until the commercial felling of forests began in the seventeenth century. The period of enclosure and later the restoration of some landscapes by the prosperous agricultural improvers of the eighteenth century, laid down much of the inherited landscape of today. Yet, change is still taking place as the increasing sophistication of agricultural technology has set new demands in a landscape which is often incompatible with modern farming developments, and the political and economic demands for efficient food production.

The landscape has constantly changed and what is seen today is an inherited reminder of man's influence on land use and management which, over many centuries, has been developed through social and economic demands, and technological advances. New demands however, are now being made of the landscape and the social values that are placed on it often conflict with agricultural progress. In 1974, this gave rise to the Countryside Commission's study, "New Agricultural Landscapes", which attempted to analyse the landscape changes in lowland England and how landscape improvement could take place in association with agricultural improvements.

In upland Britain, which is now the subject of similar studies, landscape change has also occurred although here the trees were lost at a very early stage and, with the introduction of sheep, and in Scotland, the establishment of deer forests and grouse moors, large tracts of upland have remained treeless and unchanged for many centuries. Only quite recently has commercial forestry become an important although still a relatively minor alternative land use in the uplands. Yet, new agricultural technology is now beginning to influence practical and economic ways of improving upland productivity. As a consequence, the arguments that are debated on the change in lowland landscapes, in the loss of hedgerows and woodlands, is now also being directed to the changes in the treeless upland landscape, as a result of new agricultural and forestry developments. In parallel to this has been the debate between agriculturists and foresters on the future use of hill land—whether it should be for food or timber, or a planned integration of both.

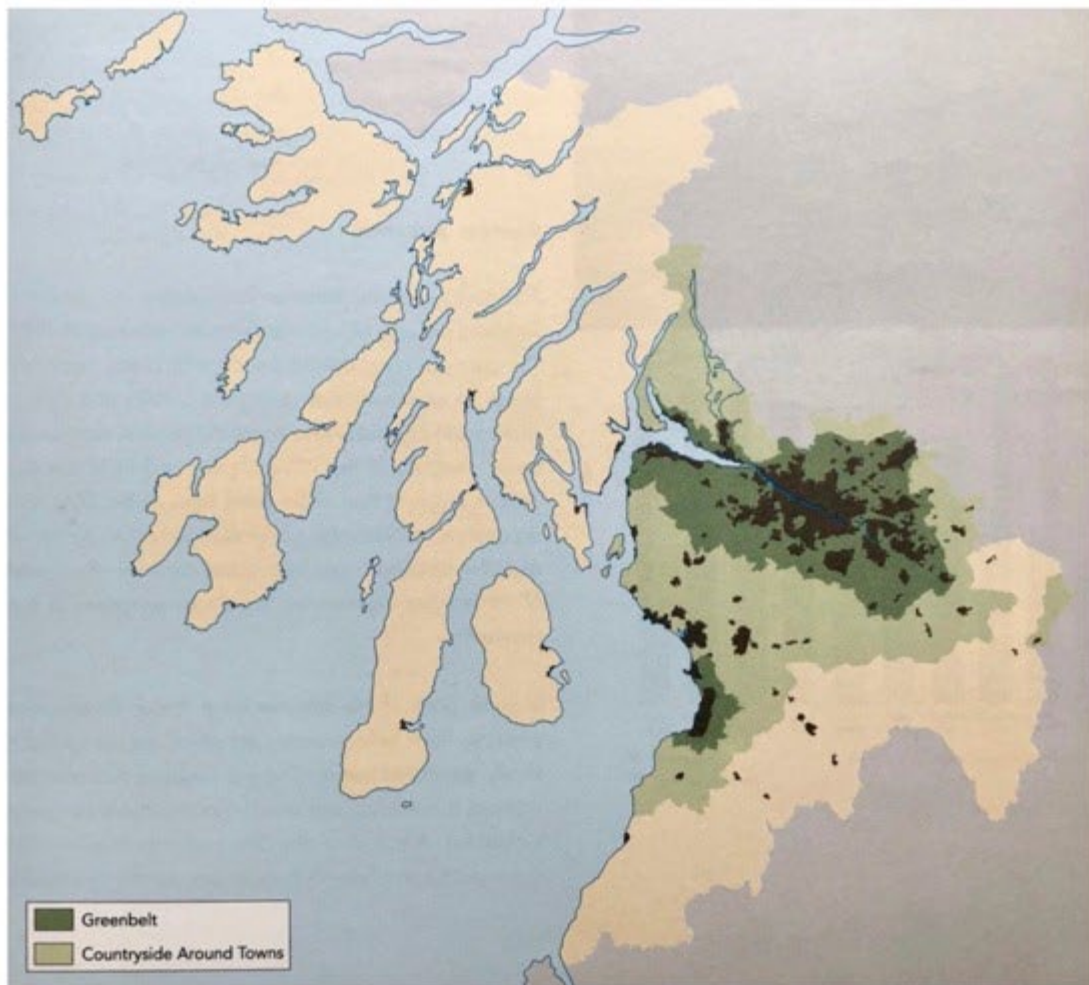
### The Central Scotland Uplands

In the central belt of Scotland, the upland moors between Glasgow and Edinburgh have suffered both land use and the landscape damage as a consequence of extreme conflicting economic interests. In turn, these have created circumstances which have neither encouraged agricultural investment or created the opportunities for significant commercial timber production.

The moorlands, from Falkirk southwards, rise to about 290 m, where they merge into the western foothills of the Pentlands, in West Lothian and Lanark. They are bleak, windswept and inhospitable, and represent an upland area where a diverse mineral

\*Dept of Physical Planning, Lothian Regional Council, 12 St Giles Street, Edinburgh, EH1 1TL.





Robert Steedman



Mark Turnbull





Glasgow Garden Festival 1988



### WATER & MARITIME

To include:  
 Themed restaurant  
 Tower  
 Maritime trade & exploration  
 Nautical exhibits  
 Water at work  
 Water displays  
 Plant collectors gardens  
 Boat trips



### PLANTS & FOOD

To include:  
 Themed cafe  
 Gardeners' bazaar  
 Horticultural displays  
 Agricultural displays  
 Allotment gardens  
 Demonstration gardens  
 Third World initiatives  
 Plantsmans' gardens



### RECREATION & SPORT

To include:  
 Themed restaurant  
 Themed cafe  
 Gardeners' bazaar  
 Home and gardens exhibits  
 Tenement gardens  
 City farm  
 Water sports display and learning area  
 Land-based sports display and learning area



### HEALTH & WELL-BEING

To include:  
 Themed cafe  
 Planet Earth  
 Plants and the Environment  
 Plants and medicine  
 Conservation  
 Health & fitness gardens  
 Gardens of Peace



### LANDSCAPE & SCENERY


To include:  
 Themed restaurant  
 Man and Landscape  
 Mountain and scree features  
 River and Lake features  
 Woodland and forestry  
 Heath and moorland  
 Lowland and meadows

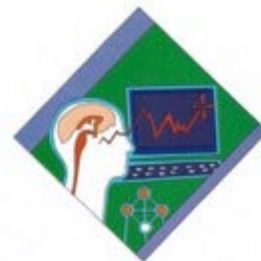


### SCIENCE & TECHNOLOGY

To include:  
 Leisure Facility  
 Themed restaurant  
 Milestones in Science  
 Innovative displays  
 Energy displays  
 Demonstration gardens  
 Hi-Technology

### LEGEND

-  Water & Maritime
-  Recreation & Sport
-  Landscape & Scenery
-  Plants & Food
-  Health & Well-Being
-  Science & Technology
-  History & Heritage Trail
-  Education & Culture Trail
-  Horticultural Trail
-  Additional Display Areas
-  Buildings
-  Pedestrian Circulation
-  External Pedestrian Access
-  Car Parking
-  Tram Route
-  Structure Planting
-  Matrix Planting
-  Formal Planting
-  Grass
-  Information
-  Toilets
-  Nursing Mothers
-  First Aid
-  Telephone
-  Wheelchair Hire
-  Play Area
-  Restaurant
-  Cafe
-  Shelter
-  Event Areas
-  Entrance
-  High Street
-  Garden Centre
-  Gardeners Bazaar
-  Tower
-  Craft Village
-  Leisure Facility
-  Thrill Ride





Glasgow Garden Festival 1988



Buchanan Street, Glasgow  
Gillespies LLP



St Andrew Square, Edinburgh  
Gillespies LLP



St Andrew Square, Edinburgh  
Gillespies LLP



# STRATEGIC DEVELOPMENT PLAN 2012

## Glasgow and the Clyde Valley Strategic Development Plan

May 2012





Diagram 18 Metropolitan Glasgow Strategic Drainage Plan: waste water treatment works catchments



Diagram 20 Spatial development priorities

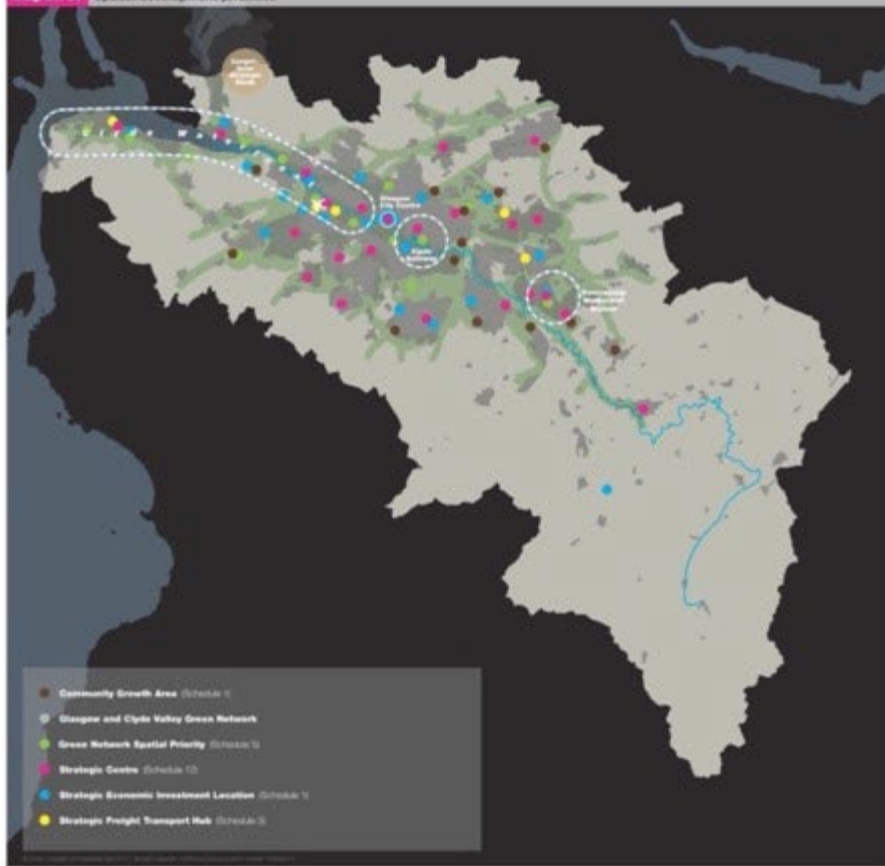


Diagram 18 Metropolitan Glasgow Strategic Drainage Plan: waste water treatment works catchments

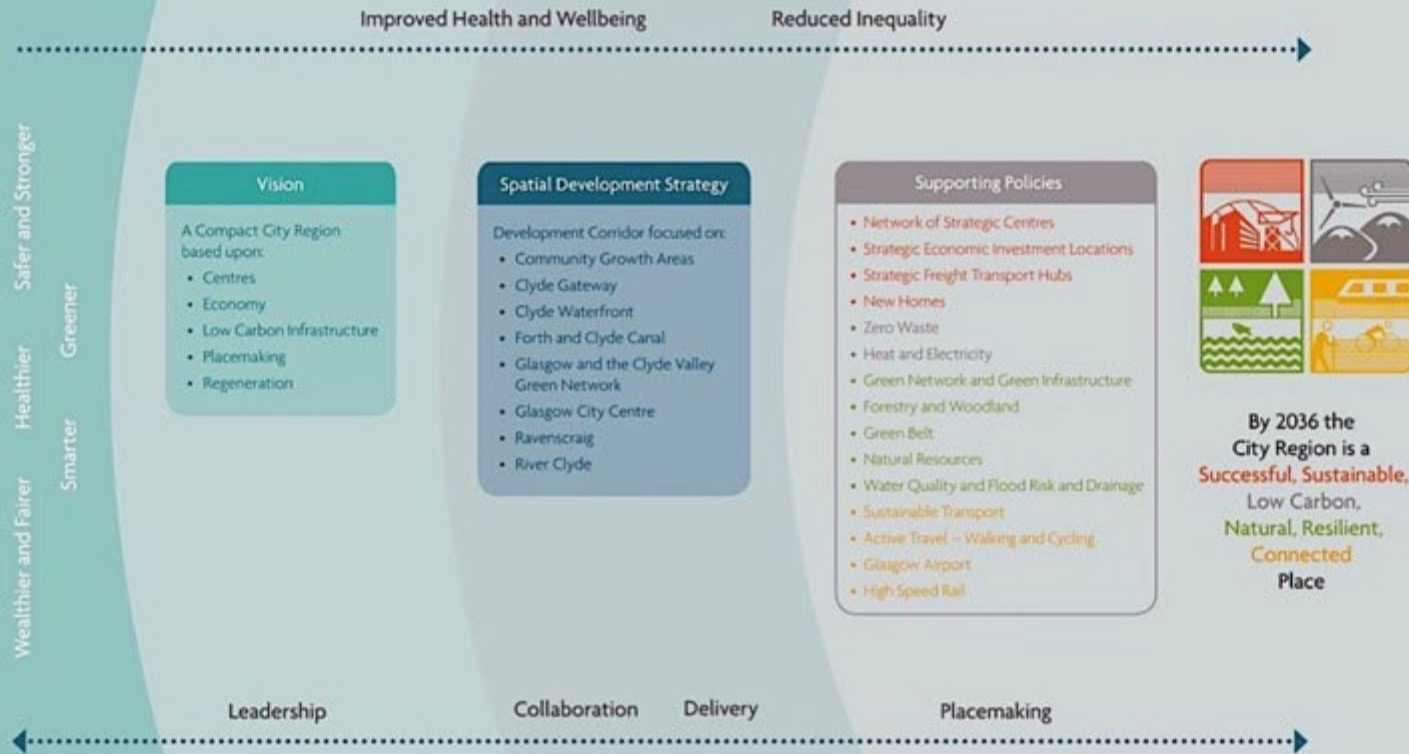


## 4 Spatial Development Strategy Introduction

Diagram 9 Spatial Vision and the Spatial Development Strategy

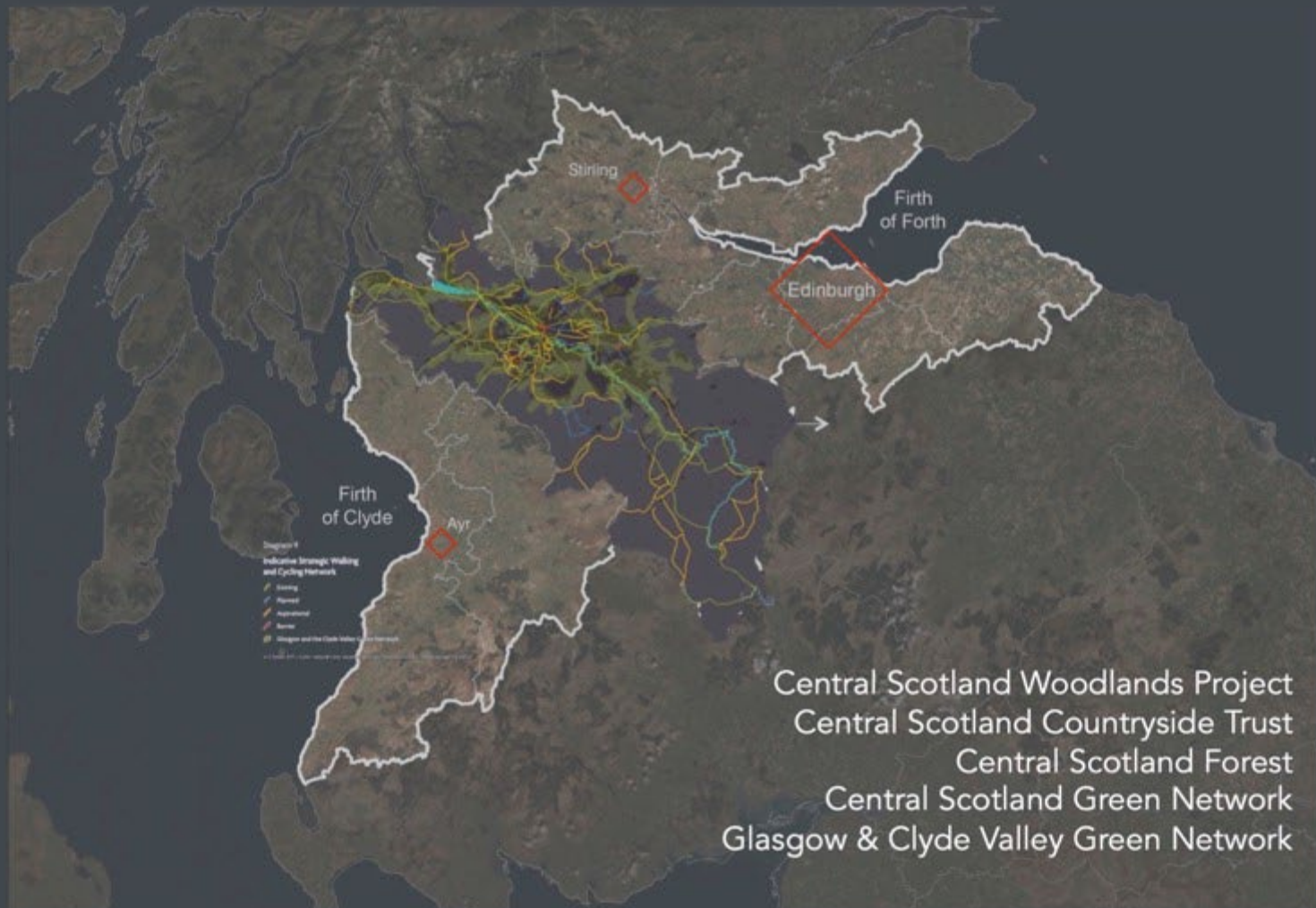
		Spatial Vision									
		Reduced Development Footprint	Higher Densities	Agglomeration	Regeneration and Renewal	Land-use and transport integration	Sustainable Locations	Green Infrastructure Potential	Low Carbon Energy Potential	Greening the Economy	Local Supply
Development Context	<b>Spatial Development Strategy</b>										
	Clyde Waterfront										
	Clyde Gateway										
	Glasgow City Centre										
	Ravenscraig										
	Green Network										
	Community Growth Areas										
	Collaboration										
	Strategic Economic Investment Locations										
	Glasgow International Airport										
Economic Frameworks	High Speed Rail										
	Sustainable Transport										
	Green Network Spatial Priorities										
	Forestry and Woodland										
	Green Belt										
	Windfarm Search Areas										
	Minerals Search Areas										
	Low Carbon Energy - Urban Retrofit										

# From Vision to Place



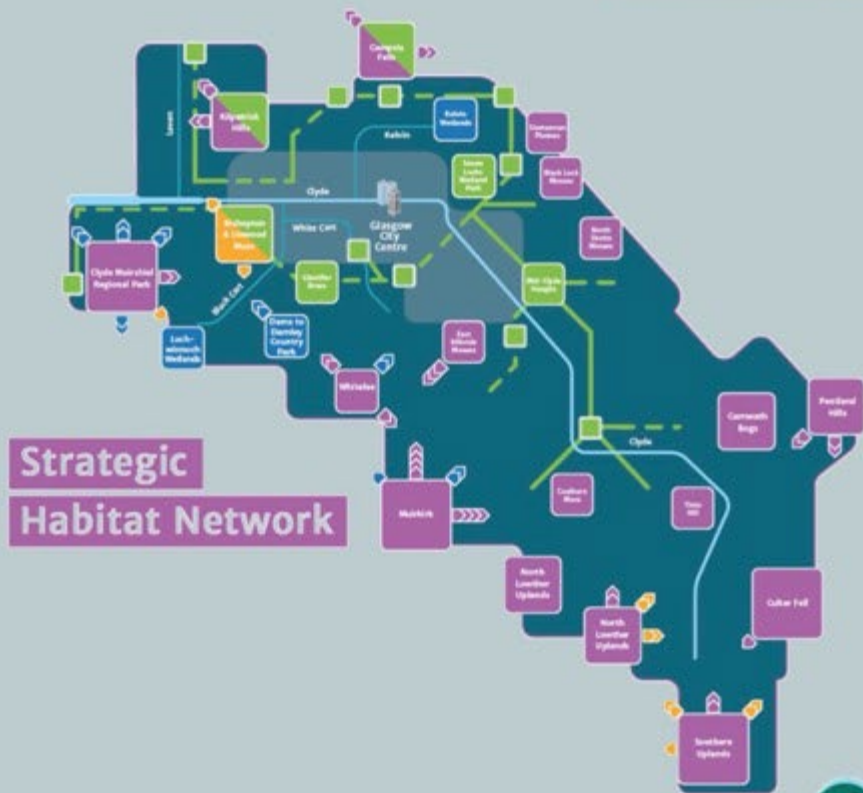


STRATEGIC  
DEVELOPMENT  
PLAN 2012

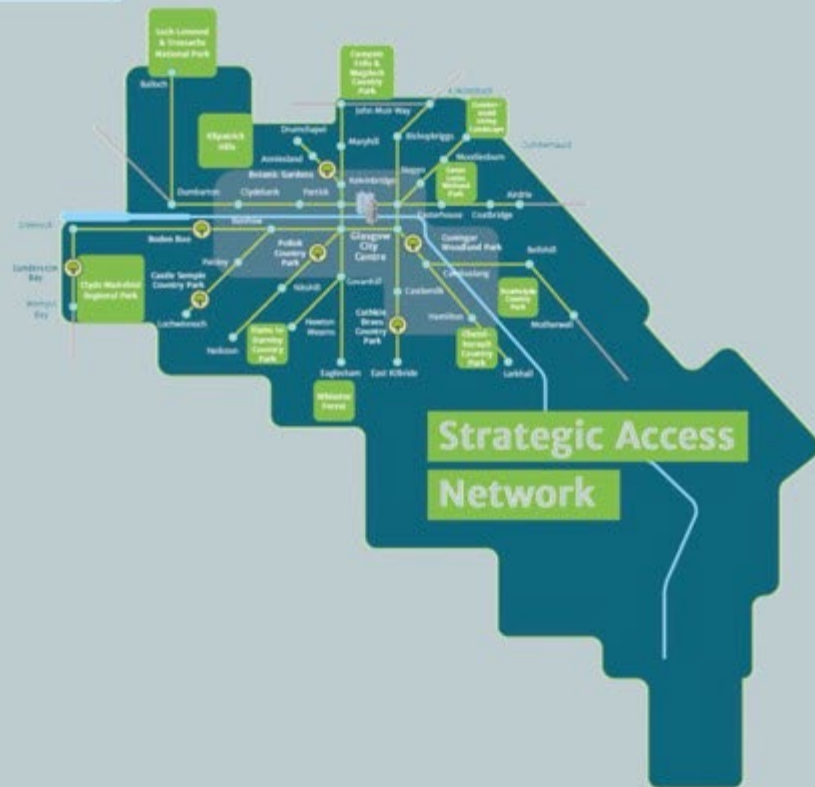


# Green Network

**The Blueprint** Making the Connections



**Strategic  
Habitat Network**



**Strategic Access  
Network**







An aerial photograph of a snowy landscape. The ground is covered in white snow, with long, dark shadows cast by trees and buildings. The shadows are cast from the upper left towards the lower right, indicating a low sun position. The trees are dark green or brown, and their shadows are very distinct against the white snow. The overall scene is bright and clear.

**Growing Awareness—  
How green consciousness can  
change perceptions and places**

Brian Evans & Sue Evans (editors)



# TOWARDS A NEW PARADIGM in LANDSCAPE and ENVIRONMENT

---

Landscape and physical environment of cities and regions today and tomorrow.

Five years of research: background of climate change, migration, health awareness and ever increasing urban intensification: reflect on the role and the benefits of landscapes and ecosystems in our city regions.

Understanding and reasoning the landscape  
Towards a new paradigm in landscape and environment.

## LEARNING from THOUGHT

### Green Paradigm

Porritt

### Green Infrastructure

Armour

### Wellness not Illness

Burns

### The Nature of Networks

Hughes

### Ecological Sequestration

Head

## LEARNING from PLACE

### Emscher Landscape Park

Schwarze-Rodrian

### South Pennines Watershed

Gray

### Philadelphia

Neukrug

### Scotland's Canals

Miller

### Dublin

Leahy

## LEARNING from ACTION

### Power of transformation

Verhagen

### New York High Line

Switkin

### London Olympic Park

Mattinson

### Cheonggyecheon River

Kim

### Ecological Waterscapes

Grau



The Kelpies  
Falkirk Greenspace

Queen Elizabeth Olympic Park  
Lea Valley



# Agenda 2030 :Transforming our World – the Sustainable Development Goals



**Article 2:** comprehensive, far-reaching and **people-centred** universal and transformative goals and targets

**Article 5:** **integrated and indivisible** to balance the three dimensions of sustainable development – economic, social and environmental



VANCOUVER

VLADIVOSTOK



North America



EU/EFTA



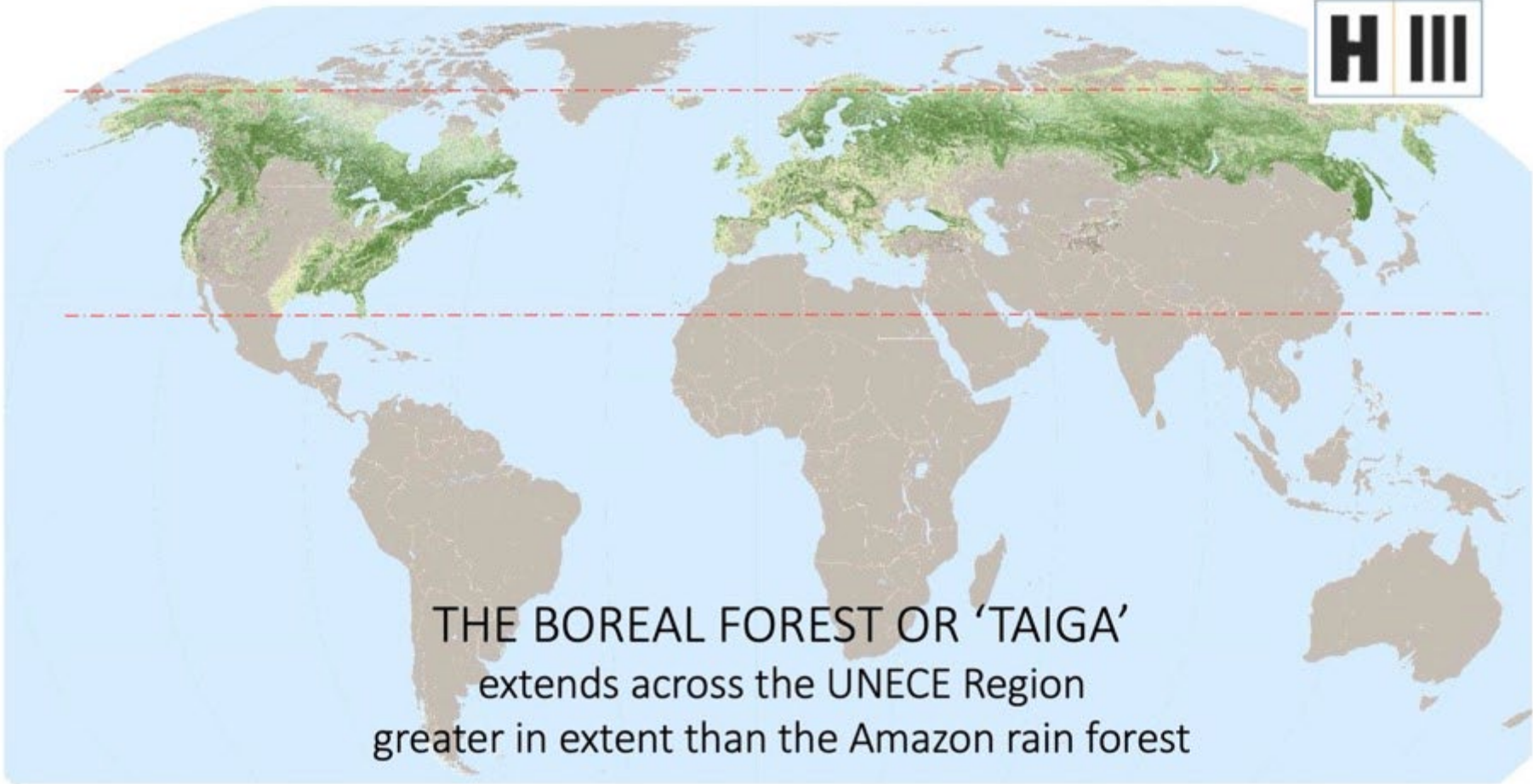
Eastern Europe Russia  
Caucasus & Central Asia



South East Europe

The Territories of the United Nations Economic Commission for Europe (UNECE)

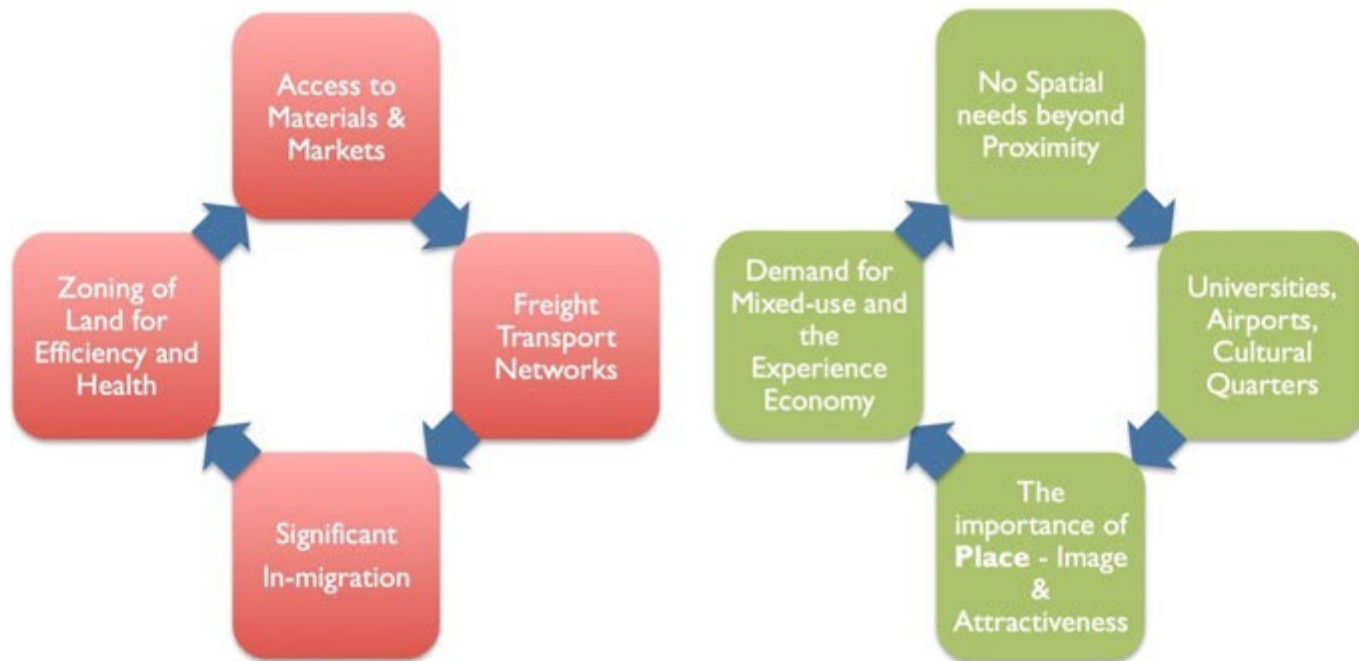


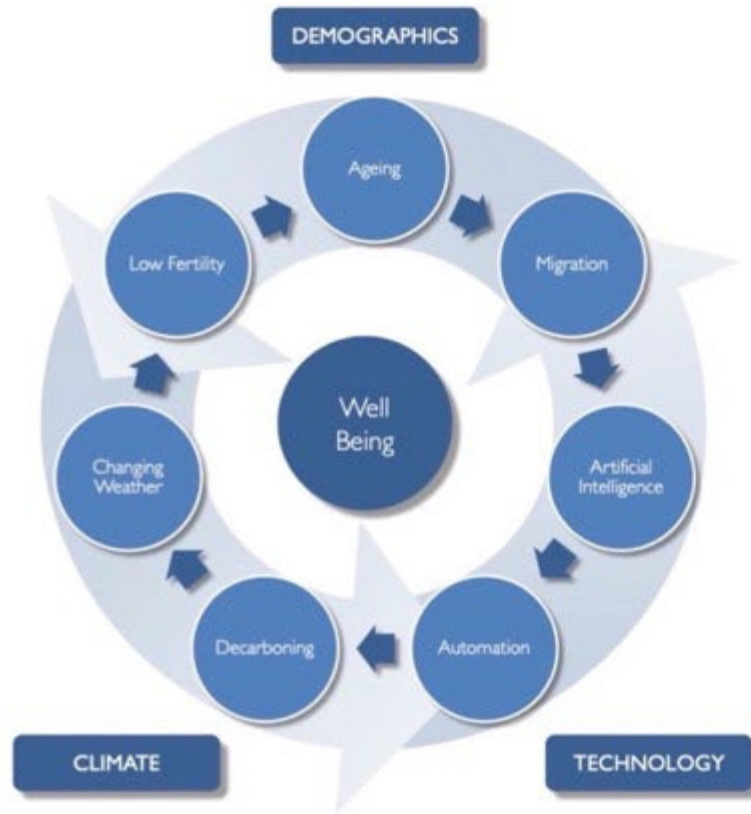
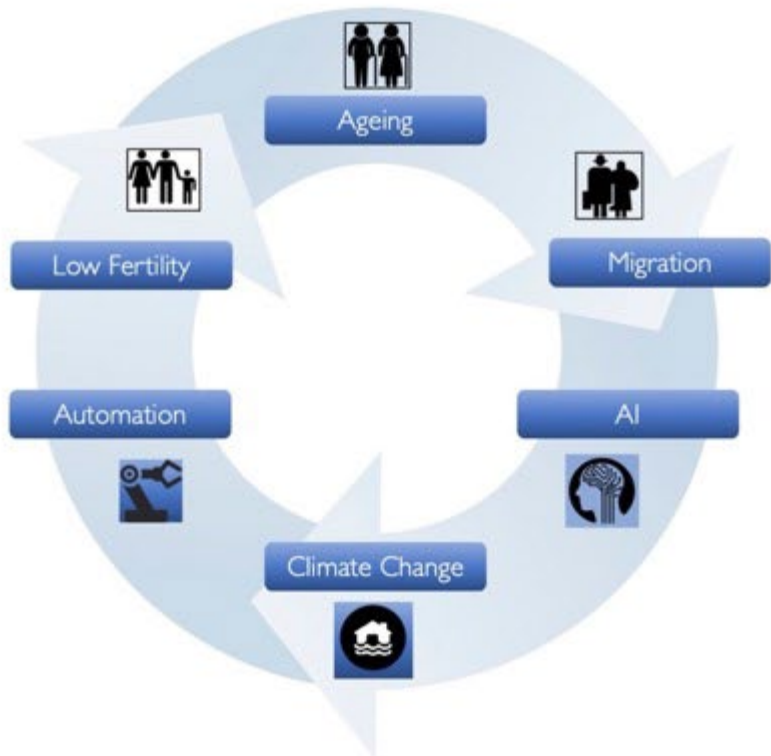


THE BOREAL FOREST OR 'TAIGA'  
extends across the UNECE Region  
greater in extent than the Amazon rain forest



# THE INDUSTRIAL CITY KNOWLEDGE CITY TRANSITION





# Place and Life in the UNECE: Regional Action Plan 2030



# Agenda 2030 : Transforming our World – the Sustainable Development Goals



**Article 2:** comprehensive, far-reaching and **people-centred** universal and transformative goals and targets

**Article 5:** **integrated and indivisible** to balance the three dimensions of sustainable development – economic, social and environmental



Source:  
Outcomes-focused  
Policy Making in Scotland  
[www.nationalperformance.gov.scot](http://www.nationalperformance.gov.scot)



Source:  
Glasgow's Climate Plan  
Response to the climate & ecological emergency  
[www.glasgow.gov.uk](http://www.glasgow.gov.uk)



Place Commission\Glasgow  
City Urbanist\Glasgow

The SDGs enable **vertical** and **horizontal** integration

2016



2018



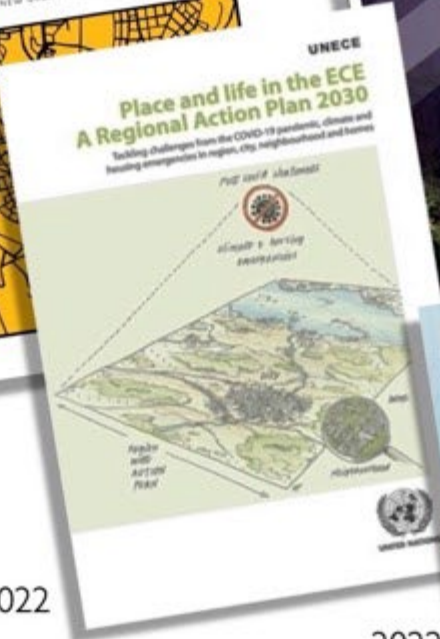
2022



2023

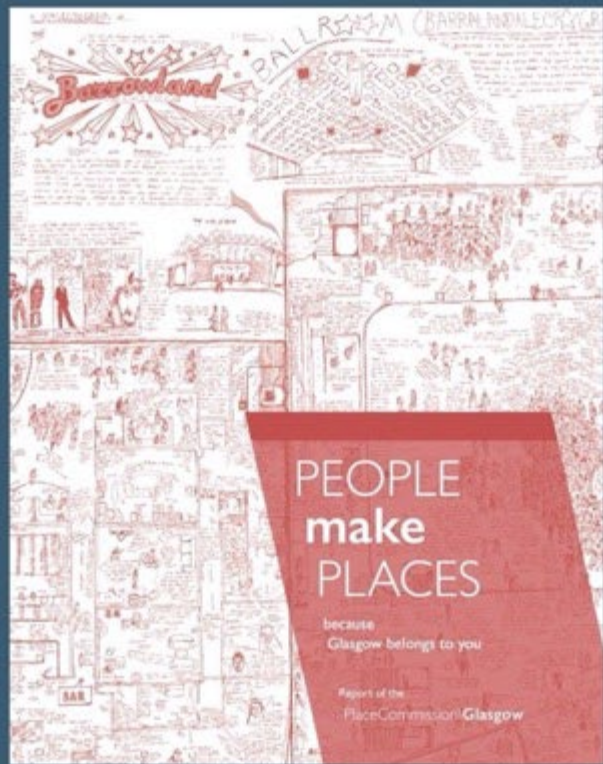


2022



2022





# PEOPLE make PLACES

Report of the  
Place Commission \bGlasgow

## 2.

# What we mean when we talk about place



Place is one of the most multi-layered and multi-purpose words in our language.”

ALESSANDRO DELL'ORTO

## The Ubiquity of Place

Place is everywhere, places are all around us. Everywhere is some place. Place is a general construct, a concept that gives everywhere some qualities, some specificity whether cultural, social, environmental or economic. And these in turn connote other qualities – ceremonial, beautiful, tranquil, vibrant, community, busy, unloved places.

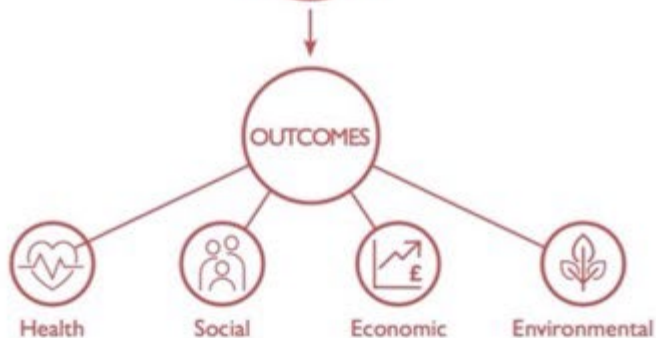


# PLACE – What do we mean?

The virtuous loop of place quality and value



Outcomes: 'big ticket' policy arenas



Source: Carmona (2019)

**Health outcomes**  
 Better physical health  
 Better mental health  
 Better general fitness  
 Greater daily comfort  
 Enhanced quality of life

**Social outcomes**  
 Fewer accidents  
 More social integration  
 Lower rates of crime  
 Better educational outcomes  
 Street-level viability and sociability  
 Civic pride  
 Inclusiveness  
 Enabling environments for older age  
 Enabling places for people with disabilities

**Economic outcomes**  
 Residential property uplift  
 Retail property uplift and reduced vacancy  
 More viable investments  
 Increased local tax base  
 Reduced public expenditure  
 Lower costs of living  
 Higher productivity

**Environmental outcomes**  
 Reduced energy consumption  
 Reduced carbon emissions  
 Adaptive reuse of buildings and spaces  
 Reduced pollution  
 Greater resilience  
 Ecological diversity

Source: Carmona (2019)

VALUE | QUALITY | ATTACHMENT

Place Commission \Glasgow  
 City Urbanist \Glasgow

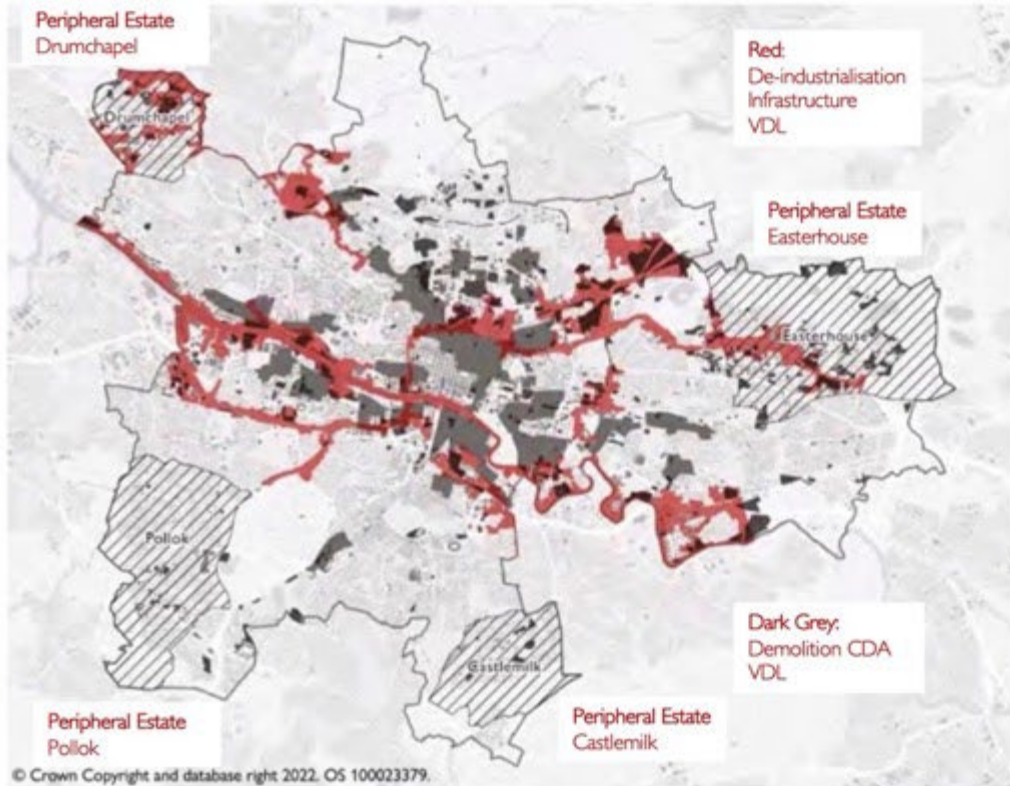
### 3.

## The four eras of modern Glasgow



The city of Glasgow fascinates and intrigues – its rise, fall and reinvention, its history and modernity, its reputation as 'Red Clydeside' and its powerful architecture all give the city a myth and a legend."

KEITH KINTREA & REBECCA MADGIN (2020)

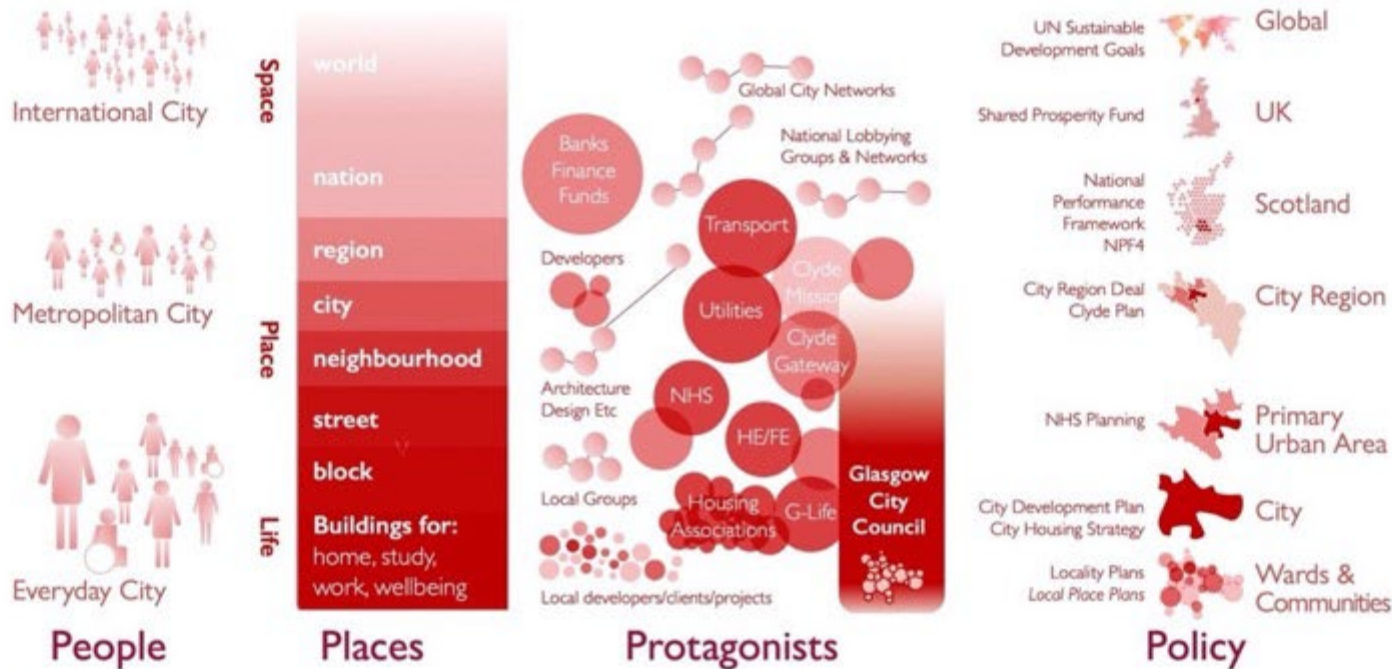


Source:  
Glasgow City Council

The map shows the aggregate effect of motorway construction, demolition from comprehensive development areas and the vacant and derelict land from deindustrialisation.

# 4.

## Investigations in place\ Enquiry & Reflection – a Place Ecosystem?



“Glasgow is at its most alluring, when it dreams of being a better version of itself.” RORY OLCAYTO

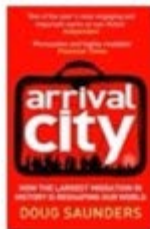
Place Commission\Glasgow  
City Urbanist\Glasgow

# 5. The Cities of Glasgow – looking through different lenses

## International

A reputation based on:

- ✓ Culture
- ✓ Sport
- ✓ Creativity
- ✓ Diversity
- ✓ Living



“Scotland without Glasgow ...would have no worldly dimension.”

“Its very important for cities all around the world to reinvent themselves, and Glasgow is a good example of that” ZAHA HADID

## Metropolitan

The Bigness of Glasgow

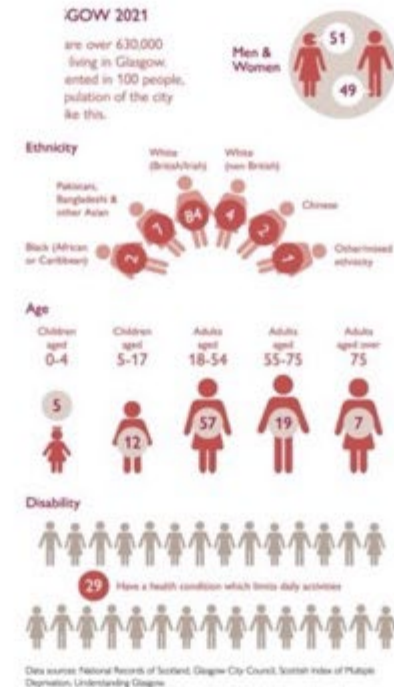
### Glasgow Primary Urban Area

Glasgow City Council  
East Dunbartonshire Council  
East Renfrewshire Council  
Renfrewshire Council

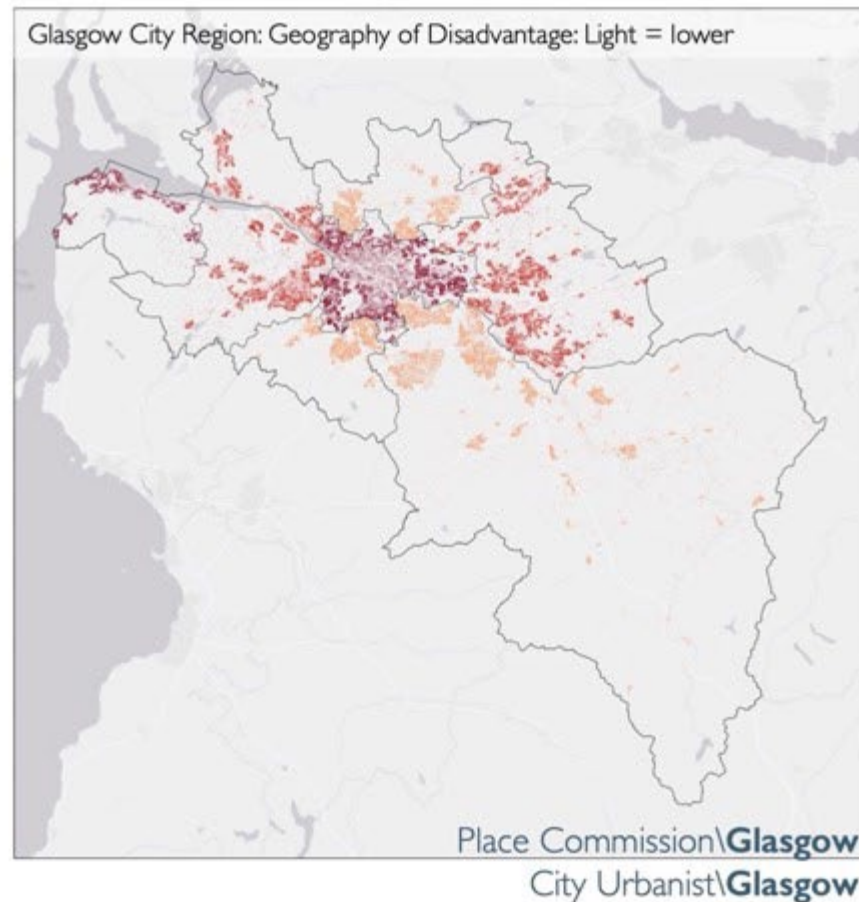
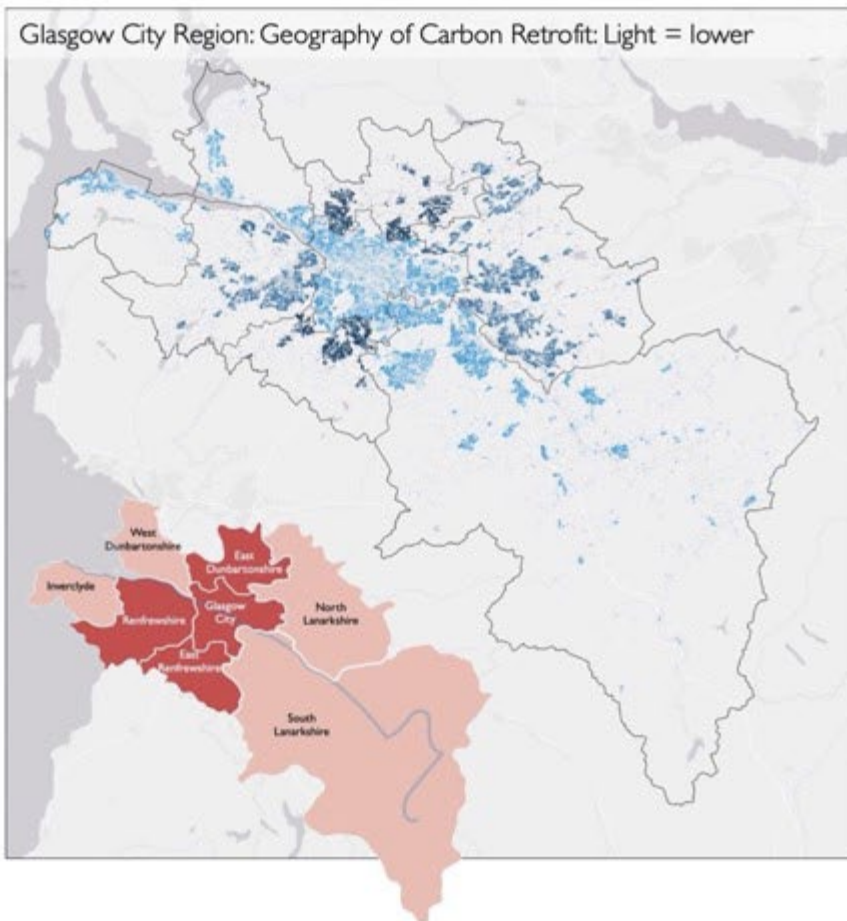


## Everyday

The Sum of Small Things



# The Cities of Glasgow – Issues of Metropolitaneity





# The PLACES of Glasgow



## 1 \AIaR\

Artists in Residence is a city-wide project to bring engagement with the arts close to communities across each of the 23 wards in Glasgow.

**Place Credentials:** Community Engagement, Community Empowerment, Public Enterprise, Inspirational Intent, Education



## 2 \After the Pandemic\

After the Pandemic uses creativity and community to rethink our environments, reimagine our cities, and redesign our communities to be greener, more vibrant, and more resilient.

**Place Credentials:** Community Engagement, Community Activation, Climate Action, Partnership, Inspirational Intent



## 3 \Bell Street Stables\

Bell Street Stables is a positive example of how a historic industrial building can be restored for modern use.

**Place Credentials:** Excellent Design, Public Enterprise, Climate Action, Procurement



## 4 \CCI\

The Centre for Civic Innovation (CCI) is a citizen-centred design team within Glasgow City Council responsible for establishing a design-led approach to the understanding of societal shifts and civic experience within the city.

**Place Credentials:** Community Engagement, Community Empowerment, Public Enterprise, Excellent Design, co-creation, Education



## 5 \Clyde Gateway\

Clyde Gateway is an urban regeneration Company established to deliver significant social, economic, and physical change across East Glasgow and South Lanarkshire.

**Place Credentials:** Community Engagement, Excellent Design, Public Enterprise, Governance, Partnership, Procurement, Delivery, Longevity



## 6 \Clyde in the Classroom\

Clyde in the Classroom is a hands-on project which uses the life history of a native Scottish species, the brown trout, to promote awareness of river ecology among young people across the River Clyde catchment.

**Place Credentials:** Community Activation, Climate Action, Education, Delivery



## 7 \Clyde Climate Forest\

The Clyde Climate Forest is a project that aims to plant 18 million trees across Glasgow City Region and has the potential to benefit quality of life, quality of place, and wildlife habitats.

**Place Credentials:** Community Activation, Climate Action, Education, Delivery



## 8 \Glasgow Women's Library\

The Glasgow Women's Library is a leading charity and social enterprise that supports thousands of women across Scotland every year by coordinating and hosting a range of public events, services, cultural programmes, and learning opportunities.

**Place Credentials:** Community Empowerment, Public Support, Explicit Values, Inspirational Intent, Education

# The PLACES of Glasgow



## 9 |Monteth Row|

Monteth Row is a housing project in the inner east of Glasgow that has restored a neglected city block and revitalised the listed Monteth Hotel.

Place Credentials: Excellent Design, Public Enterprise, Climate Action, Procurement



## 10 |New Gorbals|

New Gorbals is regarded as an exemplar of masterplan-led area regeneration. New Gorbals Housing Association, established by residents in 1989, has played a pivotal role in the transformative change.

Place Credentials: Community Empowerment, Community Activation, Governance, Partnership, Procurement, Longevity



## 11 |On the Edge|

On the Edge is a visual arts project by Bash Khan that raises awareness of the people and places in Glasgow left on the edge by the political, planning and development process. It asks 'how can communities reclaim and give themselves 'permission' to use their public spaces?'

Place Credentials: Community Empowerment, Community Activation, Inspirational Intent



## 12 |Refuweegeel|

Refuweegeel is a community-led charity which helps to ensure that forcibly displaced people arriving in Glasgow are greeted by kindness and generosity.

Place Credentials: Community Empowerment, Community Activation, Inspirational Intent, Values



## 13 |Scottish Canals|

Scottish Canals is a public body that has proactively improved the environmental and socio-economic conditions on and around the banks of the Forth & Clyde Canal by combining functional requirement with quality of place.

Place Credentials: Community Activation, Excellent Design, Public Enterprise, Climate Action, Partnership, Procurement, Delivery



## 14 |Scotstoun Community Garden|

Scotstoun Community Garden is a community-driven project that has seen a former industrial site be transformed into a tranquil and beautiful green space by volunteers who sourced their own funds, tools, and materials.

Place Credentials: Community Activation, Excellent Design, Climate Action



## 15 |South Seeds|

South Seeds is a community-led organisation based in Govanhill with the mission to enable Southsiders to lead more sustainable lives.

Place Credentials: Community Empowerment, Community Activation, Social Enterprise, Climate Action, Values, Education



## 16 |Woodside Towers|

The regeneration of the Woodside Multi-Storey Flats in North Glasgow is an exemplar for retrofitting high-rise housing and has helped to reduce energy demand and tackle fuel poverty for residents.

Place Credentials: Excellent Design, Climate Action, Community Engagement, Procurement



## The Places of Glasgow\ place synergies\



### 5 \Clyde Gateway\

Clyde Gateway is an urban regeneration Company established to deliver significant social, economic, and physical change across East Glasgow and South Lanarkshire.

**Place Credentials:** Community Engagement, Excellent Design, Public Enterprise, Governance, Partnership, Procurement, Delivery, Longevity



### 10 \New Gorbals\

New Gorbals is regarded as an exemplar of masterplan-led area regeneration. New Gorbals Housing Association, established by residents in 1989, has played a pivotal role in the transformative change.

**Place Credentials:** Community Empowerment, Community Activation, Governance, Partnership, Procurement, Longevity

## The Places of Glasgow\ place synergies\



### 14 \Scotstoun Community Garden\

Scotstoun Community Garden is a community-driven project that has seen a former industrial site be transformed into a tranquil and beautiful green space by volunteers who sourced their own funds, tools, and materials.

**Place Credentials:** Community Activation, Excellent Design, Climate Action



### 15 \South Seeds\

South Seeds is a community-led organisation based in Govanhill with the mission to enable Southsiders to lead more sustainable lives.

**Place Credentials:** Community Empowerment, Community Activation, Social Enterprise, Climate Action, Values, Education

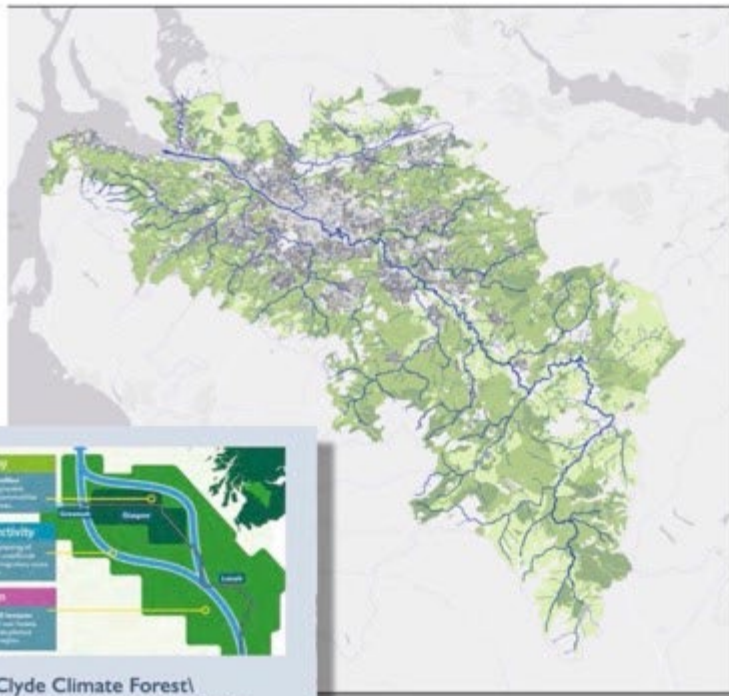
# The Places of Glasgow\ place synergies\



## 4 \Clyde in the Classroom\

Clyde in the Classroom is a hands-on project which uses the life history of a native Scottish species, the brown trout, to promote awareness of river ecology among young people across the River Clyde catchment.

Place Credentials: Community Activation, Climate Action, Education, Delivery



## 7 \Clyde Climate Forest\

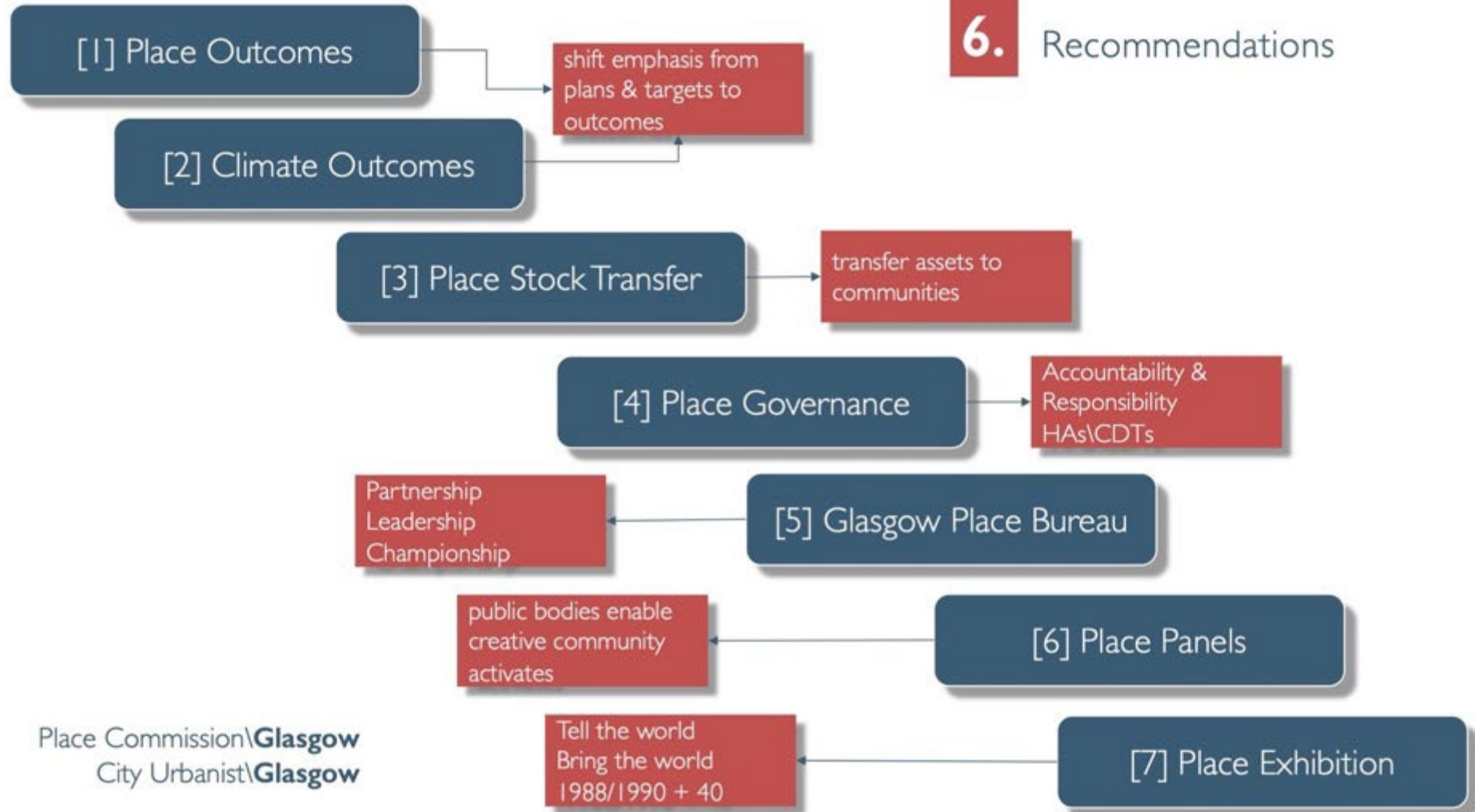
The Clyde Climate Forest is a project that aims to plant 18 million trees across Glasgow City Region and has the potential to benefit quality of life, quality of place, and wildlife habitats.

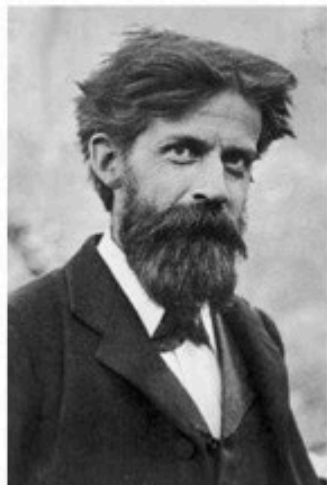
Place Credentials: Community Activation, Climate Action, Education, Delivery

## 6. Findings

- What we mean by place
- Glasgow's Journey
- Engagement & Engagement Outcomes
- The cities of Glasgow\ international, metropolitan, everyday
- The places of Glasgow\ of people, by people, for people
- Challenges remain
- Learning from Glasgow Applying the learning
- Capacity building\ a place system

# 6. Recommendations

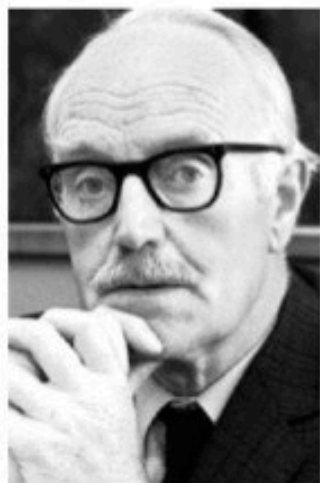




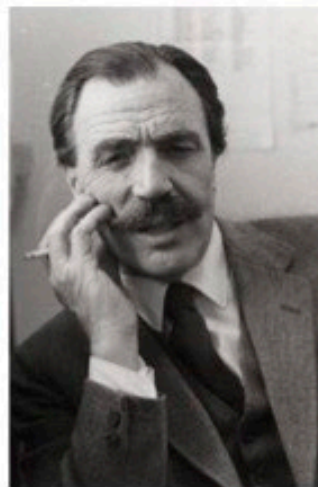
Patrick Geddes



John Muir,



Robert Grieve



Ian McHarg



Robert Steedman



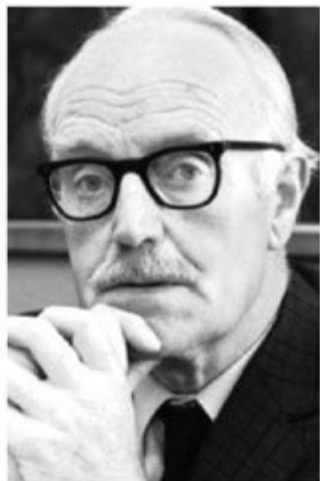
Mark Turnbull



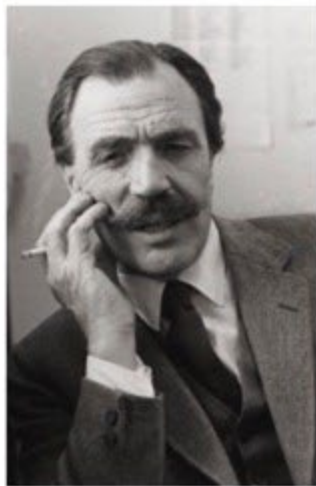
Patrick Geddes



John Muir,



Robert Grieve



Ian McHarg



Robert Steedman



Mark Turnbull



Cathy Johnston



Sue Evans



Rachel Tennant

**THE LAND**

**THE PEOPLE**

**THE CITY**



# Agenda 2030 : Transforming our World – the Sustainable Development Goals



**Article 2:** comprehensive, far-reaching and **people-centred** universal and transformative goals and targets

**Article 5:** **integrated and indivisible** to balance the three dimensions of sustainable development – economic, social and environmental



Source:  
Outcomes-focused  
Policy Making in Scotland  
[www.nationalperformance.gov.scot](http://www.nationalperformance.gov.scot)



Source:  
Glasgow's Climate Plan  
Response to the climate & ecological emergency  
[www.glasgow.gov.uk](http://www.glasgow.gov.uk)



Place Commission\Glasgow  
City Urbanist\Glasgow

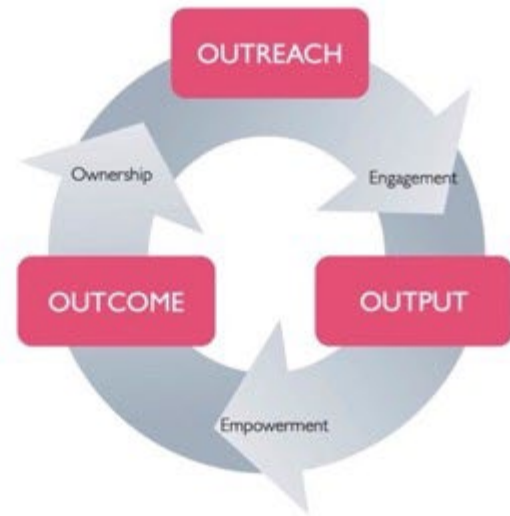
The SDGs enable **vertical** and **horizontal** integration



The Creative Design Cycle



The Pedagogic Cycle



The Empowerment Cycle

Research | Education | Policy | Engagement | Practice | Design | Communication | Maintain

## Scotland's National Performance Framework

Our Purpose, Values and National Outcomes



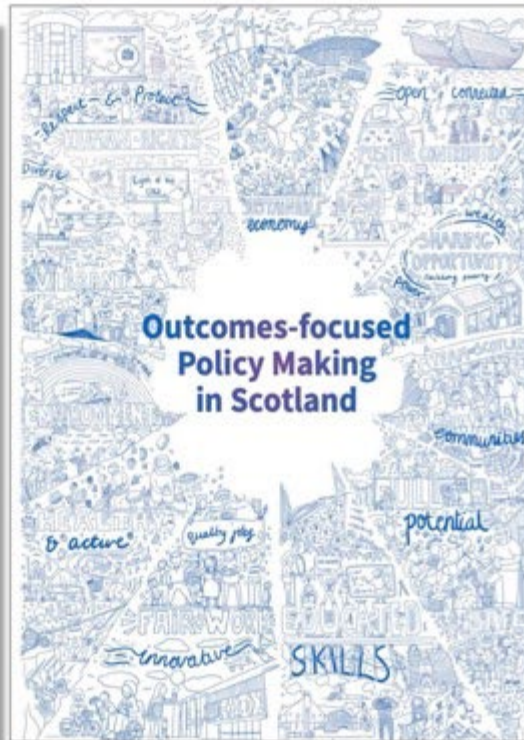
[nationalperformance.gov.scot](http://nationalperformance.gov.scot)

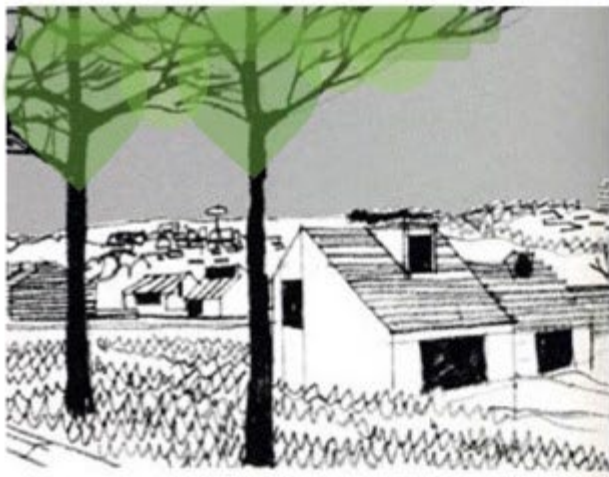


## National Planning Framework 4



Scottish Government  
Riaghaidh na h-Alba





Unforested Plateau



Forested Plateau

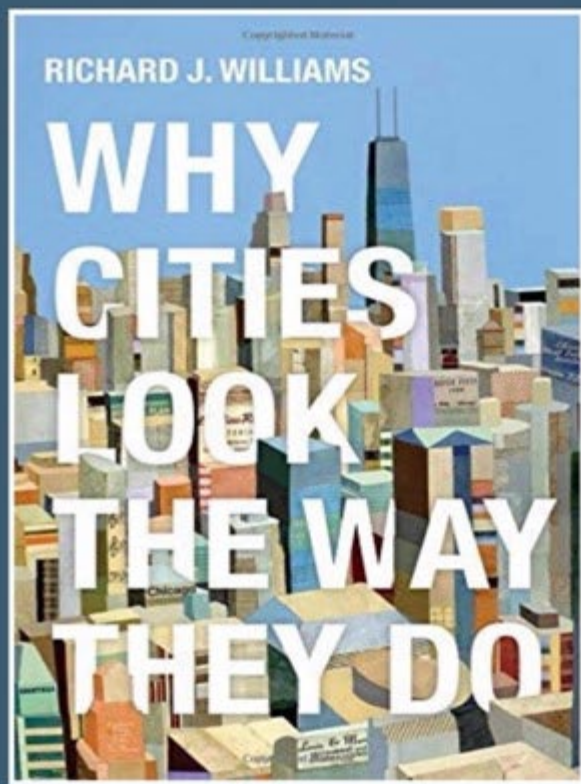


Forested Valley Wall



CLYDE CLIMATE FOREST  
A Temperate Rain Forest  
Every tree planted contributes to the canopy

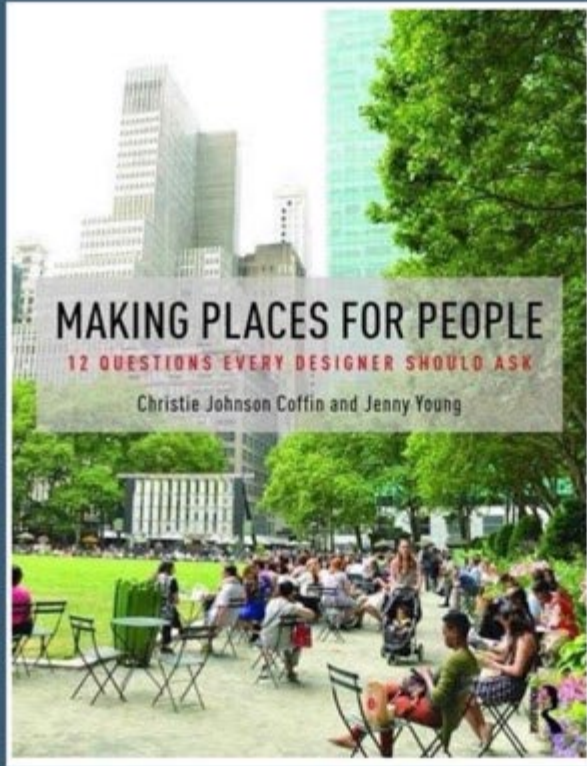




Why Cities look the way they do  
*Richard J Williams*

## *All about* PROCESS

- Money
- Power
- Sex
- Work
- War
- Culture



**Making Places for People**  
*Christie Coffin & Jenny Young*

- What is the 'story' of this place?
- **Whose place is it?**
- Where is it?
- **How big is the place?**
- What 'logic' supports it?
- **Does it balance community, privacy and economy?**
- What makes it useful?
- **Does it support health?**
- What makes it sustainable?
- **Who does (and will) like it?**
- What is the evidence that it will work?
- **Does it support social equity?**



Per Møllerup



# Godt nok er ikke nok

Betragtninger om offentlig design

# Good Enough is not Enough

Observations on public design

Dansk Design Center  
Danish Design Centre



“

Cities have the capability of providing something for everybody, only because, and only when, they are created by everybody.”

Jane Jacobs

“

You won't often find us talking about climate change ...

... we think the best way to tackle climate change is by cutting energy use, reducing waste and using local spaces to grow food – bringing practical benefits to local people.

So, we talk about these things most of the time.”

Lucy Gillie, South Seeds